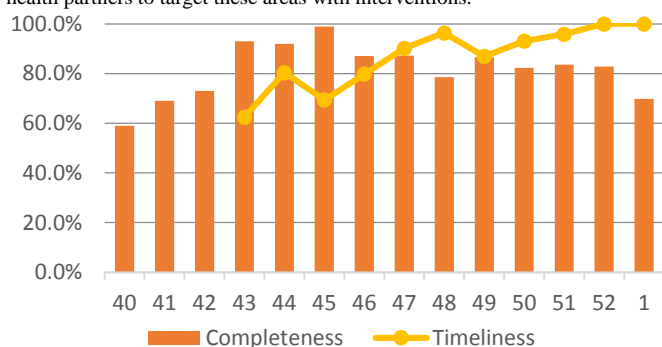


Epidemiological Weekly Bulletin Syria EWARN

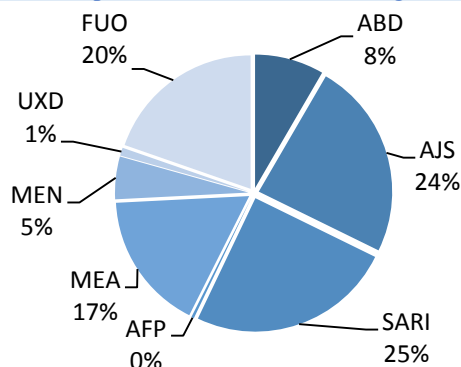
Highlights

- During Epi-week no 1, 2014; 69.9% (102/146) of the health facilities across 7 Governorates provided surveillance data; all the reporting sites submitted the weekly reports on time.
- The total number of consultations reported during the reporting week was 38125 (including 46% children under the age of five) compared to 43248 consultations during week 52. The leading cause of morbidity was FUI (Fever of Unknown Origin), with over 296 cases (0.77%).
- 62 alerts were reported during the reporting week no 1, 2014; including 36 alerts for suspected measles, 7 for FUI, 6 for AJS, 9 for SARI, 1 for AFP and 1 for suspected meningitis.
- In week 01, measles outbreak has been confirmed in Tilaada village (Dana sub district, Idlib) by measles specific IgM in 5 cases. Line list will distributed.
- As of week 01, the total number of WPV* cases reported by EWARN is 17 (type 1) and 1 VDPV (Sabine type 3). Three new AFP* cases have been reported in week 1 from Kafr Nobol (Idlib), Madiq Castle (Hama) and Aleppo city (Jazmate), Which are being further investigated; stools samples were collected from 2 cases and results are pending.
- It is apparent that the major causes of morbidity in Syria are the Water and Hygiene related diseases and vaccine preventable diseases, hence we urge our health partners to target these areas with interventions.



*Timeliness was reported starting epi week 43.

Proportion of morbidities among <5Y

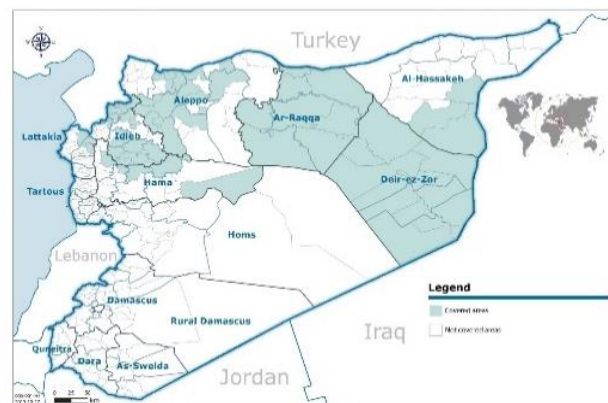


Proportional Morbidity for Leading Priority Diseases – Epi week 1, 2014

Leading Diseases	Epi week 52		Epi week 1	
	Cases	%	Cases	%
FUI	414	0.96%	296	0.78%
AJS	227	0.52%	182	0.48%
SARI	133	0.31%	142	0.37%
Sus. Measles	85	0.20%	84	0.22%
Others	42389	98.01%	37421	98.2%
Total	43248	100%	38125	100%

EWARN Coverage

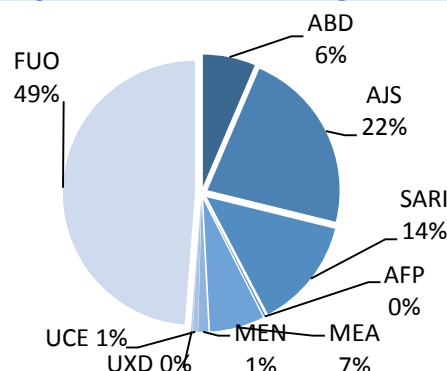
ACU EWARN covers 71/150 Sub-Districts in 7 Governorates. The total population currently under surveillance is about 7.189.528



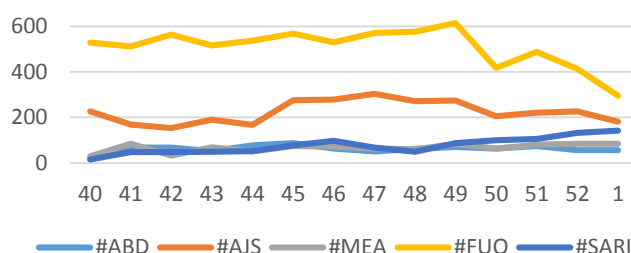
Number of Sentinel Sites and Total Number of Consultations per Governorate:

Governorate	No of Sentinels	Reporting Sentinels	No. of Consultations
Aleppo	37	18 (48.6%)	6080
Al-Hassakeh	5	4 (80.0%)	667
Ar-Raqqa	22	16 (72.7%)	6100
Deir-uz-Zor	37	34 (91.9%)	12217
Hama	7	2 (28.6%)	164
Idlib	36	28 (77.8%)	12897
Grand Total	146	102 (69.9%)	38125

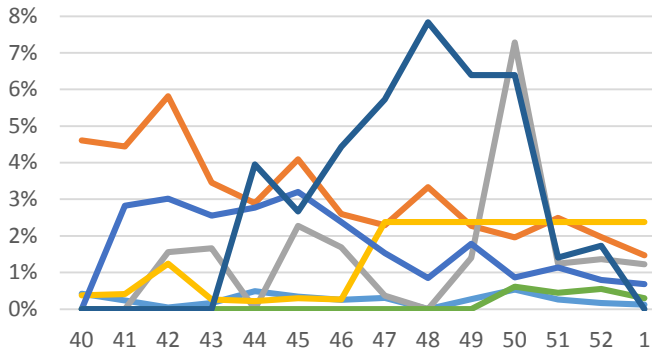
Proportion of morbidities among ≥5Y



Trends for Leading Priority Diseases in 7 Governorates – Epi week 40, 2013 to Epi week 1, 2014:

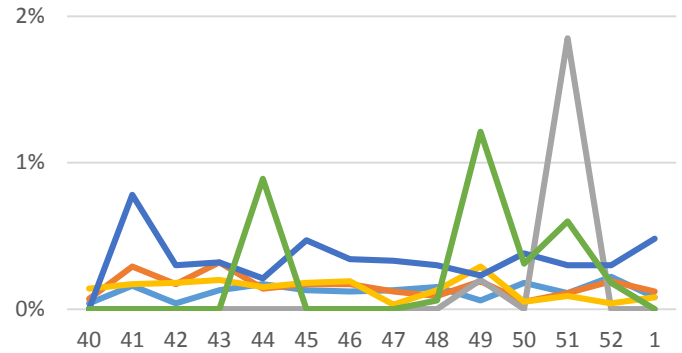


Proportional Morbidity of Fever of Unknown Origin by Governorate, Epi Week 01:



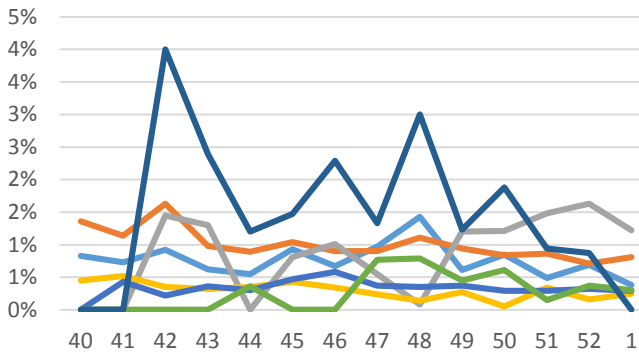
Fever of unknown origin (FUO) is a very non-specific syndrome. Majority of FUO cases are suspected to be typhoid fever.

Proportional Morbidity of suspected Measles by Governorate, Epi Week 01:



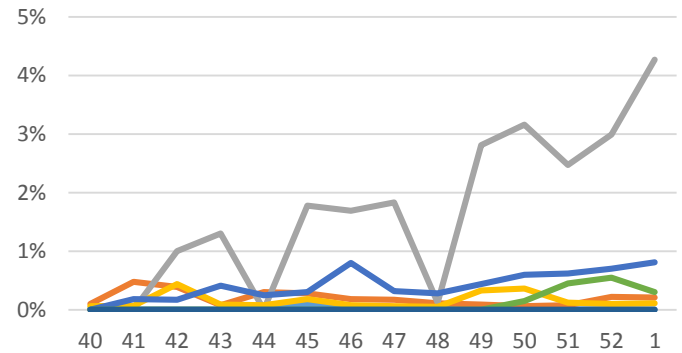
Suspected measles proportional morbidity appears to be stable and decreasing in all governorates. Lattakia had no cases of suspected measles in the last weeks.

Proportional Morbidity of Acute Jaundice Syndrome by Governorate, Epi Week 01:



Acute jaundice syndrome proportional morbidity is stable in all governorates.

Proportional Morbidity of Severe Acute Respiratory Illness (SARI) by Governorate, Epi Week 01:



Legend: Aleppo, Idleb, Hama, Ar-Raqqa, Deir-ez-Zor, Al-Hassakeh, Lattakia.

Number of Reported Cases for EWARN Priority Syndrome¹ under Surveillance by Age Group and Governorate, Epi Week 01:

	Idleb	Ar-Raqqa	Deir-ez-Zor	Aleppo	Al-Hassakeh	Hama	Grand Total
ABD<5	4	4	12	0	6	0	26
ABD≥5	3	8	11	1	5	3	31
AWD<5	0	0	0	0	0	0	0
AWD≥5	0	0	0	0	0	0	0
AJS<5	48	4	13	7	1	1	74
AJS≥5	56	11	22	16	2	1	108
SARI<5	17	1	55	0	0	4	77
SARI≥5	10	6	44	0	2	3	65
AFP<5	0	0	0	1	0	0	1
AFP≥5	0	0	0	0	1	0	1
MEA<5	11	4	36	1	0	0	52
MEA≥5	4	1	23	4	0	0	32
MEN<5	2	0	13	1	0	0	16
MEN≥5	3	2	0	1	0	0	6
UCE<5	0	0	0	0	0	0	0
UCE≥5	0	0	0	3	0	0	3
UXD<5	0	0	3	0	0	0	3
UXD≥5	0	0	1	0	0	0	1
FUO<5	48	0	13	0	0	0	61
FUO≥5	141	13	70	7	2	2	235
OTHERS<5	6056	2206	6177	2480	263	75	17257
OTHERS≥5	6494	3840	5724	3558	385	75	20076
Total<5	6186	2219	6322	2490	270	80	17567
Total≥5	6711	3881	5895	3590	397	84	20558

Number of alerts of Priority Syndrome received and verified, Epi Week 01:

Disease	# of alerts	True alerts	Prop of True Alerts
FUO	7	7	100
MEA	36	36	100
UCE	2	2	100
AJS	6	6	100
AFP	1	1	100
SARI	9	9	100
MEN	1	1	100
ABD	0	0	100
Total	62	62	100

¹ ABD=Acute Bloody Diarrhea; AWD=Acute Watery Diarrhea; AJS=Acute Jaundice Syndrome; SARI= Severe Acute Respiratory Illness; AFP=Acute Flaccid Paralysis; MEA=suspected Measles; MEN= suspected Meningitis; UCE=Unexplained Cluster Of Health Events; UXD=Unexplained Death; FUO=Fever Of Unknown Origin