

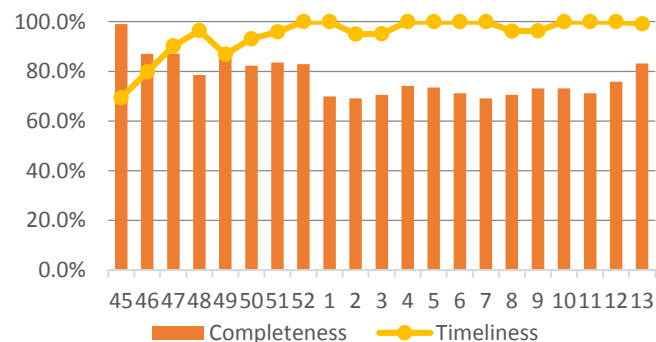
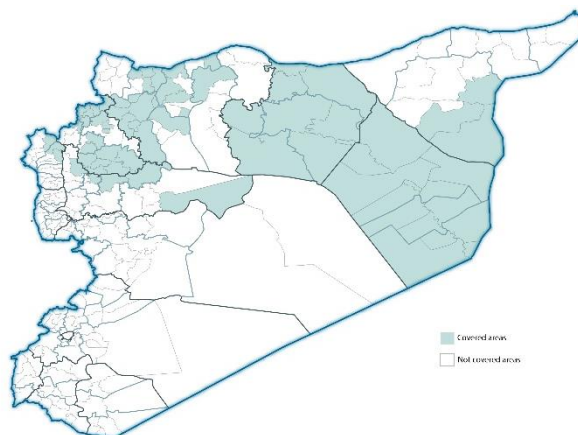
## Epidemiological Weekly Bulletin Syria EWARN

### Highlights

- During Epi-week no 13, 2014; 83.2% (124/149) of the health facilities across 7 Governorates provided surveillance data; 100% of reporting sites submitted the weekly reports on time.
- The total number of consultations reported during the reporting week was **42005** (including 42.8% children under the age of five) compared to **39845** consultations during week 12. The leading cause of morbidity was FUIO (Fever of Unknown Origin), with over 294 cases (0.69%).
- 95 alerts reported during the reporting week 13, 2014; including 53 alerts for suspected measles (189 cases), 14 for FUIO, 3 for AJS, 13 for SARI, 8 for UCE, 2 for AFP from Aleppo.
- One measles case was laboratory confirmed by one INGO in Al Raqqa (Tall Abyad). We continue collecting data about measles cases by line list.
- Data about new cases of Cutaneous leishmaniasis collected under other diseases; 100 new cases documented the most of them from Aleppo, Idleb & Ar-Raqqa.
- As of week 13, the total number of WPV cases reported by EWARN is 13 (type I) and 1 Sabine type 3. 2AFP (Acute Flaccid Paralysis) case reported this week.
- Common disease reported under others were URTI (upper respiratory tract infection), acute diarrhea and others.

### EWARN Coverage

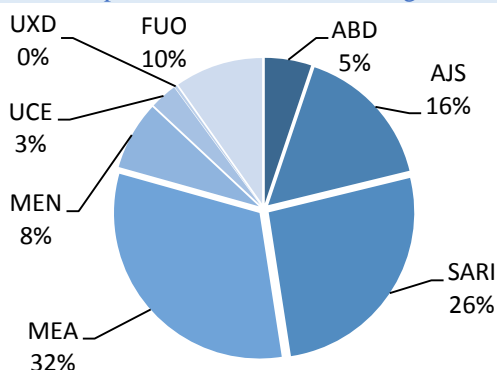
ACU EWARN covers 71/150 Sub-Districts in 7 Governorates. The total population currently under surveillance is about 7.189.528



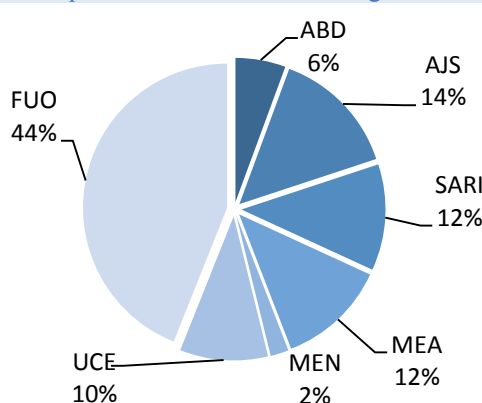
### Number of Sentinel Sites and Total Number of Consultations per Governorate:

Governorate	No of Sentinels	Reporting Sentinels	No. of Consultations
Aleppo	37	27	73.0%
Al-Hassakeh	5	3	60.0%
Ar-Raqqa	22	28	127.3%
Deir-uz-Zor	37	34	91.9%
Hama	7	6	85.7%
Idleb	38	25	65.8%
Lattakia	3	1	33.3%
<b>Grand Total</b>	<b>149</b>	<b>124</b>	<b>83.2%</b>

### Proportion of morbidities among <5Y



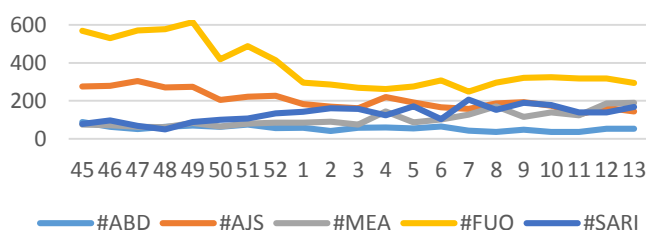
### Proportion of morbidities among ≥5Y



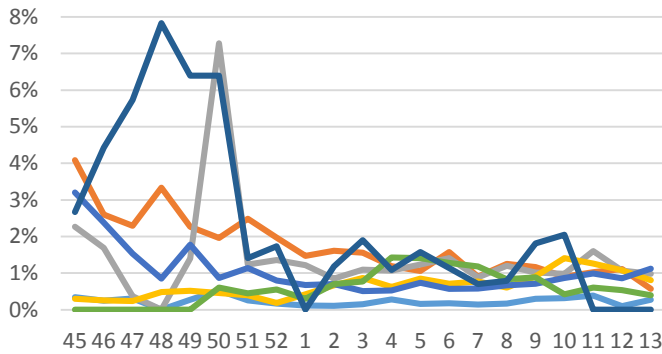
### Proportional Morbidity for Leading Priority Diseases – Epi week 13, 2014

Leading Diseases	Epi week 12		Epi week 13	
	Cases	%	Cases	%
FUIO	318	0.79	294	0.69
AJS	163	0.26	144	0.34
SARI	139	0.34	139	0.32
Sus. Measles	184	0.46	189	0.44
Others	38413	96.4	41049	97.7
<b>Total</b>	<b>39845</b>	<b>100%</b>	<b>42005</b>	<b>100%</b>

### Trends for Leading Priority Diseases in 7 Governorates – Epi week 45, 2013 to Epi week 13, 2014:

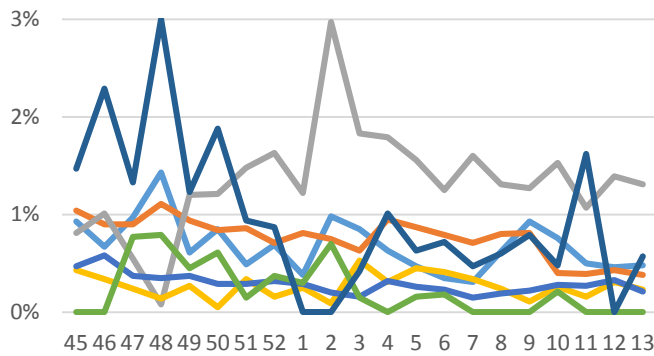


Proportional Morbidity of Fever of Unknown Origin by Governorate, Epi Week 13:



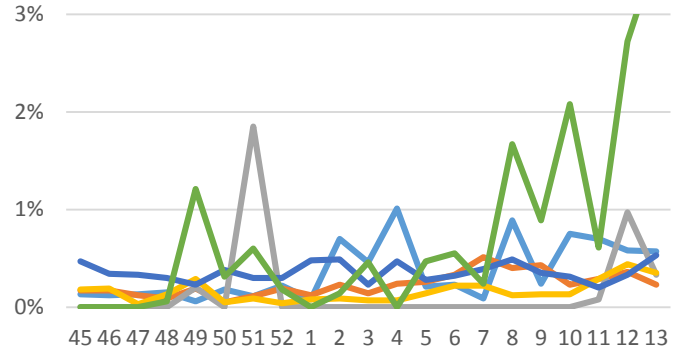
Fever of unknown origin (FUO) is a very non-specific syndrome. Majority of FUO cases are suspected to be typhoid fever.

Proportional Morbidity of Acute Jaundice Syndrome by Governorate, Epi Week 13:



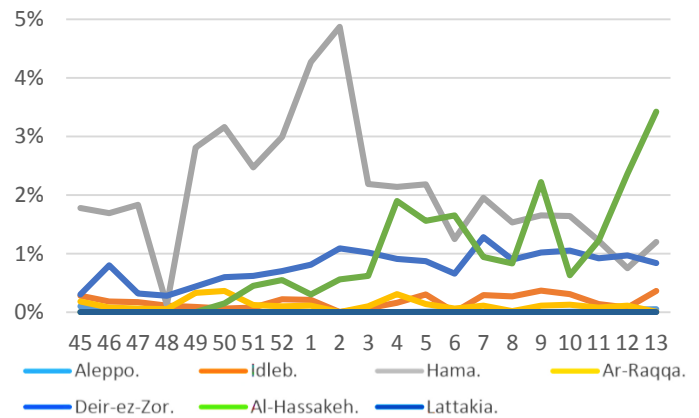
Acute jaundice syndrome proportional morbidity is stable in all governorates.

Proportional Morbidity of suspected Measles by Governorate, Epi Week 13:



Suspected measles proportional morbidity appears to be increasing in some governorates. Lattakia had no cases of suspected measles in the last weeks.

Proportional Morbidity of Severe Acute Respiratory Illness (SARI) by Governorate, Epi Week 13:



Number of Reported Cases for EWARN Priority Syndrome<sup>1</sup> under Surveillance by Age Group and Governorate, Epi Week 13:

	Idleb	Ar-Raqqa	Deir-ez-Zor	Aleppo	Al-Hassakeh	Hama	Lattakia	Grand Total
ABD<5	3	6	4	0	0	6	0	19
ABD≥5	0	8	15	2	3	5	0	33
AWD<5	0	0	0	0	0	0	0	0
AWD≥5	0	0	0	0	0	0	0	0
AJS<5	19	7	13	13	0	7	0	59
AJS≥5	24	13	10	32	0	5	1	85
SARI<5	11	1	64	3	11	7	0	97
SARI≥5	30	0	28	2	6	4	0	70
AFP<5	0	0	0	0	0	0	0	0
AFP≥5	0	0	0	0	0	0	0	1
MEA<5	21	10	46	21	16	3	0	117
MEA≥5	5	20	12	33	2	0	0	72
MEN<5	2	14	11	1	0	0	0	28
MEN≥5	7	3	2	0	0	0	0	12
UCE<5	0	2	8	1	0	0	0	11
UCE≥5	0	41	15	2	0	0	0	58
UXD<5	0	0	1	0	0	0	0	1
UXD≥5	0	0	0	0	0	0	0	0
FUO<5	7	0	23	3	0	3	0	36
FUO≥5	58	70	99	23	2	6	0	258
OTHERS<5	4608	3323	5097	3841	225	436	81	17611
OTHERS≥5	6642	5079	5468	5489	232	435	93	23438
Total<5	4675	3406	5267	3883	252	462	81	17979
Total≥5	6773	5235	5649	5583	245	455	94	24026

Epidemiological situation updates by governorate (week 13, 2014)

**Aleppo:**

In week 13, 22 alerts reported, including 15 for suspected measles (54 cases), 4 for UCE and 2 for AJS.1 for FUO.2 for AFP.

**Idleb:**

In week 13, 10 alerts were reported, 6 for measles (26cases), 2 for FUO, 2 for SARI.

**Ar-Raqqa;**

In week 13, 19 alerts reported, 12 for suspected measles (30 cases) and 6 for FUO, 1 for MEN.

**Deir-ez-Zor:**

In week 13, 35 alerts reported, 15 for MEA (23 cases), 5 for FUO, 8 for SARI, 2 ABD and, 4 for UCE.

**Hama:**

In week 13, 4 alerts reported.2 for suspected measles and 1 for AJS, 1 for SARI.

**Al Hasaka:**

In week 13, 5 alerts, 3 reported for suspected measles (15 cases) 2 for SARI.

**Latakia:**

In week 13.no alerts.

<sup>1</sup> ABD=Acute Bloody Diarrhea; AWD=Acute Watery Diarrhea; AJS=Acute Jaundice Syndrome; SARI= Severe Acute Respiratory Illness; AFP=Acute Flaccid Paralysis; MEA=suspected Measles; MEN= suspected Meningitis; UCE=Unexplained Cluster Of Health Events; UXD=Unexplained Death; FUO=Fever Of Unknown Origin