

EPI Week No. 17

Date: 20 – 26 April 2014

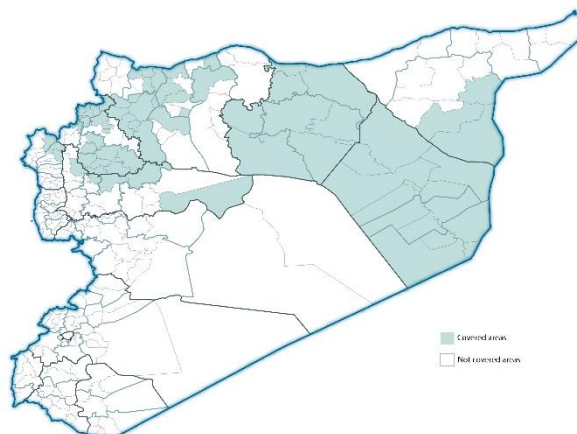
Epidemiological Weekly Bulletin Syria EWARN

Highlights

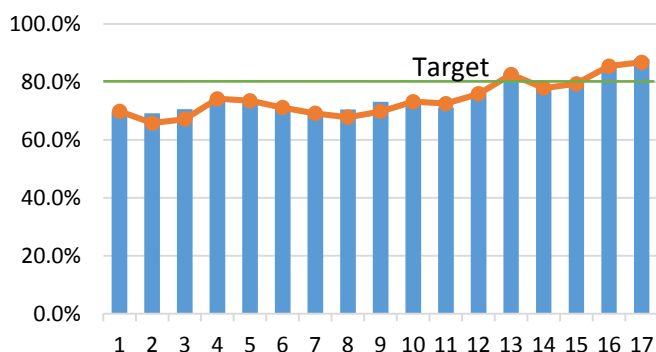
- During Epi-week no 17, 2014; **86.1%** (130/151) of the health facilities across 7 Governorates provided surveillance data **86.1%** of reporting sites submitted the weekly reports on time.
- The total number of consultations reported during the reporting week was **45140** (including 43.5% children under the age of five) compared to **42479** consultations during week 16. The leading cause of morbidity was FOU (Fever of Unknown Origin), with over 416 cases (0.92%).
- Ongoing measles outbreak in all governorate except Latakia (234 cases of suspected measles).
- As of week 17, 4 new AFP (Acute Flaccid Paralysis) cases reported, 16 AFP cases reported in 2014 up to date. See weekly Poliomyelitis outbreak report for more details.
- Common disease reported under others were URTI (upper respiratory tract infection), acute bronchiolitis, whooping cough, acute diarrhea, Brucellosis and Cutaneous leishmaniasis.
- 150 new Cutaneous leishmaniasis documented compared to 236 new cases previous week. one suspected case of visceral leishmaniasis reported from Idleb
- 10 new cases of TB confirmed in Idleb.

EWARN Coverage

ACU EWARN covers 71/150 Sub-Districts in 7 Governorates. The total population currently under surveillance is about 7.189.528



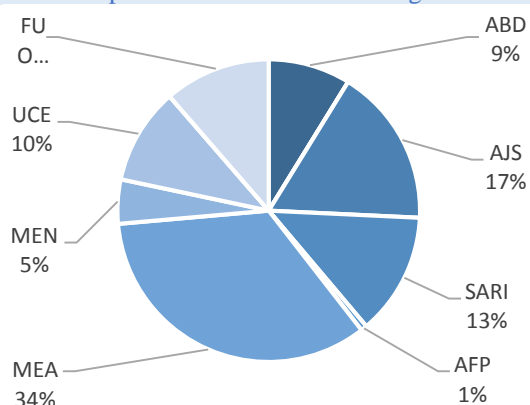
Completeness and timeliness



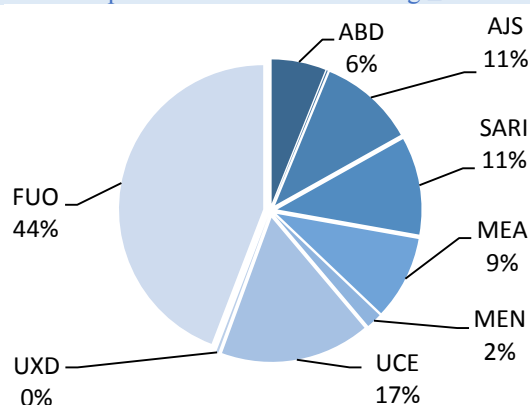
Number of Sentinel Sites and Total Number of Consultations per Governorate:

Governorate	No of Sentinels	Reporting Sentinels	No. of Consultations
Aleppo	37	32	9021
Al-Hassakeh	5	3	598
Ar-Raqqa	24	26	12632
Deir-ez-Zor	37	33	10602
Hama	7	7	1149
Idleb	38	26	10558
Lattakia	3	3	580
Grand Total	151	130	45140

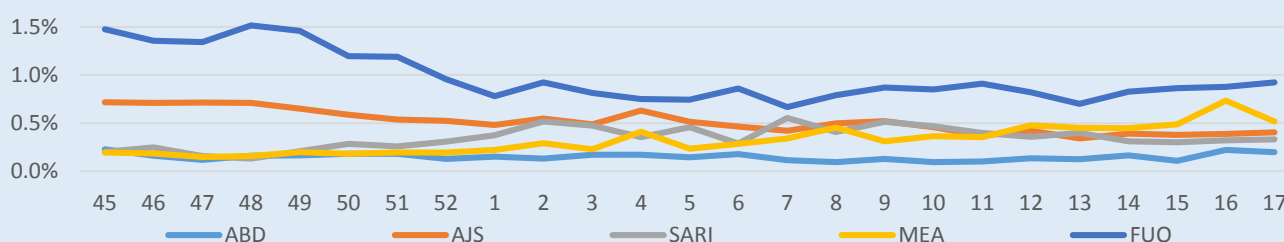
Proportion of morbidities among <5Y



Proportion of morbidities among ≥5Y



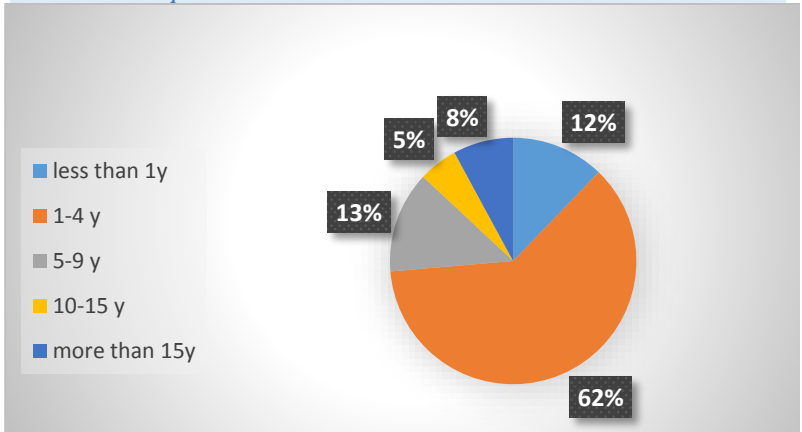
Trends for Leading Priority Diseases in 7 Governorates – Epi week 45, 2013 to Epi week 17, 2014:



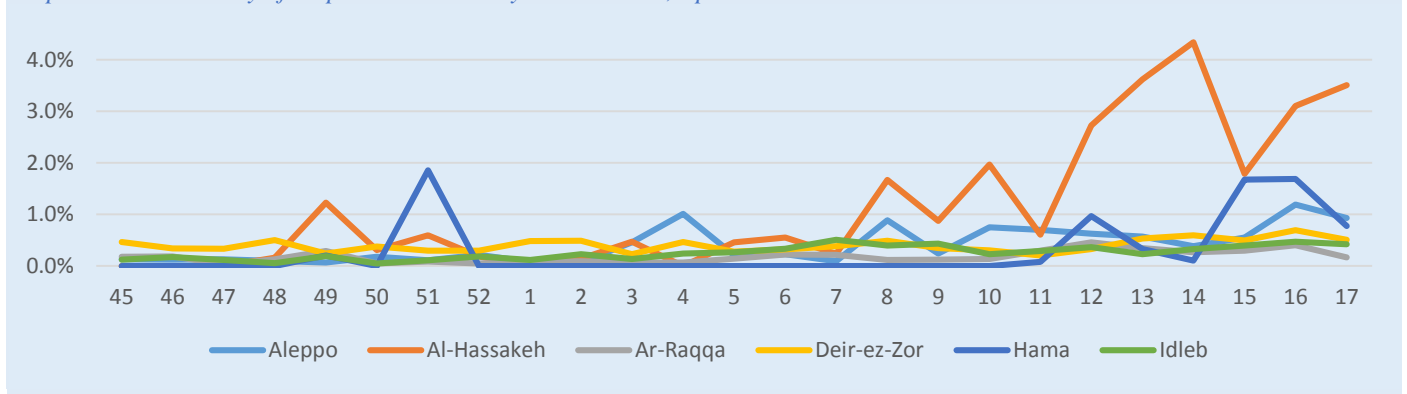
Measles epidemic:

- Sixty-Seven HFJs (42.9% of EWARN sentinel sites) reported suspected measles cases.
- Aleppo and Deir-ez-Zor governorates reported the highest number of measles cases.
- The highest Proportional Morbidity reported from Al-Hassakeh governorate (22 sus. cases).
- We motivate all NGOs to report any measles related deaths to EWARN central level.
- 74% (531) of reported cases in the last 3 months were less than 5 years old.

Age group percentage of suspected measles cases reported from 1 Feb to 26 April:



Proportional Morbidity of suspected Measles by Governorate, Epi Week 17:*



*For governorates with small numbers of reporting sites (Al-Hassakeh, Lattakia, and Hama), small changes in number of priority syndromes can result in large changes in the proportional morbidity

Number of cases (n) and proportional morbidity (%) by Epi week and leading priority Syndrome¹ for all governorates, Epi Week 17:

Governorate		Week 16						Week 17					
		FUO	AJS	ABD	MEA	SARI	Total*	FUO	AJS	ABD	MEA	SARI	Total*
Idleb	#	119	49	7	56	40	11888	149	57	3	44	39	10558
	%	1.00%	0.41%	0.06%	0.47%	0.34%	100.00%	1.41%	0.54%	0.03%	0.42%	0.37%	100.00%
Ar-Raqqa	#	67	9	18	32	3	7999	93	25	29	21	16	12632
	%	0.84%	0.11%	0.23%	0.40%	0.04%	100.00%	0.74%	0.20%	0.23%	0.17%	0.13%	100.00%
Deir-ez-Zor	#	135	33	24	73	63	10558	121	25	31	54	68	10602
	%	1.28%	0.31%	0.23%	0.69%	0.60%	100.00%	1.14%	0.24%	0.29%	0.51%	0.64%	100.00%
Aleppo	#	24	55	28	118	9	9913	40	48	14	84	9	9021
	%	0.24%	0.55%	0.28%	1.19%	0.09%	100.00%	0.44%	0.53%	0.16%	0.93%	0.10%	100.00%
Al-Hassakeh	#	4	2	6	16	9	515	0	0	3	22	8	598
	%	0.78%	0.39%	1.17%	3.11%	1.75%	100.00%	0.00%	0.00%	0.50%	3.68%	1.34%	100.00%
Hama	#	9	12	9	17	12	1006	6	10	10	9	9	1149
	%	0.89%	1.19%	0.89%	1.69%	1.19%	100.00%	0.52%	0.87%	0.87%	0.78%	0.78%	100.00%
Lattakia	#	13	3	0	0	0	400	7	17	0	0	0	580
	%	3.25%	0.75%	0.00%	0.00%	0.00%	100.00%	1.21%	2.93%	0.00%	0.00%	0.00%	100.00%
Total	<5	72	66	37	162	78	18074	55	84	41	159	61	18479
	>5	300	99	57	150	59	24405	361	98	49	75	88	26661
Grand total	#	372	165	94	312	137	42479	416	182	90	234	149	45140
	%	0.88%	0.39%	0.22%	0.73%	0.32%	100.00%	0.92%	0.40%	0.20%	0.52%	0.33%	100.00%

¹ ABD=Acute Bloody Diarrhea; AWD=Acute Watery Diarrhea; AJS=Acute Jaundice Syndrome; SARI= Severe Acute Respiratory Illness; AFP=Acute Flaccid Paralysis; MEA=suspected Measles; MEN= suspected Meningitis; UCE=Unexplained Cluster Of Health Events; UXD=Unexplained Death; FUO=Fever Of Unknown Origin
For any queries: please do not hesitate to contact the EWARN Unit at the ewarn@acu-sy.org
Epidemiological Weekly Bulletin- Syria EWARN- Epi week 17

Alerts/Outbreak Investigated and Response Activity in Epi-week 17, 2014:

Disease	Alert threshold	#HF reach threshold	# Cases	The most affected communities ²	Response Activity / Actions Taken*	comments
AFP	1	4	4	Dz:Al-mayadin Abu Kamal	Our DLOs collected the stool samples despite of the difficulty.	
MEA	1	67	234	Hs: Shadadi Id: Harim DZ: Abu Kamal Al: Dayr Hafir, Hadher AR: Maadan	Line list collected in all HFs to identify the most affected age group.	No Lab confirmation
AJS	5	8	182	Al :Mare'	Line list collected in some HFsIdleb & Deir Ez-Zor. The result will declared soon. Hepatitis A confirmed in some cases.	
FUO (typhoid fever)	5	17	416	Id: Harim, Armanaz DZ: Sbikhan, Sur AR: Maadan		No Lab confirmation
ABD	5	0	0			
SARI	5	5	149	DZ:Abu Kamal		No Lab confirmation
MEN	5	0				
UCE (TB)	1 cluster	-		Id: Harim	▪ Support Lab in Al-Mayadin to confirm new cases and looking to TB medicine source.	
UCE (Whooping cough)	1 cluster		63	DZ: Ashara; Sbikhan	Medicine provided to treat affected children and their contacts.	

*Local & IGOs motivate to report their response activity to EWARN priority disease.

² DZ: Deir-ez-Zor; Al: Aleppo; Id: Idleb; AR: Ar-Raqqa; Hm: Hama; La: Lattakia; Hs: Al-Hassakeh.

For any queries: please do not hesitate to contact the EWARN Unit at the ewarn@acu-sy.org