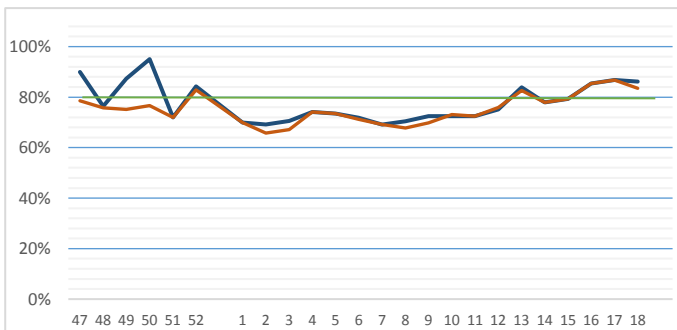


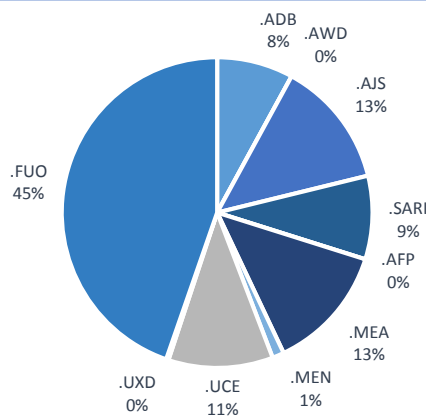
Highlights

- During Epi-week no 18, 2014; 86.1% (130/151) of the health facilities across 7 Governorates provided surveillance data 86.1% of reporting sites submitted the weekly reports on time.
- The total number of consultations reported during the reporting week was 43118 (including 41.3% children under the age of five) compared to 45140 consultations during week 17. The leading cause of morbidity was FUI (Fever of Unknown Origin), with over 455 cases (1.06%).
- Ongoing measles outbreak in all governorate except Latakia (280 cases of suspected measles).
- As of week 18, 3 new AFP (Acute Flaccid Paralysis) cases reported, 19 AFP cases reported in 2014 up to date. See weekly Poliomyelitis outbreak report for more details.
- Common disease reported under others were URTI (upper respiratory tract infection), acute bronchiolitis, whooping cough, acute diarrhea, Brucellosis and Cutaneous leishmaniasis.
- 200 new Cutaneous leishmaniasis documented compared to 150 new cases previous week.

Completeness and timelines

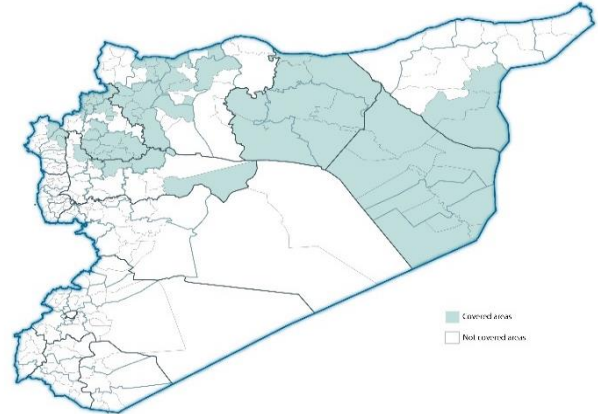


Proportion of morbidities among >5Y



EWARN coverage

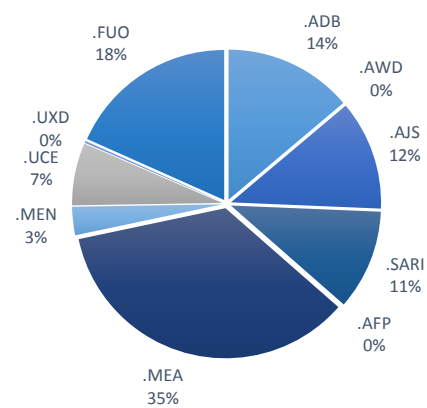
ACU EWARN covers 71/150 sub-District in 7 governorate. The total population currently under surveillance is about 7.189.528



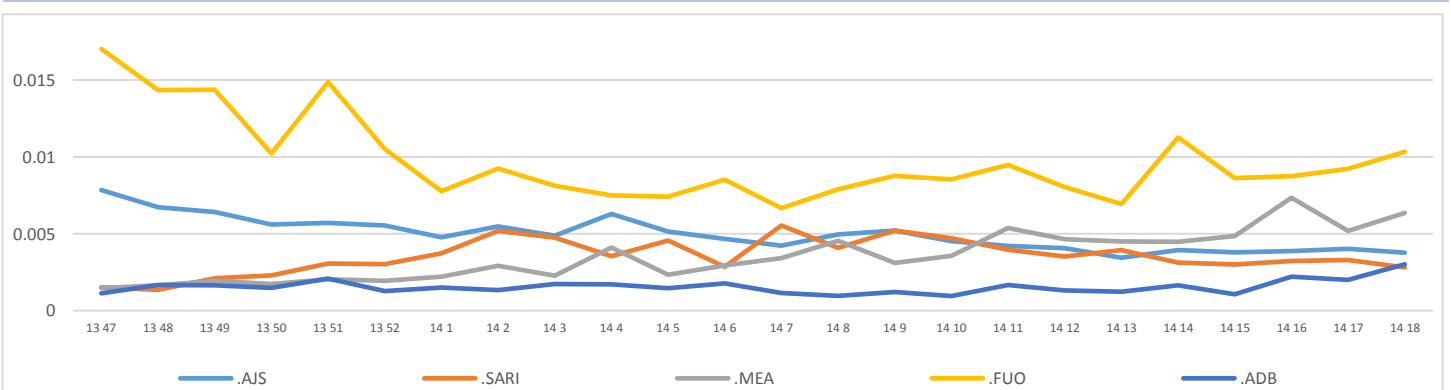
Number of sentinel sites and Total Number of Consultations per Governorate

Governorate	No of sentinel sites	Reporting Sentinel sites	Percentage of Reporting	No of consultations
ALEPPO	37	33	89.2%	8680
AL-HASSAKA	5	3	60.0%	552
AR-RAQQA	26	26	100.0%	9723
DEIR-EZ-ZOR	37	36	97.3%	11137
HAMA	7	7	100.0%	1176
IDLEB	36	23	63.9%	11418
LATTAKIA	3	2	66.7%	432
Grand total	151	130	86.1%	43118

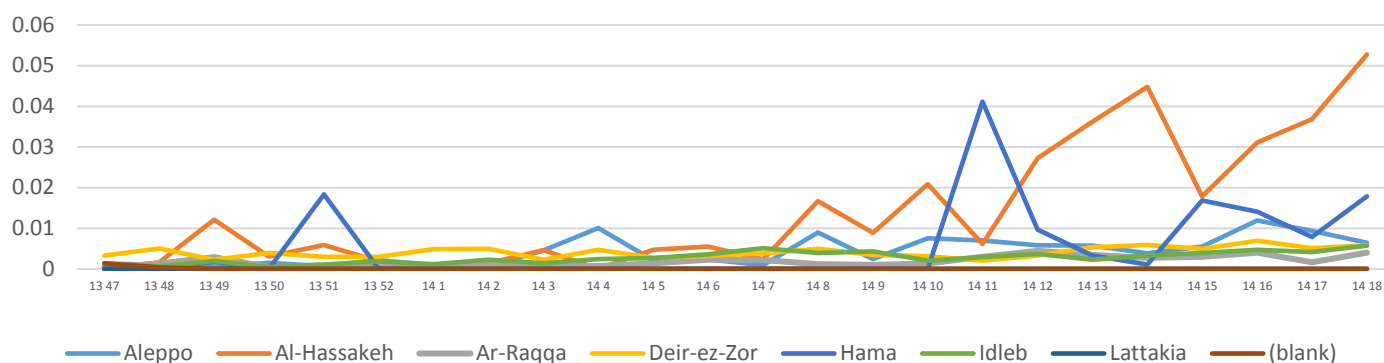
Proportion of morbidities among <5Y



Trends for Leading Priority Diseases in 7 Governorates – Epi week 47, 2013 to Epi week 18 2014



Proportional Morbidity of suspected Measles by Governorate, Epi Week 18



Number of cases (n) and propotional morbidity(%) by Epi week and leading priority Syndrom1 for governorate.Epi week 17 , 18

Governorate		week 17						week 18					
		FUO	AJS	ABD	MEA	SARI	Total*	FUO	AJS	ABD	MEA	SARI	Total*
Aleppo	NO.	40	48	14	84	9	9044	38	47	20	56	8	8680
	%	0.44%	0.53%	0.15%	0.93%	0.10%		0.44%	0.54%	0.23%	0.65%	0.09%	
Al-hassaka	NO.	0	0	3	22	8	627	5	1	7	30	7	552
	%	0.00%	0.00%	0.48%	3.51%	1.28%		0.91%	0.18%	1.27%	5.43%	1.27%	
Ar-rqqa	NO.	93	25	29	21	16	12636	122	35	47	43	11	9723
	%	0.74%	0.20%	0.23%	0.17%	0.13%		1.25%	0.36%	0.48%	0.44%	0.11%	
Deir-ez-zor	NO.	121	25	31	54	68	10626	133	25	40	65	51	11137
	%	1.14%	0.24%	0.29%	0.51%	0.64%		1.19%	0.22%	0.36%	0.58%	0.46%	
Hama	NO.	6	10	10	9	9	1159	7	15	9	21	12	1176
	%	0.52%	0.86%	0.86%	0.78%	0.78%		0.60%	1.28%	0.77%	1.79%	1.02%	
Idleb	NO.	149	57	3	44	39	10465	139	35	10	65	35	11418
	%	1.42%	0.54%	0.03%	0.42%	0.37%		1.22%	0.31%	0.09%	0.57%	0.31%	
Lattakia	NO.	7	17	0	0	0	583	11	8	0	0	0	432
	%	1.20%	2.92%	0.00%	0.00%	0.00%		2.55%	1.85%	0.00%	0.00%	0.00%	
TOTAL	<5	55	84	41	159	61	18479	90	58	68	173	53	17821
	>5	361	98	49	75	88	26661	365	108	65	107	71	26260
Grand total	NO.	416	182	90	234	149	45140	455	166	133	280	124	43118
	%	0.92%	0.40%	0.20%	0.52%	0.33%	1.06%	0.38%	0.31%	0.65%	0.29%		

Alerts/Outbreak Investigated and Response Activity in Epi-week 18 2014

Disease	Alert threshold	#HF reach threshold	# Cases	The most affected communities[1]	Response Activity / Actions Taken*	comments
AFP	1	3	3	Abu Kamal Hajin Susat	Our DLOs collected the stool samples despite of the difficulty.our lab expert distributed special kits to collect stool samples.	
MEA	1	66	280	Hama:latamna Ar-raqqa :Maadan Idleb:Atama Aleppo:Iss	Line list collected in all HF to identify the most affected age group.	
AJS	5	5	166	Aleppo:Iss Lattakea	Line list collected in some HFIdleb & Deir Ez-Zor. The result will declared soon.	
FUO (typhoid fever)	5	21	455	Ar-raqqa :Maadan Deir-ez-zor:Sbeka Lattakia	we coordinate with WASH experts to response	
ABD	5	7	133	Aleppo:Iss		
SARI	5	1	124	Idleb:Darkosh		
MEN						
UCE (Scabies)				in all camps	We distribute the treatment in Hom and Aleppo rural	
UCE (Whooping cough)						

ABD=Acute Bloody Diarrhea AWD=Acute Watery Diarrhea AFP=Acute Flaccid Paralysis AJS=Acute Jaundice Syndrome SARI= Severe Acute Respiratory Illness
UXD=Unexplained Death FUO=Fever Of Unknown Origin MEA=suspected Measles MEN= suspected Meningitis UCE=Unexplained Cluster Of Health Events