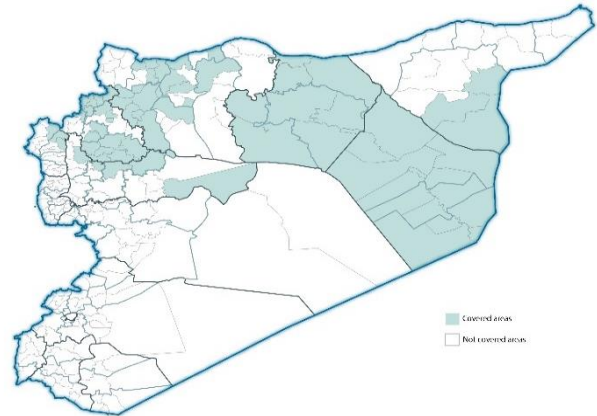


Highlights

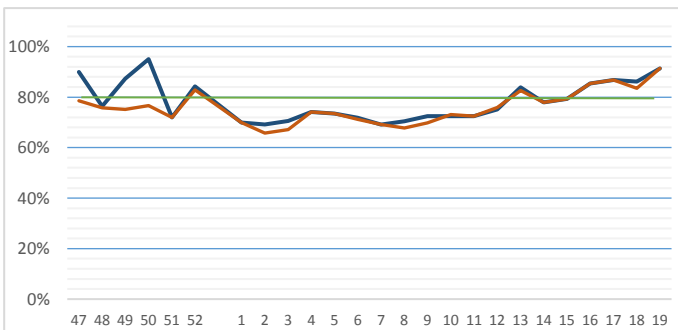
- During Epi-week no 19, 2014; 91.4% (138/151) of the health facilities across 7 Governorates provided surveillance data 91.4% of reporting sites submitted the weekly reports on time.
- The total number of consultations reported during the reporting week was 43118 (including 40.1% children under the age of five) compared to 45821 consultations during week 18. The leading cause of morbidity was FOU (Fever of Unknown Origin), with over 562 cases (1.23%).
- Ongoing measles outbreak in all governorate except Latakia (310 cases of suspected measles).
- As of week 19, 2 new AFP (Acute Flaccid Paralysis) cases reported, 21 AFP cases reported in 2014 up to date. See weekly Poliomyelitis outbreak report for more details.
- Common disease reported under others were URTI (upper respiratory tract infection), acute bronchiolitis, whooping cough, acute diarrhea, Brucellosis and Cutaneous leishmaniasis.

EWARN coverage

ACU EWARN covers 71/150 sub-District in 7 governorate. The total population currently under surveillance is about 7.189.528



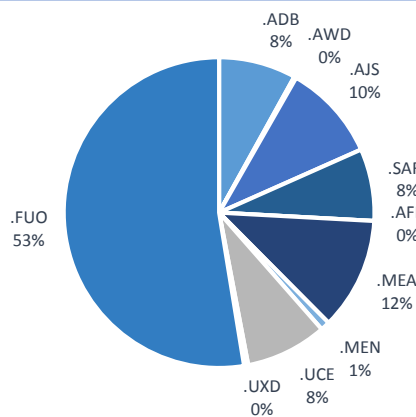
Completeness and timelines



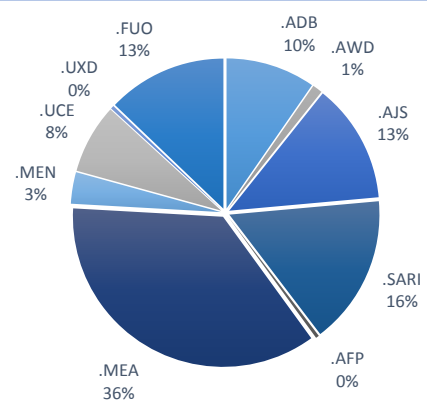
Number of sentinel sites and Total Number of Consultations per Governorate

Governorate	No of sentinels	Reporting Sentinels	No of consultations
ALEPPO	37	33	89.2%
AL-HASSAKA	5	3	60.0%
AR-RAQQA	26	30	115.4%
DEIR-EZ-ZOR	37	34	91.9%
HAMA	7	7	100.0%
IDLEB	36	29	80.6%
LATTAKIA	3	2	66.7%
Grand total	151	138	91.4%

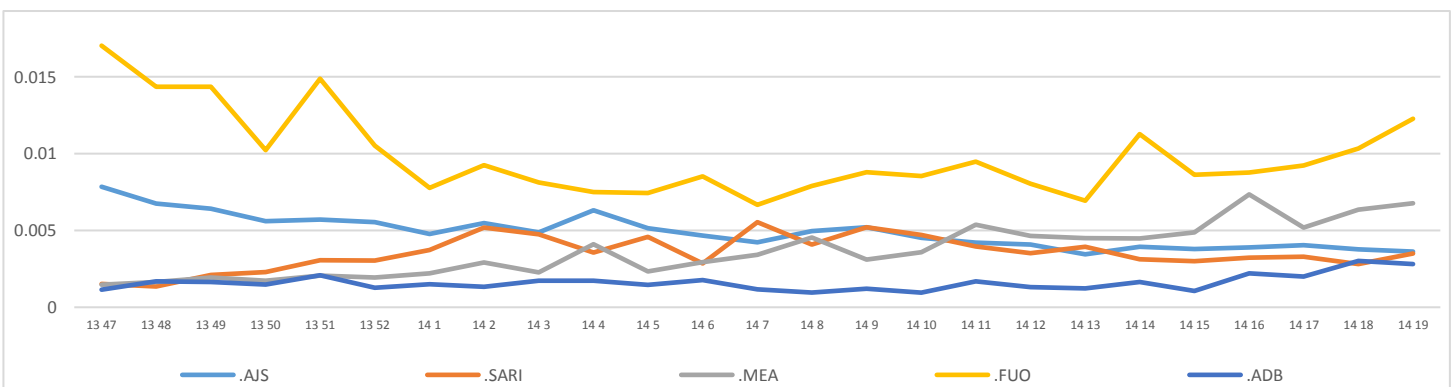
Proportion of morbidities among >5Y



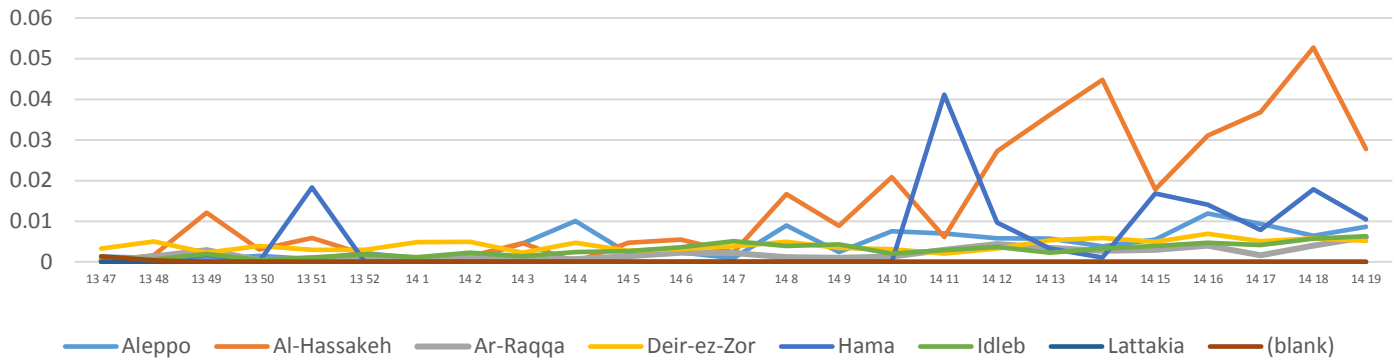
Proportion of morbidities among <5Y



Trends for Leading Priority Diseases in 7 Governorates – Epi week 47, 2013 to Epi week 19 2014



Proportional Morbidity of suspected Measles by Governorate, Epi Week 19 2014



Number of cases (n) and propotional morbidity(%) by Epi week and leading priority Syndrom1 for governorate.Epi week 18 , 19

Governorate		week 18						week 19					
		FUO	AJS	ABD	MEA	SARI	Total*	FUO	AJS	ABD	MEA	SARI	Total*
Aleppo	NO.	38	47	20	56	8	8680	51	63	32	74	15	8771
	%	0.44%	0.54%	0.23%	0.65%	0.09%		0.58%	0.72%	0.36%	0.84%	0.17%	
Al-hassaka	NO.	5	1	7	30	7	552	5	0	6	16	4	566
	%	0.91%	0.18%	1.27%	5.43%	1.27%		0.88%	0.00%	1.06%	2.83%	0.71%	
Ar-rqqa	NO.	122	35	47	43	11	9723	136	40	48	73	22	11831
	%	1.25%	0.36%	0.48%	0.44%	0.11%		1.15%	0.34%	0.41%	0.62%	0.19%	
Deir-ez-zor	NO.	133	25	40	65	51	11137	172	21	24	53	56	10272
	%	1.19%	0.22%	0.36%	0.58%	0.46%		1.67%	0.20%	0.23%	0.52%	0.55%	
Hama	NO.	7	15	9	21	12	1176	3	10	12	12	10	1151
	%	0.60%	1.28%	0.77%	1.79%	1.02%		0.26%	0.87%	1.04%	1.04%	0.87%	
Idleb	NO.	139	35	10	65	35	11418	189	32	7	82	53	12955
	%	1.22%	0.31%	0.09%	0.57%	0.31%		1.46%	0.25%	0.05%	0.63%	0.41%	
Lattakia	NO.	11	8	0	0	0	432	6	0	0	0	0	275
	%	2.55%	1.85%	0.00%	0.00%	0.00%		2.18%	0.00%	0.00%	0.00%	0.00%	
TOTAL	<5	90	58	68	173	53	17821	72	72	54	201	90	18708
	>5	365	108	65	107	71	26260	490	94	75	109	70	27113
Grand total	NO.	455	166	133	280	124	43118	562	166	129	310	160	45821
	%	1.06%	0.38%	0.31%	0.65%	0.29%		1.23%	0.36%	0.28%	0.68%	0.35%	

Alerts/Outbreak Investigated and Response Activity in Epi-week 19 2014

Disease	Alert threshold	#HF reach threshold	# Cases	The most affected communities[1]	Response Activity / Actions Taken*	comments
AFP	1	2	2	Zarba jebel Saman	Our DLOs collected the stool samples despite of the difficulty.our lab expert distributed special kits to collect stool samples.	
MEA	1	67	310	Hama:latamna Ar-raqqa :Maadan Idleb:Atama.Darkosh Aleppo:Iss.Davr Hafir	Line list collected in all HF's to identify the most affected age group.	
AJS	5	5	166	Aleppo:Iss Lattakea	Line list collected in some HF's Idleb & Deir Ez-Zor. The result will declared soon.	
FUO (typhoid fever)	5	22	562	Ar-raqqa :Maadan Deir-ez-zor:Sbekan Lattakia	increase number of cases in Idleb and Deir-Ez-Zor,we coordinate with WASH experts to response	
ABD	5	5	129	Aleppo:Iss		
SARI	5	1	160	Idleb:Darkosh		
MEN						
UCE (Scabies)				in all camps	We distribute the treatment in Hom and Aleppo rural	
UCE (Whooping cough)						