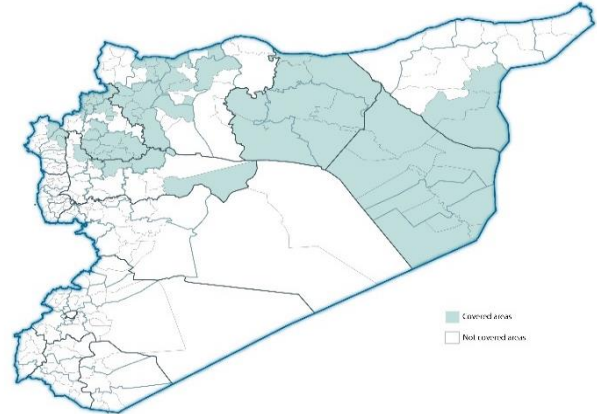


### Highlights

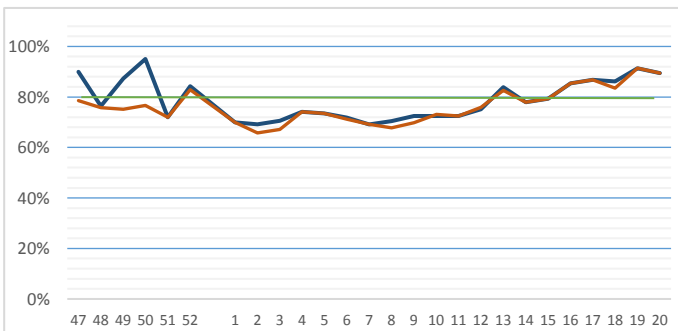
- During Epi-week no 20, 2014; 89.4% (135/151) of the health facilities across 7 Governorates provided surveillance data 89.1% of reporting sites submitted the weekly reports on time.
- The total number of consultations reported during the reporting week was 46517 (including 40.9% children under the age of five) compared to 45821 consultations during week 19. The leading cause of morbidity was FUI (Fever of Unknown Origin), with over 575 cases (1.24%).
- Ongoing measles outbreak in all governorate except Latakia (300 cases of suspected measles).
- As of week 20, 2 new AFP (Acute Flaccid Paralysis) cases reported, 23 AFP cases reported in 2014 up to date. See weekly Poliomyelitis outbreak report for more details.
- Common disease reported under others were URTI (upper respiratory tract infection), acute bronchiolitis, whooping cough, acute diarrhea, Brucellosis and Cutaneous leishmaniasis.

### EWARN coverage

ACU EWARN covers 71/150 sub-District in 7 governorate. The total population currently under surveillance is about 7.189.528



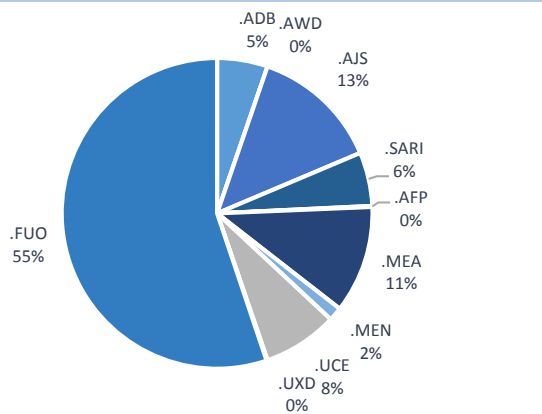
### Completeness and timelines



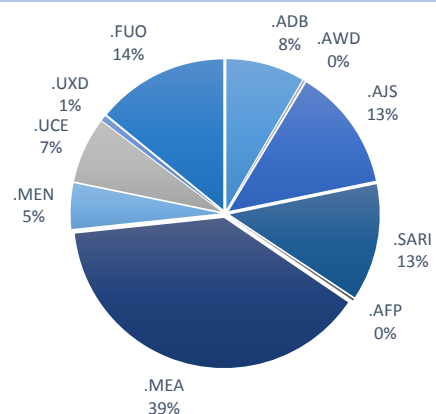
### Number of sentinel sites and Total Number of Consultations per Governorate

Governorate	No of sentinels	Reporting Sentinels	No of consultations
ALEPPO	37	34	10027
AL-HASSAKA	5	3	578
AR-RAQQA	26	29	11127
DEIR-EZ-ZOR	37	35	11185
HAMA	7	7	1200
IDLEB	36	24	11483
LATTAKIA	3	3	917
<b>Grand total</b>	<b>151</b>	<b>135</b>	<b>46517</b>

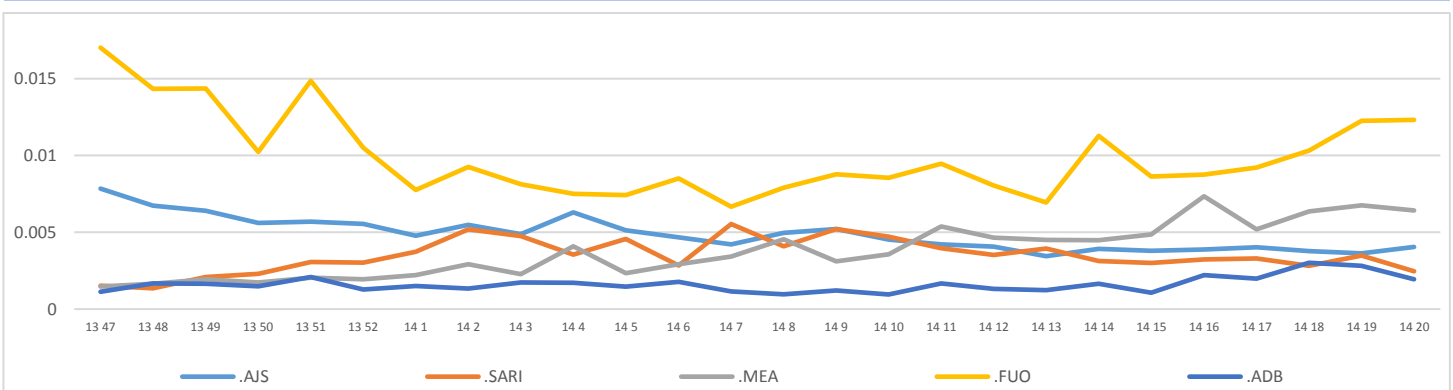
### Proportion of morbidities among >5Y



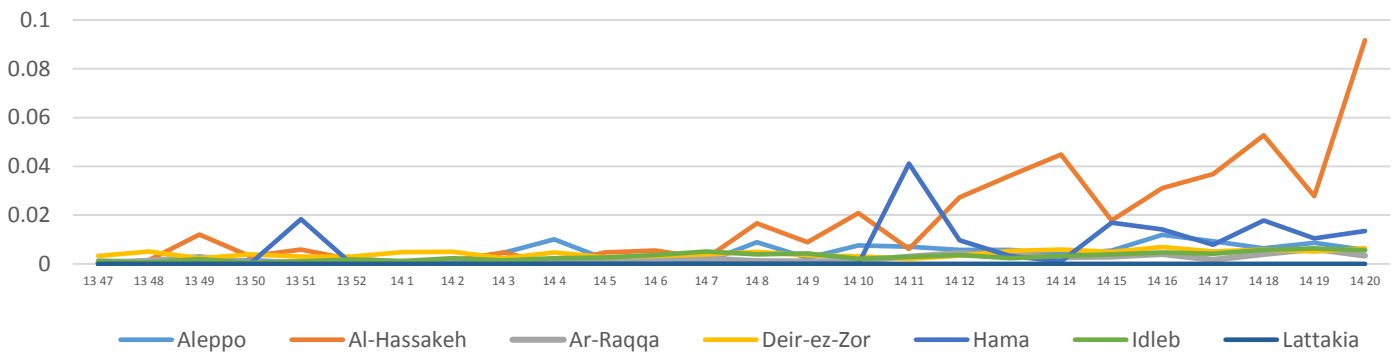
### Proportion of morbidities among <5Y



### Trends for Leading Priority Diseases in 7 Governorates – Epi week 47, 2013 to Epi week 20 2014



Proportional Morbidity of suspected Measles by Governorate, Epi Week 20



Number of cases (n) and propotional morbidity(%) by Epi week and leading priority Syndroml for governorate.Epi week 19 20

Governorate		week 19					Total*	week 20					Total*
		FUO	AJS	ABD	MEA	SARI		FUO	AJS	ABD	MEA	SARI	
Aleppo	NO.	51	63	32	74	15	8771	69	73	22	58	4	10027
	%	0.58%	0.72%	0.36%	0.84%	0.17%		0.69%	0.73%	0.22%	0.58%	0.04%	
Al-hassaka	NO.	5	0	6	16	4	566	2	1	1	53	6	578
	%	0.88%	0.00%	1.06%	2.83%	0.71%		0.35%	0.17%	0.17%	9.17%	1.04%	
Ar-rqqa	NO.	136	40	48	73	22	11831	150	38	27	37	12	11127
	%	1.15%	0.34%	0.41%	0.62%	0.19%		1.35%	0.34%	0.24%	0.33%	0.11%	
Deir-ez-zor	NO.	172	21	24	53	56	10272	147	25	22	71	48	11185
	%	1.67%	0.20%	0.23%	0.52%	0.55%		1.31%	0.22%	0.20%	0.63%	0.43%	
Hama	NO.	3	10	12	12	10	1151	8	9	12	16	8	1200
	%	0.26%	0.87%	1.04%	1.04%	0.87%		0.67%	0.75%	1.00%	1.33%	0.67%	
Idleb	NO.	189	32	7	82	53	12955	192	36	7	65	37	11483
	%	1.46%	0.25%	0.05%	0.63%	0.41%		1.67%	0.31%	0.06%	0.57%	0.32%	
Lattakia	NO.	6	0	0	0	0	275	7	7	0	0	0	917
	%	2.18%	0.00%	0.00%	0.00%	0.00%		0.76%	0.76%	0.00%	0.00%	0.00%	
TOTAL	<5	72	72	54	201	90	18708	72	67	43	198	64	19052
	>5	490	94	75	109	70	27113	503	122	48	102	51	27589
Grand total	NO.	562	166	129	310	160	45821	575	189	91	300	115	46517
	%	1.23%	0.36%	0.28%	0.68%	0.35%		1.24%	0.41%	0.20%	0.64%	0.25%	

Alerts/Outbreak Investigated and Response Activity in Epi-week 20 2014

Disease	Alert threshold	#HF reach threshold	# Cases	The most affected communities[1]	Response Activity / Actions Taken*	comments
AFP	1	2	2	Al Mayadin Abu Kamal	Our DLOs collected the stool samples despite of the difficulty.our lab expert distributed special kits to collect stool samples.	
MEA	1	68	300	Hama:latamna Ar-raqqa :Maadan Idleb:Atama Al-hasakeh Aleppo:Iss	Line list collected in all HF to identify the most affected age group .increase number of suspected cases in all governorates	
AJS	5	8	189	Aleppo:Jebel Saman Lattakea	Line list collected in some HFIdleb & Deir Ez-Zor. The result will declared soon.	
FUO (typhoid fever)	5	21	575	Ar-raqqa :Maadan Deir-ez-zor:Sbekan Lattakia	we coordinate with WASH experts to response	
ABD	5	4	91	Aleppo:Iss		
SARI	5	5	115	Deir-ez-zor: Al-raqqa		
MEN						
UCE (TB)				in all camps	We distribute the treatment in Homa and Aleppo rural	
UCE (Whooping cough)						

ABD=Acute Bloody Diarrhea AWD=Acute Watery Diarrhea AFP=Acute Flaccid Paralysis AJS=Acute Jaundice Syndrome SARI= Severe Acute Respiratory Illness  
 UXD=Unexplained Death FUO=Fever Of Unknown Origin MEA=suspected Measles MEN= suspected Meningitis UCE=Unexplained Cluster Of Health Events