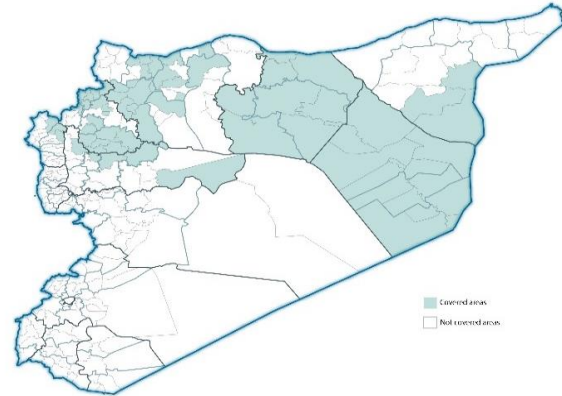


Highlights

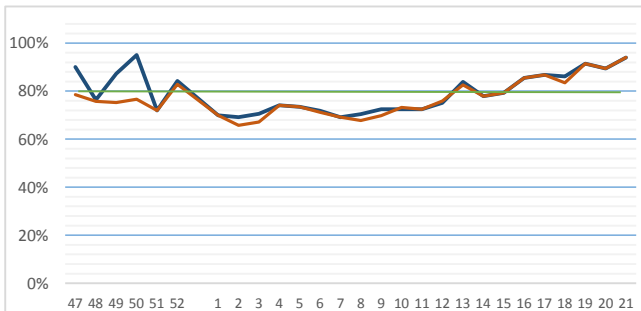
- During Epi-week no 21, 2014; 93.4% (141/151) of the health facilities across 7 Governorates provided surveillance data 93.4% of reporting sites submitted the weekly reports on time.
- The total number of consultations reported during the reporting week was 48781 (including 40.9% children under the age of five) compared to 46517 consultations during week 20. The leading cause of morbidity was FUO (Fever of Unknown Origin), with over 580 cases (1.19%).
- Ongoing measles outbreak in all governorate except Latakia (247 cases of suspected measles).
- As of week 21, 2 new AFP (Acute Flaccid Paralysis) cases reported, 25 AFP cases reported in 2014 up to date. See weekly Poliomyelitis outbreak report for more details.
- Common disease reported under others were URTI (upper respiratory tract infection), acute bronchiolitis, whooping cough, acute diarrhea, Brucellosis and Cutaneous leishmaniasis.
- More than 100 new Cutaneous leishmaniasis documented compared to 150 new cases previous week.

EWARN coverage

ACU EWARN covers 71/150 sub-District in 7 governorate. The total population currently under surveillance is about 7,189,528



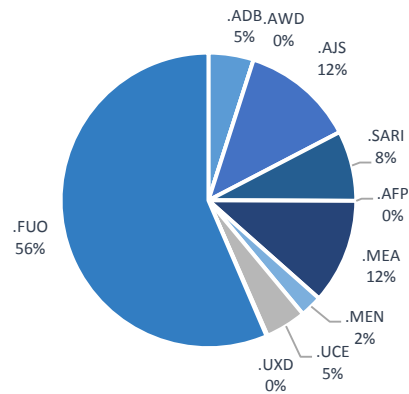
Completeness and timelines



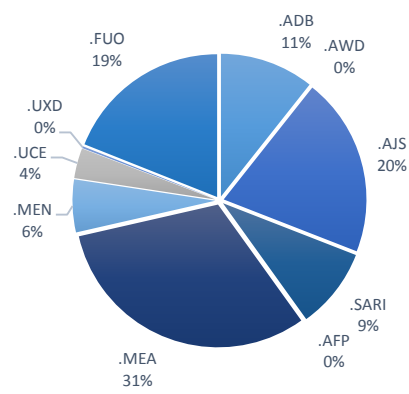
Number of sentinel sites and Total Number of Consultations per Governorate

Governorate	No of sentinel sites	Reporting Sentinel sites	%	No of consultations
ALEPPO	37	34	91.9%	9966
AL-HASSAKA	5	3	60.0%	579
AR-RAQQA	26	30	115.4%	11862
DEIR-EZ-ZOR	37	34	91.9%	10470
HAMA	7	7	100.0%	1127
IDLEB	36	29	80.6%	13229
LATTAKIA	3	4	133.3%	1548
Grand total	151	141	93.4%	48781

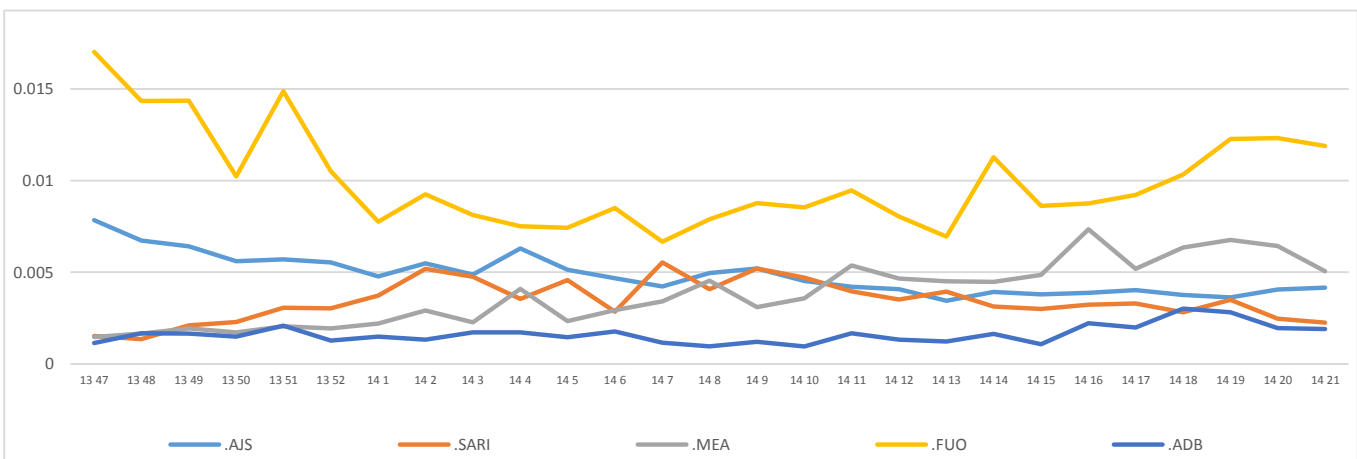
Proportion of morbidities among >5Y



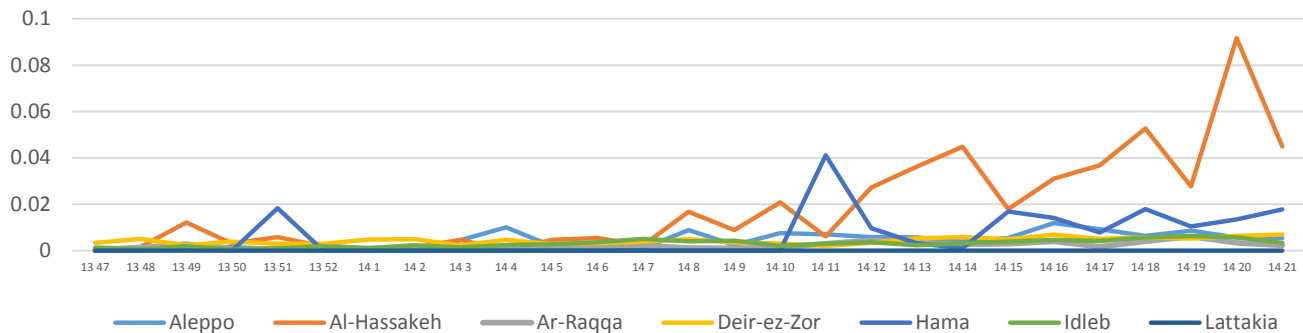
Proportion of morbidities among <5Y



Trends for Leading Priority Diseases in 7 Governorates – Epi week 47, 2013 to Epi week 21 2014



Proportional Morbidity of suspected Measles by Governorate, Epi Week 21



Number of cases (n) and propotional morbidity(%) by Epi week and leading priority Syndrom1 for governorate.Epi week 21

Governorate		week 20						week 21					
		FUO	AJS	ABD	MEA	SARI	Total*	FUO	AJS	ABD	MEA	SARI	Total*
Aleppo	NO.	69	73	22	58	4	10027	65	79	18	55	19	9966
	%	0.69%	0.73%	0.22%	0.58%	0.04%		0.65%	0.79%	0.18%	0.55%	0.19%	
Al-hassaka	NO.	2	1	1	53	6	578	25	0	5	27	9	579
	%	0.35%	0.17%	0.17%	9.17%	1.04%		4.32%	0.00%	0.86%	4.66%	1.55%	
Ar-rqqa	NO.	150	38	27	37	12	11127	151	28	40	27	12	11862
	%	1.35%	0.34%	0.24%	0.33%	0.11%		1.27%	0.24%	0.34%	0.23%	0.10%	
Deir-ez-zor	NO.	147	25	22	71	48	11185	135	31	18	73	43	10470
	%	1.31%	0.22%	0.20%	0.63%	0.43%		1.29%	0.30%	0.17%	0.70%	0.41%	
Hama	NO.	8	9	12	16	8	1200	6	12	8	20	8	1127
	%	0.67%	0.75%	1.00%	1.33%	0.67%		0.53%	1.06%	0.71%	1.77%	0.71%	
Idleb	NO.	192	36	7	65	37	11483	184	50	4	45	19	13229
	%	1.67%	0.31%	0.06%	0.57%	0.32%		1.39%	0.38%	0.03%	0.34%	0.14%	
Lattakia	NO.	7	7	0	0	0	917	14	3	0	0	0	1548
	%	0.76%	0.76%	0.00%	0.00%	0.00%		0.90%	0.19%	0.00%	0.00%	0.00%	
TOTAL	<5	72	67	43	198	64	19052	89	95	50	147	43	19926
	>5	503	122	48	102	51	27589	491	108	43	100	67	28877
Grand total	NO.	575	189	91	300	115	46517	580	203	93	247	110	48781
	%	1.24%	0.41%	0.20%	0.64%	0.25%		1.19%	0.42%	0.19%	0.51%	0.23%	

Alerts/Outbreak Investigated and Response Activity in Epi-week 21 2014

Disease	Alert threshold	#HF reach threshold	# Cases	The most affected communities[1]	Response Activity / Actions Taken*	comments
AFP	1	2	2	Hama:Muhardeh Aleppo:Jebel Saman	DLOs collected the stool samples despite of the difficulties,our lab expert distributed special kits to collect stool samples.	
MEA	1	75	247	Hama:latamna Ar-raqqa :Maadan Idleb:Atama Aleppo:Iss	Line list collected in all HFs to identify the most affected age group.	
AJS	5	6	103	Aleppo:Iss Lattakea	Line list collected in some HFIdleb & Deir Ez-Zor. The result will declared soon.	
FUO (typhoid fever)	5	27	580	Ar-raqqa :Maadan Deir-ez-zor:Sbekan Lattakia	we coordinate with WASH experts to response	
ABD	5	2	93	Aleppo:Iss		
SARI	5	4	110	Idleb:Darkosh		
MEN						
UCE (scabies)				in all camps	We distribute the treatment in Hom and Aleppo rural	
UCE (Whooping cough)						

ABD=Acute Bloody Diarrhea AWD=Acute Watery Diarrhea AFP=Acute Flaccid Paralysis AJS=Acute Jaundice Syndrome SARI= Severe Acute Respiratory Illness
UXD=Unexplained Death FUO=Fever Of Unknown Origin MEA=suspected Measles MEN= suspected Meningitis UCE=Unexplained Cluster Of Health Events

For any queries: please do not hesitate to contact the EWARN Unit at the ewarn@acu-sy.org

Epidemiological Weekly Bulletin- Syria EWARN- Epi week 21