

Highlights

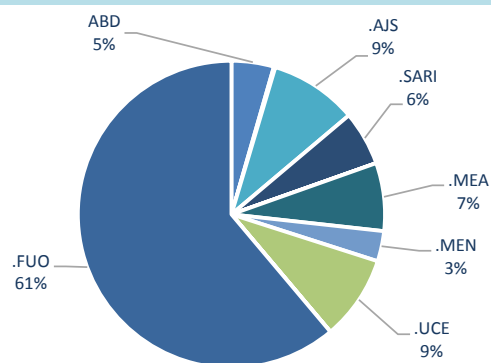
- During Epi-week no 22, 2014; 64.9% (98/151) of the health facilities across 7 Governorates provided surveillance data 64.9% of reporting sites submitted the weekly reports on time.
- The total number of consultations reported during the reporting week was 33545 (including 38,9 children under the age of five) compared to 43118 consultations during week 21. The leading cause of morbidity was FUI (Fever of Unknown Origin), with over 446 cases (1.33%).
- Ongoing measles outbreak in all governorate except Latakia(135 cases of suspected measles).
- As of week 22, no new AFP (Acute Flaccid Paralysis) cases reported, 25 AFP cases reported in 2014 up to date. See weekly Poliomyelitis outbreak report for more details.
- Common disease reported under others were URTI (upper respiratory tract infection), acute bronchiolitis, whooping cough, acute diarrhea, Brucellosis and Cutaneous leishmaniasis.

Decrease the completeness and timeliness because of the security and some DLOs were in Turkey to review AFP surveillance, 15 DLOs have been trained on AFP surveillance and active surveillance

Completeness and timeliness

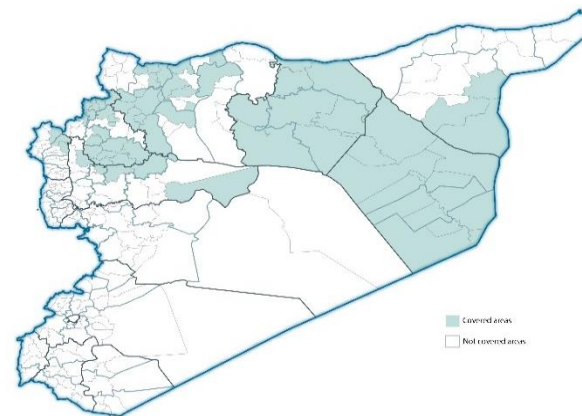


Proportion of morbidities among >5Y



EWARN coverage

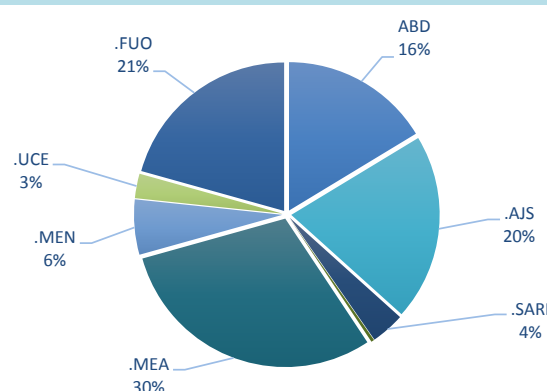
ACU EWARN covers 71/150 sub-District in 7 governorate. The total population currently under surveillance is about 7.189.528



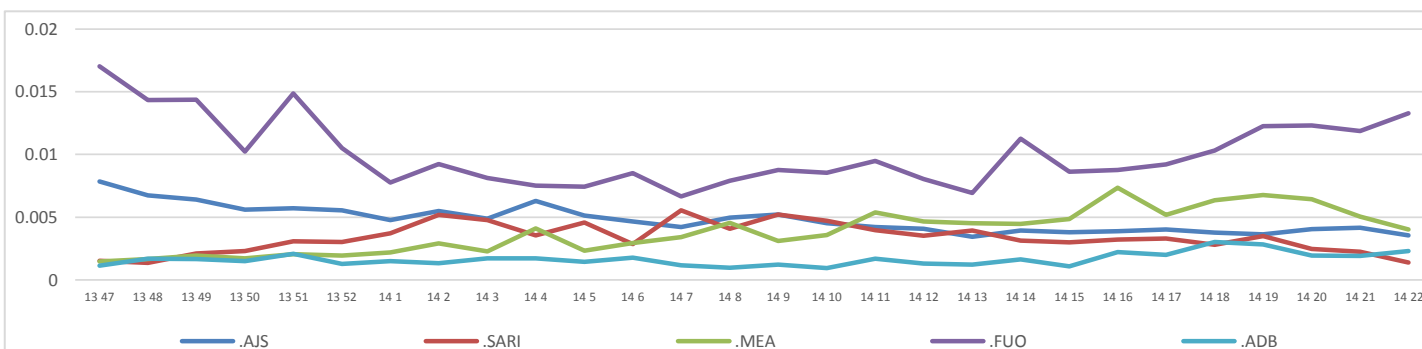
Number of sentinel sites and Total Number of Consultations per Governorate

Governorate	No of sentinel sites	Reporting Sentinels	%	No of consultations
ALEPPO	35	19	54.3%	4482
AL-HASSAKA	5	3	60.0%	580
AR-RAQQA	33	33	100.0%	14390
DEIR-EZ-ZOR	33	10	30.3%	2470
HAMA	7	7	100.0%	1114
IDLEB	33	20	60.6%	8309
LATTAKIA	6	6	100.0%	2200
Grand total	152	98	64.5%	33545

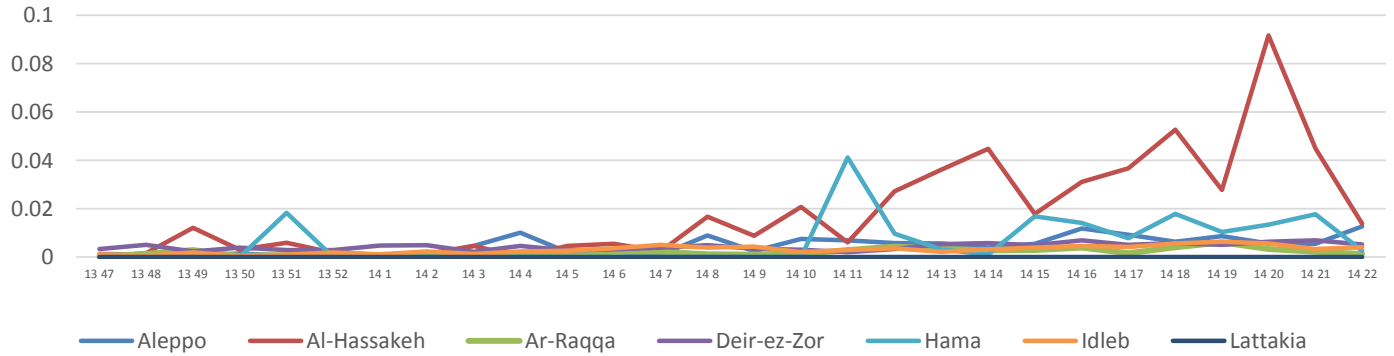
Proportion of morbidities among <5Y



Trends for Leading Priority Diseases in 7 Governorates – Epi week 47, 2013 to Epi week 22 2014



Proportional Morbidity of suspected Measles by Governorate, Epi Week 22 2014



Number of cases (n) and propotional morbidity(%) by Epi week and leading priority Syndrom1 for governorate.Epi week 22 2014

Governorate		week 21						week 22					
		FUO	AJS	ABD	MEA	SARI	Total*	FUO	AJS	ABD	MEA	SARI	Total*
Aleppo	NO.	40	48	14	84	9	9044	43	43	28	58	4	4482
	%	0.44%	0.53%	0.15%	0.93%	0.10%		0.96%	0.96%	0.62%	1.29%	0.09%	
Al-hassaka	NO.	0	0	3	22	8	627	2	2	3	8	8	580
	%	0.00%	0.00%	0.48%	3.51%	1.28%		0.34%	0.34%	0.52%	1.38%	1.38%	
Ar-rqqa	NO.	93	25	29	21	16	12636	171	27	21	19	25	14390
	%	0.74%	0.20%	0.23%	0.17%	0.13%		1.19%	0.19%	0.15%	0.13%	0.17%	
Deir-ez-zor	NO.	121	25	31	54	68	10626	88	3	10	13	4	2470
	%	1.14%	0.24%	0.29%	0.51%	0.64%		3.56%	0.12%	0.40%	0.53%	0.16%	
Hama	NO.	6	10	10	9	9	1159	4	6	11	3	6	1114
	%	0.52%	0.86%	0.86%	0.78%	0.78%		0.36%	0.54%	0.99%	0.27%	0.54%	
Idleb	NO.	149	57	3	44	39	10465	113	27	4	34	0	8309
	%	1.42%	0.54%	0.03%	0.42%	0.37%		1.36%	0.32%	0.05%	0.41%	0.00%	
Lattakia	NO.	7	17	0	0	0	583	25	11	0	0	0	2200
	%	1.20%	2.92%	0.00%	0.00%	0.00%		1.14%	0.50%	0.00%	0.00%	0.00%	
TOTAL	<5	55	84	41	159	61	18479	62	61	49	90	11	13064
	>5	361	98	49	75	88	26661	384	58	28	45	36	20527
Grand total	NO.	416	182	90	234	149	45140	446	119	77	135	47	33545
	%	0.92%	0.40%	0.20%	0.52%	0.33%	1.33%	0.35%	0.23%	0.40%	0.14%		

Alerts/Outbreak Investigated and Response Activity in Epi-week 22 2014

Disease	Alert threshold	#HF reach threshold	# Cases	The most affected communities[1]	Response Activity / Actions Taken*	comments
AFP	1	0	0		DLOs have been conductiend in central level and during 5 days had traine on AFP surveillance and activ surveillans .	
MEA	1		135		the total number is decreased in this week because of security issues .some health facilities did not reach the reports.	

ABD=Acute Bloody Diarrhea AWD=Acute Watery Diarrhea AFP=Acute Flaccid Paralysis AJS=Acute Jaundice Syndrome SARI= Severe Acute Respiratory Illnes;
 UXD=Unexplained Death FUO=Fever Of Unknown Origin MEA=suspected Measles MEN= suspected Meningitis UCE=Unexplained Cluster Of Health Events

For any queries: please do not hesitate to contact the EWARN Unit at the ewarn@acu-sy.org

Epidemiological weekly Bulletin- syna EWARN- Epi wee
18

—
s

—
k