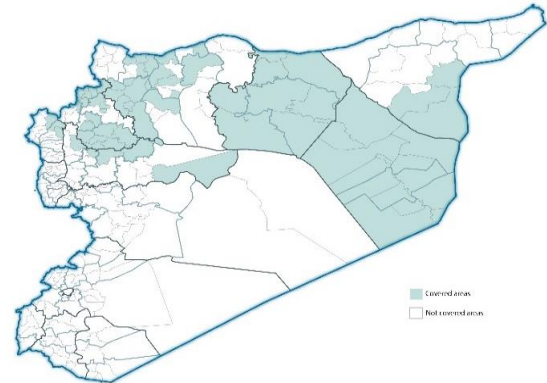


Highlights

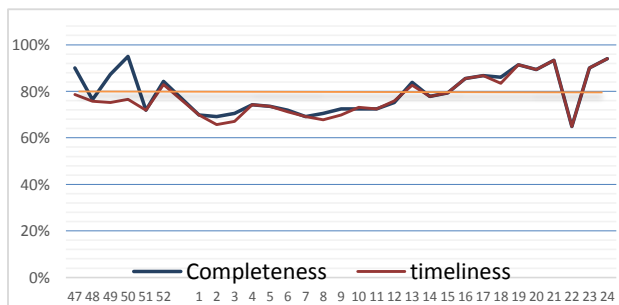
- During Epi-week no 24, 2014; 92.8% (141/151) of the health facilities across 7 Governorates provided surveillance data 92,8% of reporting sites submitted the weekly reports on time.
- The total number of consultations reported during the reporting week was 48022 (including 40% children under the age of five) compared to 46404 consultations during week 23. The leading cause of morbidity was FUO (Fever of Unknown Origin), with over 679 cases (1.41%).
- Ongoing measles outbreak in all governorate except Latakia (131 cases of suspected measles) total number of cases decreased in the last 3 weeks.
- As of week 24, 1 new AFP (Acute Flaccid Paralysis) case reported, 29 AFP cases reported in 2014 up to date. See weekly Poliomyelitis outbreak report for more details.
- Common disease reported under others were URTI (upper respiratory tract infection), acute bronchiolitis, whooping cough, acute diarrhea, Brucellosis and Cutaneous leishmaniasis.

EWARN coverage

ACU EWARN covers 71/150 sub-District in 7 governorate. The total population currently under surveillance is about 7.189.528



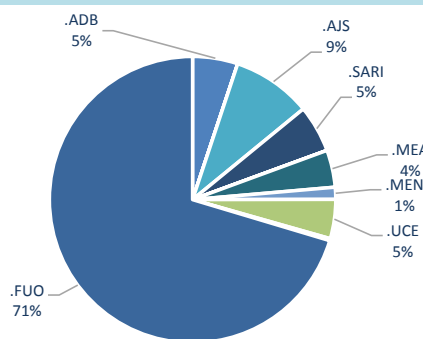
Completeness and timeliness



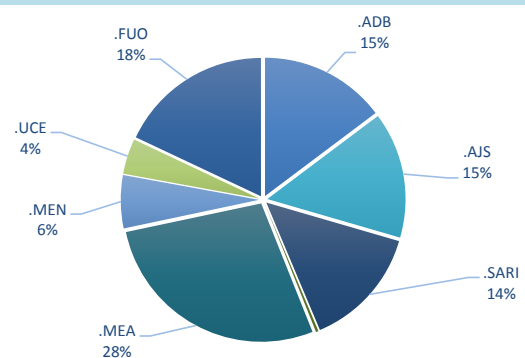
Number of sentinel sites and Total Number of Consultations per Governorate

Governorate	No of sentinel	Reporting Sentinels	No of consultations
ALEPPO	37	36	10587
AL-HASSAKA	5	7	1160
AR-RAQQA	26	30	13218
DEIR-EZ-ZOR	37	35	9858
HAMA	7	7	1148
IDLEB	36	22	11051
LATTAKIA	4	4	1000
Grand total	152	141	48022

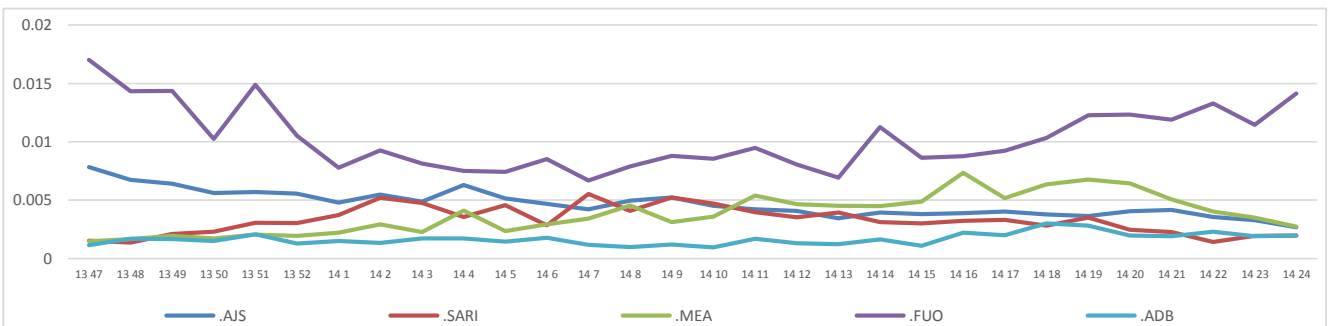
Proportion of morbidities among >5Y



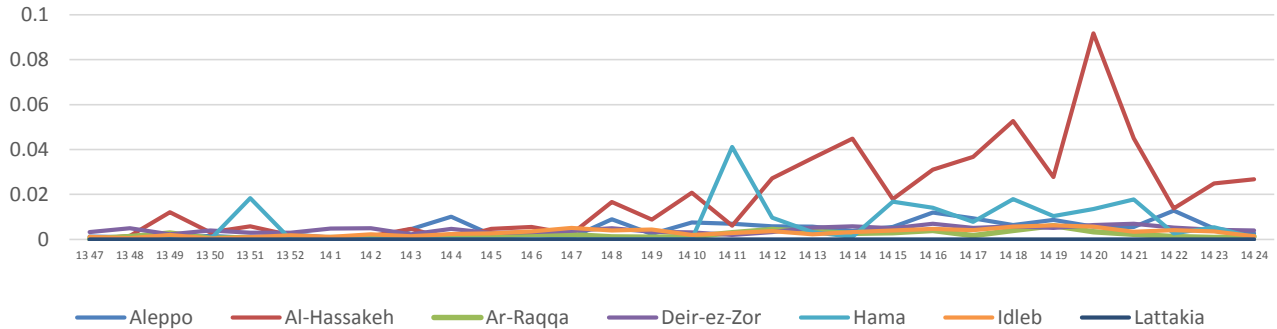
Proportion of morbidities among <5Y



Trends for Leading Priority Diseases in 7 Governorates – Epi week 47, 2013 to Epi week 24 2014



Proportional Morbidity of suspected Measles by Governorate, Epi Week 24



Number of cases (n) and propotional morbidity(%) by Epi week and leading priority SyndromI for governorate.Epi week 24

Governorate		week 23					Total*	week 24					Total*
		FUO	AJS	ABD	MEA	SARI		FUO	AJS	ABD	MEA	SARI	
Aleppo	NO.	56	65	23	52	5	10608	42	57	19	28	11	10587
	%	0.53%	0.61%	0.22%	0.49%	0.05%		0.40%	0.54%	0.18%	0.26%	0.10%	
Al-hassaka	NO.	3	1	5	11	7	440	6	0	4	31	14	1160
	%	0.68%	0.23%	1.14%	2.50%	1.59%		0.52%	0.00%	0.34%	2.67%	1.21%	
Ar-rqqa	NO.	137	13	22	10	25	11611	187	13	26	17	22	13218
	%	1.18%	0.11%	0.19%	0.09%	0.22%		1.41%	0.10%	0.20%	0.13%	0.17%	
Deir-ez-zor	NO.	137	20	21	41	35	9791	157	30	36	39	33	9858
	%	1.40%	0.20%	0.21%	0.42%	0.36%		1.59%	0.30%	0.37%	0.40%	0.33%	
Hama	NO.	6	8	8	6	7	1205	6	5	7	1	6	1148
	%	0.50%	0.66%	0.66%	0.50%	0.58%		0.52%	0.44%	0.61%	0.09%	0.52%	
Idleb	NO.	181	39	10	42	11	12064	273	19	1	15	9	11051
	%	1.50%	0.32%	0.08%	0.35%	0.09%		2.47%	0.17%	0.01%	0.14%	0.08%	
Lattakia	NO.	11	6	0	0	0	685	8	4	0	0	0	1000
	%	1.61%	0.88%	0.00%	0.00%	0.00%		0.80%	0.40%	0.00%	0.00%	0.00%	
TOTAL	<5	66	71	52	112	39	18785	61	50	50	94	48	19411
	>5	465	81	37	50	51		27629	620	79	45	37	
Grand total	NO.	531	152	89	162	90	46404	679	128	93	131	95	48022
	%	1.14%	0.33%	0.19%	0.35%	0.19%		1.41%	0.27%	0.19%	0.27%	0.20%	

Alerts/Outbreak Investigated and Response Activity in Epi-week 24 2014

Disease	Alert threshold	#HF reach threshold	# Cases	The most affected communities[1]	Response Activity / Actions Taken*	comments
AFP	1	1	1	Alepo :Azaz	DLOs collected the stool samples despite of the difficulty. lab expert distributed special kits to collect stool samples.	
MEA	1	49	131	Alhassakeh Deir-ez-zor Idleb:Atama Aleppo:Iss	Number of cases decreased last 3 weeks .and we still collecting line list.	
AJS	5	3	128	Aleppo:Iss Lattakea	Line list collected in some HFIdleb & Deir Ez-Zor. The result will declared soon.	
FUO (typhoid fever)	5	13	679	Ar-raqqa :Maadan Deir-ez-zor Idleb	Increase the total number of typhoid fever in Deir-Ez-Zor and Idleb .	

ABD=Acute Bloody Diarrhea AWD=Acute Watery Diarrhea AFP=Acute Flaccid Paralysis AJS=Acute Jaundice Syndrome SARI= Severe Acute Respiratory Illnes:
UXD=Unexplained Death FUO=Fever Of Unknown Origin MEA=suspected Measles MEN= suspected Meningitis UCE=Unexplained Cluster Of Health Events

For any queries: please do not hesitate to contact the EWARN Unit at the ewarn@acu-sy.org

Epidemiological weekly Bulletin- Syria EWARN- Epi wee
18

—
S

—
K