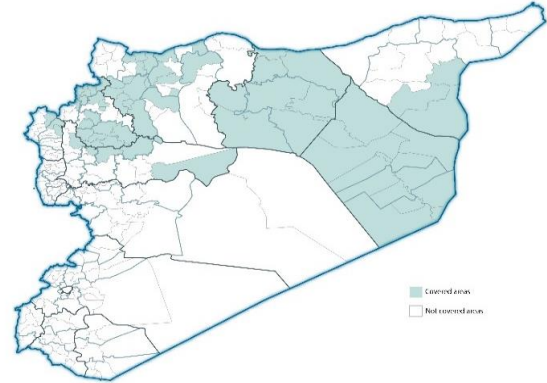


Highlights

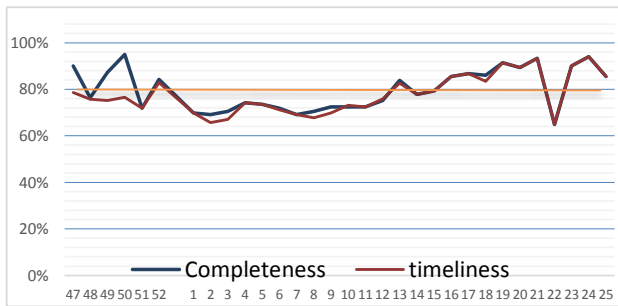
- During Epi-week no 25, 2014; 84.2% (128/151) of the health facilities across 7 Governorates provided surveillance data 84.2% of reporting sites submitted the weekly reports on time.
- The total number of consultations reported during the reporting week was 43741 (including 40% children under the age of five) compared to 48022 consultations during week 24. The leading cause of morbidity was FUO (Fever of Unknown Origin), with over 673 cases (1.54%).
- Ongoing measles outbreak in all governorate except Latakia (139 cases of suspected measles), Line list collected in all HF's from week 4-2014.
- As of week 25, no new AFP (Acute Flaccid Paralysis) cases reported, 29 AFP cases reported in 2014 up to date. See AFP surveillance weekly report for more details.
- Common disease reported under others were URTI (upper respiratory tract infection), acute bronchiolitis, whooping cough, acute diarrhea, Brucellosis and Cutaneous leishmaniasis.

EWARN coverage

ACU EWARN covers 71/150 sub-District in 7 governorate. The total population currently under surveillance is about 7.189.528



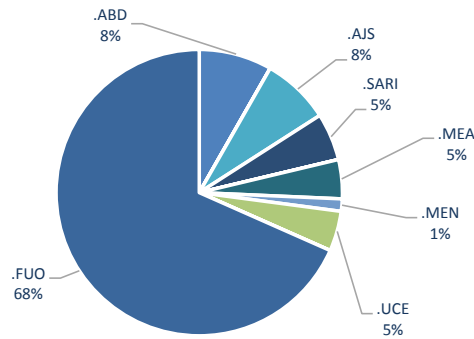
Completeness and timeliness



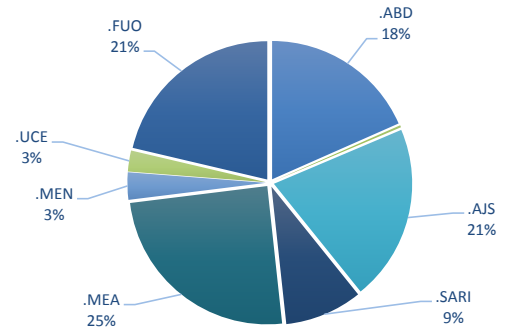
Number of sentinel sites and Total Number of Consultations per Governorate

Governorate	No of sentinel	Reporting Sentinels	No of consultations
ALEPPO	31	23	5660
AL-HASSAKA	7	7	1170
AR-RAQQA	33	28	12820
DEIR-EZ-ZOR	37	33	8849
HAMA	7	6	1055
IDLEB	33	27	12985
LATTAKIA	4	4	1202
Grand total	152	128	43741

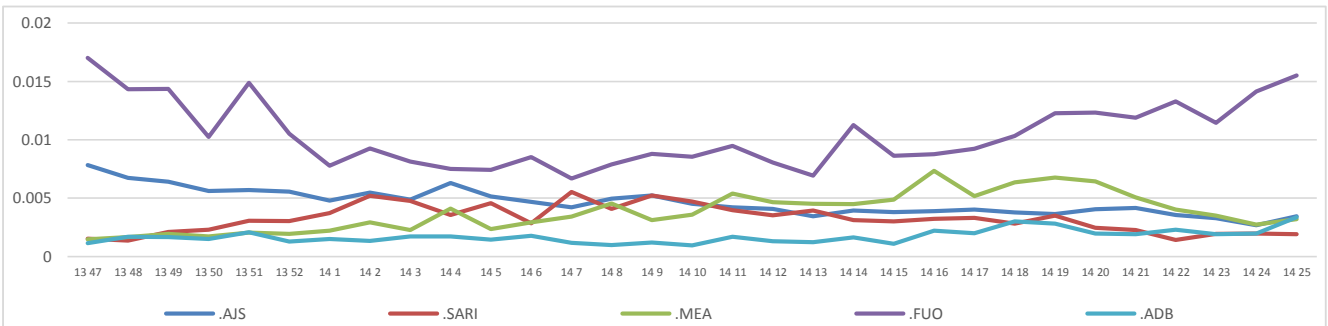
Proportion of morbidities among >5Y



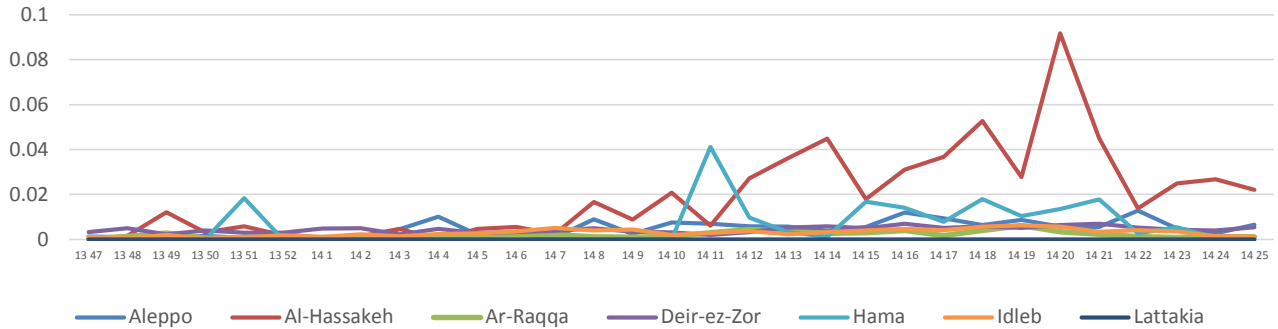
Proportion of morbidities among <5Y



Trends for Leading Priority Diseases in 7 Governorates – Epi week 47, 2013 to Epi week 25 2014



Proportional Morbidity of suspected Measles by Governorate, Epi Week 25



Number of cases (n) and propotional morbidity(%) by Epi week and leading priority Syndrom I for governorate.Epi week 25

Governorate		week 24					Total*	week 25					Total*
		FUO	AJS	ABD	MEA	SARI		FUO	AJS	ABD	MEA	SARI	
Aleppo	NO.	42	57	19	28	11	10587	28	35	16	35	4	5660
	%	0.40%	0.54%	0.18%	0.26%	0.10%		0.49%	0.62%	0.28%	0.62%	0.07%	
Al-hassaka	NO.	6	0	4	31	14	1160	8	7	9	25	11	1170
	%	0.52%	0.00%	0.34%	2.67%	1.21%		0.68%	0.60%	0.77%	2.14%	0.94%	
Ar-rqqa	NO.	187	13	26	17	22	13218	156	22	67	15	30	12820
	%	1.41%	0.10%	0.20%	0.13%	0.17%		1.22%	0.17%	0.52%	0.12%	0.23%	
Deir-ez-zor	NO.	157	30	36	39	33	9858	185	37	40	47	20	8849
	%	1.59%	0.30%	0.37%	0.40%	0.33%		2.09%	0.42%	0.45%	0.53%	0.23%	
Hama	NO.	6	5	7	1	6	1148	12	10	8	0	8	1055
	%	0.52%	0.44%	0.61%	0.09%	0.52%		1.14%	0.95%	0.76%	0.00%	0.76%	
Idleb	NO.	273	19	1	15	9	11051	276	37	6	17	8	12985
	%	2.47%	0.17%	0.01%	0.14%	0.08%		2.13%	0.28%	0.05%	0.13%	0.06%	
Lattakia	NO.	8	4	0	0	0	1000	9	1	0	0	0	1202
	%	0.80%	0.40%	0.00%	0.00%	0.00%		0.75%	0.08%	0.00%	0.00%	0.00%	
TOTAL	<5	61	50	50	94	48	19411	87	84	75	101	37	17809
	>5	620	79	45	37	47		28745	588	66	71	38	
Grand total	NO.	679	128	93	131	95	48022	674	149	146	139	81	43741
	%	1.41%	0.27%	0.19%	0.27%	0.20%		1.54%	0.34%	0.33%	0.32%	0.19%	

Alerts/Outbreak Investigated and Response Activity in Epi-week 25 2014

Disease	Alert threshold	#HF reach threshold	# Cases	The most affected communities[1]	Response Activity / Actions Taken*	comments
AFP	1	0	0		Our DLOs collected the stool samples despite of the difficulty.our lab expert distributed special kits to collect stool samples.	
MEA	1	44	139	Hama:latamna Ar-rqqa :Maadan Idleb:Atama Aleppo:Iss	Line list collected in all HFs .	
AJS	5	5	149	Aleppo		
FUO (typhoid fever)	5	5	674	Deir-ez-zor:Sbekan	we coordinate with WASH experts to response	

ABD=Acute Bloody Diarrhea AWD=Acute Watery Diarrhea AFP=Acute Flaccid Paralysis AJS=Acute Jaundice Syndrome SARI= Severe Acute Respiratory Illnes.
UXD=Unexplained Death FUO=Fever Of Unknown Origin MEA=suspected Measles MEN= suspected Meningitis UCE=Unexplained Cluster Of Health Events

For any queries: please do not hesitate to contact the EWARN Unit at the ewarn@acu-sy.org

Epidemiological Weekly Bulletin- Syria EWARN- Epi week 18

—
s

—
k