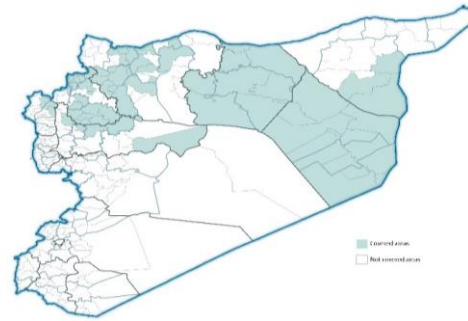


Highlights

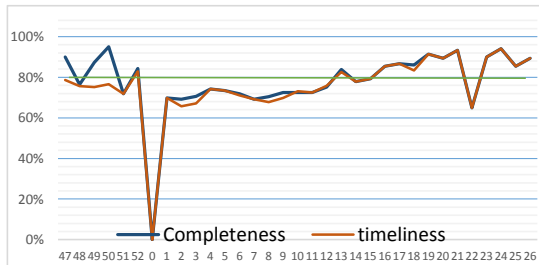
- During Epi-week no 26, 2014; 88.8% (135/151) of the health facilities across 7 Governorates provided surveillance data 88.8% of reporting sites submitted the weekly reports on time.
- The total number of consultations reported during the reporting week was 47653 (including 40% children under the age of five) compared to 43741 consultations during week 25. The leading cause of morbidity was FVO (Fever of Unknown Origin), with over 730 cases (1.53%).
- 136 measles cases reported in this week, the total number decreased, line list collected by name and age and district.
- As of week 26, 1 new AFP (Acute Flaccid Paralysis) cases reported, 30 AFP cases reported in 2014 up to date. See weekly Poliomyelitis outbreak report for more details.
- Common disease reported under others were URTI (upper respiratory tract infection), acute bronchiolitis, whooping cough, acute diarrhea, Brucellosis and Cutaneous leishmaniasis.

EWARN coverage

ACU EWARN covers 71/150 sub-District in 7 governorate. The total population currently under surveillance is about 7.189.528



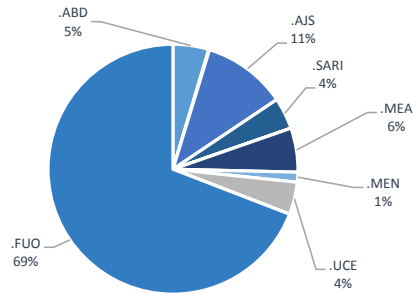
Completeness and timeliness



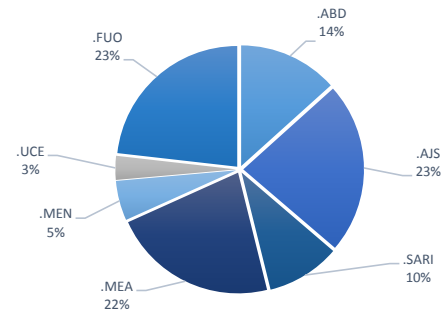
Number of sentinel sites and Total Number of Consultations per Governorate

Governorate	No of sentinel sites	Reporting Sentinel sites	%	No of consultations
ALEPPO	36	36	100.0%	10257
AL-HASSAKA	7	7	100.0%	1069
AR-RAQQA	33	30	90.9%	12807
DEIR-EZ-ZOR	33	24	72.7%	7718
HAMA	7	6	85.7%	1093
IDLEB	31	27	87.1%	13261
LATTAKIA	5	5	100.0%	1448
Grand total	152	135	88.8%	47653

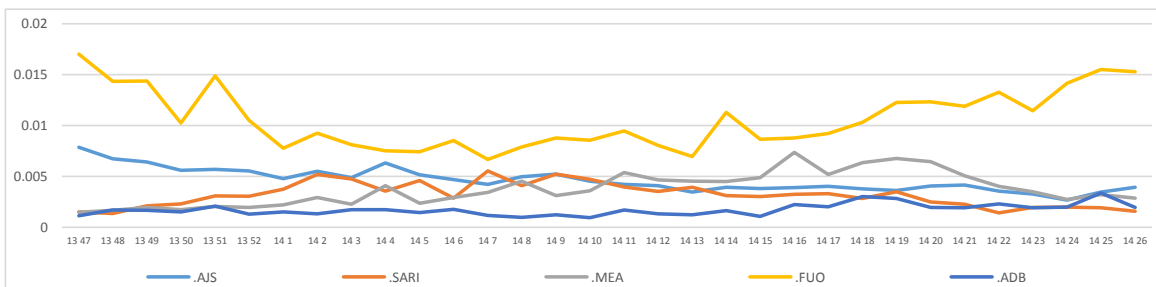
Proportion of morbidities among >5Y



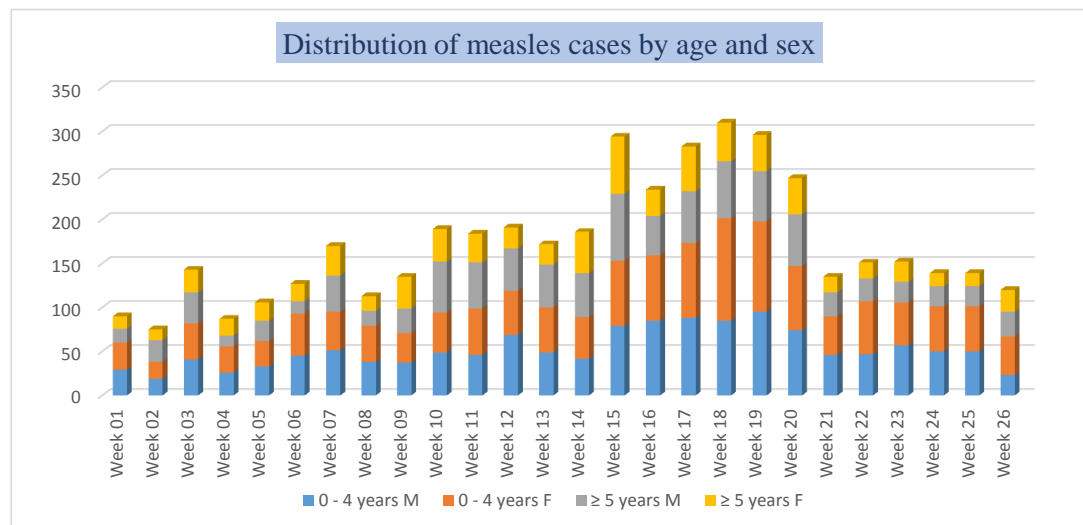
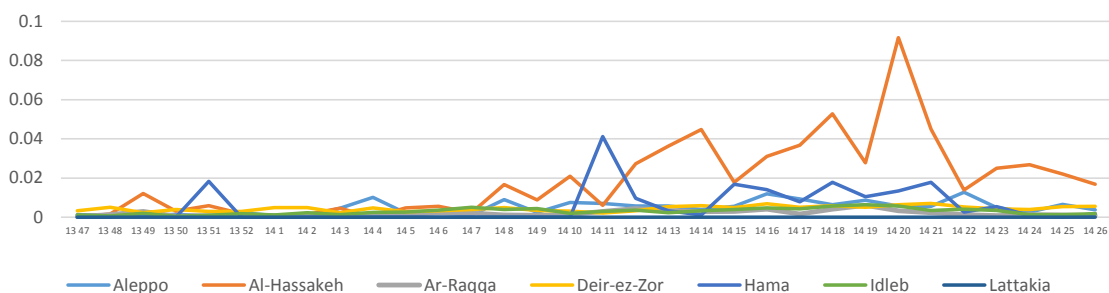
Proportion of morbidities among <5Y



Trends for Leading Priority Diseases in 7 Governorates – Epi week 47, 2013 to Epi week 26 2014



Proportional Morbidity of suspected Measles by Governorate, Epi Week 26



Number of cases (n) and propotional morbidity(%) by Epi week and leading priority SyndromeI for governorate.Epi week 26

Governorate	week 25						week 26						
	FUO	AJS	ABD	MEA	SARI	Total*	FUO	AJS	ABD	MEA	SARI	Total*	
Aleppo	NO.	28	35	16	35	4	5660	39	64	24	38	6	10257
	%	0.49%	0.62%	0.28%	0.62%	0.07%		0.38%	0.62%	0.23%	0.37%	0.06%	
Al-hassaka	NO.	8	7	9	25	11	1170	9	2	9	18	9	1069
	%	0.68%	0.60%	0.77%	2.14%	0.94%		0.84%	0.19%	0.84%	1.68%	0.84%	
Ar-rqqa	NO.	156	22	67	15	30	12820	145	24	21	11	24	12807
	%	1.22%	0.17%	0.52%	0.12%	0.23%		1.13%	0.19%	0.16%	0.09%	0.19%	
Deir-ez-zor	NO.	185	37	40	47	20	8849	183	31	25	43	19	7718
	%	2.09%	0.42%	0.45%	0.53%	0.23%		2.37%	0.40%	0.32%	0.56%	0.25%	
Hama	NO.	12	10	8	0	8	1055	5	9	12	2	8	1093
	%	1.14%	0.95%	0.76%	0.00%	0.76%		0.46%	0.82%	1.10%	0.18%	0.73%	
Idleb	NO.	276	37	6	17	8	12985	334	52	2	24	9	13261
	%	2.13%	0.28%	0.05%	0.13%	0.06%		2.52%	0.39%	0.02%	0.18%	0.07%	
Lattakia	NO.	9	1	0	0	0	1202	15	5	0	0	0	1448
	%	0.75%	0.08%	0.00%	0.00%	0.00%		1.04%	0.35%	0.00%	0.00%	0.00%	
TOTAL	<5	87	84	75	101	37	17809	87	86	50	83	37	18784
	>5	588	66	71	38	46	25708	643	101	43	53	38	29035
Grand total	NO.	674	149	146	139	81	43741	730	187	93	136	75	47653
	%	1.54%	0.34%	0.33%	0.32%	0.19%		1.53%	0.39%	0.20%	0.29%	0.16%	



Alerts/Outbreak Investigated and Response Activity in Epi-week 26 2014

Disease	Alert threshold	#HF reach threshold	# Cases	The most affected communities[1]	Response Activity / Actions Taken*	comments
AFP	1	1	1	Idleb :Atma	active surveillance in selective HFs started by DLOs in all governorate	
MEA	1	52	136	Idleb Ar-raqqa Deir-ez-zor	Line list collected in all HFs to identify the most affected age group.	
AJS	5	8	187	Aleppo Aleppo:Iss Lattakea	Line list collected in some HFs Idleb & Deir Ez-Zor. The result will declared soon.	
FUO (typhoid fever)	5	19	730	Ar-raqqa Deir-ez-zor Idleb	we coordinate with WASH experts to response	

ABD=Acute Bloody Diarrhea AWD=Acute Watery Diarrhea AFP=Acute Flaccid Paralysis AJS=Acute Jaundice Syndrome SARI= Severe Acute Respiratory Illness

UXD=Unexplained Death FUO=Fever Of Unknown Origin MEA=suspected Measles MEN= suspected Meningitis UCE=Unexplained Cluster Of Health Events

For any queries: please do not hesitate to contact the EWARN Unit at the ewarn@acu-sy.org

Epidemiological Weekly Bulletin- Syria EWARN- Epi week 18

