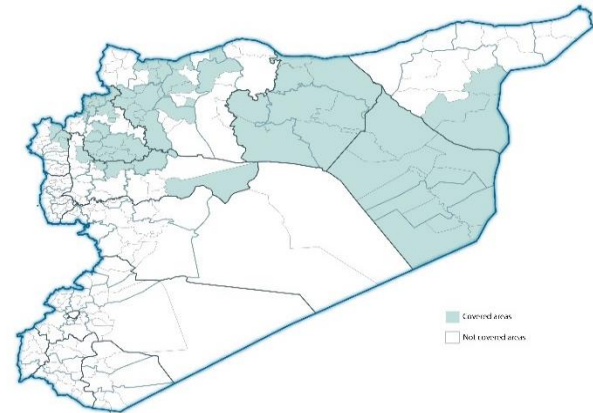


Highlights

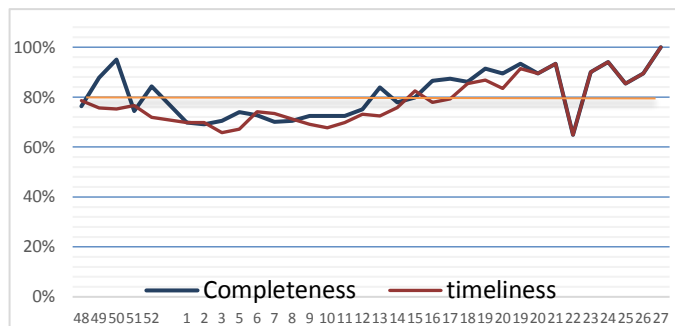
- During Epi-week no 27, 2014; 98.7% (151/153) of the health facilities across 7 Governorates provided surveillance data 98,7% of reporting sites submitted the weekly reports on time.
- The total number of consultations reported during the reporting week was 47681 (including 40% children under the age of five) compared to 47653 consultations during week 26. The leading cause of morbidity was FUO (Fever of Unknown Origin), with over 574 cases (1.20%).
- 119 measles cases reported in this week, the total number decreased, line list collected by name and age and district.
- As of week 27, no new AFP (Acute Flaccid Paralysis) cases reported, 30 AFP cases reported in 2014 up to date. See weekly Poliomyelitis outbreak report for more details.
- Common disease reported under others were URTI (upper respiratory tract infection), acute bronchiolitis, whooping cough, acute diarrhea, Brucellosis and Cutaneous leishmaniasis.

EWARN coverage

ACU EWARN covers 71/150 sub-District in 7 governorate. The total population currently under surveillance is about 7.189.528



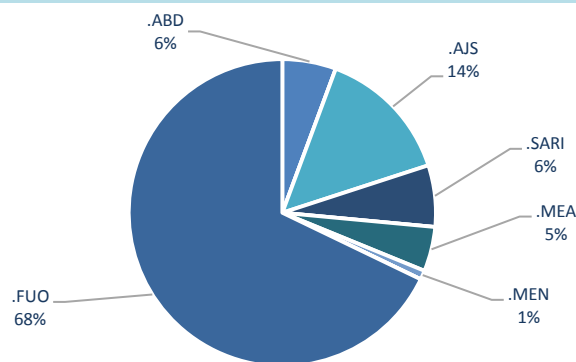
Completeness and timeliness



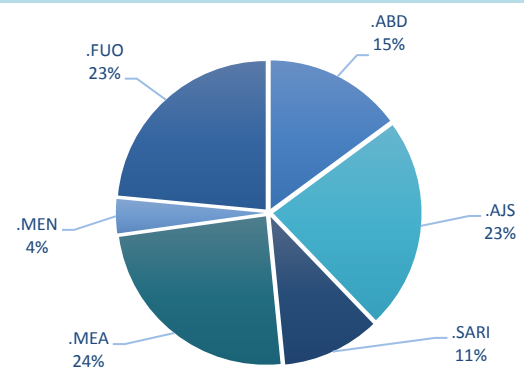
Number of sentinel sites and Total Number of Consultations per Governorate

Governorate	No of sentinel sites	Reporting Sentinel sites	%	No of consultations
ALEPPO	37	37	100.0%	10790
AL-HASSAKA	7	7	100.0%	924
AR-RAQQA	37	37	100.0%	13920
DEIR-EZ-ZOR	30	29	96.7%	7453
HAMA	7	6	85.7%	1097
IDLEB	30	27	90.0%	12100
LATTAKIA	5	5	100.0%	1397
Grand total	153	151	98.7%	47681

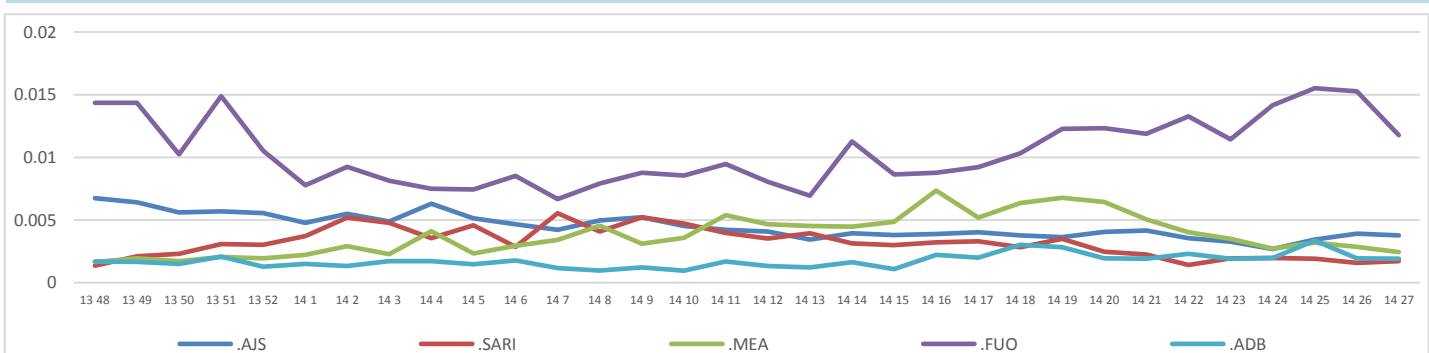
Proportion of morbidities among >5Y



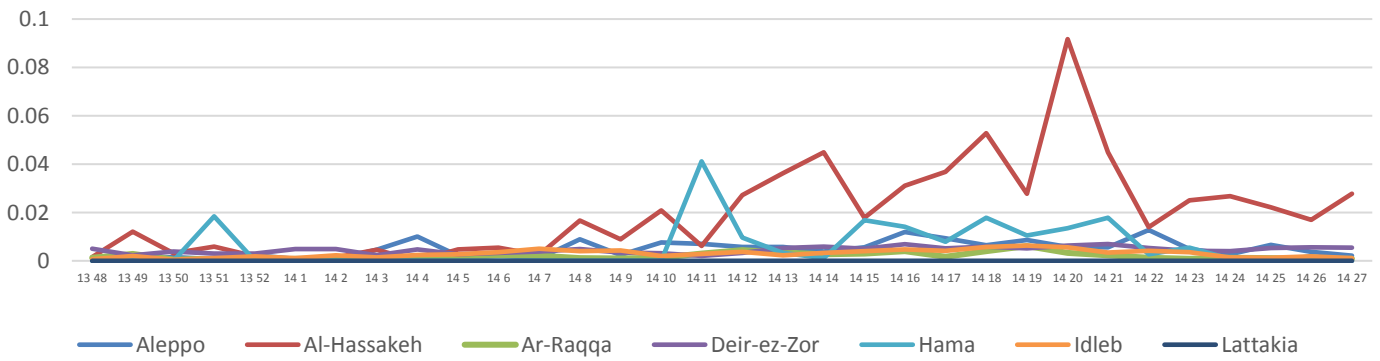
Proportion of morbidities among <5Y



Trends for Leading Priority Diseases in 7 Governorates – Epi week 47, 2013 to Epi week 27 2014



Proportional Morbidity of suspected Measles by Governorate, Epi Week 27



Number of cases (n) and propotional morbidity(%) by Epi week and leading priority SyndromeI for governorate.Epi week 27

Governorate		week 26						week 27					
		FUO	AJS	ABD	MEA	SARI	Total*	FUO	AJS	ABD	MEA	SARI	Total*
Aleppo	NO.	39	64	24	38	6	10257	49	69	16	24	7	10790
	%	0.38%	0.62%	0.23%	0.37%	0.06%		0.45%	0.64%	0.15%	0.22%	0.06%	
Al-hassaka	NO.	9	2	9	18	9	1069	4	4	8	27	7	924
	%	0.84%	0.19%	0.84%	1.68%	0.84%		0.43%	0.43%	0.87%	2.92%	0.76%	
Ar-rqqa	NO.	145	24	21	11	24	12807	130	28	32	12	25	13920
	%	1.13%	0.19%	0.16%	0.09%	0.19%		0.93%	0.20%	0.23%	0.09%	0.18%	
Deir-ez-zor	NO.	183	31	25	43	19	7718	163	33	26	42	22	7453
	%	2.37%	0.40%	0.32%	0.56%	0.25%		2.19%	0.44%	0.35%	0.56%	0.30%	
Hama	NO.	5	9	12	2	8	1093	6	10	8	0	8	1097
	%	0.46%	0.82%	1.10%	0.18%	0.73%		0.55%	0.91%	0.73%	0.00%	0.73%	
Idleb	NO.	334	52	2	24	9	13261	208	28	3	14	15	12100
	%	2.52%	0.39%	0.02%	0.18%	0.07%		1.72%	0.23%	0.02%	0.12%	0.12%	
Lattakia	NO.	15	5	0	0	0	1448	14	12	0	0	0	1397
	%	1.04%	0.35%	0.00%	0.00%	0.00%		1.00%	0.86%	0.00%	0.00%	0.00%	
TOTAL	<5	87	86	50	83	37	18784	82	80	52	85	37	18367
	>5	643	101	43	53	38		492	104	41	34	47	
Grand total	NO.	730	187	93	136	75	47653	574	184	93	119	84	47681
	%	1.53%	0.39%	0.20%	0.29%	0.16%		1.20%	0.39%	0.20%	0.25%	0.18%	

Alerts/Outbreak Investigated and Response Activity in Epi-week 27 2014

Disease	Alert threshold	#HF reach threshold	# Cases	The most affected communities[1]	Response Activity / Actions Taken*	comments
AFP	1	0	0		Our DLOs collected the stool samples despite of the difficulty.our lab expert distributed special kits to collect stool samples.	
MEA	1	23	119	Hama: Deir-ez-zor Idleb:	Line list collected in all HFs to identify the most affected age group.we started from Epi week 4 till now.	
AJS	5	3	184	Aleppo Idleb		
FUO (typhoid fever)	5	19	574	Ar-raqqa Deir-ez-zor Idleb	we coordinate with WASH experts to response	

ABD=Acute Bloody Diarrhea AWD=Acute Watery Diarrhea AFP=Acute Flaccid Paralysis AJS=Acute Jaundice Syndrome SARI= Severe Acute Respiratory Illness
 UXD=Unexplained Death FUO=Fever Of Unknown Origin MEA=suspected Measles MEN= suspected Meningitis UCE=Unexplained Cluster Of Health Events

For any queries: please do not hesitate to contact the EWARN Unit at the ewarn@acu-sy.org

Epidemiological weekly Bulletin- Syria EWARN- Epi week 18