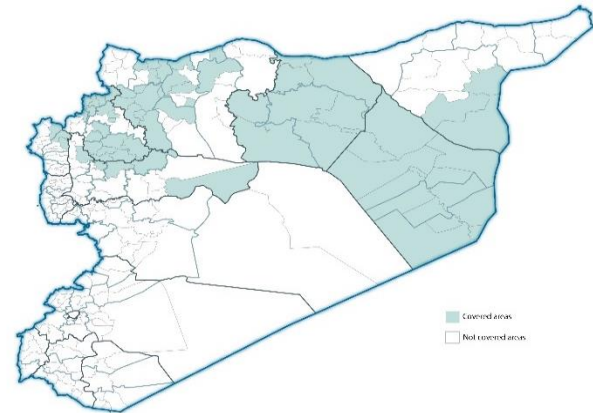


Highlights

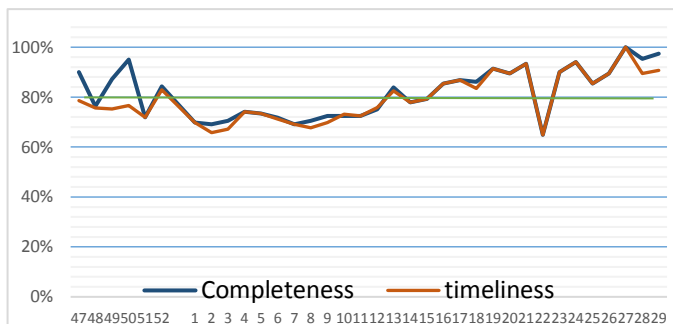
- During Epi-week no 29, 2014; 95.5% (147/153) of the health facilities across 7 Governorates provided surveillance data 88.9% of reporting sites submitted the weekly reports on time.
- The total number of consultations reported during the reporting week was 47624 (including 42% children under the age of five) compared to 48008 consultations during week 28. The leading cause of morbidity was FUO (Fever of Unknown Origin), with over 622 cases (1.31%).
- 145 measles cases reported in this week, the total number decreased, line list collected by name and age and district, started at week No 4.
- As of week 28, 1 new AFP (Acute Flaccid Paralysis) cases reported, 36 AFP cases reported in 2014 up to date. See weekly Poliomyelitis outbreak report for more details.
- Common disease reported under others were URTI (upper respiratory tract infection), acute bronchiolitis, whooping cough, acute diarrhea, Brucellosis and Cutaneous leishmaniasis.

EWARN coverage

ACU EWARN covers 71/150 sub-District in 7 governorate. The total population currently under surveillance is about 7.189.528



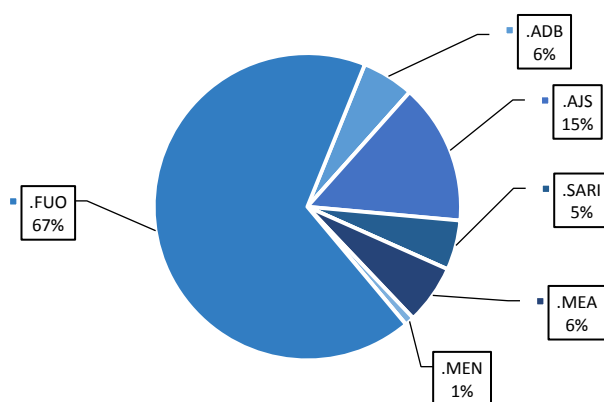
Completeness and timeliness



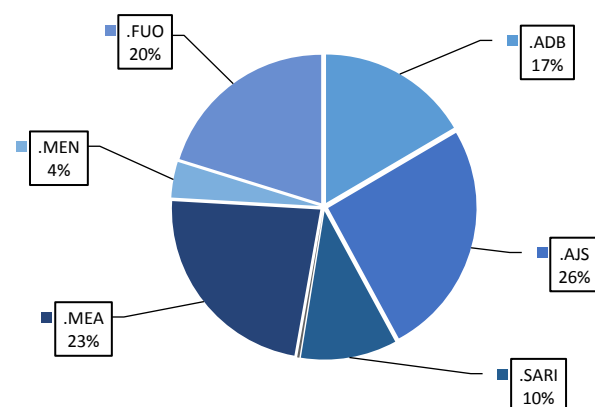
Number of sentinel sites and Total Number of Consultations per Governorate

Governorate	No of sentinel sites	Reporting Sentinel sites	No of consultations
ALEPPO	38	38	100.0%
AL-HASSAKA	7	7	100.0%
AR-RAQQA	30	28	93.3%
DEIR-EZ-ZOR	37	37	100.0%
HAMA	7	6	85.7%
IDLEB	30	26	86.7%
LATTAKIA	5	5	100.0%
Grand total	154	147	95.5%

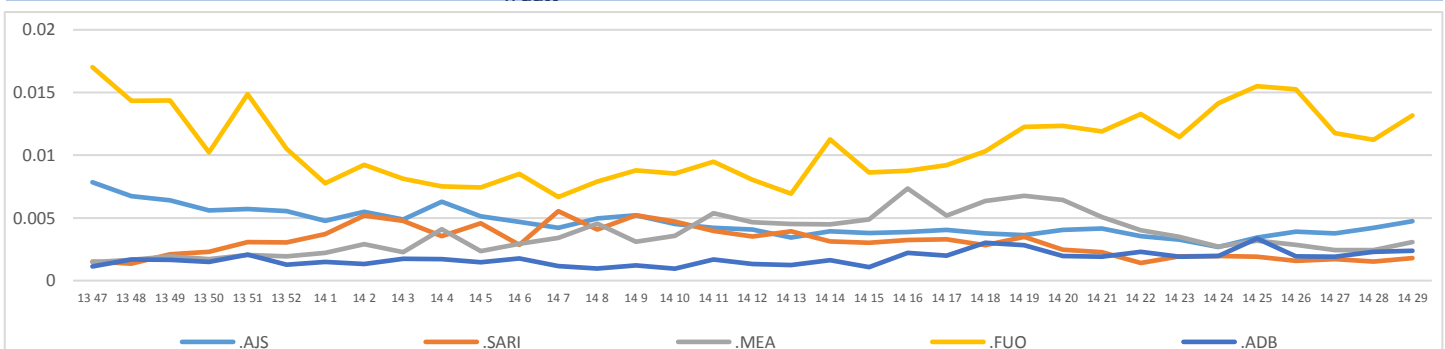
Proportion of morbidities among >5Y



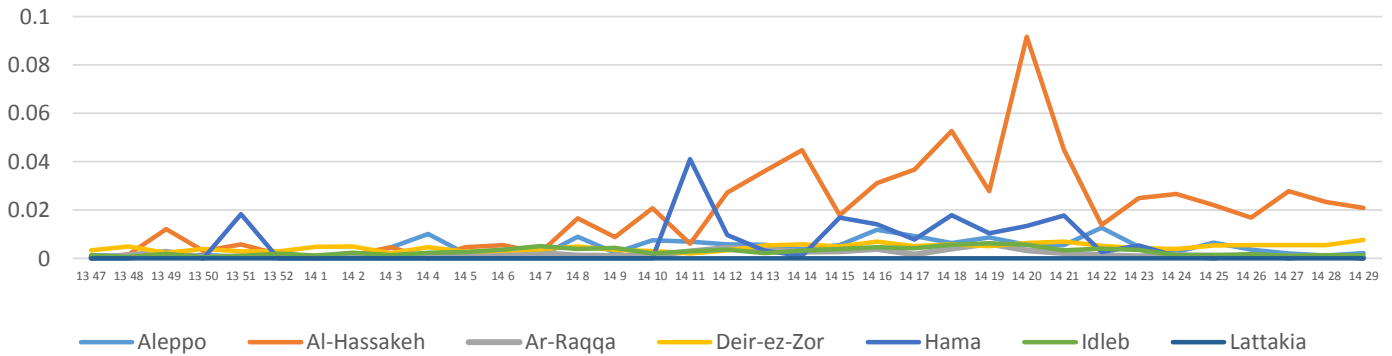
Proportion of morbidities among <5Y



Trends for Leading Priority Diseases in 7 Governorates – Epi week 47, 2013 to Epi week 29 2014



Proportional Morbidity of suspected Measles by Governorate, Epi Week 29



Number of cases (n) and propotional morbidity(%) by Epi week and leading priority SyndromI for governorate.Epi week 29

Governorate		week 28						week 29					
		FUO	AJS	ABD	MEA	SARI	Total*	FUO	AJS	ABD	MEA	SARI	Total*
Aleppo	NO.	34	37	21	12	7	10379	57	61	20	22	8	10214
	%	0.33%	0.36%	0.20%	0.12%	0.07%		0.56%	0.60%	0.20%	0.22%	0.08%	
Al-hassaka	NO.	7	4	18	21	6	892	10	4	16	24	12	1150
	%	0.78%	0.45%	2.02%	2.35%	0.67%		0.87%	0.35%	1.39%	2.09%	1.04%	
Ar-rqqa	NO.	117	31	32	13	14	12631	107	15	7	3	17	10761
	%	0.93%	0.25%	0.25%	0.10%	0.11%		0.99%	0.14%	0.07%	0.03%	0.16%	
Deir-ez-zor	NO.	202	80	30	54	30	9869	248	92	54	82	25	10579
	%	2.05%	0.81%	0.30%	0.55%	0.30%		2.34%	0.87%	0.51%	0.78%	0.24%	
Hama	NO.	9	8	7	1	6	1090	8	7	10	0	14	1086
	%	0.83%	0.73%	0.64%	0.09%	0.55%		0.74%	0.64%	0.92%	0.00%	1.29%	
Idleb	NO.	155	35	2	16	10	11725	180	40	5	14	9	12226
	%	1.32%	0.30%	0.02%	0.14%	0.09%		1.47%	0.33%	0.04%	0.11%	0.07%	
Lattakia	NO.	15	7	0	0	0	1422	12	5	0	0	0	1308
	%	1.05%	0.49%	0.00%	0.00%	0.00%		0.92%	0.38%	0.00%	0.00%	0.00%	
TOTAL	<5	94	107	65	79	36	18649	83	105	68	95	43	18105
	>5	445	95	45	38	37	29345	539	119	44	50	42	29084
Grand total	NO.	539	202	110	117	73	48008	622	224	112	145	85	47324
	%	1.12%	0.42%	0.23%	0.24%	0.15%		1.31%	0.47%	0.24%	0.31%	0.18%	

Alerts/Outbreak Investigated and Response Activity in Epi-week 29 2014

Disease	Alert threshold	#HF reach threshold	# Cases	The most affected communities[1]	Response Activity / Actions Taken*	comments
AFP	1	1	1	Deir-ez-zor:Kisreh	DLOs collected the stool samples despite of the difficulty.our lab expert distributed special kits to collect stool samples.	
MEA	1	36	145	Hasakeh Ar-raqqa Idleb	Line list collected in all HFs to identify the most affected age group.	
AJS	5	8	224	Aleppo Idleb Deir-ez-zor		
FUO (typhoid fever)	5	20	622	Ar-raqqa Deir-ez-zor	we coordinate with WASH experts to response	

ABD=Acute Bloody Diarrhea AWD=Acute Watery Diarrhea AFP=Acute Flaccid Paralysis AJS=Acute Jaundice Syndrome SARI= Severe Acute Respiratory Illness
UXD=Unexplained Death FUO=Fever Of Unknown Origin MEA=suspected Measles MEN= suspected Meningitis UCE=Unexplained Cluster Of Health Events

For any queries: please do not hesitate to contact the EWARN Unit at the ewarn@acu-sy.org

Epidemiological weekly Bulletin- Syria EWARN- Epi week 18

—
s

—
k