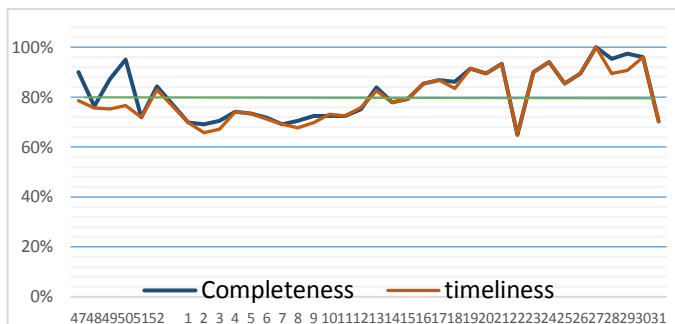


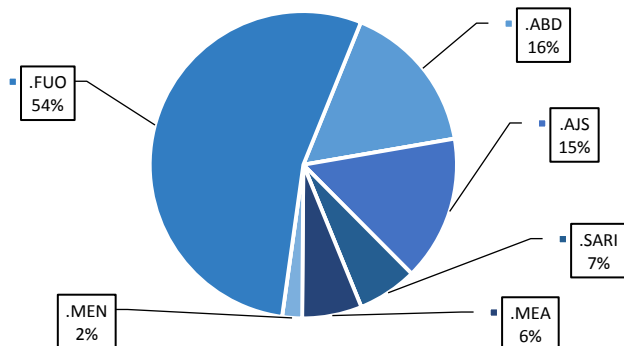
Highlights

- During Epi-week no 31, 2014; 69.7% (106/153) of the health facilities across 7 Governorates provided surveillance data 69.7% of reporting sites submitted the weekly reports on time.
- The total number of consultations reported during the reporting week was 28713 (including 40% children under the age of five) compared to 46449 consultations during week 30. The leading cause of morbidity was FUO (Fever of Unknown Origin), with over 180 cases (0.70%). **the total number of consultation and diseases decreased because of the security issues.**
- 84 measles cases reported in this week, the total number decreased, line list collected by name and age and district, started at week No 4. **Training for adverse event of measles vaccine will be held next week**
- As of week 31, 1 new AFP (Acute Flaccid Paralysis) cases reported, 40 AFP cases reported in 2014 up to date. See weekly Poliomyelitis outbreak report for more details.
- Common disease reported under others were URTI (upper respiratory tract infection), acute bronchiolitis, whooping cough, acute diarrhea, **Brucellosis and Cutaneous leishmaniasis.**

Completeness and timeliness

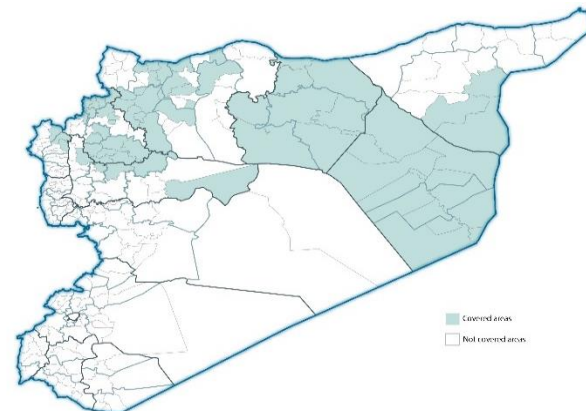


Proportion of morbidities among >5Y



EWARN coverage

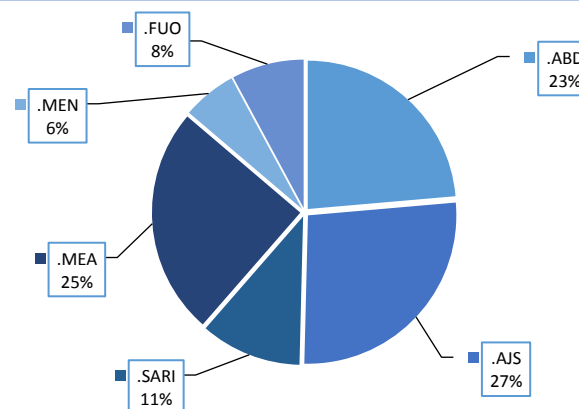
ACU EWARN covers 71/150 sub-District in 7 governorate. The total population currently under surveillance is about 7.189.528



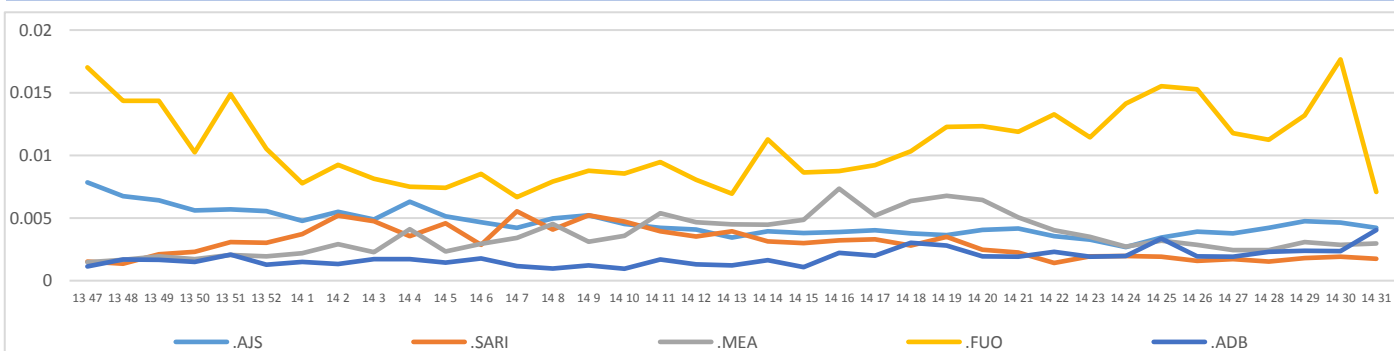
Number of sentinel sites and Total Number of Consultations per Governorate

Governorate	No of sentinels	Reporting Sentinels	No of consultations
ALEPPO	37	13	1753
AL-HASSAKA	7	6	768
AR-RAQQA	26	20	5382
DEIR-EZ-ZOR	38	38	10753
HAMA	7	6	1120
IDLEB	33	20	8494
LATTAKIA	4	3	443
Grand total	152	106	28713

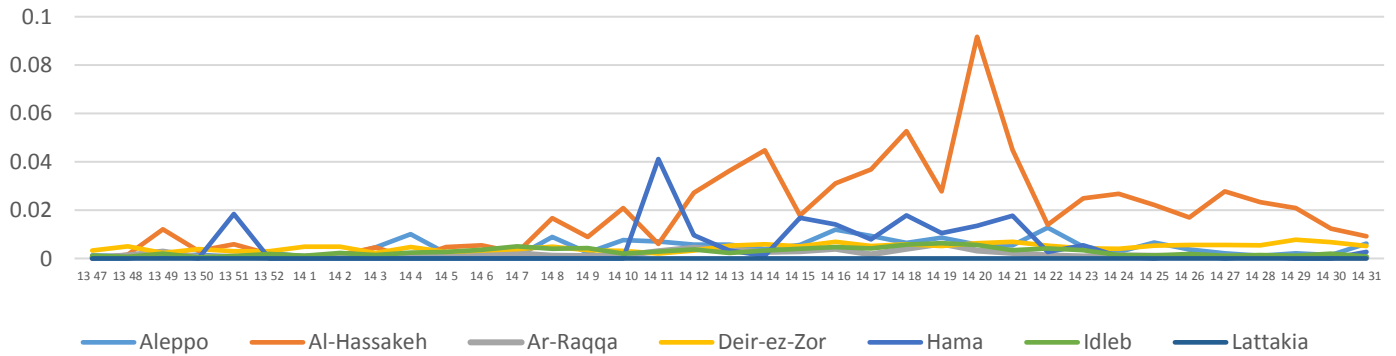
Proportion of morbidities among <5Y



Trends for Leading Priority Diseases in 7 Governorates – Epi week 47, 2013 to Epi week 31 2014



Proportional Morbidity of suspected Measles by Governorate, Epi Week 31



Number of cases (n) and propotional morbidity(%) by Epi week and leading priority Syndrom1 for governorate.Epi week 31

Governorate		week 30						week 31					
		FUO	AJS	ABD	MEA	SARI	Total*	FUO	AJS	ABD	MEA	SARI	Total*
Aleppo	NO.	22	62	14	13	13	9498	7	27	14	11	2	1753
	%	0.23%	0.65%	0.15%	0.14%	0.14%		0.40%	1.54%	0.80%	0.63%	0.11%	
Al-hassaka	NO.	7	2	12	11	7	906	10	2	25	7	8	768
	%	0.77%	0.22%	1.32%	1.21%	0.77%		1.30%	0.26%	3.26%	0.91%	1.04%	
Ar-rqqa	NO.	84	22	14	5	26	11719	55	8	12	2	7	5382
	%	0.72%	0.19%	0.12%	0.04%	0.22%		1.02%	0.15%	0.22%	0.04%	0.13%	
Deir-ez-zor	NO.	601	81	57	85	31	12227	39	58	51	54	18	10753
	%	4.92%	0.66%	0.47%	0.70%	0.25%		0.36%	0.54%	0.47%	0.50%	0.17%	
Hama	NO.	4	9	9	0	8	1008	6	7	9	3	7	1120
	%	0.40%	0.89%	0.89%	0.00%	0.79%		0.54%	0.63%	0.80%	0.27%	0.63%	
Idleb	NO.	102	32	3	19	4	9814	83	15	3	7	7	8494
	%	1.04%	0.33%	0.03%	0.19%	0.04%		0.98%	0.18%	0.04%	0.08%	0.08%	
Lattakia	NO.	0	7	0	0	0	1277	0	2	0	0	0	443
	%	0.00%	0.55%	0.00%	0.00%	0.00%		0.00%	0.45%	0.00%	0.00%	0.00%	
TOTAL	<5	194	123	64	87	47	17919	20	68	60	63	28	11254
	>5	626	92	45	46	42	28520	180	51	54	21	21	16947
Grand total	NO.	820	215	109	133	89	46449	200	119	114	84	49	28713
	%	1.77%	0.46%	0.23%	0.29%	0.19%	0.70%	0.41%	0.40%	0.29%	0.17%		

Alerts/Outbreak Investigated and Response Activity in Epi-week 31 2014

Disease	Alert threshold	#HF reach threshold	# Cases	The most affected communities[1]	Response Activity / Actions Taken*	comments
AFP	1	1	1	Deir-ez-zor	Our DLOs collected the stool samples despite of the difficulty.our lab expert distributed special kits to collect stool samples. Second AFP surveillance Training will be held next week	
MEA	1	13	84	AlRaqqa Idleb Deir-ez-zor	Line list collected in all HF's .	
AJS	5	1	119	Idleb Deir-ez-zor	Hepatitis A confirmed in some cases.in Idleb and C in Deir Ez	
FUO (typhoid fever)	5	20	180	Idleb Deir-ez-zor	we coordinate with WASH experts to response	

ABD=Acute Bloody Diarrhea AWD=Acute Watery Diarrhea AFP=Acute Flaccid Paralysis AJS=Acute Jaundice Syndrome SARI= Severe Acute Respiratory Illness
 UXD=Unexplained Death FUO=Fever Of Unknown Origin MEA=suspected Measles MEN= suspected Meningitis UCE=Unexplained Cluster Of Health Events

For any queries: please do not hesitate to contact the EWARN Unit at the ewarn@acu-sy.org

Epidemiological Weekly Bulletin- Syria EWARN- Epi week 18