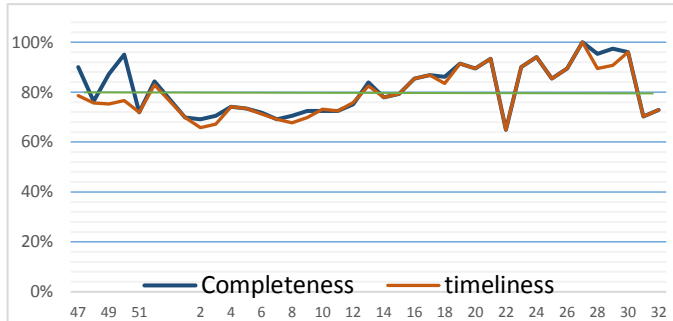


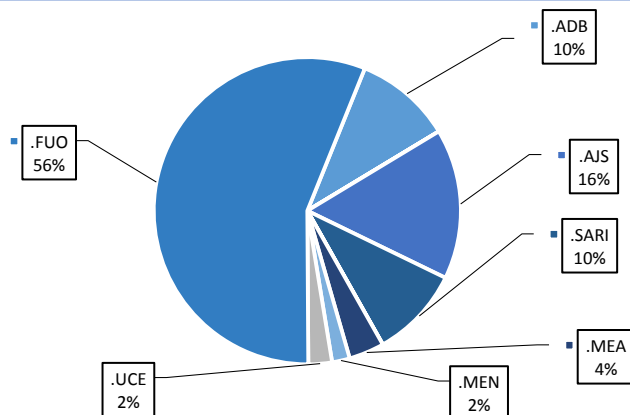
Highlights

- During Epi-week no 32, 2014; 69.9% (107/153) of the health facilities across 7 Governorates provided surveillance data 69.9% of reporting sites submitted the weekly reports on time.
- The total number of consultations reported during the reporting week was 37784 (including 40% children under the age of five) compared to 28713 consultations during week 31. The leading cause of morbidity was FUO (Fever of Unknown Origin), with over 203cases (0.55%).the total number of consultation and diseases decreased because of the security issues.
- 43 measles cases reported in this week, the total number decreased,line list collected by name and age and district,started at week No 4.Training for adverse event of measles vaccine will be held next week
- As of week 32, no new AFP (Acute Flaccid Paralysis) cases reported, 40 AFP cases reported in 2014 up to date. See weekly Poliomyelitis outbreak report for more details.
- Common disease reported under others were URTI (upper respiratory tract infection), acute bronchiolitis, whooping cough, acute diarrhea, Brucellosis and Cutaneous leishmaniasis.

Completeness and timeliness

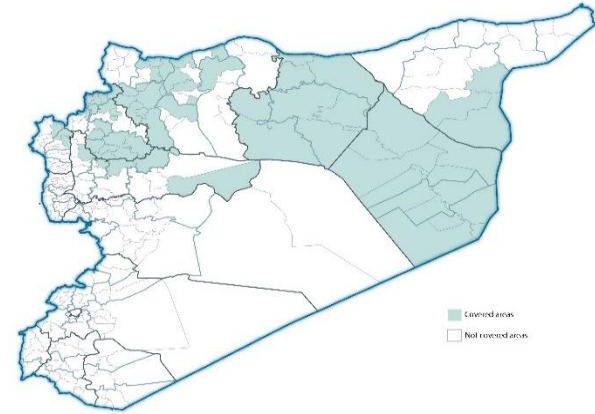


Proportion of morbidities among >5Y



EWARN coverage

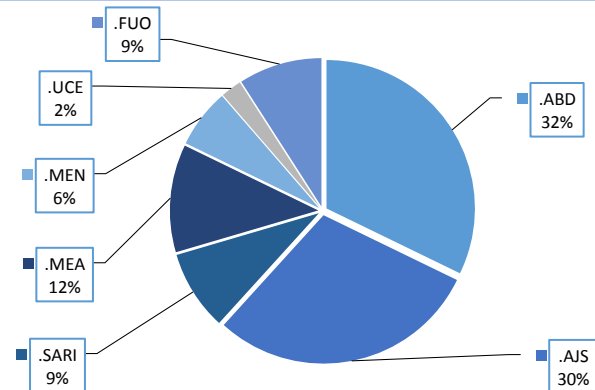
ACU EWARN covers 71/150 sub-District in 7 governorate. The total population currently under surveillance is about 7.189.528



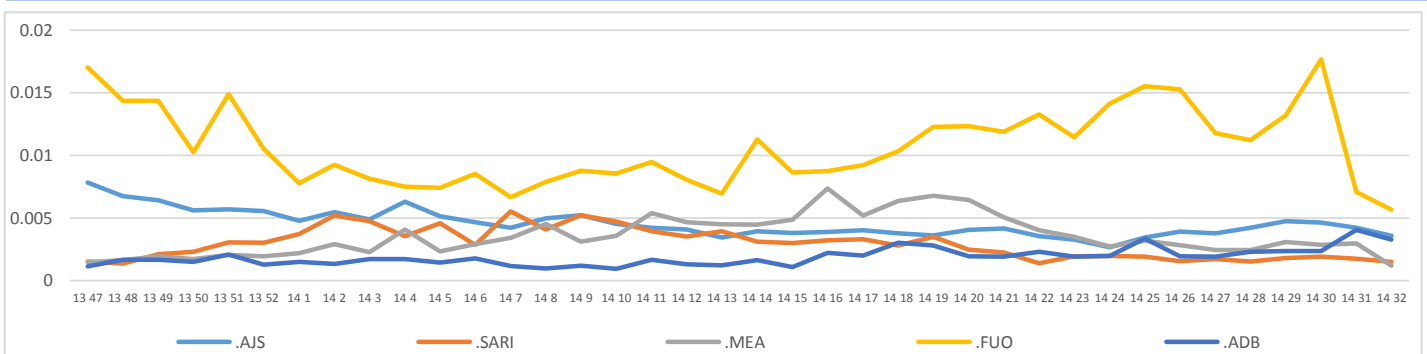
Number of sentinel sites and Total Number of Consultations per Governorate

Governorate	No of sentinels	Reporting Sentinels	No of consultations
ALEPPO	33	17	4789
AL-HASSAKA	7	6	720
AR-RAQQA	35	29	13191
DEIR-EZ-ZOR	36	30	6678
HAMA	7	0	10308
IDLEB	30	20	1117
LATTAKIA	5	5	981
Grand total	153	107	37784

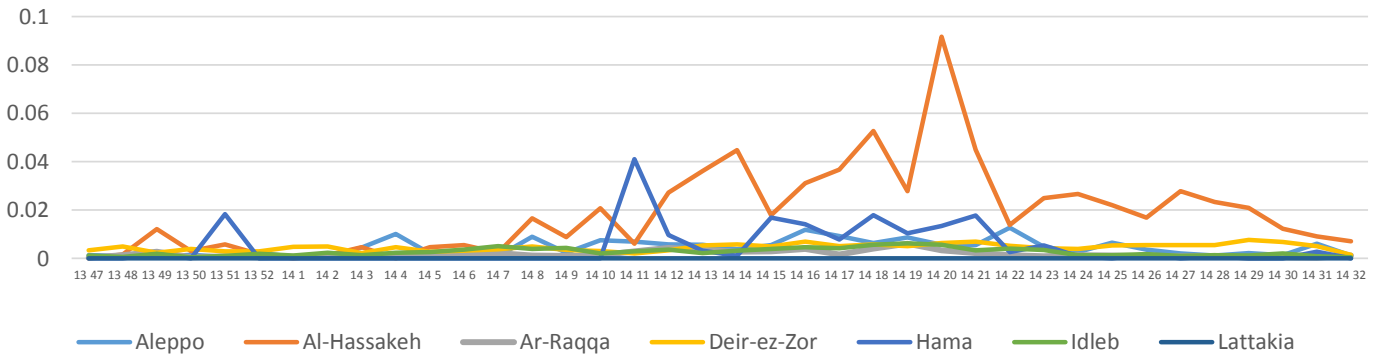
Proportion of morbidities among <5Y



Trends for Leading Priority Diseases in 7 Governorates – Epi week 47, 2013 to Epi week 32 2014



Proportional Morbidity of suspected Measles by Governorate, Epi Week 32



Number of cases (n) and propotional morbidity(%) by Epi week and leading priority SyndromI for governorate.Epi week 32

Governorate		week 31						week 32					
		FUO	AJS	ABD	MEA	SARI	Total*	FUO	AJS	ABD	MEA	SARI	Total*
Aleppo	NO.	7	27	14	11	2	1753	4	25	17	6	10	4789
	%	0.40%	1.54%	0.80%	0.63%	0.11%		0.08%	0.52%	0.35%	0.13%	0.21%	
Al-hassaka	NO.	10	2	25	7	8	768	5	0	13	5	4	720
	%	1.30%	0.26%	3.26%	0.91%	1.04%		0.69%	0.00%	1.81%	0.69%	0.56%	
Ar-rqqa	NO.	55	8	12	2	7	5382	47	17	23	16	19	13191
	%	1.02%	0.15%	0.22%	0.04%	0.13%		0.36%	0.13%	0.17%	0.12%	0.14%	
Deir-ez-zor	NO.	39	58	51	54	18	10753	22	56	64	11	15	6678
	%	0.36%	0.54%	0.47%	0.50%	0.17%		0.33%	0.84%	0.96%	0.16%	0.22%	
Hama	NO.	6	7	9	3	7	1120	0	0	0	0	0	0
	%	0.54%	0.63%	0.80%	0.27%	0.63%		0.00%	0.00%	0.00%	0.00%	0.00%	
Idleb	NO.	83	15	3	7	7	8494	125	25	1	5	6	10308
	%	0.98%	0.18%	0.04%	0.08%	0.08%		1.21%	0.24%	0.01%	0.05%	0.06%	
Lattakia	NO.	0	2	0	0	0	443	0	4	0	0	0	1117
	%	0.00%	0.45%	0.00%	0.00%	0.00%		0.00%	0.36%	0.00%	0.00%	0.00%	
TOTAL	<5	20	68	60	63	28	11254	24	78	85	31	23	13566
	>5	180	51	54	21	21		181	51	33	12	31	
Grand total	NO.	200	119	114	84	49	28713	203	127	118	43	54	36803
	%	0.70%	0.41%	0.40%	0.29%	0.17%		0.55%	0.35%	0.32%	0.12%	0.15%	

Alerts/Outbreak Investigated and Response Activity in Epi-week 32 2014

Disease	Alert threshold	#HF reach threshold	# Cases	The most affected communities[1]	Response Activity / Actions Taken*	comments
AFP	1	0	0		Our DLOs collected the stool samples despite of the difficulty.our lab expert distributed special kits to collect stool samples. Second AFP surveillance Training will be held	
MEA	1	4	43			
AJS	5	1	127			
FUO (typhoid fever)	5	34	203			

ABD=Acute Bloody Diarrhea AWD=Acute Watery Diarrhea AFP=Acute Flaccid Paralysis AJS=Acute Jaundice Syndrome SARI= Severe Acute Respiratory Illness
 UXD=Unexplained Death FUO=Fever Of Unknown Origin MEA=suspected Measles MEN= suspected Meningitis UCE=Unexplained Cluster Of Health Events

For any queries: please do not hesitate to contact the EWARN Unit at the ewarn@acu-sy.org

Epidemiological Weekly Bulletin- Syria EWARN- Epi week 18