

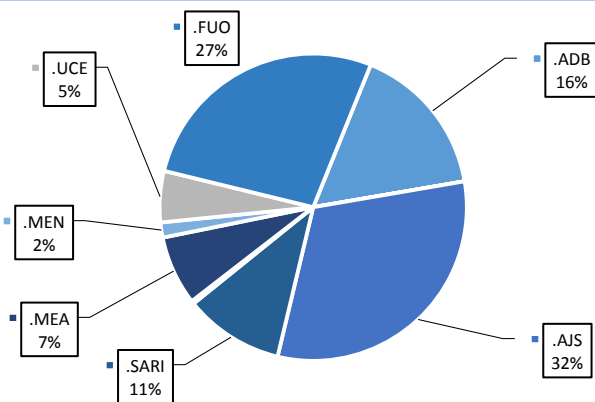
**Highlights**

- During Epi-week no 33, 2014; 82.4% (126/153) of the health facilities across 7 Governorates provided surveillance data 82.4% of reporting sites submitted the weekly reports on time.
- The total number of consultations reported during the reporting week was 42776 (including 40% children under the age of five) compared to 37784 consultations during week 32. The leading cause of morbidity was AJS (Acute jaundice syndrome), with over 176 cases (0.41%).the total number of consultation and diseases decreased because of the security issues.
- 59 measles cases reported in this week, the total number decreased,line list collected by name and age and district,started at week No 4.Training for adverse event of measles vaccine was held this week .
- As of week 33, 3 new AFP (Acute Flaccid Paralysis) cases reported, 43 AFP cases reported in 2014 up to date. See weekly Poliomyelitis outbreak report for more details.
- Common disease reported under others were URTI (upper respiratory tract infection), acute bronchiolitis, whooping cough, acute diarrhea, Brucellosis and Cutaneous leishmaniasis.

**Completeness and timeliness**

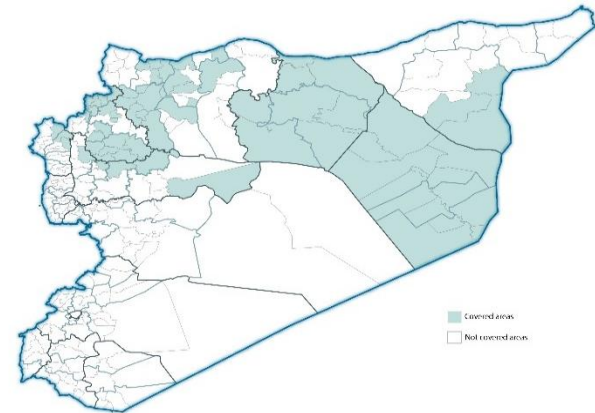


**Proportion of morbidities among >5Y**



**EWARN coverage**

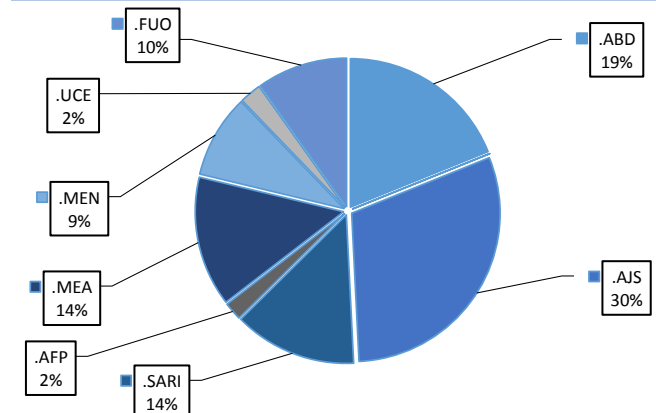
ACU EWARN covers 71/150 sub-District in 7 governorate. The total population currently under surveillance is about 7.189.528



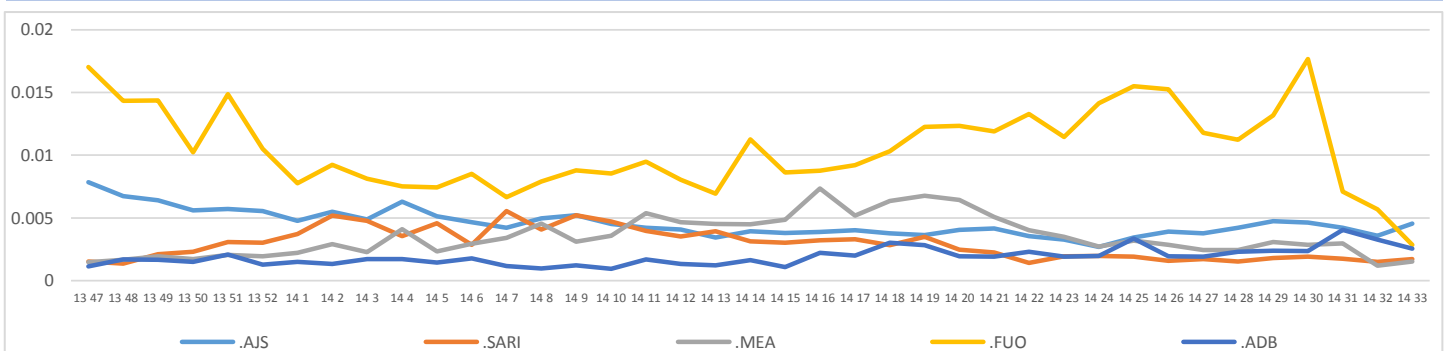
Number of sentinel sites and Total Number of Consultations per Governorate

Governorate	No of sentinel	Reporting Sentinels	No of consultations
ALEPPO	30	27	90.0%
AL-HASSAKA	7	7	100.0%
AR-RAQQA	35	34	97.1%
DEIR-EZ-ZOR	37	32	86.5%
HAMA	7	4	57.1%
IDLEB	32	18	56.3%
LATTAKIA	5	4	80.0%
<b>Grand total</b>	<b>153</b>	<b>126</b>	<b>82.4%</b>

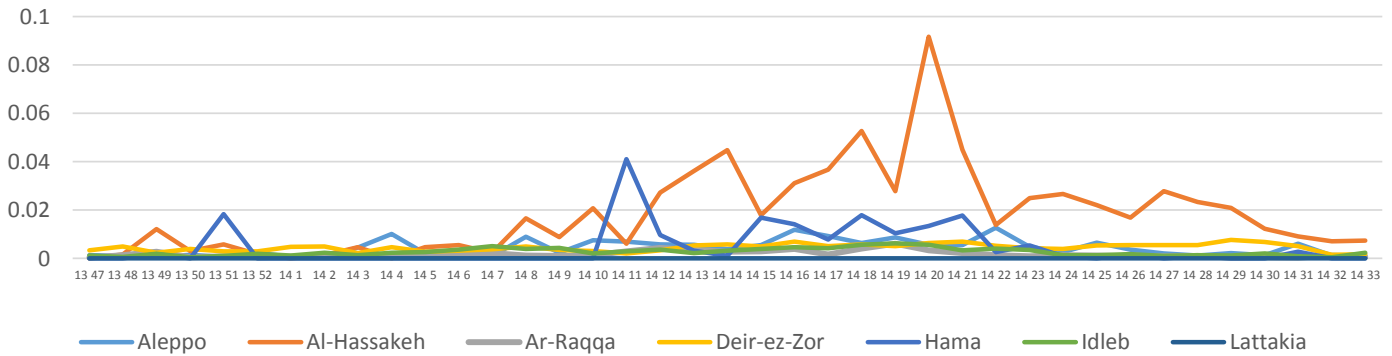
**Proportion of morbidities among <5Y**



**Trends for Leading Priority Diseases in 7 Governorates – Epi week 47, 2013 to Epi week 33 2014**



Proportional Morbidity of suspected Measles by Governorate, Epi Week 33



Number of cases (n) and propotional morbidity(%) by Epi week and leading priority SyndromI for governorate.Epi week 33

Governorate		week 32						week 33					
		FUO	AJS	ABD	MEA	SARI	Total*	FUO	AJS	ABD	MEA	SARI	Total*
Aleppo	NO.	4	25	17	6	10	4789	5	43	5	13	3	10725
	%	0.08%	0.52%	0.35%	0.13%	0.21%		0.05%	0.40%	0.05%	0.12%	0.03%	
Al-hassaka	NO.	5	0	13	5	4	720	4	0	12	7	6	946
	%	0.69%	0.00%	1.81%	0.69%	0.56%		0.42%	0.00%	1.27%	0.74%	0.63%	
Ar-rqqa	NO.	47	17	23	16	19	13191	61	25	21	7	9	10312
	%	0.36%	0.13%	0.17%	0.12%	0.14%		0.59%	0.24%	0.20%	0.07%	0.09%	
Deir-ez-zor	NO.	22	56	64	11	15	6678	36	81	55	13	25	8439
	%	0.33%	0.84%	0.96%	0.16%	0.22%		0.43%	0.96%	0.65%	0.15%	0.30%	
Hama	NO.	0	0	0	0	0	0	4	6	4	0.00%	15	#REF!
	%	0.00%	0.00%	0.00%	0.00%	0.00%		0.73%	1.10%	0.73%	0.00%	2.75%	
Idleb	NO.	125	25	1	5	6	10308	1	18	2	19	9	#REF!
	%	1.21%	0.24%	0.01%	0.05%	0.06%		0.01%	0.17%	0.02%	0.18%	0.08%	
Lattakia	NO.	0	4	0	0	0	1117	0	3	0	0	0	#REF!
	%	0.00%	0.36%	0.00%	0.00%	0.00%		0.00%	0.30%	0.00%	0.00%	0.00%	
TOTAL	<5	24	78	85	31	23	13567	25	77	48	36	34	14737
	>5	181	51	33	12	31	22563	86	99	51	23	33	24021
Grand total	NO.	203	127	118	43	54	36803	111	176	99	59	59	#REF!
	%	0.55%	0.35%	0.32%	0.12%	0.15%	0.26%	0.41%	0.23%	0.14%	0.14%		

Alerts/Outbreak Investigated and Response Activity in Epi-week 33 2014

Disease	Alert threshold	#HF reach threshold	# Cases	The most affected communities[1]	Response Activity / Actions Taken*	comments
AFP	1	3	3	Aleppo :Jebel Saman Aleppo :Azaz	Our DLOs collected the stool samples despite of the difficulty.our lab expert distributed special kits to collect stool samples.	
MEA	1	6	59			
AJS	5	6	179			
FUO (typhoid fever)	5	5	111			

ABD=Acute Bloody Diarrhea    AWD=Acute Watery Diarrhea    AFP=Acute Flaccid Paralysis    AJS=Acute Jaundice Syndrome    SARI= Severe Acute Respiratory Illness  
UXD=Unexplained Death    FUO=Fever Of Unknown Origin    MEA=suspected Measles    MEN= suspected Meningitis    UCE=Unexplained Cluster Of Health Events

For any queries: please do not hesitate to contact the EWARN Unit at the ewarn@acu-sy.org

Epidemiological Weekly Bulletin- Syria EWARN- Epi week 18

