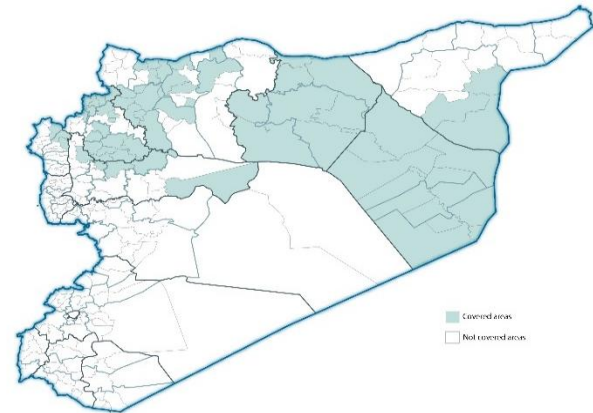


Highlights

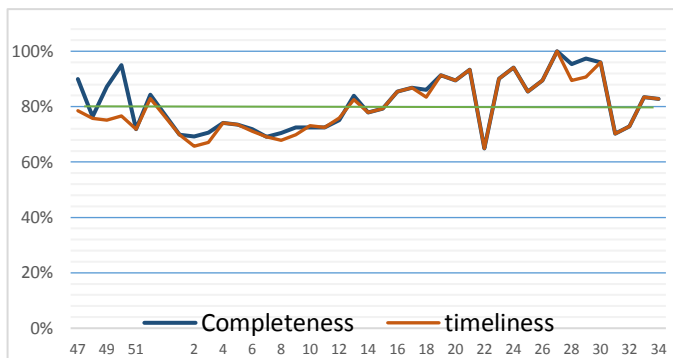
- During Epi-week no 34, 2014; 80.6% (125/155) of the health facilities across 7 Governorates provided surveillance data 80.6% of reporting sites submitted the weekly reports on time.
- The total number of consultations reported during the reporting week was 42463 (including 40% children under the age of five) compared to 42776 consultations during week 33. The leading cause of morbidity was FUIO (Fever of Unknown Origin), with over 450 cases (1.06%).
- 94 measles cases reported in this week, the total number decreased, line list collected by name and age and district, started at week No 4.
- As of week 34, 3 new AFP (Acute Flaccid Paralysis) cases reported, 46 AFP cases reported in 2014 up to date. See weekly Poliomyelitis outbreak report for more details.
- Common disease reported under others were URTI (upper respiratory tract infection), acute bronchiolitis, whooping cough, acute diarrhea, Brucellosis and Cutaneous leishmaniasis.

EWARN coverage

ACU EWARN covers 71/150 sub-District in 7 governorate. The total population currently under surveillance is about 7.189.528



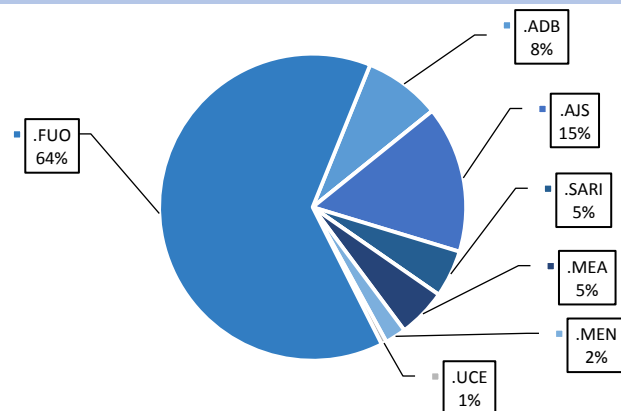
Completeness and timeliness



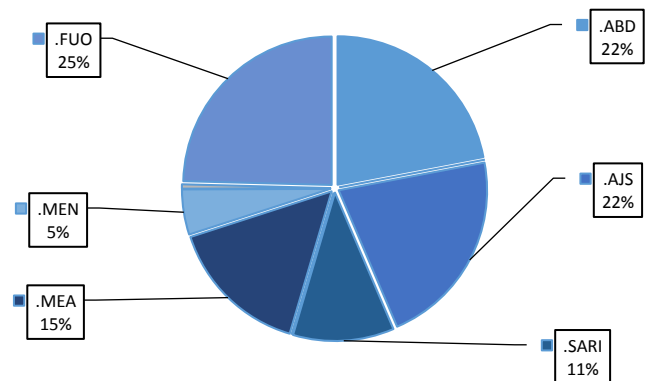
Number of sentinel sites and Total Number of Consultations per Governorate

Governorate	No of sentinel	Reporting Sentinels	No of consultations
ALEPPO	33	25	8929
AL-HASSAKA	7	7	953
AR-RAQQA	33	32	10728
DEIR-EZ-ZOR	33	32	10275
HAMA	7	6	1141
IDLEB	33	18	9073
LATTAKIA	5	2	464
DAMASCUS	4	3	900
Grand total	155	125	42463

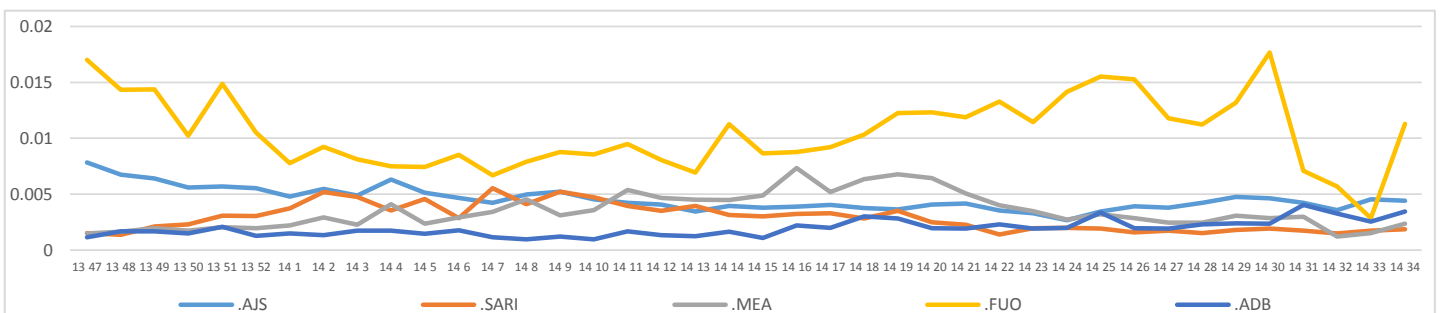
Proportion of morbidities among >5Y



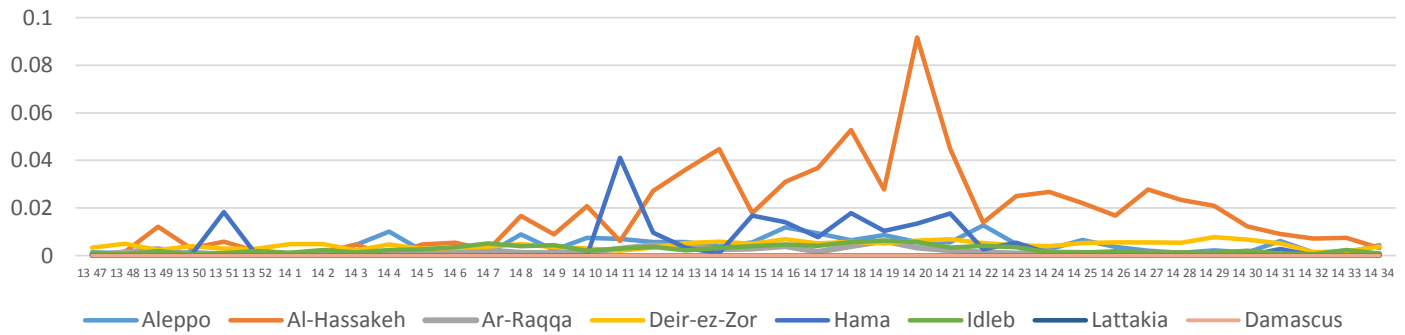
Proportion of morbidities among <5Y



Trends for Leading Priority Diseases in 7 Governorates – Epi week 47, 2013 to Epi week 34 2014



Proportional Morbidity of suspected Measles by Governorate, Epi Week 34



Number of cases (n) and propotional morbidity(%) by Epi week and leading priority SyndromI for governorate.Epi week 34

Governorate		week 33					Total*	week 34					Total*
		FUO	AJS	ABD	MEA	SARI		FUO	AJS	ABD	MEA	SARI	
Aleppo	NO.	5	43	5	13	3	10725	59	60	27	39	6	8929
	%	0.05%	0.40%	0.05%	0.12%	0.03%		0.66%	0.67%	0.30%	0.44%	0.07%	
Al-hassaka	NO.	4	0	12	7	6	946	4	10	6	3	7	953
	%	0.42%	0.00%	1.27%	0.74%	0.63%		0.42%	1.05%	0.63%	0.31%	0.73%	
Ar-rqqa	NO.	61	25	21	7	9	10312	57	7	24	6	7	10728
	%	0.59%	0.24%	0.20%	0.07%	0.09%		0.53%	0.07%	0.22%	0.06%	0.07%	
Deir-ez-zor	NO.	36	81	55	13	25	8439	210	71	71	38	20	10275
	%	0.43%	0.96%	0.65%	0.15%	0.30%		2.04%	0.69%	0.69%	0.37%	0.19%	
Hama	NO.	4	6	4	0.00%	15	545	12	8	8	0.00%	11	1141
	%	0.73%	1.10%	0.73%	0.00%	2.75%		1.05%	0.70%	0.70%	0.00%	0.96%	
Idleb	NO.	1	18	2	19	9	10822	103	17	2	8	23	9073
	%	0.01%	0.17%	0.02%	0.18%	0.08%		1.14%	0.19%	0.02%	0.09%	0.25%	
Lattakia	NO.	0	3	0	0	0	987	5	1	0	0	0	464
	%	0.00%	0.30%	0.00%	0.00%	0.00%		1.08%	0.22%	0.00%	0.00%	0.00%	
Damascus	NO.	0	0	0	0	0	0	0	2	0	0	0	900
	%	0.00%	0.00%	0.00%	0.00%	0.00%		0.00%	0.22%	0.00%	0.00%	0.00%	
TOTAL	<5	25	77	48	36	34	14737	105	92	94	66	47	15988
	>5	86	99	51	23	33	24021	345	84	44	28	27	23917
Grand total	NO.	111	176	99	59	59	42776	450	176	138	94	74	42463
	%	0.26%	0.41%	0.23%	0.14%	0.14%		1.06%	0.41%	0.32%	0.22%	0.17%	

Alerts/Outbreak Investigated and Response Activity in Epi-week 34 2014

Disease	Alert threshold	#HF reach threshold	# Cases	The most affected communities[1]	Response Activity / Actions Taken*	comments
AFP	1	3	3	Idleb Aleppo Aleppo	Our DLOs collected the stool samples despite of the difficulty.our lab expert distributed special kits to collect	
MEA	1	7	94			
AJS	5	4	176			
FUO (typhoid fever)	5	19	450			

ABD=Acute Bloody Diarrhea AWD=Acute Watery Diarrhea AFP=Acute Flaccid Paralysis AJS=Acute Jaundice Syndrome SARI= Severe Acute Respiratory Illness
 UXD=Unexplained Death FUO=Fever Of Unknown Origin MEA=suspected Measles MEN= suspected Meningitis UCE=Unexplained Cluster Of Health Events

For any queries: please do not hesitate to contact the EWARN Unit at the ewarn@acu-sy.org

Epidemiological Weekly Bulletin- Syria EWARN- Epi week 18