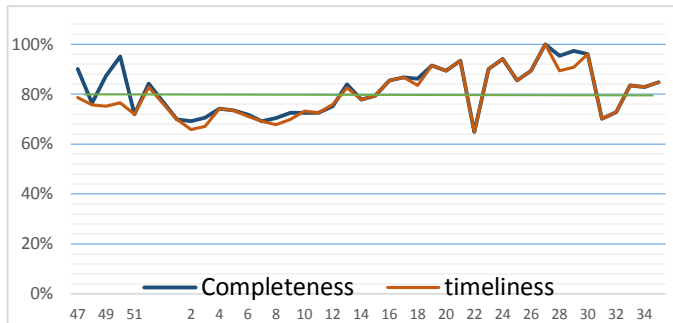


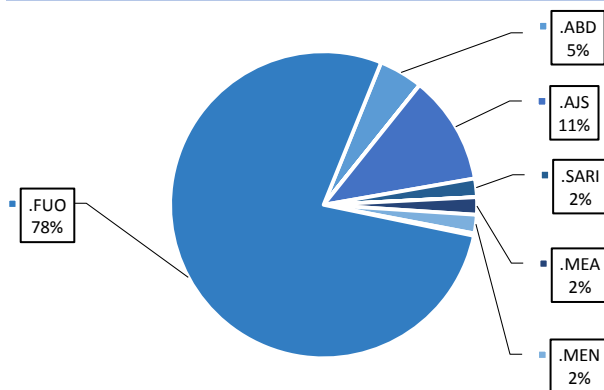
Highlights

- During Epi-week no 35, 2014; 84.2% (128/152) of the health facilities across 7 Governorates provided surveillance data 84.2% of reporting sites submitted the weekly reports on time.
- The total number of consultations reported during the reporting week was 40860 (including 40% children under the age of five) compared to 42463 consultations during week 34. The leading cause of morbidity was FVO (Fever of Unknown Origin), with over 753 cases (1.84%), the total number of consultation and diseases decreased because of the security issues.
- 66 measles cases reported in this week, the total number decreased, line list collected by name and age and district, started at week No 4.
- As of week 35, 1 new AFP (Acute Flaccid Paralysis) cases reported, 47 AFP cases reported in 2014 up to date. See weekly Poliomyelitis outbreak report for more details.
- Common disease reported under others were URTI (upper respiratory tract infection), acute bronchiolitis, whooping cough, acute diarrhea, Brucellosis and Cutaneous leishmaniasis.

Completeness and timeliness

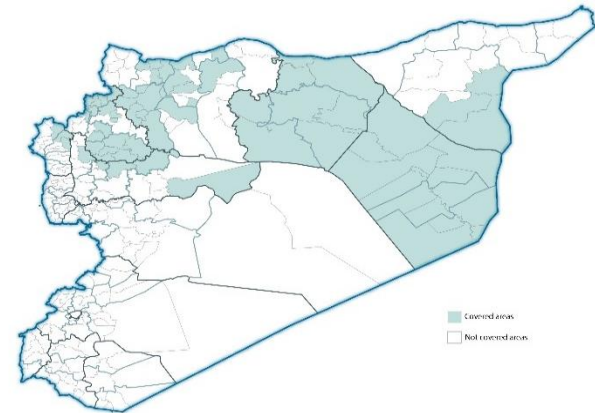


Proportion of morbidities among >5Y



EWARN coverage

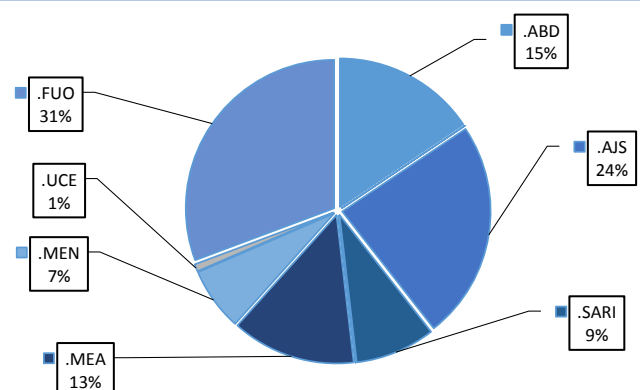
ACU EWARN covers 71/150 sub-District in 7 governorate. The total population currently under surveillance is about 7.189.528



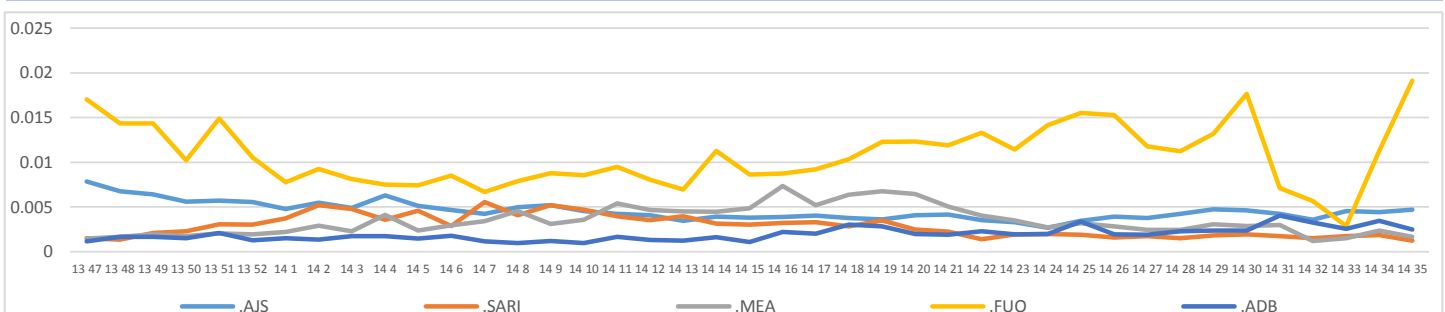
Number of sentinel sites and Total Number of Consultations per Governorate

Governorate	No of sentinel	Reporting Sentinels	No of consultations
ALEPPO	38	38	13675
AL-HASSAKA	5	4	502
AR-RAQQA	34	34	9631
DEIR-EZ-ZOR	30	26	6741
HAMA	7	5	1103
IDLEB	33	16	7435
LATTAKIA	5	5	1773
Grand total	152	128	40860

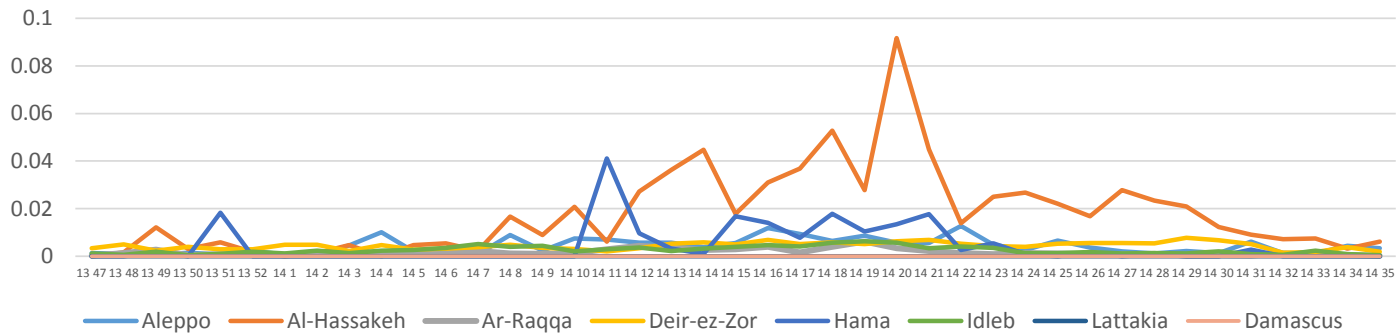
Proportion of morbidities among <5Y



Trends for Leading Priority Diseases in 7 Governorates – Epi week 47, 2013 to Epi week 35 2014



Proportional Morbidity of suspected Measles by Governorate, Epi Week 35



Number of cases (n) and propotional morbidity(%) by Epi week and leading priority SyndromI for governorate.Epi week 35

Governorate		week 34						week 35					
		FUO	AJS	ABD	MEA	SARI	Total*	FUO	AJS	ABD	MEA	SARI	Total*
Aleppo	NO.	59	60	27	39	6	8929	92	75	32	45	6	13675
	%	0.66%	0.67%	0.30%	0.44%	0.07%		0.67%	0.55%	0.23%	0.33%	0.04%	
Al-hassaka	NO.	4	10	6	3	7	953	0	5	3	3	4	502
	%	0.42%	1.05%	0.63%	0.31%	0.73%		0.00%	1.00%	0.60%	0.60%	0.80%	
Ar-rqqa	NO.	57	7	24	6	7	10728	91	16	24	2	4	9631
	%	0.53%	0.07%	0.22%	0.06%	0.07%		0.94%	0.17%	0.25%	0.02%	0.04%	
Deir-ez-zor	NO.	210	71	71	38	20	10275	230	60	24	13	13	6741
	%	2.04%	0.69%	0.69%	0.37%	0.19%		3.41%	0.89%	0.36%	0.19%	0.19%	
Hama	NO.	12	8	8	0	11	1141	13	10	9	0	10	#REF!
	%	1.05%	0.70%	0.70%	0.00%	0.96%		1.18%	0.91%	0.82%	0.00%	0.91%	
Idleb	NO.	103	17	2	8	23	9073	314	17	5	3	12	#REF!
	%	1.14%	0.19%	0.02%	0.09%	0.25%		4.22%	0.23%	0.07%	0.04%	0.16%	
Lattakia	NO.	5	1	0	0	0	464	13	1	0	0	0	#REF!
	%	1.08%	0.22%	0.00%	0.00%	0.00%		0.73%	0.06%	0.00%	0.00%	0.00%	
TOTAL	<5	105	92	94	66	47	15988	116	90	59	51	33	15668
	>5	345	84	44	28	27	23917	637	94	38	15	16	23667
Grand total	NO.	450	176	138	94	74	42463	753	184	97	66	66	#REF!
	%	1.06%	0.41%	0.32%	0.22%	0.17%	1.84%	0.45%	0.24%	0.16%	0.16%		

Alerts/Outbreak Investigated and Response Activity in Epi-week 35 2014

Disease	Alert threshold	#HF reach threshold	# Cases	The most affected communities[1]	Response Activity / Actions Taken*	comments
AFP	1	1	1	Aleppo	Our DLOs collected the stool samples despite of the difficulty.our lab expert distributed special kits to collect	
FUO (typhoid fever)	5	19	753			
MEA	1	8	66			
AJS	5	6	184			

ABD=Acute Bloody Diarrhea AWD=Acute Watery Diarrhea AFP=Acute Flaccid Paralysis AJS=Acute Jaundice Syndrome SARI= Severe Acute Respiratory Illness
 UXD=Unexplained Death FUO=Fever Of Unknown Origin MEA=suspected Measles MEN= suspected Meningitis UCE=Unexplained Cluster Of Health Events

For any queries: please do not hesitate to contact the EWARN Unit at the ewarn@acu-sy.org

—
s

—
k