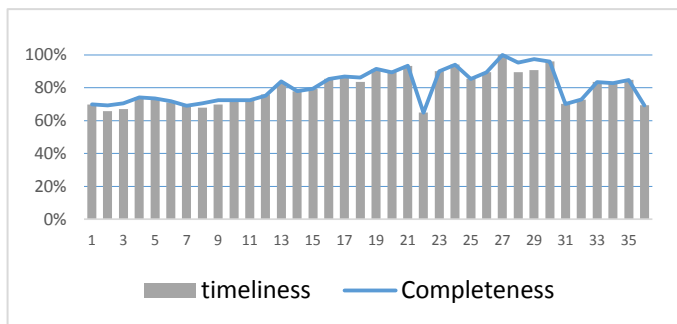


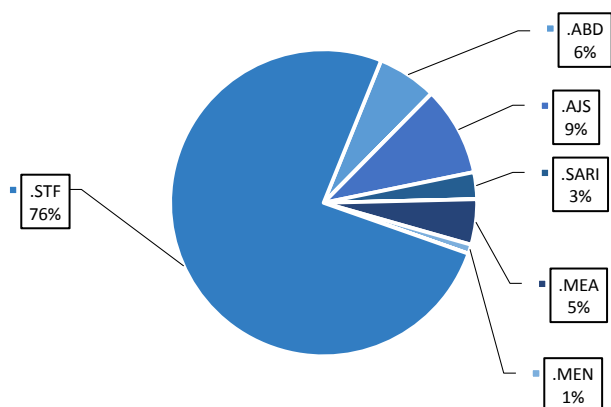
Highlights

- A new level of EWARN team has been trained (field level officers) FLOs, the program has been expanded, and we add new health centers, and new areas. the target is cover more than 250 health center.
- During Epi-week no 36 2014; 69.4% (172/248) of the health facilities across 7 Governorates provided surveillance data 69.4% of reporting sites submitted the weekly reports on time.
- The total number of consultations reported during the reporting week was 55733 (including 40% children under the age of five) compared to 40860 consultations during week 35. The leading cause of morbidity was STF (Suspected typhoid fever), with over 1033 cases (1.85%).
- 146 measles cases reported in this week, line list collected by name and age and district, started at week No 4. Reports about the AEFI is sent daily to the central level coordinators by EWARN team (DLOs-FLOs)
- As of week 36, 2 new AFP (Acute Flaccid Paralysis) cases reported, 49 AFP cases reported in 2014 up to date. See weekly Poliomyelitis outbreak report for more details.
- Common disease reported under others were URTI (upper respiratory tract infection), acute bronchiolitis, whooping cough, acute diarrhea, Brucellosis and Cutaneous leishmaniasis.

Completeness and timeliness

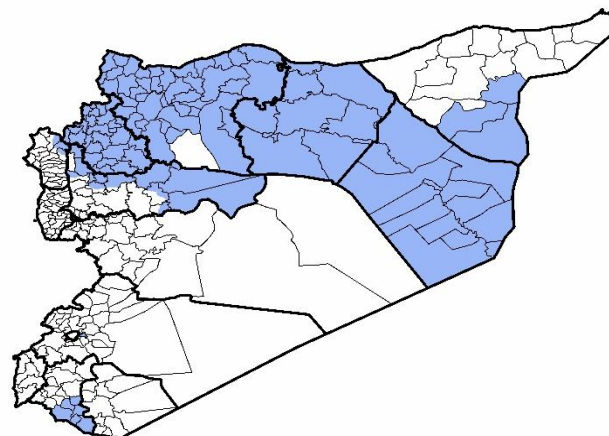


Proportion of morbidities among >5Y



EWARN coverage

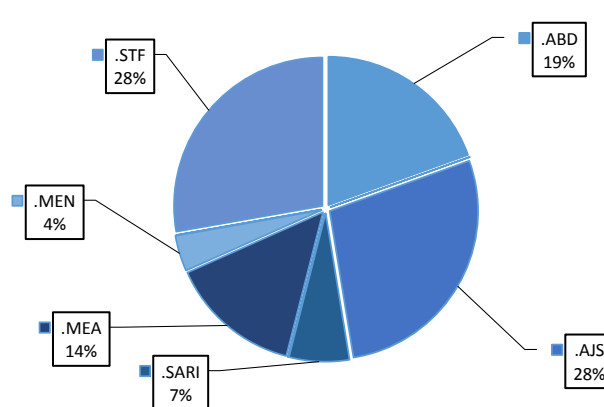
ACU EWARN covers 71/150 sub-District in 7 governorate. The total population currently under surveillance is about 7.189.528



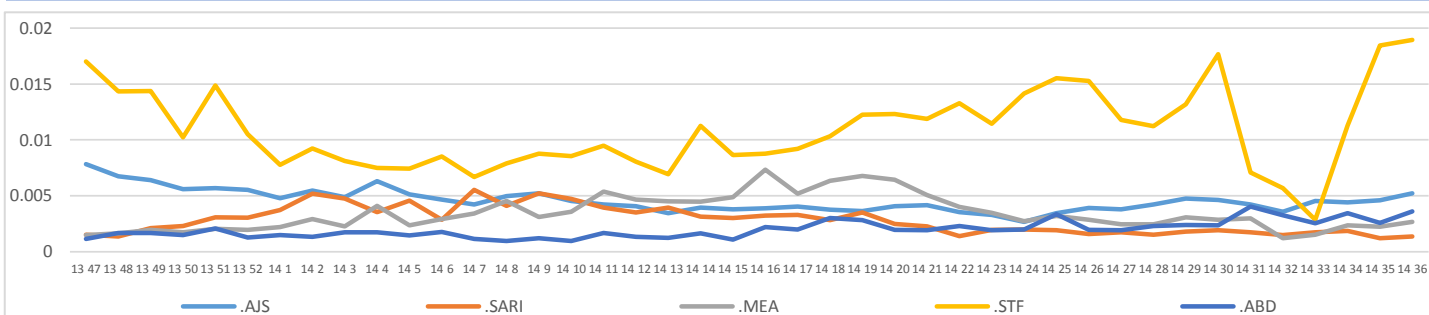
Number of sentinel sites and Total Number of Consultations per Governorate

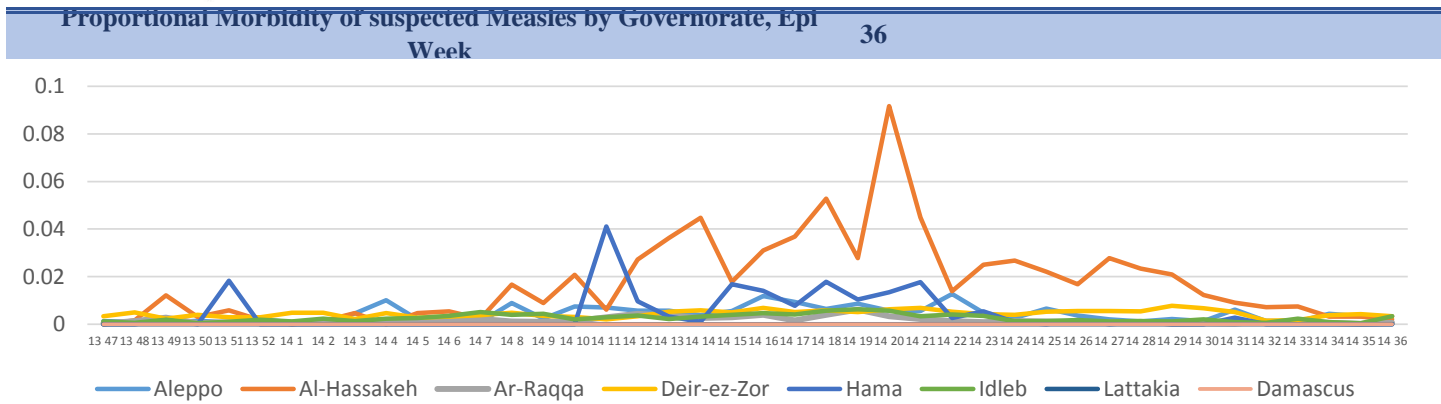
Governorate	No of sentinels	Reporting Sentinels	No of consultations
ALEPPO	75	38	13063
AL-HASSAKA	11	11	1465
AR-RAQQA	53	36	10034
DEIR-EZ-ZOR	55	35	10589
HAMA	9	6	1408
IDLEB	39	43	17812
LATTAKIA	6	3	1362
Grand total	248	172	55733

Proportion of morbidities among <5Y



Trends for Leading Priority Diseases in 7 Governorates – Epi week 47, 2013 to Epi week 36 2014





Number of cases (n) and propotional morbidity(%) by Epi week and leading priority SyndromI for governorate.Epi week 36

Governorate		week 35						week 36					
		STF	AJS	ABD	MEA	SARI	Total*	STF	AJS	ABD	MEA	SARI	Total*
Aleppo	NO.	92	75	32	45	6	13675	63	60	47	43	6	13063
	%	0.67%	0.55%	0.23%	0.33%	0.04%		0.48%	0.46%	0.36%	0.33%	0.05%	
Al-hassaka	NO.	0	5	3	3	4	502	2	8	9	3	6	1465
	%	0.00%	1.00%	0.60%	0.60%	0.80%		0.14%	0.55%	0.61%	0.20%	0.41%	
Ar-rqqa	NO.	91	16	24	2	4	9631	85	27	42	7	3	10034
	%	0.94%	0.17%	0.25%	0.02%	0.04%		0.85%	0.27%	0.42%	0.07%	0.03%	
Deir-ez-zor	NO.	230	60	24	13	13	6741	301	93	61	36	21	10589
	%	3.41%	0.89%	0.36%	0.19%	0.19%		2.84%	0.88%	0.58%	0.34%	0.20%	
Hama	NO.	13	10	9	0.00%	10	1103	23	16	21	0.00%	17	1408
	%	1.18%	0.91%	0.82%	0.00%	0.91%		1.63%	1.14%	1.49%	0.00%	1.21%	
Idleb	NO.	314	17	5	3	12	7435	542	81	16	57	21	17812
	%	4.22%	0.23%	0.07%	0.04%	0.16%		3.04%	0.45%	0.09%	0.32%	0.12%	
Lattakia	NO.	13	1	0	0	0	1773	17	0	0	0	0	1362
	%	0.73%	0.06%	0.00%	0.00%	0.00%		1.25%	0.00%	0.00%	0.00%	0.00%	
TOTAL	<5	116	90	59	51	33	15668	178	179	125	92	42	22788
	>5	637	94	38	15	16	23667	855	106	71	54	32	31763
Grand total	NO.	753	184	97	66	66	40860	1033	285	196	146	146	55733
	%	1.84%	0.45%	0.24%	0.16%	0.16%		1.85%	0.51%	0.35%	0.26%	0.26%	

Alerts/Outbreak Investigated and Response Activity in Epi-week 36 2014

Disease	Alert threshold	#HF reach threshold	# Cases	The most affected communities[1]	Response Activity / Actions Taken*	comments
AFP	1	2	2	Deir-ez-zor Aleppo	Our DLOs collected the stool samples despite of the difficulty.	
MEA	1	36	146			
AJS	5	9	285			
STF (typhoid fever)	5	47	1033			

ABD=Acute Bloody Diarrhea AWD=Acute Watery Diarrhea AFP=Acute Flaccid Paralysis AJS=Acute Jaundice Syndrome SARI= Severe Acute Respiratory Illness
 UXD=Unexplained Death FUO=Fever Of Unknown Origin MEA=suspected Measles MEN= suspected Meningitis UCE=Unexplained Cluster Of Health Events

For any queries: please do not hesitate to contact the EWARN Unit at the ewarn@acu-sy.org

—
s

—
k