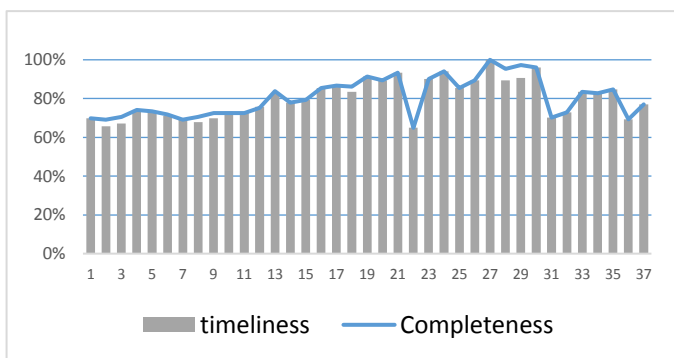


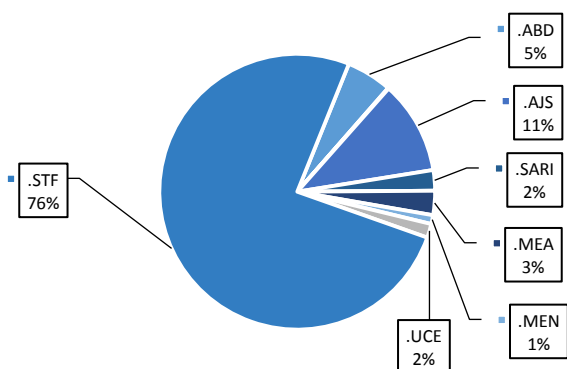
Highlights

- A new level of EWARN team has been trained (field level officers) FLOs, the program has been expanded, and we add new health centers, and new areas. the target is cover more than 250 health center.
- During Epi-week no 37 2014; 76.1% (191/251) of the health facilities across 9 Governorates provided surveillance data 76.1% of reporting sites submitted the weekly reports on time.
- The total number of consultations reported during the reporting week was 62562 (including 40% children under the age of five) compared to 55733 consultations during week 36. The leading cause of morbidity was STF (Suspected typhoid fever), with over 1100 cases (1.76%).
- 127 measles cases reported in this week, line list collected by name and age and district, started at week No 4. Reports about the AEFI is sent daily to the central level coordinators by EWARN team (DLOs-FLOs)
- As of week 37, no new AFP (Acute Flaccid Paralysis) cases reported, 49 AFP cases reported in 2014 up to date. See weekly Poliomyelitis outbreak report for more details.
- Common disease reported under others were URTI (upper respiratory tract infection), acute bronchiolitis, whooping cough, acute diarrhea, Brucellosis and Cutaneous leishmaniasis.

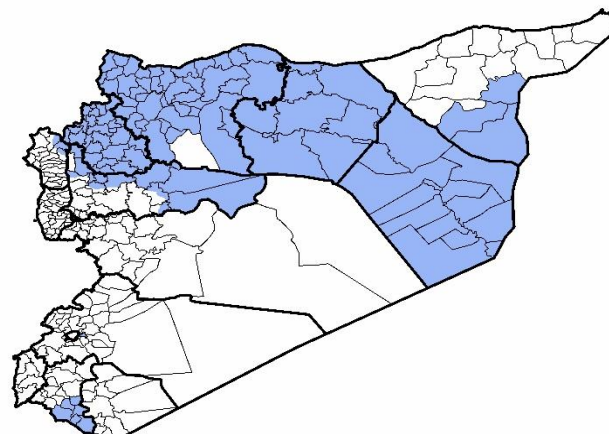
Completeness and timeliness



Proportion of morbidities among >5Y



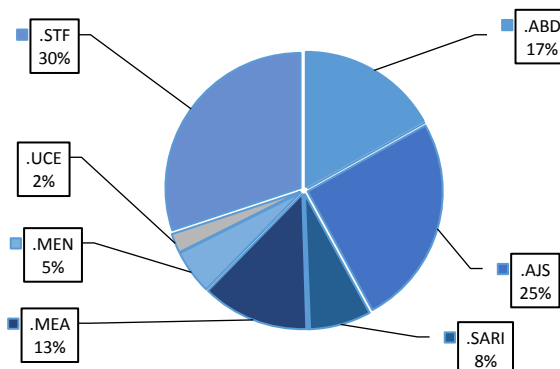
EWARN coverage



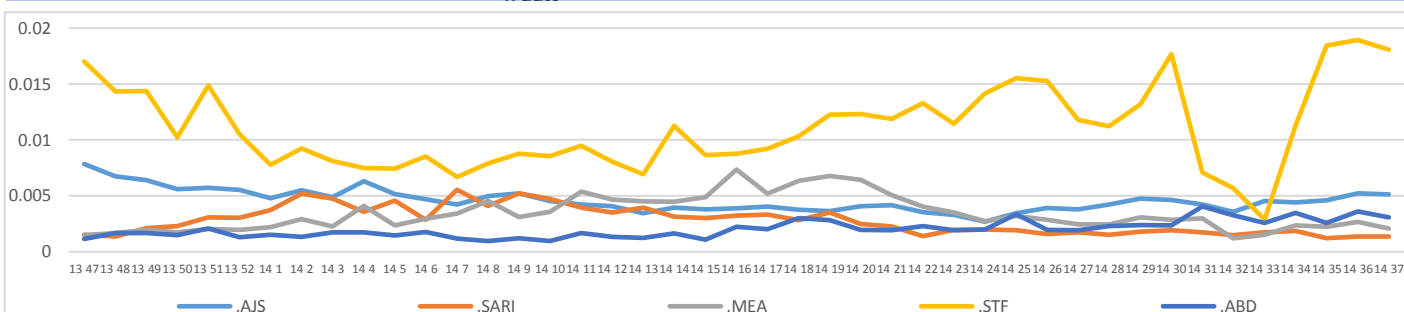
Number of sentinel sites and Total Number of Consultations per Governorate

Governorate	No of sentinel sites	Reporting Sentinel sites	%	No of consultations
ALEPPO	75	45	60.0%	15430
AL-HASSAKA	11	14	127.3%	1962
AR-RAQQA	53	37	69.8%	9561
DEIR-EZ-ZOR	55	42	76.4%	14122
HAMA	9	3	33.3%	921
IDLEB	39	43	110.3%	17740
DAMASCUS	3	3	100.0%	1070
LATTAKIA	6	4	66.7%	1756
Grand total	251	191	76.1%	62562

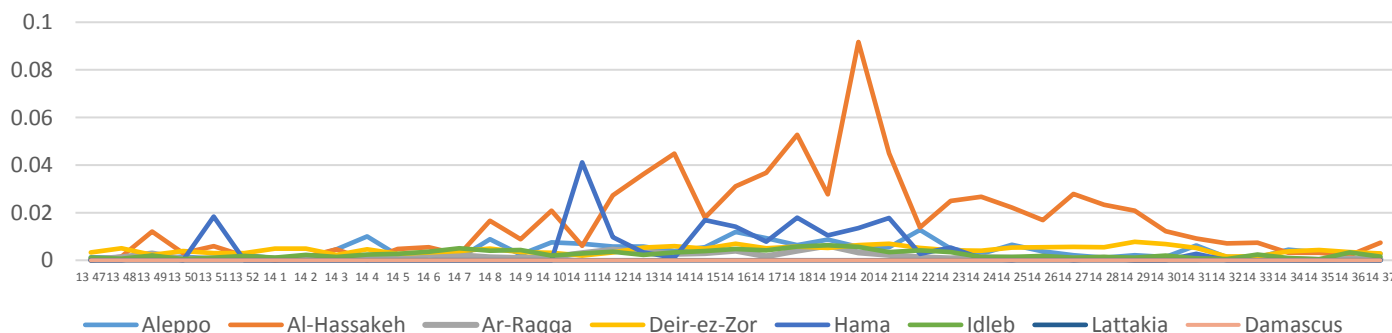
Proportion of morbidities among <5Y



Trends for Leading Priority Diseases in 7 Governorates – Epi week 47, 2013 to Epi week 37 2014



Proportional Morbidity of suspected Measles by Governorate, Epi Week 37



Number of cases (n) and propotional morbidity(%) by Epi week and leading priority SyndromI for governorate.Epi week 37

Governorate		week 36						week 37					
		STF	AJS	ABD	MEA	SARI	Total*	STF	AJS	ABD	MEA	SARI	Total*
Aleppo	NO.	63	60	47	43	6	13063	99	72	36	42	8	15430
	%	0.48%	0.46%	0.36%	0.33%	0.05%		0.64%	0.47%	0.23%	0.27%	0.05%	
Al-hassaka	NO.	2	8	9	3	6	1465	0	13	8	14	3	1962
	%	0.14%	0.55%	0.61%	0.20%	0.41%		0.00%	0.66%	0.41%	0.71%	0.15%	
Ar-rqqa	NO.	85	27	42	7	3	10034	108	19	39	4	0	9561
	%	0.85%	0.27%	0.42%	0.07%	0.03%		1.13%	0.20%	0.41%	0.04%	0.00%	
Deir-ez-zor	NO.	301	93	61	36	21	10589	366	134	84	41	45	14122
	%	2.84%	0.88%	0.58%	0.34%	0.20%		2.59%	0.95%	0.59%	0.29%	0.32%	
Hama	NO.	23	16	21	0.00%	17	1408	11	9	12	0.00%	12	921
	%	1.63%	1.14%	1.49%	0.00%	1.21%		1.19%	0.98%	1.30%	0.00%	1.30%	
Idleb	NO.	542	81	16	57	21	17812	466	56	7	26	14	17740
	%	3.04%	0.45%	0.09%	0.32%	0.12%		2.63%	0.32%	0.04%	0.15%	0.08%	
Damascus	NO.	0	0	0	0	0	0	38	9	0	0	0	1070
	%	0.00%	0.00%	0.00%	0.00%	0.00%		3.55%	0.84%	0.00%	0.00%	0.00%	
Lattakia	NO.	17	0	0	0	0	1362	12	0	0	0	0	1756
	%	1.25%	0.00%	0.00%	0.00%	0.00%		0.68%	0.00%	0.00%	0.00%	0.00%	
TOTAL	<5	178	179	125	92	42	22788	221	185	124	94	54	25632
	>5	855	106	71	54	32		879	127	62	33	28	
Grand total	NO.	1033	285	196	146	146	55733	1100	312	186	127	127	62562
	%	1.85%	0.51%	0.35%	0.26%	0.26%		1.76%	0.50%	0.30%	0.20%	0.20%	

Alerts/Outbreak Investigated and Response Activity in Epi-week 37 2014

Disease	Alert threshold	#HF reach threshold	# Cases	The most affected communities[1]	Response Activity / Actions Taken*	comments
AFP	1	0	0			
MEA	1	44	127	Hama		
				Ar-raqqa		
				Idleb		
				Aleppo		
AJS	5	5	312	Aleppo		
				Lattakea		
STF (typhoid fever)	5	27	1100	Ar-raqqa	we coordinate with WASH experts to response	
				Deir-ez-zor:Sbkan		
				Idleb		

ABD=Acute Bloody Diarrhea AWD=Acute Watery Diarrhea AFP=Acute Flaccid Paralysis AJS=Acute Jaundice Syndrome SARI= Severe Acute Respiratory Illness
 UXD=Unexplained Death FOU=Fever Of Unknown Origin MEA=suspected Measles MEN= suspected Meningitis UCE=Unexplained Cluster Of Health Events

For any queries: please do not hesitate to contact the EWARN Unit at the ewarn@acu-sy.org

Epidemiological Weekly Bulletin- Syria EWARN- Epi week 18