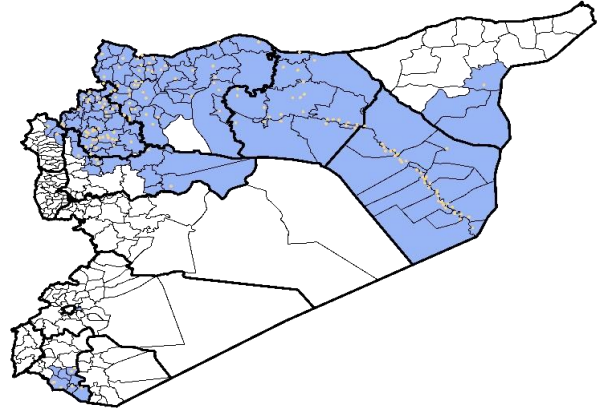


Highlights

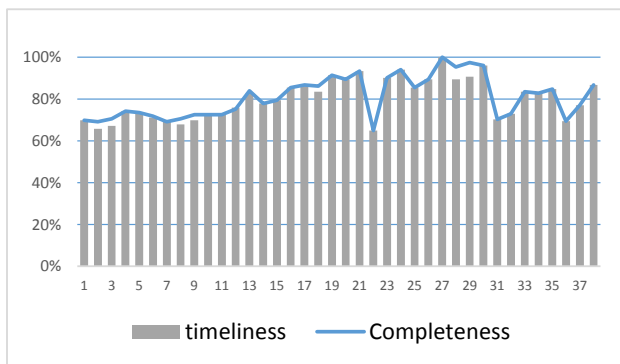
- A new level of EWARN team has been trained (field level officers) FLOs, the program has been expanded, and we add new health centers, and new areas .the target is cover more than 250 health center. •During Epi-week no 38, 2014.;80.7% (223/264) of the health facilities across 7 Governorates provided surveillance data 80.7% of reporting sites submitted the weekly reports on time.
- The total number of consultations reported during the reporting week was 67955 (including 40% children under the age of five) compared to 62562 consultations during week 37. The leading cause of morbidity was STF (Suspected typhoid fever), with over 1238 cases (1.82%).
- 100 measles cases reported in this week.
- Reports about the AEFI is sent daily to the central level coordinators by EWARN team (DLOs-FLOs)
- As of week 38, 2 new AFP (Acute Flaccid Paralysis) cases reported, 51 AFP cases reported in 2014 up to date. See weekly Poliomyelitis outbreak report for more details.
- Common disease reported under others were URTI (upper respiratory tract infection), acute bronchiolitis, whooping cough, acute diarrhea, Brucellosis and Cutaneous leishmaniasis.

EWARN coverage

ACU EWARN covers 110 sub-District in 9 governorate



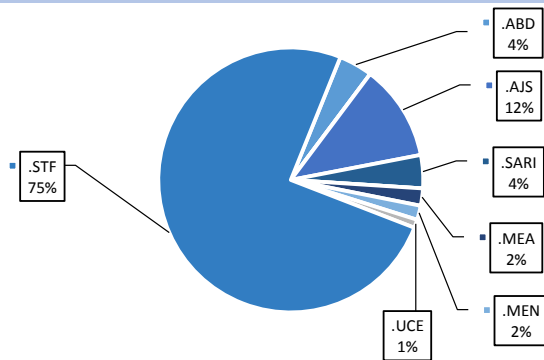
Completeness and timeliness



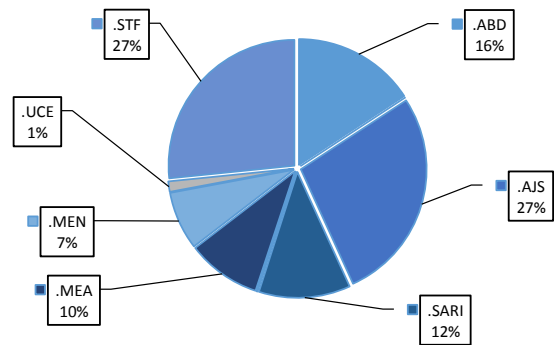
Number of sentinel sites and Total Number of Consultations per Governorate

Governorate	No of sentinels	Reporting Sentinels	No of consultations
ALEPPO	62	56	16864
AL-HASSAKA	15	14	1930
AR-RAQQA	53	45	11401
DEIR-EZ-ZOR	55	50	17588
HAMA	9	5	1616
IDLEB	49	29	12649
R.DAMASCUS	8	3	1190
DARAA	7	6	2110
LATTAKIA	6	5	2607
<b>Grand total</b>	<b>264</b>	<b>213</b>	<b>67955</b>

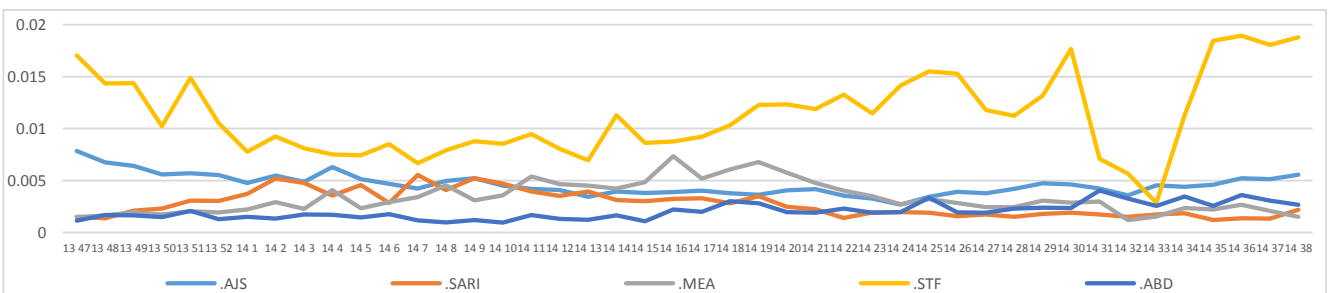
Proportion of morbidities among >5Y



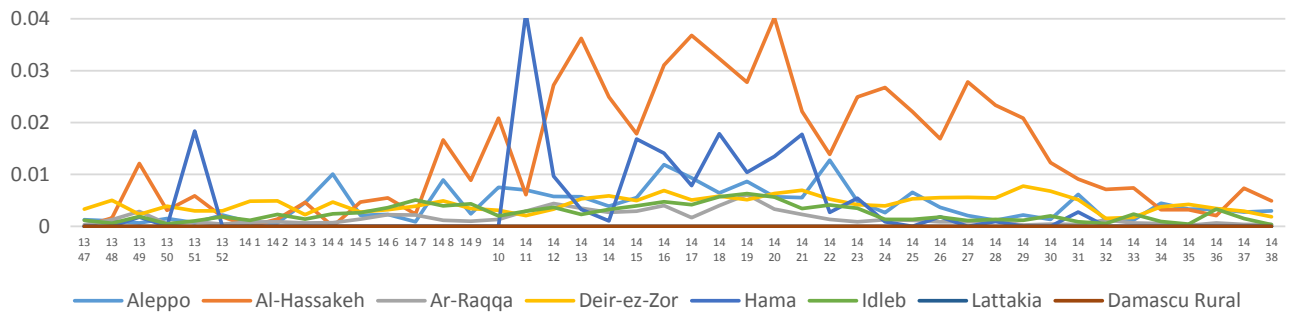
Proportion of morbidities among <5Y



Trends for Leading Priority Diseases in 7 Governorates – Epi week 47, 2013 to Epi week 38 2014



Proportional Morbidity of suspected Measles by Governorate, Epi Week 38



Number of cases (n) and propotional morbidity(%) by Epi week and leading priority SyndromeI for governorate.Epi week 38

Governorate		week 37					Total*	week 38					Total*
		STF	AJS	ABD	MEA	SARI		STF	AJS	ABD	MEA	SARI	
Aleppo	NO.	99	72	36	42	8	15430	110	97	46	50	13	16864
	%	0.64%	0.47%	0.23%	0.27%	0.05%		0.65%	0.58%	0.27%	0.30%	0.08%	
Al-hassaka	NO.	0	13	8	14	3	1962	2	13	7	9	5	1930
	%	0.00%	0.66%	0.41%	0.71%	0.15%		0.10%	0.67%	0.36%	0.47%	0.26%	
Ar-rqqa	NO.	108	19	39	4	0	9561	92	20	31	5	5	11401
	%	1.13%	0.20%	0.41%	0.04%	0.00%		0.81%	0.18%	0.27%	0.04%	0.04%	
Deir-ez-zor	NO.	366	134	84	41	45	14122	481	197	61	32	62	17588
	%	2.59%	0.95%	0.59%	0.29%	0.32%		2.73%	1.12%	0.35%	0.18%	0.35%	
Hama	NO.	11	9	12	0.00%	12	921	7	8	9	0.00%	8	1616
	%	1.19%	0.98%	1.30%	0.00%	1.30%		0.43%	0.50%	0.56%	0.00%	0.50%	
Idleb	NO.	466	56	7	26	14	17740	492	18	4	4	15	12649
	%	2.63%	0.32%	0.04%	0.15%	0.08%		3.89%	0.14%	0.03%	0.03%	0.12%	
Damascus Rural	NO.	38	9	0	0	0	1070	35	9	0	0	0	1190
	%	3.55%	0.84%	0.00%	0.00%	0.00%		2.94%	0.76%	0.00%	0.00%	0.00%	
Daraa	NO.	0	0	0	0	0	0	7	2	17	0	36	2110
	%	0.00%	0.00%	0.00%	0.00%	0.00%		0.33%	0.09%	0.81%	0.00%	1.71%	
Lattakia	NO.	12	0	0	0	0	1756	12	3	0	0	0	2607
	%	0.68%	0.00%	0.00%	0.00%	0.00%		0.46%	0.12%	0.00%	0.00%	0.00%	
TOTAL	<5	221	185	124	94	54	25632	199	205	118	71	88	27269
	>5	879	127	62	33	28	35270	1039	162	57	29	56	38620
Grand total	NO.	1100	312	186	127	127	62562	1238	367	175	100	100	67955
	%	1.76%	0.50%	0.30%	0.20%	0.20%		1.82%	0.54%	0.26%	0.15%	0.15%	

Alerts/Outbreak Investigated and Response Activity in Epi-week 38 2014

Disease	Alert threshold	#HF reach threshold	# Cases	The most affected communities[1]	Response Activity / Actions Taken*	comments
AFP	1	2	2	Hama Alhasakeh		
MEA	1	28	100			
AJS	5	34	367			
STF (typhoid fever)	5	45	1238			

ABD=Acute Bloody Diarrhea AWD=Acute Watery Diarrhea AFP=Acute Flaccid Paralysis AJS=Acute Jaundice Syndrome SARI= Severe Acute Respiratory Illness  
 UXD=Unexplained Death FUU=Fever Of Unknown Origin MEA=suspected Measles MEN= suspected Meningitis UCE=Unexplained Cluster Of Health Events

For any queries: please do not hesitate to contact the EWARN Unit at the [ewarn@acu-sy.org](mailto:ewarn@acu-sy.org)



—  
s

—  
k