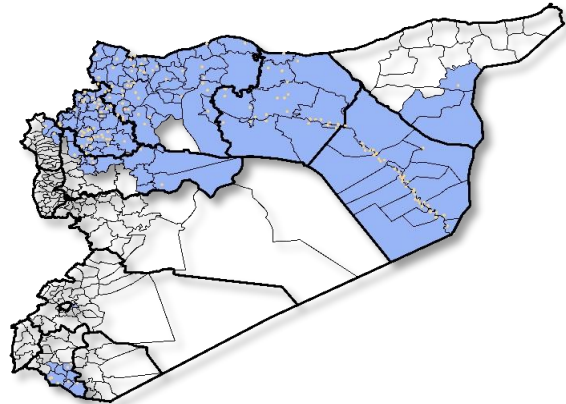


Highlights

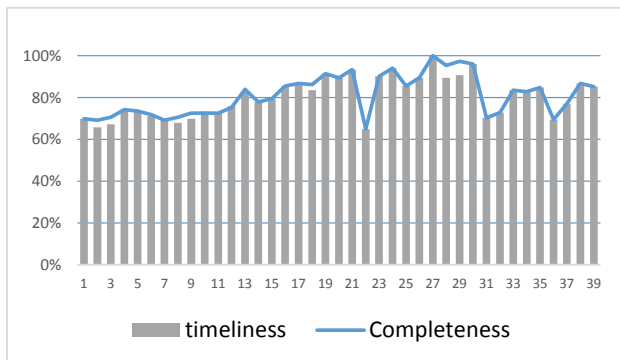
- A new level of EWARN team has been trained (field level officers) FLOs, the program has been expanded, and we add new sentinel sites, and new areas .the target is cover more than 250 health center.
- During Epi-week no 39 2014;85,2% (225/264) of the health facilities across 9 Governorates provided surveillance data,85,2% of reporting sites submitted the weekly reports on time.
- The total number of consultations reported during the reporting week was 72307 (including 40% children under the age of five) compared to 67955 consultations during week 38. The leading cause of morbidity was STF (Suspected typhoid fever), with over 1186 cases (1.64%).
- 122 measles cases reported in this week, line list collected by name and age and district, started at week No 4.
- Reports about the AEFI is sent daily to the central level coordinators by EWARN team (DLOs-FLOs)
- As of week 39, 3 new AFP (Acute Flaccid Paralysis) cases reported, 54 AFP cases reported in 2014 up to date. See weekly Poliomyelitis outbreak report for more details.
- Common disease reported under others were URTI (upper respiratory tract infection), acute bronchiolitis, whooping cough, acute diarrhea, Brucellosis and Cutaneous leishmaniasis. Because of the cold weather increase the number of (SARI)cases

EWARN coverage

ACU EWARN covers 110 sub-District in 9 governorate



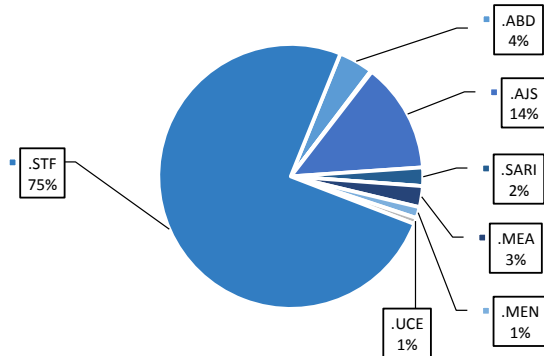
Completeness and timeliness



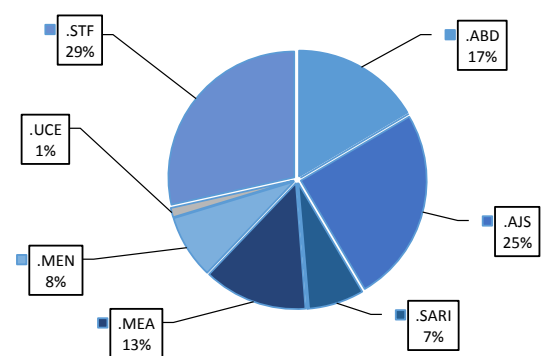
Number of sentinel sites and Total Number of Consultations per Governorate

Governorate	No of sentinel	Reporting Sentinels	No of consultations
ALEPPO	62	58	93.5%
AL-HASSAKA	15	15	100.0%
AR-RAQQA	53	42	79.2%
DEIR-EZ-ZOR	55	50	90.9%
HAMA	9	5	55.6%
IDLEB	49	36	73.5%
R.DAMASCUS	8	8	100.0%
DARAA	7	7	100.0%
LATTAKIA	6	4	66.7%
Grand total	264	225	85.2%

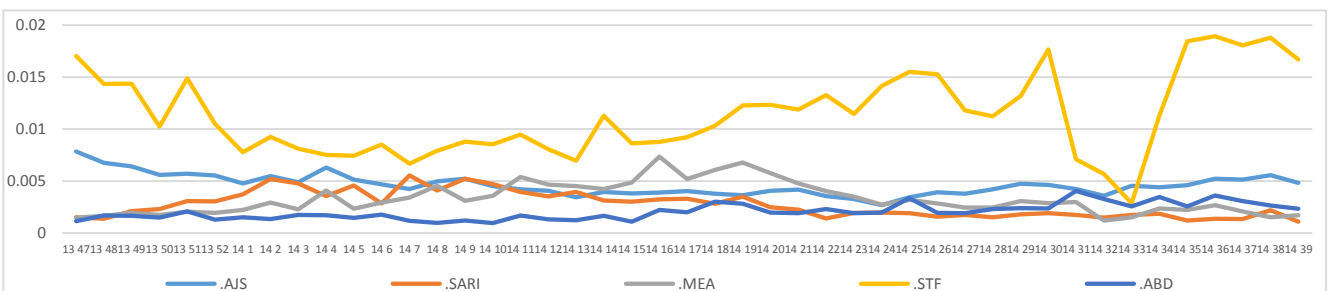
Proportion of morbidities among >5Y



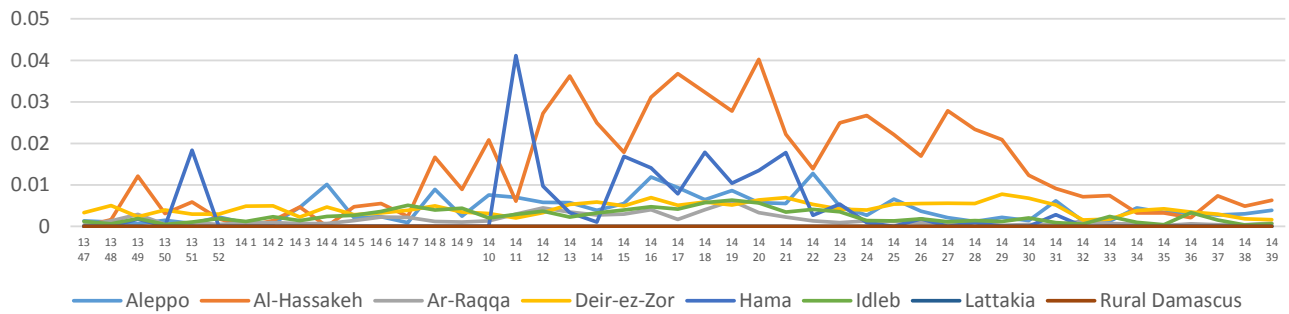
Proportion of morbidities among <5Y



Trends for Leading Priority Diseases in 7 Governorates – Epi week 47, 2013 to Epi week 39 2014



Proportional Morbidity of suspected Measles by Governorate, Epi Week 39



Number of cases (n) and propotional morbidity(%) by Epi week and leading priority Syndrom1 for governorate.Epi week 39

Governorate		week 38					Total*	week 39					Total*
		STF	AJS	ABD	MEA	SARI		STF	AJS	ABD	MEA	SARI	
Aleppo	NO.	110	97	46	50	13	16864	79	93	44	64	5	16750
	%	0.65%	0.58%	0.27%	0.30%	0.08%		0.47%	0.56%	0.26%	0.38%	0.03%	
Al-hassaka	NO.	2	13	7	9	5	1930	2	9	7	12	0	1990
	%	0.10%	0.67%	0.36%	0.47%	0.26%		0.10%	0.45%	0.35%	0.60%	0.00%	
Ar-rqqa	NO.	92	20	31	5	5	11401	102	22	39	9	3	10476
	%	0.81%	0.18%	0.27%	0.04%	0.04%		0.97%	0.21%	0.37%	0.09%	0.03%	
Deir-ez-zor	NO.	481	197	61	32	62	17588	469	139	58	29	52	17900
	%	2.73%	1.12%	0.35%	0.18%	0.35%		2.62%	0.78%	0.32%	0.16%	0.29%	
Hama	NO.	7	8	9	0.00%	8	1616	8	4	4	0.00%	7	1344
	%	0.43%	0.50%	0.56%	0.00%	0.50%		0.60%	0.30%	0.30%	0.00%	0.52%	
Idleb	NO.	492	18	4	4	15	12649	454	33	10	8	10	14197
	%	3.89%	0.14%	0.03%	0.03%	0.12%		3.20%	0.23%	0.07%	0.06%	0.07%	
Rural Damascus	NO.	35	9	0	0	0	1190	61	39	0	0	0	3403
	%	2.94%	0.76%	0.00%	0.00%	0.00%		1.79%	1.15%	0.00%	0.00%	0.00%	
Daraa	NO.	7	2	17	0	36	2110	1	4	3	0	0	4380
	%	0.33%	0.09%	0.81%	0.00%	1.71%		0.02%	0.09%	0.07%	0.00%	0.00%	
Lattakia	NO.	12	3	0	0	0	2607	10	0	0	0	0	1867
	%	0.46%	0.12%	0.00%	0.00%	0.00%		0.54%	0.00%	0.00%	0.00%	0.00%	
TOTAL	<5	199	205	118	71	88	27269	188	165	109	88	47	29172
	>5	1039	162	57	29	56	38620	998	178	56	34	30	41829
Grand total	NO.	1238	367	175	100	100	67955	1186	343	165	122	122	72307
	%	1.82%	0.54%	0.26%	0.15%	0.15%		1.64%	0.47%	0.23%	0.17%	0.17%	

Alerts/Outbreak Investigated and Response Activity in Epi-week 39 2014

Disease	Alert threshold	#HF reach threshold	# Cases	The most affected communities[1]	Response Activity / Actions Taken*	comments
AFP	1	3	3	Deir-ez-zor Deir-ez-zor Aleppo	Response team toured supportive supervision in all Governorates	
MEA	1	36	122	Aleppo:Menbij Deir Ez Zor	Line list of (AEFI) collected in central level	
AJS	5	23	343	Deir Ez Zor Aleppo:Menbij	High number of cases in Deir Ez Zor	
STF (typhoid fever)	5	21	1186	Idleb Deir-ez-zor:Sbeka	we coordinate with WASH experts to response	

ABD=Acute Bloody Diarrhea AWD=Acute Watery Diarrhea AFP=Acute Flaccid Paralysis AJS=Acute Jaundice Syndrome SARI= Severe Acute Respiratory Illness
UXD=Unexplained Death FUU=Fever Of Unknown Origin MEA=suspected Measles MEN= suspected Meningitis UCE=Unexplained Cluster Of Health Events

For any queries: please do not hesitate to contact the EWARN Unit at the ewarn@acu-sy.org

100

—
s

—
k