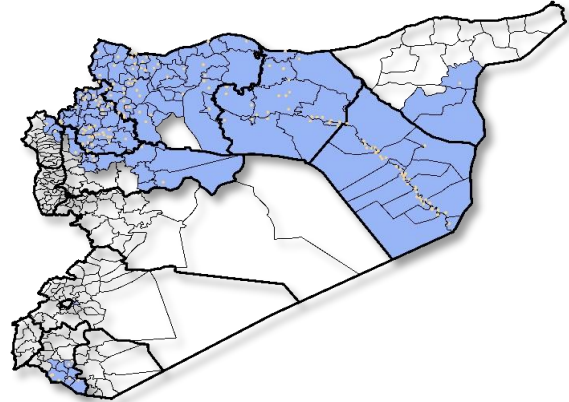


Highlights

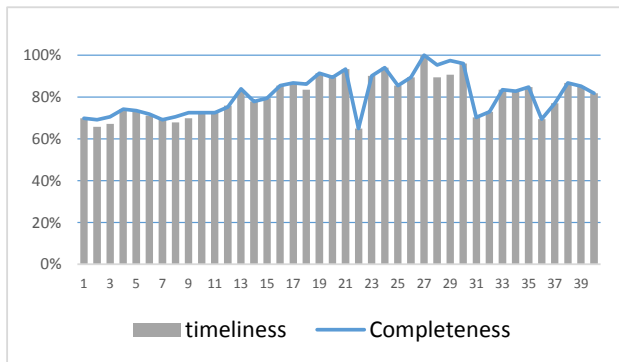
- A new level of EWARN team has been trained (field level officers) FLOs, the program has been expanded, and we add new sentinel sites, and new areas .the target is cover more than 250 health center. •During Epi-week no 40, 2014;81.8% (216/264) of the health facilities across 9 Governorates provided surveillance data 81.8% of reporting sites submitted the weekly reports on time.
- The total number of consultations reported during the reporting week was 67222 (including 40% children under the age of five) compared to 72307 consultations during week 39. The leading cause of morbidity was STF (Suspected typhoid fever), with over 1079 cases (1.61%).
- 86 measles cases reported in this week,line list collected by name and age and district,started at week No 4. •Reports about the AEFI is sent daily to the central level coordinators by EWARN team (DLOs-FLOs)
- As of week 40. No new AFP (Acute Flaccid Paralysis) cases reported, 54 AFP cases reported in 2014 up to date. See weekly Poliomyelitis outbreak report for more details.
- Common disease reported under others were URTI (upper respiratory tract infection), acute bronchiolitis, whooping cough, acute diarrhea, Brucellosis and Cutaneous leishmaniasis. Because of the cold weather increase the number of (SARI)cases

EWARN coverage

ACU EWARN covers 110 sub-District in 9 governorate



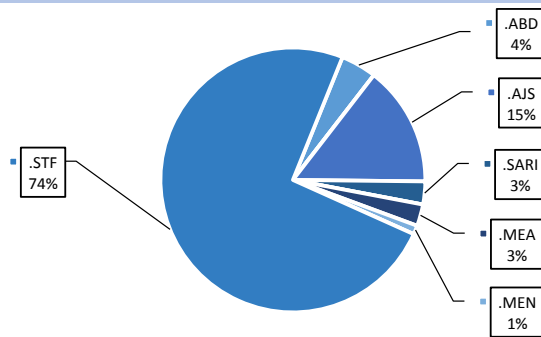
Completeness and timeliness



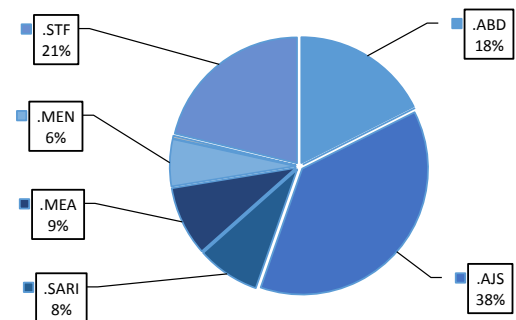
Number of sentinel sites and Total Number of Consultations per Governorate

Governorate	No of sentinel	Reporting Sentinels	No of consultations
ALEPPO	62	54	14378
AL-HASSAKA	15	15	1872
AR-RAQQA	53	41	10044
DEIR-EZ-ZOR	55	49	17794
HAMA	9	5	1147
IDLEB	49	32	10758
R.DAMASCUS	8	8	2328
DARAA	7	7	6856
LATTAKIA	6	5	2045
Grand total	264	216	67222

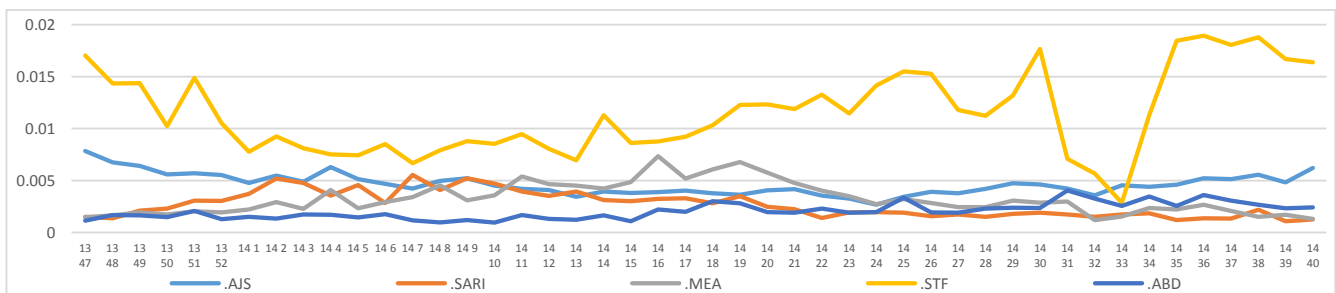
Proportion of morbidities among >5Y



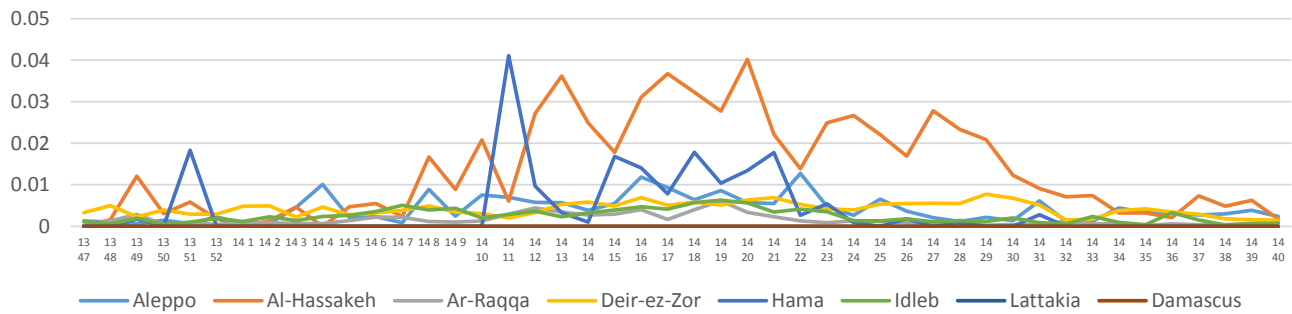
Proportion of morbidities among <5Y



Trends for Leading Priority Diseases in 7 Governorates – Epi week 47, 2013 to Epi week 40 2014



Proportional Morbidity of suspected Measles by Governorate, Epi Week 40



Number of cases (n) and propotional morbidity(%) by Epi week and leading priority Syndrom1 for governorate.Epi week 40

Governorate		week 39					Total*	week 40					Total*
		STF	AJS	ABD	MEA	SARI		STF	AJS	ABD	MEA	SARI	
Aleppo	NO.	79	93	44	64	5	16750	73	94	35	35	14	14378
	%	0.47%	0.56%	0.26%	0.38%	0.03%		0.51%	0.65%	0.24%	0.24%	0.10%	
Al-hassaka	NO.	2	9	7	12	0	1990	4	8	10	3	2	1872
	%	0.10%	0.45%	0.35%	0.60%	0.00%		0.21%	0.43%	0.53%	0.16%	0.11%	
Ar-rqqa	NO.	102	22	39	9	3	10476	94	16	32	13	3	10044
	%	0.97%	0.21%	0.37%	0.09%	0.03%		0.94%	0.16%	0.32%	0.13%	0.03%	
Deir-ez-zor	NO.	469	139	58	29	52	17900	512	223	64	26	42	17794
	%	2.62%	0.78%	0.32%	0.16%	0.29%		2.88%	1.25%	0.36%	0.15%	0.24%	
Hama	NO.	8	4	4	0.00%	7	1344	11	10	5	0.00%	12	1147
	%	0.60%	0.30%	0.30%	0.00%	0.52%		0.96%	0.87%	0.44%	0.00%	1.05%	
Idleb	NO.	454	33	10	8	10	14197	308	27	12	8	10	10758
	%	3.20%	0.23%	0.07%	0.06%	0.07%		2.86%	0.25%	0.11%	0.07%	0.09%	
Rural Damascus	NO.	61	39	0	0	0	3403	58	26	0	0	0	2328
	%	1.79%	1.15%	0.00%	0.00%	0.00%		2.49%	1.12%	0.00%	0.00%	0.00%	
Daraa	NO.	1	4	3	0	0	4380	7	1	0	1	0	6856
	%	0.02%	0.09%	0.07%	0.00%	0.00%		0.10%	0.01%	0.00%	0.01%	0.00%	
Lattakia	NO.	10	0	0	0	0	1867	12	3	0	0	0	2045
	%	0.54%	0.00%	0.00%	0.00%	0.00%		0.59%	0.15%	0.00%	0.00%	0.00%	
TOTAL	<5	188	165	109	88	47	29172	123	219	102	52	47	27843
	>5	998	178	56	34	30	41829	956	189	56	34	36	37970
Grand total	NO.	1186	343	165	122	122	72307	1079	408	158	86	86	67222
	%	1.64%	0.47%	0.23%	0.17%	0.17%		1.61%	0.61%	0.24%	0.13%	0.13%	

Alerts/Outbreak Investigated and Response Activity in Epi-week 40 2014

Disease	Alert threshold	#HF reach threshold	# Cases	The most affected communities[1]	Response Activity / Actions Taken*	comments
AFP	1	0	0		Response team toured supportive supervision in all Governorates	
MEA	1	26	86	Ar-raqqa Idleb	Line list of (AEFI) collected in central level	
AJS	5	20	408	Aleppo: Deir-ez-zor	High number of cases in Deir Ez Zor	
STF (typhoid fever)	5	48	1079	Ar-raqqa Deir-ez-zor Lattakia	we coordinate with WASH experts to response	

ABD=Acute Bloody Diarrhea AWD=Acute Watery Diarrhea AFP=Acute Flaccid Paralysis AJS=Acute Jaundice Syndrome SARI= Severe Acute Respiratory Illness
 UXD=Unexplained Death FUO=Fever Of Unknown Origin MEA=suspected Measles MEN= suspected Meningitis UCE=Unexplained Cluster Of Health Events

For any queries: please do not hesitate to contact the EWARN Unit at the ewarn@acu-sy.org

Epidemiological Weekly Bulletin- Syria EWARN- Epi week

