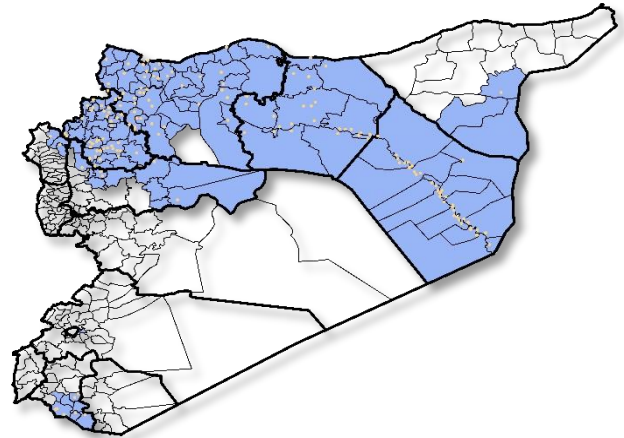


Highlights

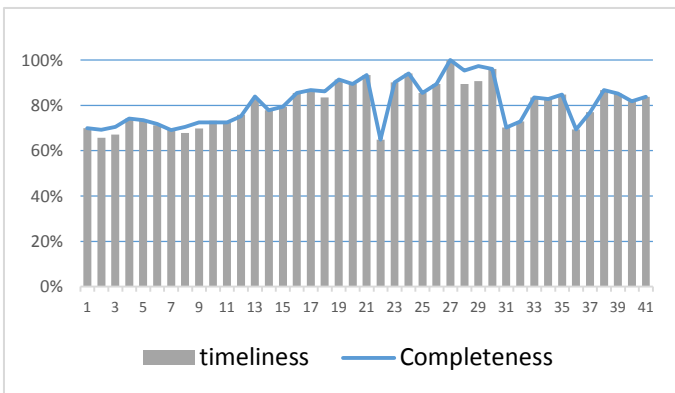
- A new level of EWARN team has been trained (field level officers) FLOs, the program has been expanded, and we add new health centers, and new areas .the target is cover more than 250 health center. •During Epi-week no 41 2014; 83.7% (221/264) of the health facilities across 9 Governorates provided surveillance data 83.7% of reporting sites submitted the weekly reports on time.
- The total number of consultations reported during the reporting week was 55021 (including 40% children under the age of five) compared to 67222 consultations during week 40. The leading cause of morbidity was STF (Suspected typhoid fever), with over 1202 cases (2.18%).
- 81 measles cases reported in this week, line list collected by name and age and district, started at week No 4. •Reports about the AEFI is sent daily to the central level coordinators by EWARN team (DLOs-FLOs)
- As of week 41, no new AFP (Acute Flaccid Paralysis) cases reported, 54 AFP cases reported in 2014 up to date. See weekly Poliomyelitis outbreak report for more details.
- Common disease reported under others were URTI (upper respiratory tract infection), acute bronchitis, whooping cough, acute diarrhea, Brucellosis and Cutaneous leishmaniasis.

EWARN coverage

ACU EWARN covers 110 sub-District in 9 governorate



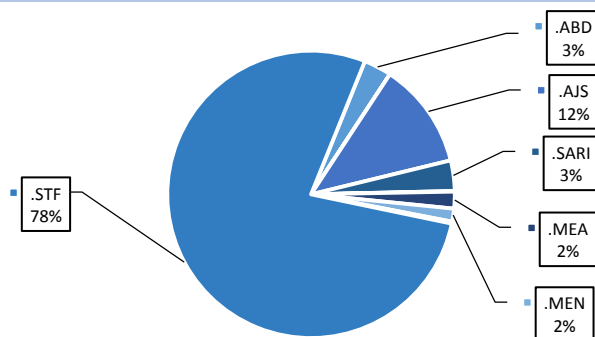
Completeness and timeliness



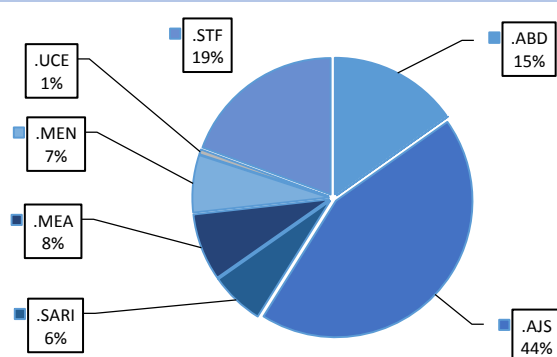
Number of sentinel sites and Total Number of Consultations per Governorate

Governorate	No of sentinel	Reporting Sentinels		No of consultations
ALEPPO	62	44	71.0%	7801
AL-HASSAKA	15	16	106.7%	1718
AR-RAQQA	53	45	84.9%	8305
DEIR-EZ-ZOR	55	50	90.9%	16102
HAMA	9	5	55.6%	1327
IDLEB	49	41	83.7%	14803
R.DAMASCUS	8	8	100.0%	849
DARAA	7	7	100.0%	2213
LATTAKIA	6	5	83.3%	1903
Grand total	264	221	83.7%	55021

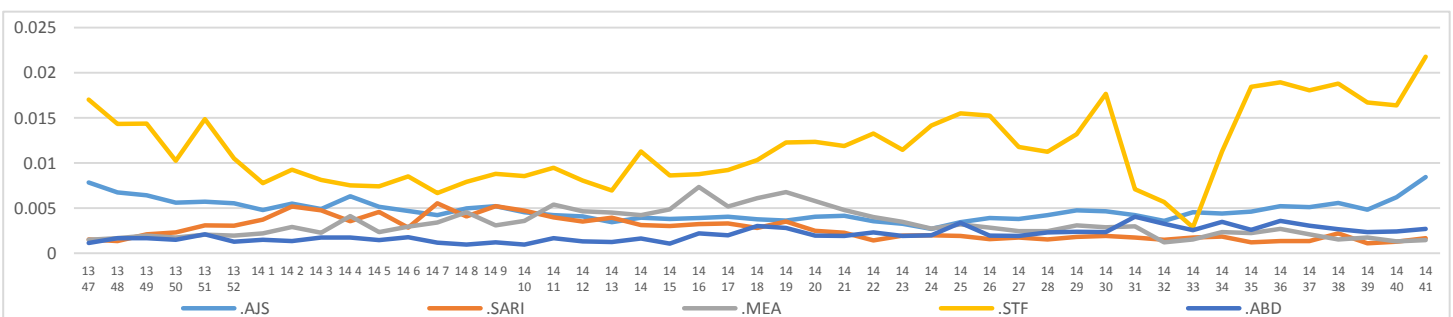
Proportion of morbidities among >5Y



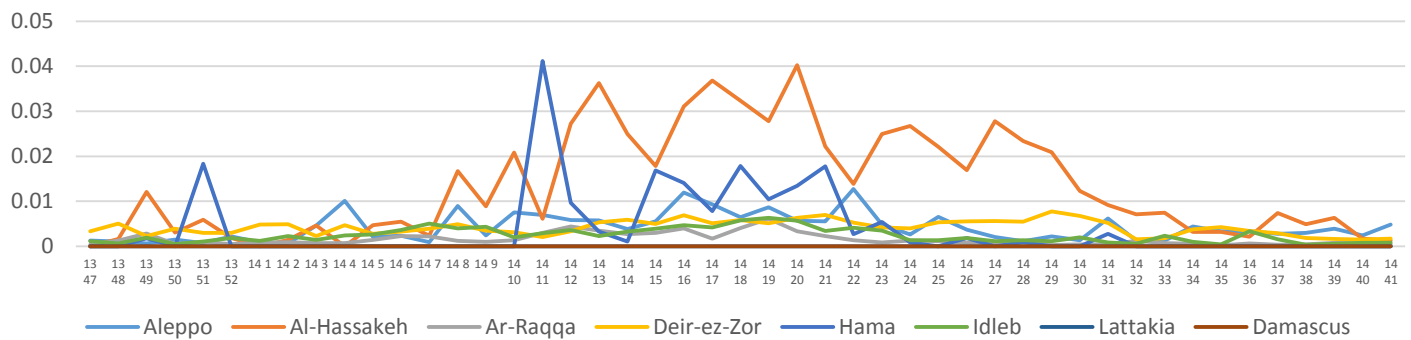
Proportion of morbidities among <5Y



Trends for Leading Priority Diseases in 7 Governorates – Epi week 47, 2013 to Epi week 41 2014



Proportional Morbidity of suspected Measles by Governorate, Epi Week 41



Number of cases (n) and propotional morbidity(%) by Epi week and leading priority Syndrom1 for governorate.Epi week 41

Governorate		week 40						week 41					
		STF	AJS	ABD	MEA	SARI	Total*	STF	AJS	ABD	MEA	SARI	Total*
Aleppo	NO.	73	94	35	35	14	14378	57	110	36	37	7	7801
	%	0.51%	0.65%	0.24%	0.24%	0.10%		0.73%	1.41%	0.46%	0.47%	0.09%	
Al-hassaka	NO.	4	8	10	3	2	1872	2	5	10	2	7	1718
	%	0.21%	0.43%	0.53%	0.16%	0.11%		0.12%	0.29%	0.58%	0.12%	0.41%	
Ar-rqqa	NO.	94	16	32	13	3	10044	97	7	17	4	2	8305
	%	0.94%	0.16%	0.32%	0.13%	0.03%		1.17%	0.08%	0.20%	0.05%	0.02%	
Deir-ez-zor	NO.	512	223	64	26	42	17794	488	275	79	27	41	16102
	%	2.88%	1.25%	0.36%	0.15%	0.24%		3.03%	1.71%	0.49%	0.17%	0.25%	
Hama	NO.	11	10	5	0.00%	12	1147	11	5	3	0.00%	16	1327
	%	0.96%	0.87%	0.44%	0.00%	1.05%		0.83%	0.38%	0.23%	0.00%	1.21%	
Idlib	NO.	308	27	12	8	10	10758	522	46	3	11	17	14803
	%	2.86%	0.25%	0.11%	0.07%	0.09%		3.53%	0.31%	0.02%	0.07%	0.11%	
Rural Damascus	NO.	58	26	0	0	0	2328	14	14	0	0	0	849
	%	2.49%	1.12%	0.00%	0.00%	0.00%		1.65%	1.65%	0.00%	0.00%	0.00%	
Daraa	NO.	7	1	0	1	0	6856	0	2	0	0	1	2213
	%	0.10%	0.01%	0.00%	0.01%	0.00%		0.00%	0.09%	0.00%	0.00%	0.05%	
Lattakia	NO.	12	3	0	0	0	2045	11	2	0	0	0	1903
	%	0.59%	0.15%	0.00%	0.00%	0.00%		0.58%	0.11%	0.00%	0.00%	0.00%	
TOTAL	<5	123	219	102	52	47	27843	134	302	105	55	44	23354
	>5	956	189	56	34	36		1068	164	43	26	47	
Grand total	NO.	1079	408	158	86	86	67222	1202	466	148	81	81	55021
	%	1.61%	0.61%	0.24%	0.13%	0.13%		2.18%	0.85%	0.27%	0.15%	0.15%	

Alerts/Outbreak Investigated and Response Activity in Epi-week 41 2014

Disease	Alert threshold	#HF reach threshold	# Cases	The most affected communities[1]	Response Activity / Actions Taken*	comments
AFP	1	0	0		Response team toured supportive supervision in all Governorates	
MEA	1	24	81	Deir-ez-zor Idlib	Line list of (AEFI) collected in central level	
AJS	5	21	466	Aleppo Deir-ez-zor	High number of cases in Deir Ez Zor and Idlib	
STF (typhoid fever)	5	51	1202	Idlib Deir-ez-zor Lattakia	we coordinate with WASH experts to response	

ABD=Acute Bloody Diarrhea AWD=Acute Watery Diarrhea AFP=Acute Flaccid Paralysis AJS=Acute Jaundice Syndrome SARI= Severe Acute Respiratory Illness
 UXD=Unexplained Death FOU=Fever Of Unknown Origin MEA=suspected Measles MEN= suspected Meningitis UCE=Unexplained Cluster Of Health Events

For any queries: please do not hesitate to contact the EWARN Unit at the ewarn@acu-sy.org

Epidemiological Weekly Bulletin- Syria EWARN- Epi week

