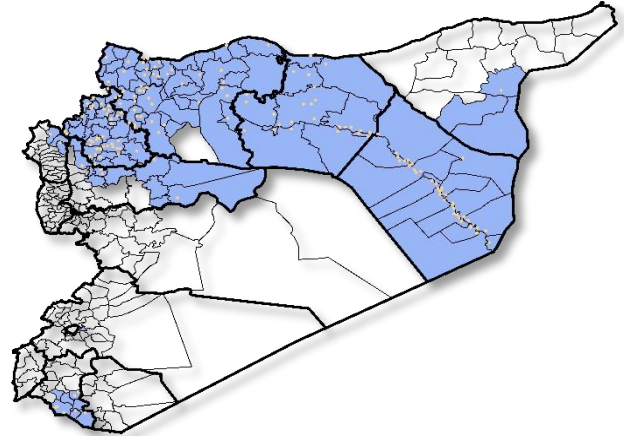


Highlights

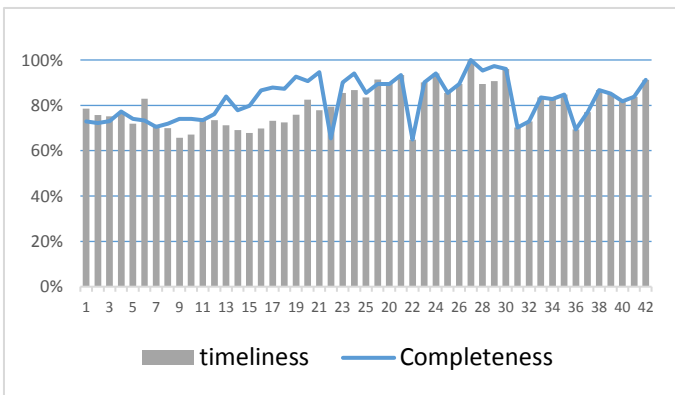
- A new level of EWARN team has been trained (field level officers) FLOs, the program has been expanded, and we add new health centers, and new areas .the target is cover more than 250 health center. •During Epi-week no 42, 2014;91.3% (241/264) of the health facilities across 9 Governorates provided surveillance data 91.3% of reporting sites submitted the weekly reports on time.
- The total number of consultations reported during the reporting week was 72066(including 40% children under the age of five) compared to 55021 consultations during week 41. The leading cause of morbidity was STF (Suspected typhoid fever), with over 943 cases (1.31%).
- 86 measles cases reported in this week,line list collected by name and age and district,started at week No 4. •Reports about the AEFI is sent daily to the central level coordinators by EWARN team (DLOs-FLOs)
- As of week 42, 3 new AFP (Acute Flaccid Paralysis) cases reported, 57 AFP cases reported in 2014 up to date. See weekly Poliomyelitis outbreak report for more details.
- Common disease reported under others were URTI (upper respiratory tract infection), acute bronchiolitis, whooping cough, acute diarrhea, Brucellosis and Cutaneous leishmaniasis.
- 697 new leishmaniasis cases reported in this week.

EWARN coverage

ACU EWARN covers 110 sub-District in 9 governorate



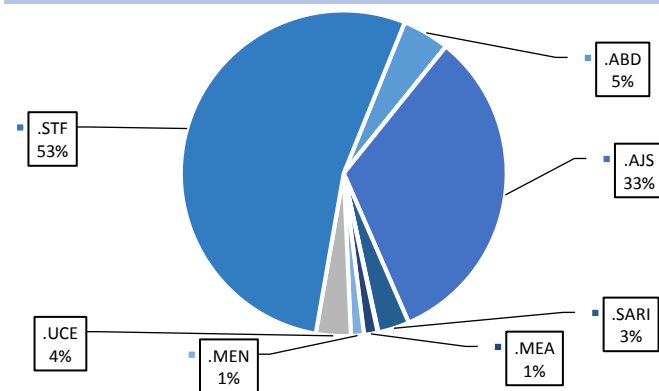
Completeness and timeliness



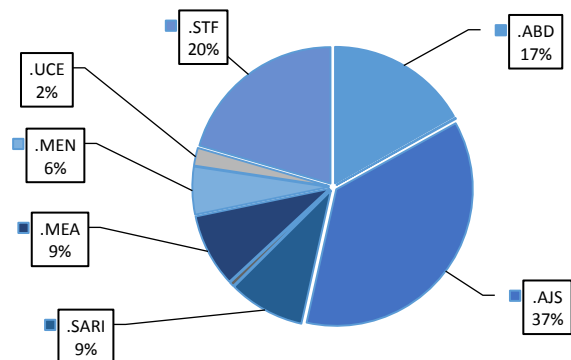
Number of sentinel sites and Total Number of Consultations per Governorate

Governorate	No of sentinel	Reporting Sentinel		No of consultations
ALEPPO	62	61	98.4%	17546
AL-HASSAKA	15	16	106.7%	1960
AR-RAQQA	53	49	92.5%	12618
DEIR-EZ-ZOR	55	53	96.4%	17972
HAMA	9	10	111.1%	3034
IDLEB	49	32	65.3%	8966
R.DAMASCUS	8	8	100.0%	2737
DARAA	7	7	100.0%	5114
LATTAKIA	6	5	83.3%	2119
Grand total	264	241	91.3%	72066

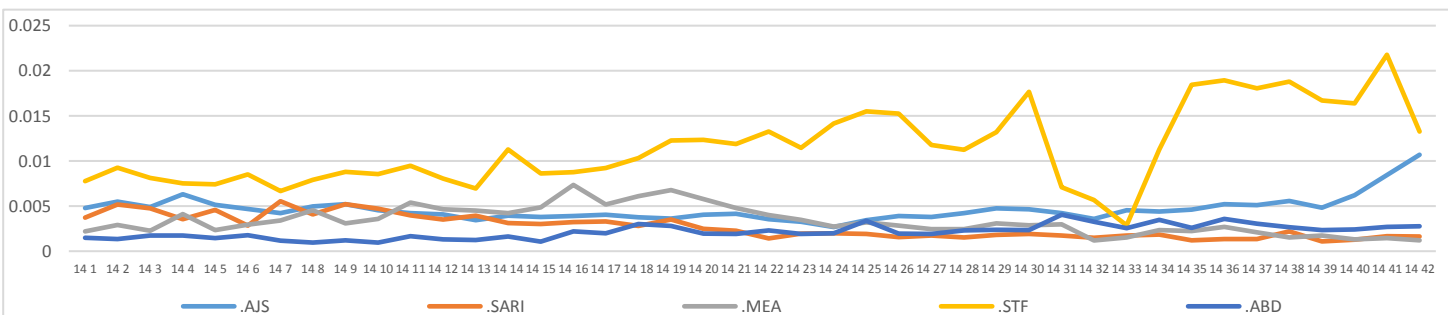
Proportion of morbidities among >5Y



Proportion of morbidities among <5Y

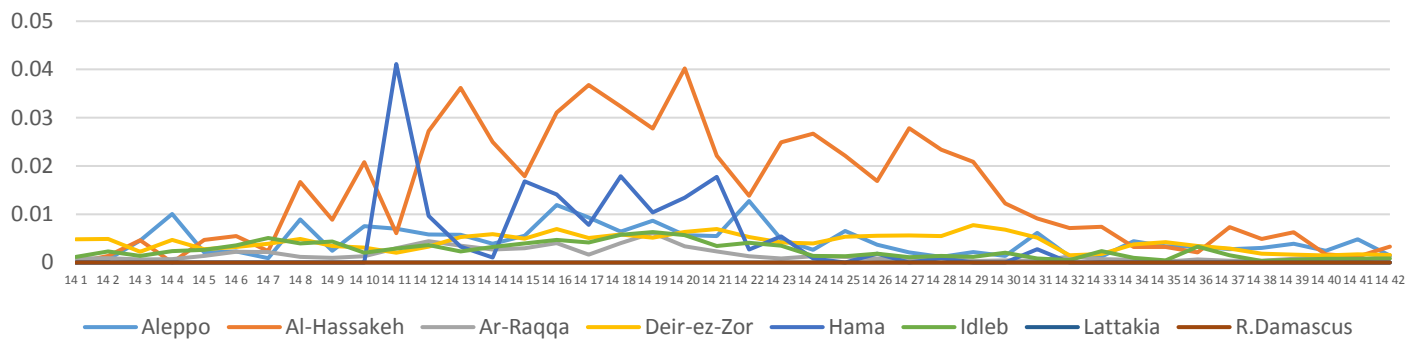


Trends for Leading Priority Diseases in 7 Governorates – Epi week 47, 2013 to Epi week 42 2014



Proportional Morbidity of suspected Measles by Governorate, Epi Week

42



Number of cases (n) and propotional morbidity(%) by Epi week and leading priority Syndrom1 for governorate.Epi week 42

Governorate		week 41						week 42					
		STF	AJS	ABD	MEA	SARI	Total*	STF	AJS	ABD	MEA	SARI	Total*
Aleppo	NO.	57	110	36	37	7	14378	77	345	56	25	19	17546
	%	0.73%	1.41%	0.46%	0.47%	0.09%		0.44%	1.97%	0.32%	0.14%	0.11%	
Al-hassaka	NO.	2	5	10	2	7	1872	2	7	12	6	6	1960
	%	0.12%	0.29%	0.58%	0.12%	0.41%		0.10%	0.36%	0.61%	0.31%	0.31%	
Ar-rqqa	NO.	97	7	17	4	2	10044	97	21	25	17	5	12618
	%	1.17%	0.08%	0.20%	0.05%	0.02%		0.77%	0.17%	0.20%	0.13%	0.04%	
Deir-ez-zor	NO.	488	275	79	27	41	17794	532	335	82	28	47	17972
	%	3.03%	1.71%	0.49%	0.17%	0.25%		2.96%	1.86%	0.46%	0.16%	0.26%	
Hama	NO.	11	5	3	0.00%	16	1147	14	10	8	0.00%	26	3034
	%	0.83%	0.38%	0.23%	0.00%	1.21%		0.46%	0.33%	0.26%	0.00%	0.86%	
Idleb	NO.	522	46	3	11	17	10758	171	18	13	7	12	8966
	%	3.53%	0.31%	0.02%	0.07%	0.11%		1.91%	0.20%	0.14%	0.08%	0.13%	
Rural Damascus	NO.	14	14	0	0	0	2328	49	21	0	3	0	2737
	%	1.65%	1.65%	0.00%	0.00%	0.00%		1.79%	0.77%	0.00%	0.11%	0.00%	
Daraa	NO.	0	2	0	0	1	6856	0	1	0	0	0	5114
	%	0.00%	0.09%	0.00%	0.00%	0.05%		0.00%	0.02%	0.00%	0.00%	0.00%	
Lattakia	NO.	11	2	0	0	0	2045	1	2	1	0	0	2119
	%	0.58%	0.11%	0.00%	0.00%	0.00%		0.05%	0.09%	0.05%	0.00%	0.00%	
TOTAL	<5	134	302	105	55	44	27843	134	302	105	55	44	23354
	>5	1068	164	43	26	47		1068	164	43	26	47	
Grand total	NO.	1202	466	148	81	81	67222	943	760	197	86	91	72066
	%	2.18%	0.85%	0.27%	0.15%	0.15%		1.31%	1.05%	0.27%	0.12%	0.12%	

Alerts/Outbreak Investigated and Response Activity in Epi-week 42 2014

Disease	Alert threshold	#HF reach threshold	# Cases	The most affected communities[1]	Response Activity / Actions Taken*	comments
AFP	1	3	3	Deir-ez-zor	Response team toured supportive supervision in all Governorates	
MEA	1	7	86	Deir-ez-zor Aleppo	Line list of (AEFI) collected in central level	
AJS	5	24	760	Deir-ez-zor Idleb	High number of cases in Deir Ez Zor and Idleb	
STF	5	50	943	Deir-ez-zor Aleppo	we coordinate with WASH experts to response	

ABD=Acute Bloody Diarrhea AWD=Acute Watery Diarrhea AFP=Acute Flaccid Paralysis AJS=Acute Jaundice Syndrome SARI= Severe Acute Respiratory Illness
UXD=Unexplained Death FUU= Fever Of Unknown Origin MEA=suspected Measles MEN= suspected Meningitis UCE=Unexplained Cluster Of Health Events

For any queries: please do not hesitate to contact the EWARN Unit at the ewarn@acu-sy.org

Epidemiological Weekly Bulletin- Syria EWARN- Epi week

