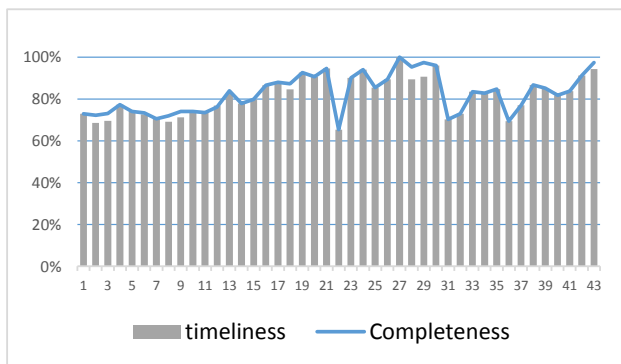


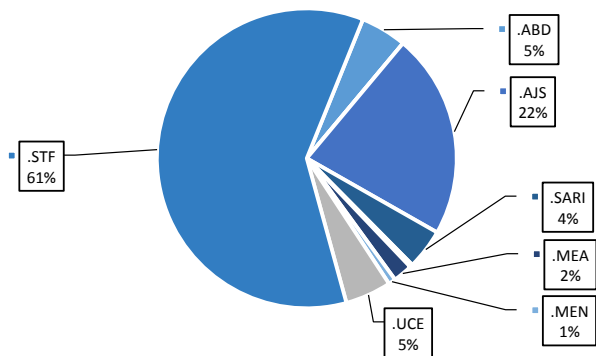
Highlights

- A new level of EWARN team has been trained (field level officers) FLOs, the program has been expanded, and we add new health centers, and new areas. the target is cover more than 250 health center.
- During Epi-week no 43 2014; 97,3% (257/264) of the health facilities across 9 Governorates provided surveillance data 94,4% of reporting sites submitted the weekly reports on time.
- The total number of consultations reported during the reporting week was 81382 (including 40% children under the age of five) compared to 72066 consultations during week 42. The leading cause of morbidity was STF (Suspected typhoid fever), with over 905 cases (1.11%).
- 74 measles cases reported in this week, line list collected by name and age and district, started at week No 4.
  - AEFI fowlling up stopped as more than 35 days after the campaign ended
- As of week 43, 6 new AFP (Acute Flaccid Paralysis) cases reported, 63 AFP cases reported in 2014 up to date. See weekly Poliomyelitis outbreak report for more details.
- Common disease reported under others were URTI (upper respiratory tract infection), acute bronchiolitis, whooping cough, acute diarrhea, Brucellosis and Cutaneous leishmaniasis.
- 659 new leishmaniasis cases reported in this week.

Completeness and timeliness

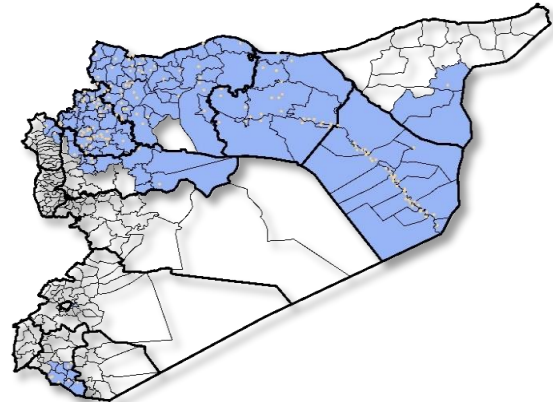


Percentage of EWARN Syndromes >5Y



EWARN coverage

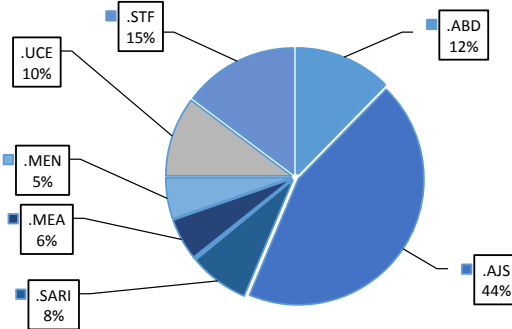
ACU EWARN covers 119 sub-District in 9 governorate



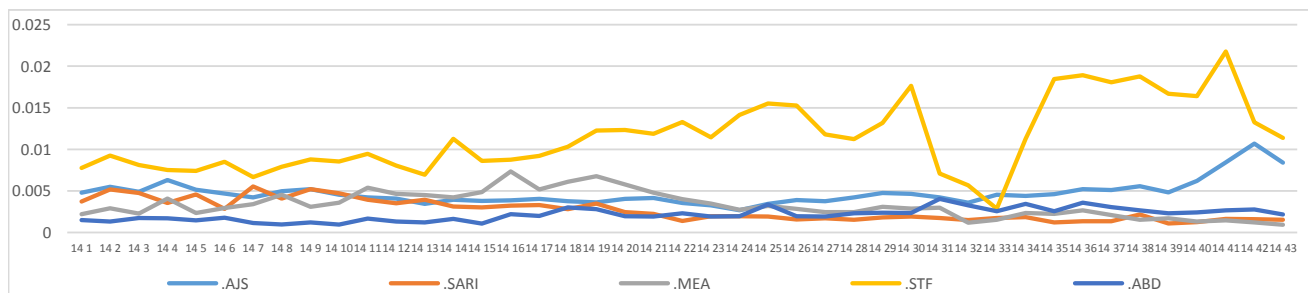
Number of sentinel sites and Total Number of Consultations per Governorate

Governorate	No of sentinel	Reporting Sentinels	No of consultations
ALEPPO	62	72	116.1%
AL-HASSAKA	15	16	106.7%
AR-RAQQA	53	52	98.1%
DEIR-EZ-ZOR	55	53	96.4%
HAMA	9	5	55.6%
IDLEB	49	39	79.6%
R.DAMASCUS	8	8	100.0%
DARAA	7	7	100.0%
LATTAKIA	6	5	83.3%
Grand total	264	257	97.3%

Percentage of EWARN Syndromes <5Y

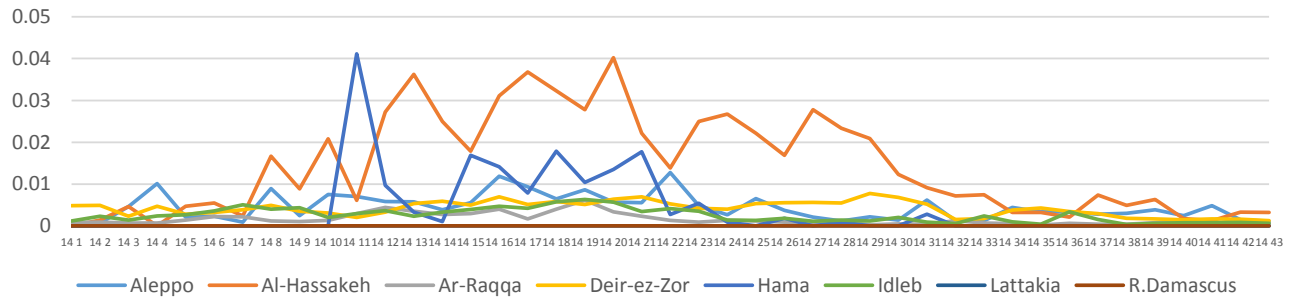


Trends for Essential Priority Diseases in 9 Governorates – Epi week 47, 2013 to Epi week 43 2014



Proportional Morbidity of suspected Measles by Governorate, Epi Week

43



Number of cases (n) and propotional morbidity(%) by Epi week and essential priority Syndroms for governorate.Epi week

43

Governorate		week 42					Total Consultations	week 43					Total Consultations
		STF	AJS	ABD	MEA	SARI		STF	AJS	ABD	MEA	SARI	
Aleppo	NO.	77	345	56	25	19	17546	81	131	34	22	27	19782
	%	0.44%	1.97%	0.32%	0.14%	0.11%		0.41%	0.66%	0.17%	0.11%	0.14%	
Al-hassaka	NO.	2	7	12	6	6	1960	3	4	12	6	3	1987
	%	0.10%	0.36%	0.61%	0.31%	0.31%		0.15%	0.20%	0.60%	0.30%	0.15%	
Ar-rqqa	NO.	97	21	25	17	5	12618	90	25	33	9	3	12786
	%	0.77%	0.17%	0.20%	0.13%	0.04%		0.70%	0.20%	0.26%	0.07%	0.02%	
Deir-ez-zor	NO.	532	335	82	28	47	17972	483	427	75	22	59	17867
	%	2.96%	1.86%	0.46%	0.16%	0.26%		2.70%	2.39%	0.42%	0.12%	0.33%	
Hama	NO.	14	10	8	0.00%	26	3034	9	8	6	0.00%	11	1513
	%	0.46%	0.33%	0.26%	0.00%	0.86%		0.59%	0.53%	0.40%	0.00%	0.73%	
Idleb	NO.	171	18	13	7	12	8966	197	40	11	11	20	18645
	%	1.91%	0.20%	0.14%	0.08%	0.13%		1.06%	0.21%	0.06%	0.06%	0.11%	
Rural Damascus	NO.	49	21	0	3	0	2737	28	30	0	3	0	2901
	%	1.79%	0.77%	0.00%	0.11%	0.00%		0.97%	1.03%	0.00%	0.10%	0.00%	
Daraa	NO.	0	1	0	0	0	5114	7	0	0	1	0	3773
	%	0.00%	0.02%	0.00%	0.00%	0.00%		0.19%	0.00%	0.00%	0.03%	0.00%	
Lattakia	NO.	1	2	1	0	0	2119	7	2	0	0	0	2128
	%	0.05%	0.09%	0.05%	0.00%	0.00%		0.33%	0.09%	0.00%	0.00%	0.00%	
TOTAL	<5	156	278	128	66	69	30345	128	382	107	47	67	30933
	>5	787	482	69	20	46		40754	777	285	64	27	
Grand total	NO.	943	760	197	86	115	72066	905	667	171	74	123	81382
	%	1.31%	1.05%	0.27%	0.12%	0.16%		1.11%	0.82%	0.21%	0.09%	0.15%	

Alerts/Outbreak Investigated and Response Activity in Epi-week

43 2014

Disease	Alert threshold	#HF reach threshold	# Cases	The most affected Communities-Districts	Response Activity / Actions Taken*	comments
AFP	1	6	6	Idleb: Maaret Tamsrin Jabel Saman- Membij Ar raqqa: Karama Lattakia: Rabee'a a	Our DLOs collected the stool samples despite of the difficulty.our lab expert distributed special kits to collect stool samples.	
MEA	1	19	74	Membij: Abu Qalqal Deir-ez-zor : Deir-ez-zor Harim : Armanaz Ar raqqa: :Ar raqqa	AEFI fowling up stopped as more than 35 days after the campaign ended Equipment for Measles Lab in (Atareb) is under processing	
AJS	5	28	667	Al Mayadin : Ashara Harim : Dana Jebel Samman	Line list collected in some HFIdleb & Deir Ez-Zor. The result will declared soon. Hepatitis A confirmed in some cases.	
STF	5	50	905	Al Mayadin: Ashara JisrAshShugur : Darkosh	coordination with WASH sector and Relief Internatioal experts to supply chloride to water resources in some areas in Deir-ez-zor (Al Mayadin)	
ABD	5	0	171	Al Mayadin Membij :Membij		
SARI	5	3	123	Abu kamal: Abu Kamal Jabel Saman : Atareb Al Mayadin : Ashara	Slight increase in cases` s number within tha last 3 weeks	
MEN	5	0	56	Membij: Membij Ar raqqa: Ar raqqa		
FUO	5	10	274	Rural Damascus:Kafr batna Jabel Saman: Hritan		
UCE (LEISH)	50	3	659	Harim:Dana		

ABD=Acute Bloody Diarrhea  
UXD=Unexplained Death

AWD=Acute Watery Diarrhea  
FUO=Fever Of Unknown Origin

AFP=Acute Flaccid Paralysis  
MEA=suspected Measles

AJS=Acute Jaundice Syndrome  
MEN= suspected Meningitis

SARI= Severe Acute Respiratory Illness  
UCE=Unexplained Cluster Of Health Events

For any queries: please do not hesitate to contact the EWARN Unit at the ewarn@acu-sy.org

Epidemiological Weekly Bulletin- Syria EWARN- Epi week 18