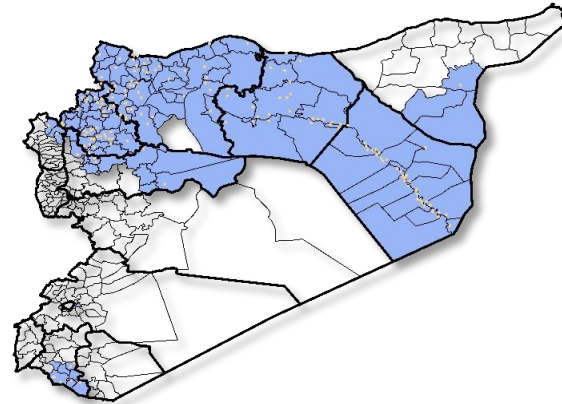


Highlights

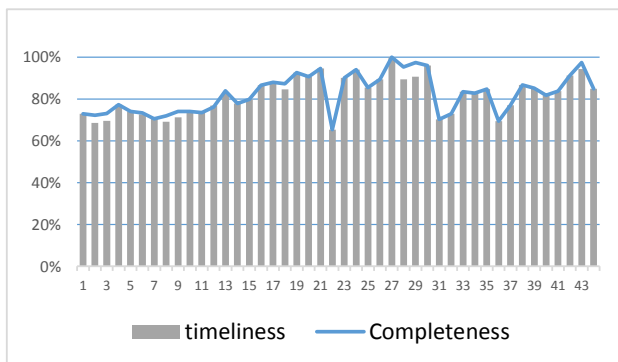
- A new level of EWARN team has been trained (field level officers) FLOs, the program has been expanded, and we add new health centers, and new areas .the target is cover more than 250 health center. •During Epi-week no 44 2014;84.9% (237/264) of the health facilities across 9 Governorates provided surveillance data 84.9% of reporting sites submitted the weekly reports on time.
- The total number of consultations reported during the reporting week was 77063 (including 40% children under the age of five) compared to 81382 consultations during week 43. The leading cause of morbidity was STF (Suspected typhoid fever), with over 919 cases (1.19%).
- 61 measles cases reported in this week,line list collected by name and age and district,started at week No 4.
- As of week 44, 4 new AFP (Acute Flaccid Paralysis) cases reported, 67 AFP cases reported in 2014 up to date. See weekly Poliomyelitis outbreak report for more details.
- Common disease reported under others were URTI (upper respiratory tract infection), acute bronchiolitis, whooping cough, acute diarrhea, Brucellosis and Cutaneous leishmaniasis.694 new leishmaniasis cases reported this week.

EWARN coverage

ACU EWARN covers 119 sub-District in 9 governorate



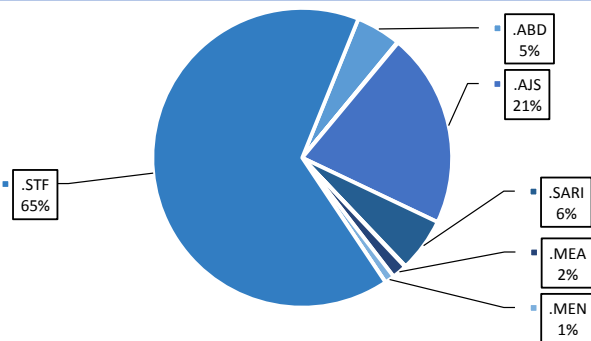
Completeness and timeliness



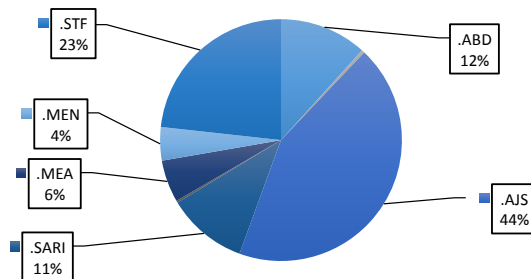
Number of sentinel sites and Total Number of Consultations per Governorate

Governorate	No of sentinel sites	Reporting Sentinels	No of consultations
ALEPPO	66	62	93.9%
AL-HASSAKA	16	16	100.0%
AR-RAQQA	55	41	74.5%
DEIR-EZ-ZOR	56	53	94.6%
HAMA	9	5	55.6%
IDLEB	56	41	73.2%
R.DAMASCUS	8	8	100.0%
DARAA	7	6	85.7%
LATTAKIA	6	5	83.3%
Grand total	279	237	84.9%

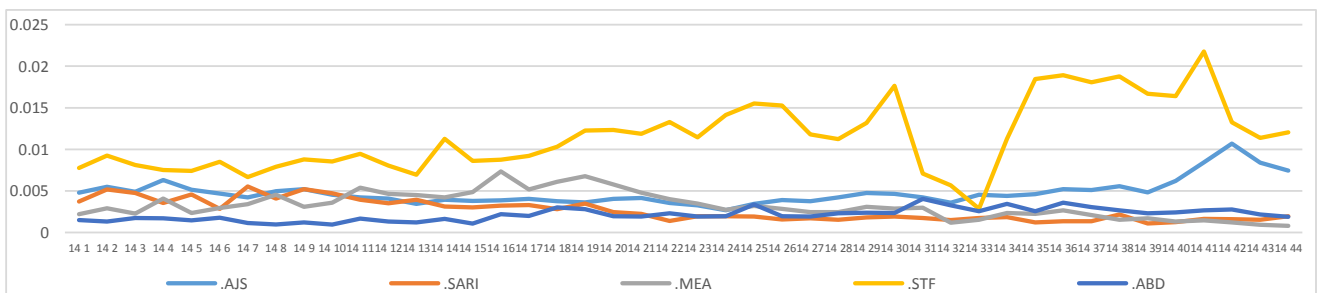
Percentage of EWARN Syndroms >5Y



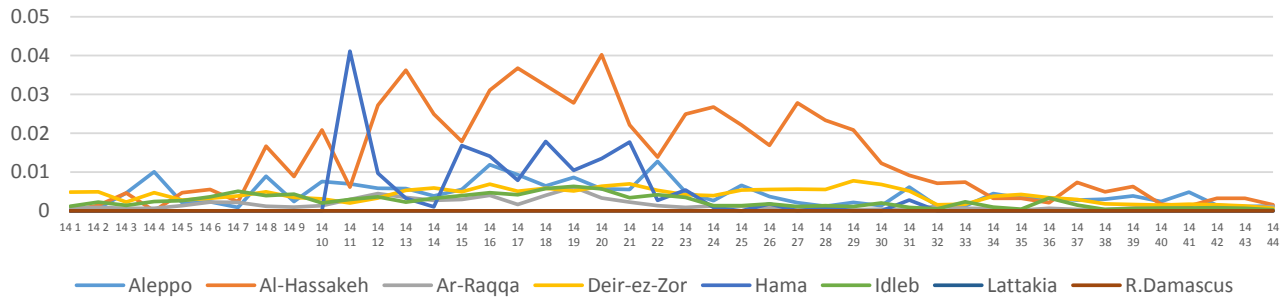
Percentage of EWARN Syndroms <5Y



Trends for Essential Priority Diseases in 9 Governorates – Epi week 47, 2013 to Epi week 44 2014



Proportional Morbidity of suspected Measles by Governorate, Epi Week 44



Number of cases (n) and propotional morbidity(%) by Epi week and essential priority Syndroms for governorate.Epi week 44

Governorate		week 43						week 44					
		STF	AJS	ABD	MEA	SARI	Total Consultations	STF	AJS	ABD	MEA	SARI	Total Consultations
Aleppo	NO.	81	131	34	22	27	19782	83	105	23	21	24	16702
	%	0.41%	0.66%	0.17%	0.11%	0.14%		0.50%	0.63%	0.14%	0.13%	0.14%	
Al-hassaka	NO.	3	4	12	6	3	1987	1	4	10	3	5	2062
	%	0.15%	0.20%	0.60%	0.30%	0.15%		0.05%	0.19%	0.48%	0.15%	0.24%	
Ar-rqqa	NO.	90	25	33	9	3	12786	97	12	34	13	2	12103
	%	0.70%	0.20%	0.26%	0.07%	0.02%		0.80%	0.10%	0.28%	0.11%	0.02%	
Deir-ez-zor	NO.	483	427	75	22	59	17867	438	361	63	12	66	17887
	%	2.70%	2.39%	0.42%	0.12%	0.33%		2.45%	2.02%	0.35%	0.07%	0.37%	
Hama	NO.	9	8	6	0.00%	11	1513	5	4	2	0.00%	15	1536
	%	0.59%	0.53%	0.40%	0.00%	0.73%		0.33%	0.26%	0.13%	0.00%	0.98%	
Idleb	NO.	197	40	11	11	20	18645	252	55	12	5	36	18212
	%	1.06%	0.21%	0.06%	0.06%	0.11%		1.38%	0.30%	0.07%	0.03%	0.20%	
Rural Damascus	NO.	28	30	0	3	0	2901	24	26	0	7	0	2975
	%	0.97%	1.03%	0.00%	0.10%	0.00%		0.81%	0.87%	0.00%	0.24%	0.00%	
Daraa	NO.	7	0	0	1	0	3773	11	0	0	0	0	3200
	%	0.19%	0.00%	0.00%	0.03%	0.00%		0.34%	0.00%	0.00%	0.00%	0.00%	
Lattakia	NO.	7	2	0	0	0	2128	8	2	0	0	0	2386
	%	0.33%	0.09%	0.00%	0.00%	0.00%		0.34%	0.08%	0.00%	0.00%	0.00%	
TOTAL	<5	128	382	107	47	67	30933	177	331	89	43	82	30511
	>5	777	285	64	27	56	48518	742	238	55	18	66	45805
Grand total	NO.	905	667	171	74	123	81382	919	569	144	61	148	77063
	%	1.11%	0.82%	0.21%	0.09%	0.15%		1.19%	0.74%	0.19%	0.08%	0.19%	

Alerts/Outbreak Investigated and Response Activity in Epi-week 44 2014

Disease	Alert threshold	#HF reach threshold	# Cases	The most affected Communities-Districts	Response Activity / Actions Taken*	comments
AFP	1	4	4	Ar-raqqa - Maadan Tal Abyad: Suluk Harim: Armanaz	Our DLOs collected the stool samples despite of the difficulty,our lab expert distributed special kits to collect stool samples.	
MEA	1	13	61	Menbij:Menbij Ar-raqqa : Ar-raqqa JisrAshShugur:Darkosh	Update the Line list for suspected cases decreases in cases's number within the last 3 weeks -Equipment for Measles Lab in (Atareb) is under processing	Slight and Gradual
AJS	5	25	569	Al Mayadin: Ashara Jabel Samaan	connection with DLO to explain the great increase in cases number compared with the same periods in previous season, cases increased steadily and it seems that the reasons	
STF	5	45	919	Al Mayadin: Ashara Harim: Darkosh	coordination with WASH sector and Relief International experts to supply chloride to water resources in some areas in Deir-ez-zor	
ABD	5	0	144	Deir-ez-zor:Deir-ez-zor Ar -raqqa : Ar-raqqa	appropriate antibiotic for bloody diarrha cases reported in the provinces (144 cases) mostly in the Ar- Raqqa - While water testing procedures did not take yet	
SARI	5	6	148	JisrAshShugur:Darkosh Deir-ez-zor:Khasham		
MEN	5	1	46	Menbij:Menbij AlMayadin:Al Mayadin	Slight decreases in cases's number within the last 3 weeks	
FUO	5	5	211	Rural Damascus:Kafr batna Al Mayadin: Dablan		
UCE (LIESH)	50	4	694	Al Ma'ra:Ma'ra Jabel Samaan : Aleppo		

ABD=Acute Bloody Diarrhea AWD=Acute Watery Diarrhea AFP=Acute Flaccid Paralysis AJS=Acute Jaundice Syndrome SARI= Severe Acute Respiratory Illness  
 UXD=Unexplained Death FUO=Fever Of Unknown Origin MEA=suspected Measles MEN= suspected Meningitis UCE=Unexplained Cluster Of Health Events