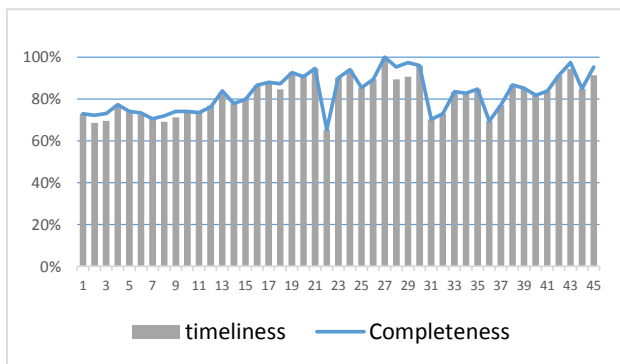


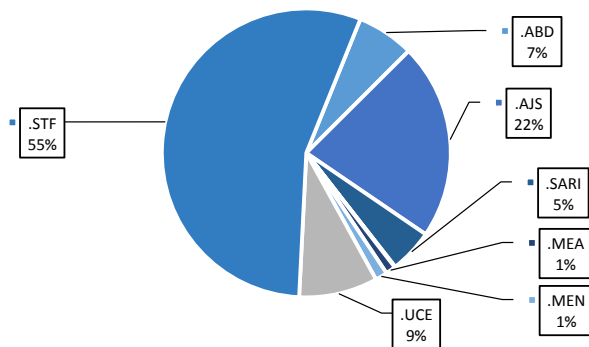
### Highlights

- A new level of EWARN team has been trained (field level officers) FLOs, the program has been expanded, and we add new health centers, and new areas .the target is cover more than 250 health center. •During Epi-week no 45 2014;93.4% (269/288) of the health facilities across 9 Governorates provided surveillance data , 88% of reporting sites submitted the weekly reports on time.
- The total number of consultations reported during the reporting week was 89646 (including 40% children under the age of five) compared to 77063 consultations during week 44 . The leading cause of morbidity was STF (Suspected typhoid fever), with over 854 cases (0.95%).
- 54 measles cases reported in this week,ther is a graduate decrease in cases number within the last few weeks , line list collected by name and age and distrect,started at week No 4.
- As of week 45, 5 new AFP (Acute Flaccid Paralysis) cases reported, 72 AFP cases reported in 2014 up to date. See weekly Poliomyelitis outbreak report for more details.
- Common disease reported under others were URTI (upper respiratory tract infection), acute bronchiolitis, whooping cough, acute diarrhea, Brucellosis and Cutaneous leishmaniasis. **936 new leishmaniasis cases reported this week. increasing number of Leishmaniasis cases in Al-Hassaka Governorates noted within the last 2 weeks.**

### Completeness and timeliness

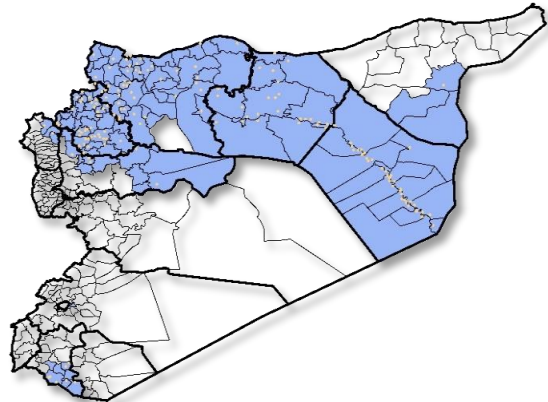


### Percentage of EWARN Syndromes >5Y



### EWARN coverage

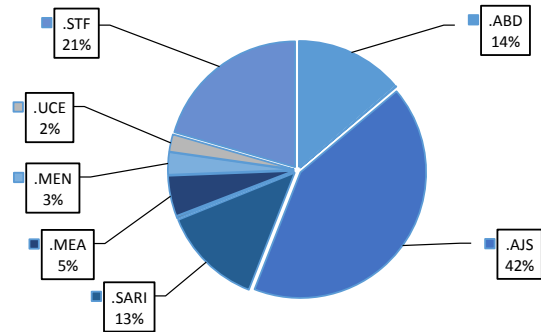
ACU EWARN covers 110 sub-District in 9 governorate



### Number of sentinel sites and Total Number of Consultations per Governorate

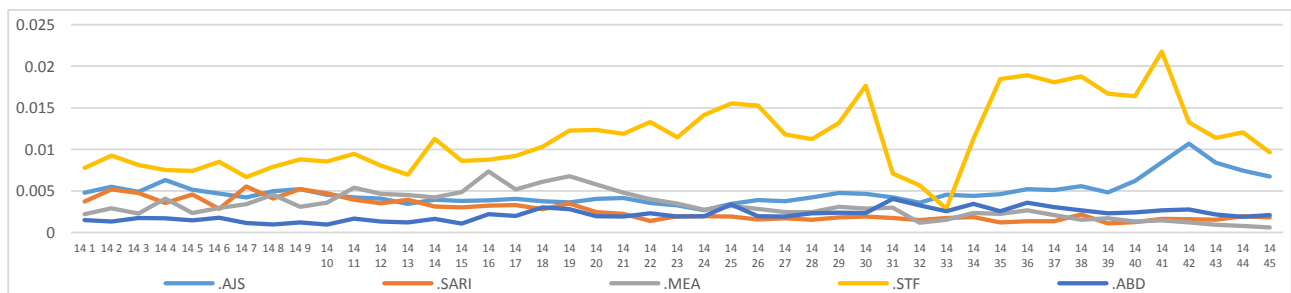
Governorate	No of sentinel	Reporting Sentinels	No of consultations
ALEPPO	73	73	19075
AL-HASSAKA	16	16	2143
AR-RAQQA	57	57	15098
DEIR-EZ-ZOR	56	53	18362
HAMA	5	5	1380
IDLEB	59	52	24594
R.DAMASCUS	8	0	0
DARAA	8	8	6784
LATTAKIA	6	5	2210
<b>Grand total</b>	<b>288</b>	<b>269</b>	<b>89646</b>

### Percentage of EWARN Syndromes <5Y



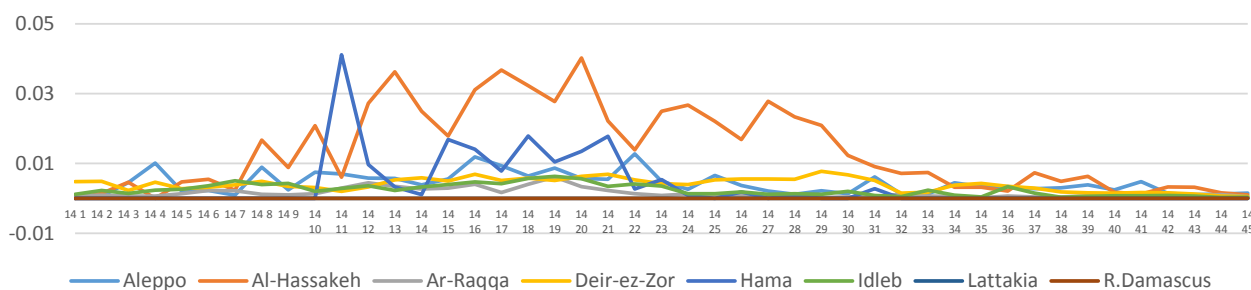
### Trends for Essential Priority Diseases in 9 Governorates – Epi week 47, 2013 to Epi week

45 2014



Proportional Morbidity of suspected Measles by Governorate, Epi Week

45



Number of cases (n) and propotional morbidity(%) by Epi week and essential priority Syndroms for governorate.Epi week 45

Governorate		week 44					Total Consultations	week 45					Total Consultations
		STF	AJS	ABD	MEA	SARI		STF	AJS	ABD	MEA	SARI	
Aleppo	NO.	83	105	23	21	24	16702	95	107	26	29	17	19075
	%	0.50%	0.63%	0.14%	0.13%	0.14%		0.50%	0.56%	0.14%	0.15%	0.09%	
Al-hassaka	NO.	1	4	10	3	5	2062	2	6	13	2	8	2143
	%	0.05%	0.19%	0.48%	0.15%	0.24%		0.09%	0.28%	0.61%	0.09%	0.37%	
Ar-rqqa	NO.	97	12	34	13	2	12103	105	22	55	7	3	15098
	%	0.80%	0.10%	0.28%	0.11%	0.02%		0.70%	0.15%	0.36%	0.05%	0.02%	
Deir-ez-zor	NO.	438	361	63	12	66	17887	423	399	72	9	69	18362
	%	2.45%	2.02%	0.35%	0.07%	0.37%		2.30%	2.17%	0.39%	0.05%	0.38%	
Hama	NO.	5	4	2	0.00%	15	1536	6	6	1	0.00%	9	1380
	%	0.33%	0.26%	0.13%	0.00%	0.98%		0.43%	0.43%	0.07%	0.00%	0.65%	
Idleb	NO.	252	55	12	5	36	18212	204	56	18	7	55	24594
	%	1.38%	0.30%	0.07%	0.03%	0.20%		0.83%	0.23%	0.07%	0.03%	0.22%	
Rural Damascus	NO.	24	26	0	7	0	2975	0	0	0	0	0	0
	%	0.81%	0.87%	0.00%	0.24%	0.00%		0.00%	0.00%	0.00%	0.00%	0.00%	
Daraa	NO.	11	0	0	0	0	3200	14	0	1	0	0	6784
	%	0.34%	0.00%	0.00%	0.00%	0.00%		0.21%	0.00%	0.01%	0.00%	0.00%	
Lattakia	NO.	8	2	0	0	0	2386	5	3	0	0	0	2210
	%	0.34%	0.08%	0.00%	0.00%	0.00%		0.23%	0.14%	0.00%	0.00%	0.00%	
TOTAL	<5	177	331	89	43	82	30511	157	322	105	40	99	37145
	>5	742	238	55	18	66	45805	697	277	81	14	62	51588
Grand total	NO.	919	569	144	61	148	77063	854	599	186	54	161	89646
	%	1.19%	0.74%	0.19%	0.08%	0.19%		0.95%	0.67%	0.21%	0.06%	0.18%	

Alerts/Outbreak Investigated and Response Activity in Epi-week 45 2014

Disease	Alert threshold	#HF reach threshold	# Cases	The most affected Communities-Districts	Response Activity / Actions Taken*	comments
AFP	1	5	5	Ar-raqqa: Ar-raqqa Menbij - Ain Alarab Harim: Dana	preparations for 4th ERC and quarter meeting for DLOs next month are under process	
MEA	1	36	54	Menbij : Menbij Abu Kamal: Abu Kamal Ar-raqqa: Ar-raqqa	Update the Line list for suspected cases decreas in cases`s number within the last few weeks - Equipment for Measles Lab in (Atareb) is under processing	
AJS	5	35	599	AlMayadin: Ashara Jebel Saman	connection with DLO to explain the great increase in cases number compared with the same periods in previous season, coordination with WASH sector and Relief International	
STF	5	60	854	AlMayadin: Ashara Harim: Salqin	experts to supply chloride to water resources in some areas in Deir-ez-zor	
ABD	5	5	186	AlMayadin: Ashara Ar-raqqa: Maadan	Appropriate antibiotic for bloody diarrhea cases reported in the provinces (186 cases) mostly in the Ar- Raqqa - While	
SARI	5	6	161	Jisr Ashshugur:Darkosh Deir-ez-zor :Khasham		
MEN	5	0	10	Ar-raqqa:Ar-raqqa Tal Abyad: Tal Abyad	Slight decreas in cases`s number within the last few weeks	
(LEISH ) UCE	50	7	936	Maarrat Annuman: Khan Jebel Saman		

ABD=Acute Bloody Diarrhea  
UXD=Unexplained Death

AWD=Acute Watery Diarrhea  
FUO=Fever Of Unknown Origin

AFP=Acute Flaccid Paralysis  
MEA=suspected Measles

AJS=Acute Jaundice Syndrome  
MEN= suspected Meningitis

SARI= Severe Acute Respiratory  
UCE=Unexplained Cluster Of Health

For any queries: please do not hesitate to contact the EWARN Unit at the ewarn@acu-sy.org

Epidemiological Weekly Bulletin- Syria EWARN- Epi week 18