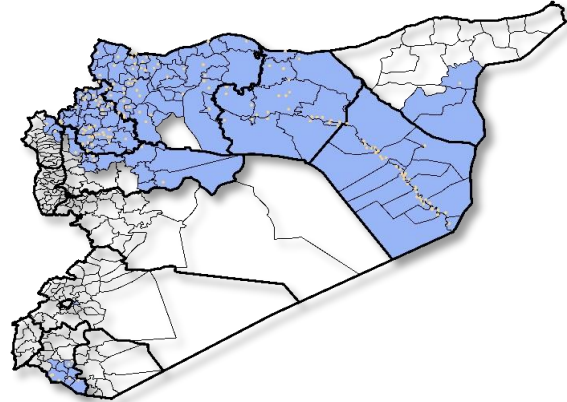


Highlights

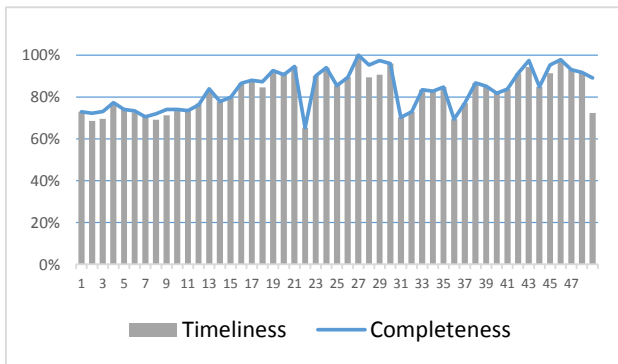
- The Symposium , 4th ERC and Quarterly meeting for DLOs were held between 3rd -7th of December, for more details see the Extension.
- A new level of EWARN team has been trained (field level officers) FLOs, the program has been expanded, and we add new health centers, and new areas .the target is cover more than 300 health center.
- During Epi-week no 49 2014;88,8% (270/304) of the health facilities across 9 Governorates provided surveillance data 72.3% of reporting sites submitted the weekly reports on time.
- The total number of consultations reported during the reporting week was 91666 (including 40% children under the age of five) compared to 90719 consultations during week 48. The leading cause of morbidity was STF (Suspected typhoid fever), with over 754 cases (0.82%).
- 21 measles cases reported in this week, most reported cases are enrolled in updated line list , there is a clear decrease in total number of suspected cases within the last few weeks.
- As of week 49 , 5 new AFP (Acute Flaccid Paralysis) cases reported, 89 AFP cases reported in 2014 up to date. See weekly Poliomyelitis outbreak report for more details.
- Common disease reported under others were URTI (upper respiratory tract infection), chicken box, acute diarrhea, Brucellosis and Cutaneous leishmaniasis. 1129 new leishmaniasis cases reported this week.

EWARN coverage

ACU EWARN covers 110 sub-District in 9 governorate



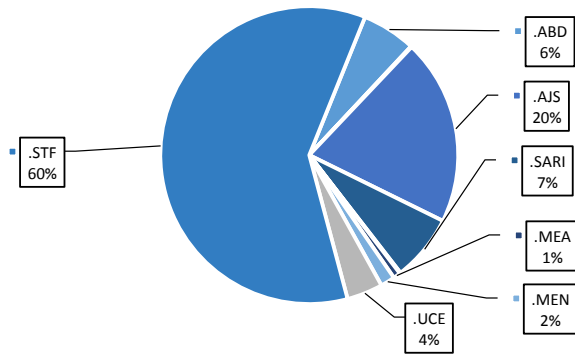
Completeness and timeliness



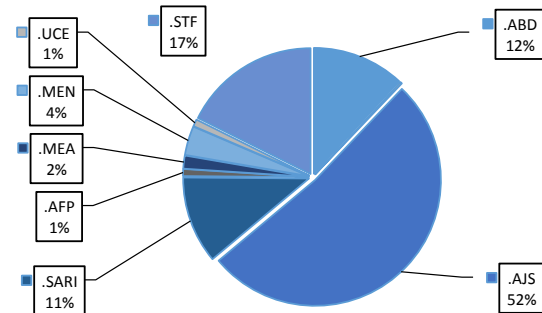
Number of sentinel sites and Total Number of Consultations per Governorate

Governorate	No of sentinel	Reporting Sentinel	No of consultations
ALEPPO	79	57	72.2%
AL-HASSAKA	16	14	87.5%
AR-RAQQA	63	63	100.0%
DEIR-EZ-ZOR	57	56	98.2%
HAMA	5	5	100.0%
IDLEB	62	56	90.3%
R.DAMASCUS	8	8	100.0%
DARAA	8	7	87.5%
LATTAKIA	6	4	66.7%
Grand total	304	270	88.8%

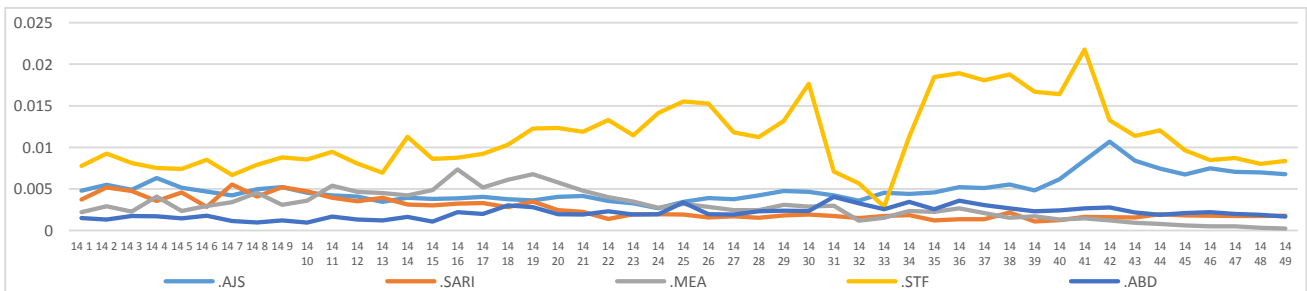
Percentage of EWARN Syndromes >5Y



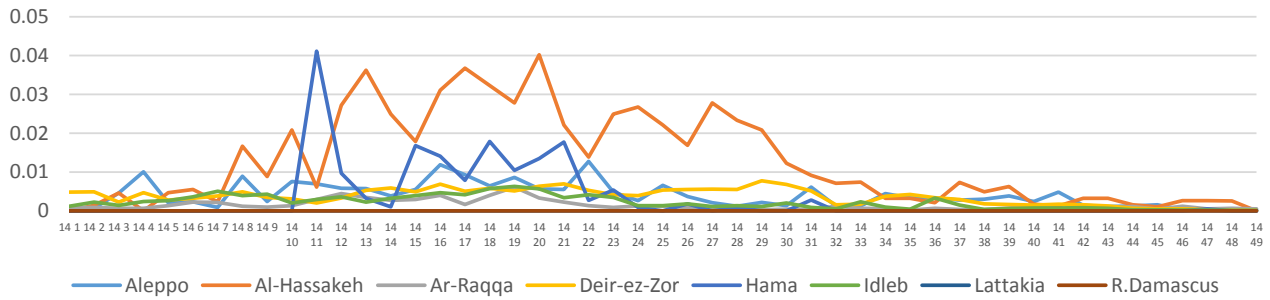
Percentage of EWARN Syndromes <5Y



Trends for Essential Priority Diseases in 9 Governorates – Epi week 47, 2013 to Epi week 49 2014



Proportional Morbidity of suspected Measles by Governorate, Epi Week 49



Number of cases (n) and propotional morbidity(%) by Epi week and essential priority Syndroms for governorate.Epi week 49

Governorate		week 48					Total Consultations	week 49					Total Consultations
		STF	AJS	ABD	MEA	SARI		STF	AJS	ABD	MEA	SARI	
Aleppo	NO.	66	129	51	7	13	20740	45	100	31	7	2	17487
	%	0.32%	0.62%	0.25%	0.03%	0.06%		0.26%	0.57%	0.18%	0.04%	0.01%	
Al-hassaka	NO.	1	9	8	5	16	2282	1	5	13	0	14	1798
	%	0.04%	0.39%	0.35%	0.22%	0.70%		0.06%	0.28%	0.72%	0.00%	0.78%	
Ar-rqqa	NO.	75	32	40	10	3	14865	80	23	36	8	4	16058
	%	0.50%	0.22%	0.27%	0.07%	0.02%		0.50%	0.14%	0.22%	0.05%	0.02%	
Deir-ez-zor	NO.	358	364	55	3	68	18349	469	385	51	2	84	18908
	%	1.95%	1.98%	0.30%	0.02%	0.37%		2.48%	2.04%	0.27%	0.01%	0.44%	
Hama	NO.	11	8	5	0.00%	17	1865	14	9	11	0.00%	17	2006
	%	0.59%	0.43%	0.27%	0.00%	0.91%		0.70%	0.45%	0.55%	0.00%	0.85%	
Idleb	NO.	175	56	9	3	39	23844	90	41	9	4	40	25013
	%	0.73%	0.23%	0.04%	0.01%	0.16%		0.36%	0.16%	0.04%	0.02%	0.16%	
Rural Damascus	NO.	23	27	0	1	0	3530	34	40	0	0	0	4029
	%	0.00%	0.00%	0.00%	0.00%	0.00%		0.84%	0.99%	0.00%	0.00%	0.00%	
Daraa	NO.	7	0	0	0	0	3306	14	0	1	0	0	4234
	%	0.21%	0.00%	0.00%	0.00%	0.00%		0.33%	0.00%	0.02%	0.00%	0.00%	
Lattakia	NO.	4	2	0	0	0	1938	7	6	0	0	0	2133
	%	0.21%	0.10%	0.00%	0.00%	0.00%		0.33%	0.28%	0.00%	0.00%	0.00%	
TOTAL	<5	112	442	116	22	92	36655	137	402	92	13	87	37073
	>5	608	185	52	7	64		617	207	60	8	74	
Grand total	NO.	720	627	168	29	156	90719	754	609	152	21	161	91666
	%	0.79%	0.69%	0.19%	0.03%	0.17%		0.82%	0.66%	0.17%	0.02%	0.18%	

Alerts/Outbreak Investigated and Response Activity in Epi- 49 2014

Disease	Alert threshold	#HF reach threshold	# Cases	The most affected Communities-Districts	Response Activity / Actions Taken*	comments
AFP	1	5	5	Jebel Saman: Daret Azza A'zaz: Shamarin Menbij: Abu Qalqal- Menbij Kafr zeita: Latmana	4th ERC and Quarterly meeting for DLOs were held between 5 -7th of December, for more details see the Extension.	
MEA	1	17	21	AlBab : Dayr Hafir Ar-Raqqa: Ar-Raqqa	Most reported cases enrolled in updated Line list Decrease in Cases number within the last few weeks	
AJS	5	66	609	Al Mayadin: Ashara Jebel Saman: Zarbah	High numbers of AJS cases still recorded in AlMayadin within the last 2 months	
STF	5	71	754	Al Mayadin: Ashara Deir ez zour : Sur	Liquid chloride which provided by Syrian Arab Red Crescent, as also powder chloride provided by Relief international were added to some water stations in Deir ez-zor	
ABD	5	1	152	Al Mayadin: Al Mayadin Jebel Saman: Tall Ed-Daman		
SARI	5	9	161	Jisr Ashshugur :Darkosh Abu Kamal : Hajin		
MEN	5	0	45	Al Mayadin: Al Mayadin Abu Kamal : Hajin		
(LEISH) UCE	50	3	1129	AlHasakeh: Hole Tal Abyad: Suluk	Coordination with MENTOR Initiative for weekly evaluation of cases number, survey in endemic areas, and proper response via medication supplement, management plans, training the staffs and new staff employment	

ABD=Acute Bloody Diarrhea AWD=Acute Watery Diarrhea AFP=Acute Flaccid Paralysis AJS=Acute Jaundice Syndrome SARI= Severe Acute Respiratory Illness
 UXD=Unexplained Death FUU= Fever Of Unknown Origin MEA=suspected Measles MEN= suspected Meningitis UCE=Unexplained Cluster Of Health Events