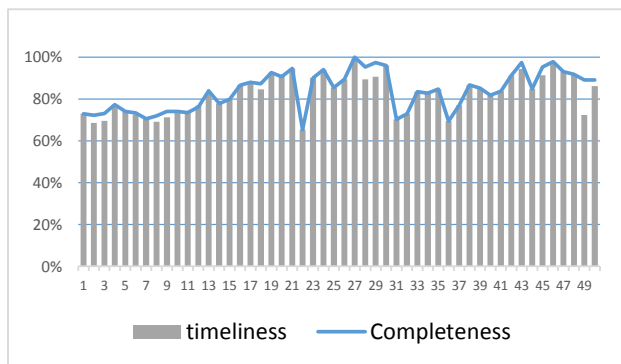


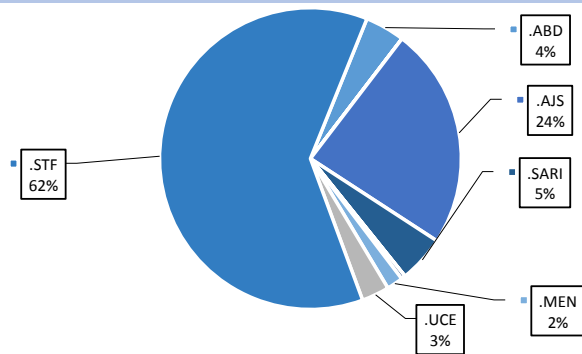
Highlights

- 4th ERC and Quarterly meeting for DLOs were held between 5-7th of December
- ERC Classification results: 1 Compatible case in Deir ez zor - 6 Discarded cases - 2 cases needed more details to be classified
- During Epi-week no 50 2014;86.3% (271/314) of the health facilities across 9 Governorates provided surveillance data 83.4% of reporting sites submitted the weekly reports on time.
- The total number of consultations reported during the reporting week was 86100 (including 40% children under the age of five) compared to 91666 consultations during week 49. The leading cause of morbidity was STF (Suspected typhoid fever), with over 721 cases (0.84%).
- 15 measles cases reported in this week, most reported cases are enrolled in updated line list , there is a clear decrease in total number of suspected cases within the last few weeks.
- As of week 50 , 3 new AFP (Acute Flaccid Paralysis) cases reported, 92 AFP cases reported in 2014 up to date. See weekly Poliomyelitis outbreak report for more details.
- Common disease reported under others were URTI (upper respiratory tract infection), chicken box, acute diarrhea, Brucellosis and Cutaneous leishmaniasis, 1280 new leishmaniasis cases reported this week.
- An outbreak of Lice and Scabies reported in Aleppo city, for more details see the Extension

Completeness and Timeliness

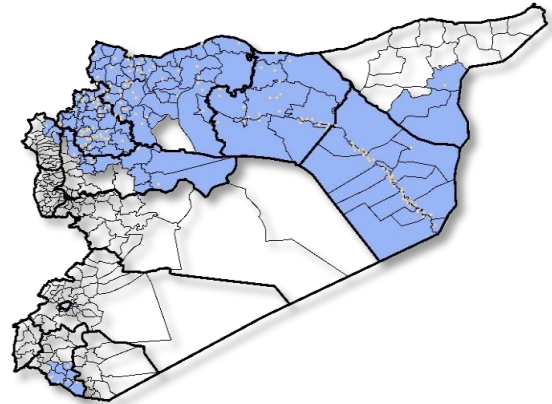


Percentage of EWARN Syndromes >5Y



EWARN coverage

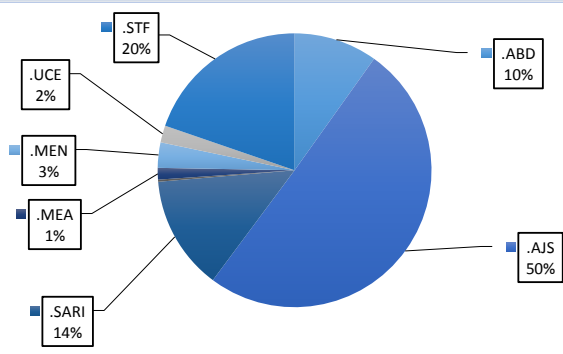
ACU EWARN covers 110 sub-District in 9 governorate



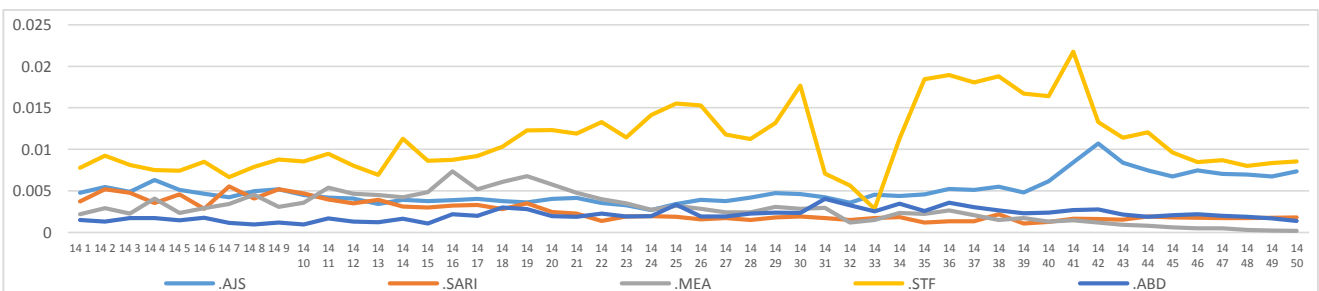
Number of sentinel sites and Total Number of Consultations per Governorate

Governorate	No of sentinel	Reporting Sentinels	No of consultations
ALEPPO	79	51	15285
AL-HASSAKA	16	15	1997
AR-RAQQA	66	64	16398
DEIR-EZ-ZOR	59	55	18773
HAMA	9	5	1922
IDLEB	62	60	21516
R.DAMASCUS	9	9	4182
DARAA	8	7	3982
LATAKIA	6	5	2045
Grand total	314	271	86100

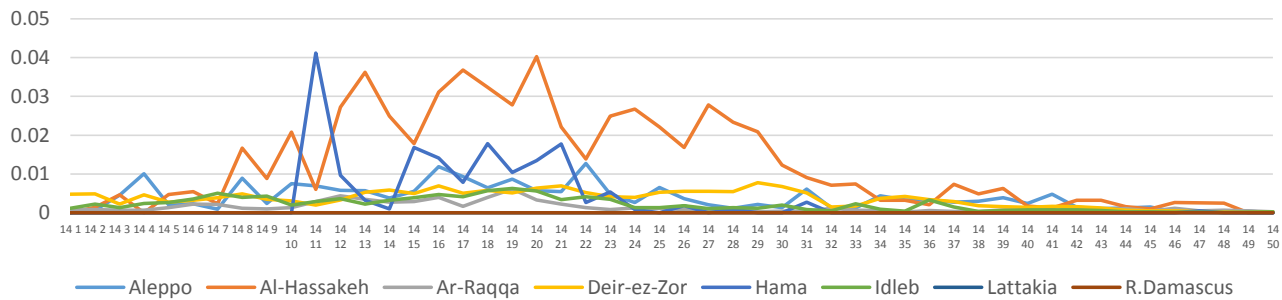
Percentage of EWARN Syndromes <5Y



Trends for Essential Priority Diseases in 9 Governorates – Epi week 47, 2013 to Epi week 50 2014



Proportional Morbidity of suspected Measles by Governorate, Epi Week 50



Number of cases (n) and propotional morbidity(%) by Epi week and essential priority Syndroms for governorate.Epi week 50

Governorate		week 49						week 50					
		STF	AJS	ABD	MEA	SARI	Total Consultations	STF	AJS	ABD	MEA	SARI	Total Consultations
Aleppo	NO.	45	100	31	7	2	17487	34	84	12	0	3	15285
	%	0.26%	0.57%	0.18%	0.04%	0.01%		0.22%	0.55%	0.08%	0.00%	0.02%	
Al-hassaka	NO.	1	5	13	0	14	1798	1	7	8	0	14	1997
	%	0.06%	0.28%	0.72%	0.00%	0.78%		0.05%	0.35%	0.40%	0.00%	0.70%	
Ar-rqqa	NO.	80	23	36	8	4	16058	63	29	19	5	0	16398
	%	0.50%	0.14%	0.22%	0.05%	0.02%		0.38%	0.18%	0.12%	0.03%	0.00%	
Deir-ez-zor	NO.	469	385	51	2	84	18908	446	391	58	5	92	18773
	%	2.48%	2.04%	0.27%	0.01%	0.44%		2.38%	2.08%	0.31%	0.03%	0.49%	
Hama	NO.	14	9	11	0.00%	17	2006	9	13	8	0.00%	18	1922
	%	0.70%	0.45%	0.55%	0.00%	0.85%		0.47%	0.68%	0.42%	0.00%	0.94%	
Idleb	NO.	90	41	9	4	40	25013	110	56	13	5	27	21516
	%	0.36%	0.16%	0.04%	0.02%	0.16%		0.51%	0.26%	0.06%	0.02%	0.13%	
Rural Damascus	NO.	34	40	0	0	0	4029	38	35	0	0	0	4182
	%	0.84%	0.99%	0.00%	0.00%	0.00%		0.91%	0.84%	0.00%	0.00%	0.00%	
Daraa	NO.	14	0	1	0	0	4234	14	3	0	0	0	3982
	%	0.33%	0.00%	0.02%	0.00%	0.00%		0.35%	0.08%	0.00%	0.00%	0.00%	
Lattakia	NO.	7	6	0	0	0	2133	6	2	0	0	0	2045
	%	0.33%	0.28%	0.00%	0.00%	0.00%		0.29%	0.10%	0.00%	0.00%	0.00%	
TOTAL	<5	137	402	92	13	87	37073	158	403	79	11	108	36361
	>5	617	207	60	8	74	53084	563	217	39	4	46	48078
Grand total	NO.	754	609	152	21	161	91666	721	620	118	15	154	86100
	%	0.82%	0.66%	0.17%	0.02%	0.18%		0.84%	0.72%	0.14%	0.02%	0.18%	

Alerts/Outbreak Investigated and Response Activity in Epi-week 50 2014

Disease	Alert threshold	#HF reach threshold	# Cases	The most affected Communities-Districts	Response Activity / Actions Taken*	comments
AFP	1	3	3	Menbij: Qatma Menbij: Menbij Menbij: Abu Kahf 1	Quarterly meeting for DLOs were held on 6 - 7th of December, included: training for AFP case definition , guidelines, correct sampling, communication skills, AFP surveillance indicators in each district, and a review DLOs work challenges, difficulties and suggestions for proper solutions	
MEA	1	13	15	Tall Abyad : Ein Issa Abu Kama	Most reported cases enrolled in updated Line list Decrease in Cases number within the last few weeks	
AJS	5	40	620	Al Mayadin: Ashara Al Bab : Dayr Hafir	High numbers of AJS cases still recorded in AlMayadin within the last 2 months	
STF	5	46	721	Al Mayadin: Ashara Harim: Salqin	Liquid chloride which provided by Syrian Arab Red Crescent, as also powder chloride provided by Relief international were added to some water stations in Deir ez-zor	
ABD	5	2	118	Al Mayadin: Al Mayadin Jebel Saman: Tall Ed-Daman		
SARI	5	9	154	Jisr Ashshugur :Darkosh Abu Kamal : Abu Kamal		
MEN	5	0	40	Al Mayadin: Al Mayadin Tall Abyad : Tall Abyad		
(LEISH) UCE	50	4	1280	Tal Abyad: Suluk Al Hasakah:Shadadah	Coordination with MENTOR Initiative for weekly evaluation of cases number, survey in endemic areas, and proper response via medication supplement , management plans, training the staffs and new staff employment	
(Lice and Scabies) UCE	1 Cluster			Aleppo city :south and east neighborhoods - east rural	some NGOs study the possibilities to provide medication - to know the details see the extension	

ABD=Acute Bloody Diarrhea AWD=Acute Watery Diarrhea AFP=Acute Flaccid Paralysis AJS=Acute Jaundice Syndrome SARI= Severe Acute Respiratory Illness
 UXD=Unexplained Death FUO=Fever Of Unknown Origin MEA=suspected Measles MEN= suspected Meningitis UCE=Unexplained Cluster Of Health Events