

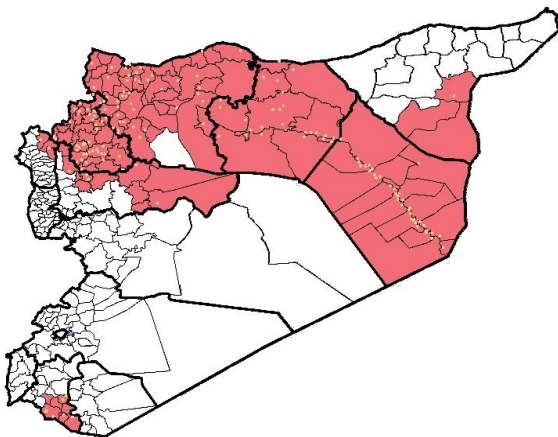
**Highlights**

- Early warning Alert and response network (EWARN) was launched on July 2013 in 61 district for 7 governorates, and the expansion phase has started on September 2014 to cover besieged areas in Rural Damascus (east Gota) and Daraa governorate . Ongoing on site trainings to improve weekly reporting and immediate notification are underway in all governorates.
- More than 140 (field level officers) FLOs have been added to cover more than 335 centers.
- During Epi-week no 1 2015; 95.5% (320/335) of the health facilities across 9 Governorates provided surveillance data 93.4% of reporting sites submitted the weekly reports on time.
- The total number of consultations reported during the reporting week was 102944 (including 40% children under the age of five) compared to 100316 consultations during week 52, 2014.
- **The leading cause of morbidity was AJS (Acute Jaundice Syndrome), with over 689 cases, the highest alerts reported was in Al Mayadin district (10 alerts), remarkable high numbers of cases still reported within the last 3 months.**

- 29 measles cases reported in this week, most new cases enrolled in updated line list, the highest alerts was reported in Menbij district (5 alerts).
- As of week 1, 3 AFP (Acute Flaccid Paralysis) cases were reported in: Menbij – Jarablus and - Ma`arrat An`Numan districts , 104 AFP cases reported since the beginning of 2014 up to date. See weekly Poliomyelitis outbreak report for more details.
- 221 cases of SARI reported in Epi Week 1, with clear increase of cases within the last 3 weeks.
- Common disease reported under others were URTI (upper respiratory tract infection), chicken box, acute diarrhea, Brucellosis and Cutaneous leishmaniasis.
- 1697 new leishmaniasis cases reported this week, the highest alerts reported were in 3 districts: Al Hasakeh (3 alerts) – Jebel Saman (3 alerts) – Tall Abyad (1 alert).
- An outbreak of Lice and Scabies reported in Aleppo city and east rural, ACU is cooperating with many NGOs to implement proper response plan to control the outbreak.
- **Four cases of Malaria have been reported in Ar Raqqa, for more details**

**EWARN Coverage**

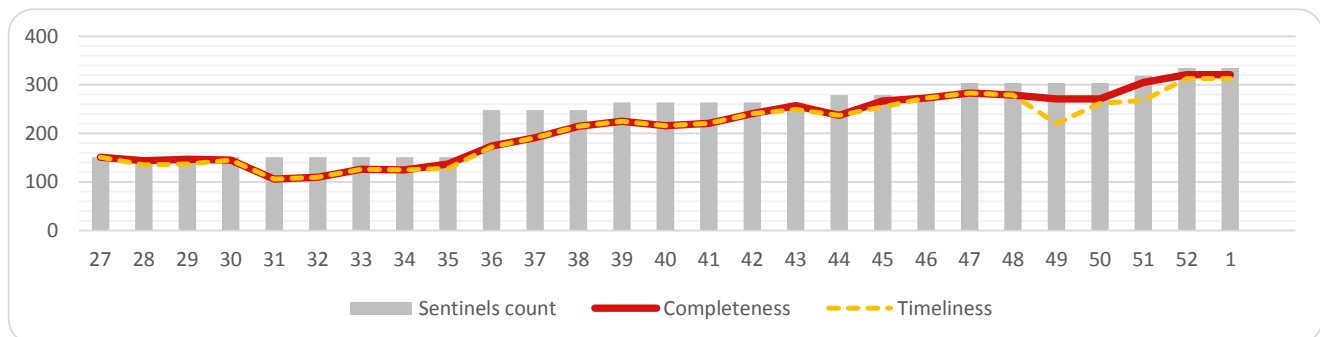
ACU covers 110 sub districts in 9 governorates



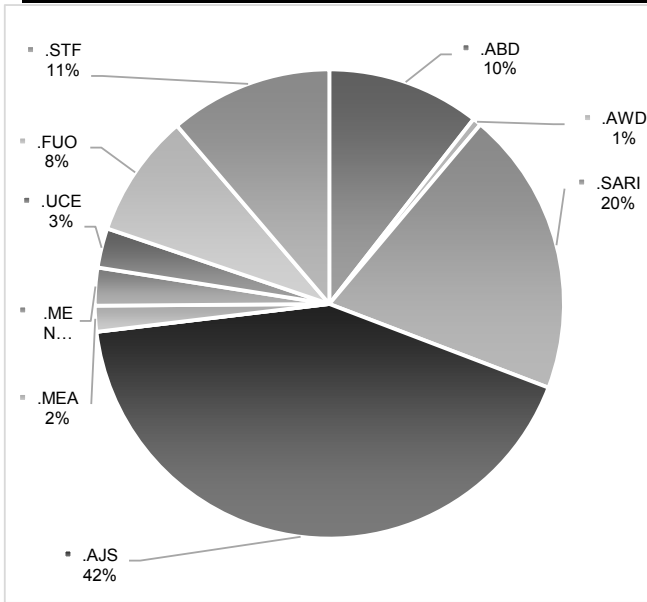
**Number of sentinel sites and Total Number of Consultations**

Governorate	# of sentinel sites	Reporting Sentinel sites	% of reporting	# of consultations
Aleppo	95	95	100.0%	26549
Al-Hassakeh	17	17	100.0%	2218
ArRaqqa	68	64	94.1%	15614
Daraa	8	6	75.0%	4252
DeirAzZor	58	57	98.3%	18556
Hama	16	12	75.0%	4559
Idleb	58	56	96.6%	24882
Lattakia	6	5	83.3%	1942
R.Damascus	9	8	88.9%	4372
<b>Grand total</b>	<b>335</b>	<b>320</b>	<b>95.5%</b>	<b>102944</b>

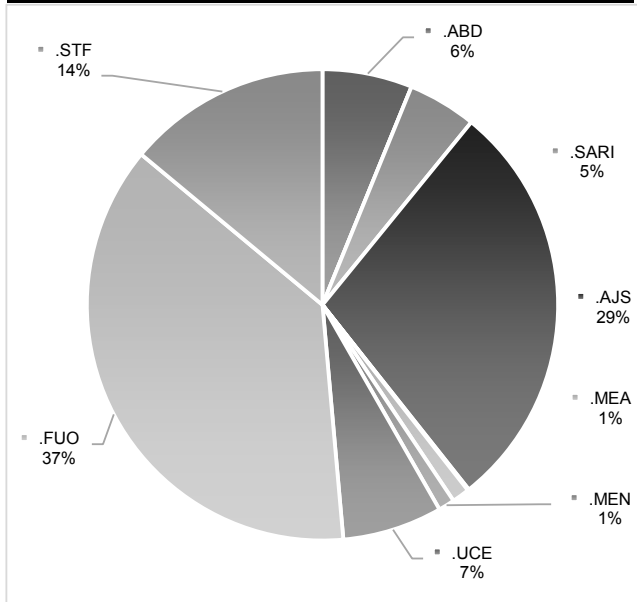
**Completeness and Timeliness**



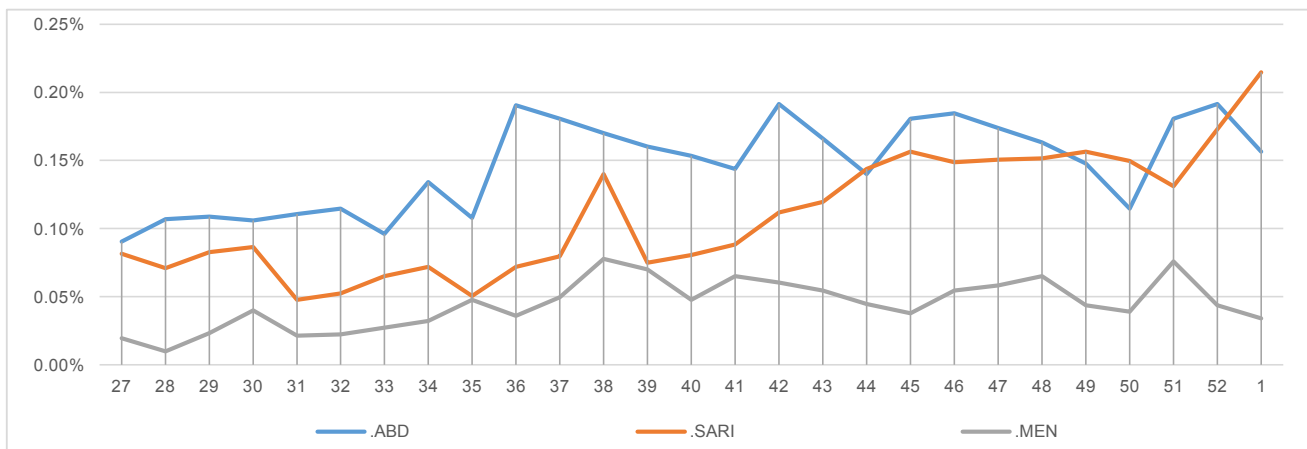
**Percentage of EWARN Syndromes >5Y**



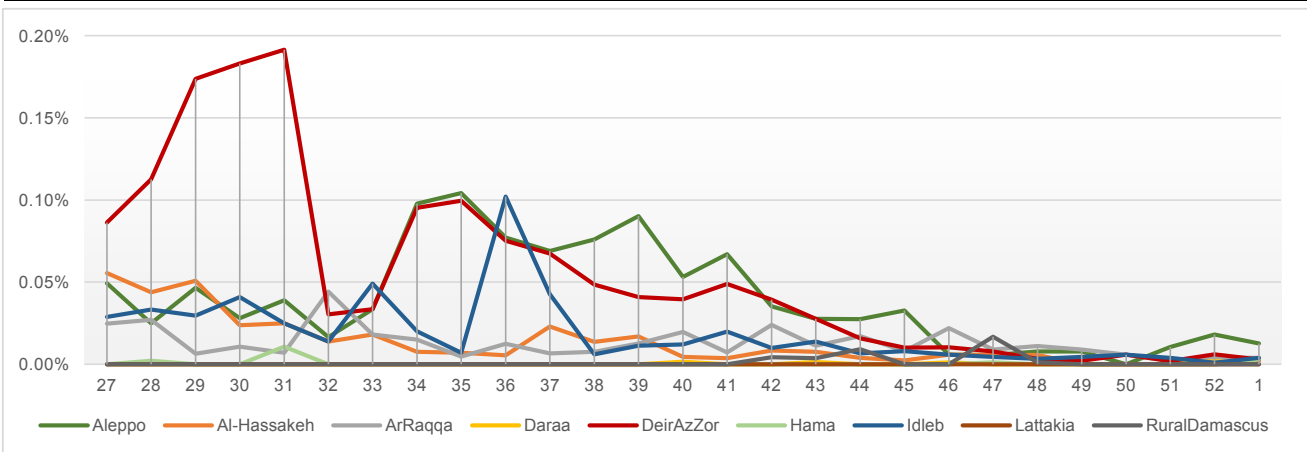
**Percentage of EWARN Syndromes <5Y**



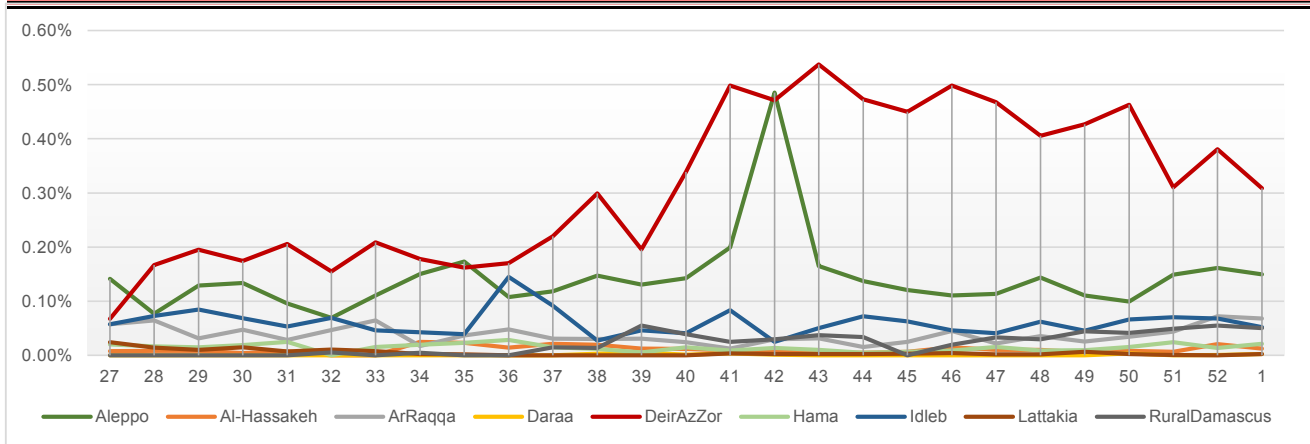
**Trends for essential priority diseases in 9 governorates – Epi week 27-2014 to Epi week 1 - 2015**



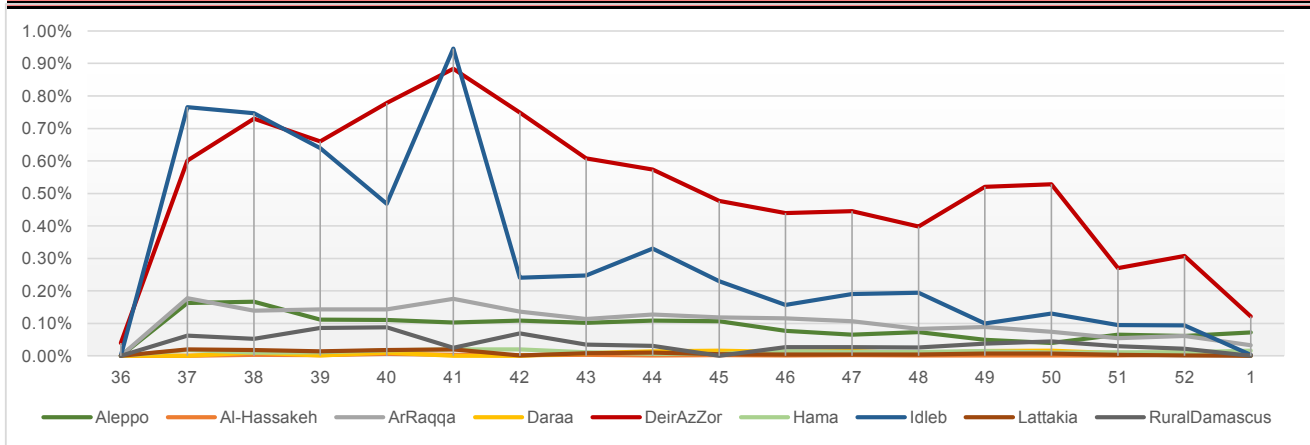
**Proportional Morbidity of suspected Measles by Governorate, Epi Week 1 - 2015**



**Proportional Morbidity of suspected AJS by Governorate, Epi Week 1 - 2015**



**Proportional Morbidity of suspected STF by Governorate, Epi Week 1 - 2015**



**Number of cases that EWARN observes by age & geographical area for Epi week 1 - 2015**

Governorate	ABD	AWD	AJS	SARI	AFP	MEA	MEN	UCE	UXD	FUO	LEISH	STF	OTHER	TOTAL
Aleppo	< 5	12	0	63	3	0	7	3	9	1	17	141	7	10085
	> 5	16	0	91	4	1	6	9	26	0	53	413	67	15515
AlHasakeh	< 5	4	0	11	2	0	1	0	0	0	0	120	1	693
	> 5	5	0	2	3	0	1	0	0	0	6	194	3	1172
ArRaqqqa	< 5	19	2	36	0	0	2	3	4	0	2	85	4	6525
	> 5	27	0	34	0	0	2	2	7	0	45	224	30	8561
Daraa	< 5	0	3	2	0	0	0	0	0	0	6	0	0	1713
	> 5	0	0	1	0	0	0	0	0	0	7	0	0	2520
DeirEzZor	< 5	44	0	207	69	0	2	14	3	0	27	74	75	10360
	> 5	13	0	111	29	0	1	1	1	0	215	94	50	7166
Hama	< 5	5	0	11	21	0	0	0	0	0	0	73	6	1163
	> 5	4	0	11	10	0	3	1	6	0	5	137	11	3092
Idleb	< 5	5	0	22	71	0	3	2	7	0	14	28	2	8202
	> 5	7	0	32	9	0	1	0	35	0	81	114	2	16245
Lattakia	< 5	0	0	0	0	0	0	0	0	0	0	0	0	669
	> 5	0	0	3	0	0	0	0	0	0	0	0	0	1270
Rural Damascus	< 5	0	0	5	0	0	0	0	0	0	6	0	0	1232
	> 5	0	0	47	0	0	0	0	5	0	25	0	0	3052
TOTAL	< 5	89	5	357	166	0	15	22	23	1	72	521	95	40642
	> 5	72	0	332	55	1	14	13	80	0	437	1176	163	58593
Grand total		161	5	689	221	1	29	35	103	1	509	1697	258	99235

**Number and distribution of alerts reported in Epi-week**
**1 - 2015**

Disease	Alert threshold	#HF reach threshold	# Cases	The affected Communities-Districts
AFP	1	3	3	Menbij:Al Khafsa 1- Jarablus : Ghandorah 1 - Ma'arrat An'Numan: Kafr Nobol 1
MEA	1	22	29	Menbij 5 - Jarablus 2 - AsSuqaylabiyah 2- Deir ez zor 2 - Ar Raqqa 2-Ariha 1- Jisr AshShugur1 - Ain Alarab 1- Quamishli1 - Al Hasakeh1 - Al Bab1- Al Mayadin 1- Harim1 - Jebel Saman 1
AJS	5	50	689	AlMayadin : 10 - Abu Kamal 9 - Deir ez zor 7 - Rural Damascus: 6 - Jebel Saman 6 - Al Bab : 4 - Azaz 3 - Ar Raqqa 2 Tall Abyad 1 - Jisr AshShugur 1 - Al Hasakeh 1
STF	5	34	509	AlMayadin 14 - Deir ez zor 4 - Harim 4 - Rural Damascus 4 - Ar Raqqa 3 - Daraa 2- Abu Kamal 1 - Idleb 1 - Al Bab 1
ABD	5	3	161	AlMayadin 1 - Ar Raqqa 1 - Deir ez zor 1
SARI	5	13	221	Abu Kamal 5 - Harim 4 - Jisr AshShugur 2 - AsSuqaylabiyah 1 - AsSalamiyeh 1
MEN	5	1	35	Al Mayadin 1
(LEISH) UCE	50	3	1697	Al Hasakeh: 3 - Jebel Saman 3 - Tall Abyad 1
(Lice and Scabies ) UCE	1 cluster			Aleppo city and east rural

**Response Activities**

- The response team held many activities in Syria within the 1 Epi Week, 2015:
  - Meetings, lectures and seminars about EWARN, AFP surveillance, and importance of vaccination campaign in :
    - 1- Health center in Zamar- South rural of Aleppo with presence of DLO, health center workers and visitors
    - 2- Bab Al Hawa Hospital – Training and Qualification center with presence of DLOs, FLOs in Idleb, pediatricians, neurologists, orthopedic physicians, lab technicians and hospital staff.
    - 3- Abad village - hospitality center with presence of local authorities, local councils and relief workers
  - EWARN referral Laboratory equipping in Al Atarib town.
- Investigation for 4 Malaria cases in Ar Raqqa , for more details please see the extension.

ABD=Acute Bloody Diarrhea

AWD=Acute Watery Diarrhea

AFP=Acute Flaccid Paralysis

AJS=Acute Jaundice Syndrome

SARI= Severe Acute Respiratory Illness

UXD=Unexplained Death

FUO=Fever Of Unknown Origin

MEA=suspected Measles

MEN= suspected Meningitis

UCE=Unexplained Cluster Of Health Events