

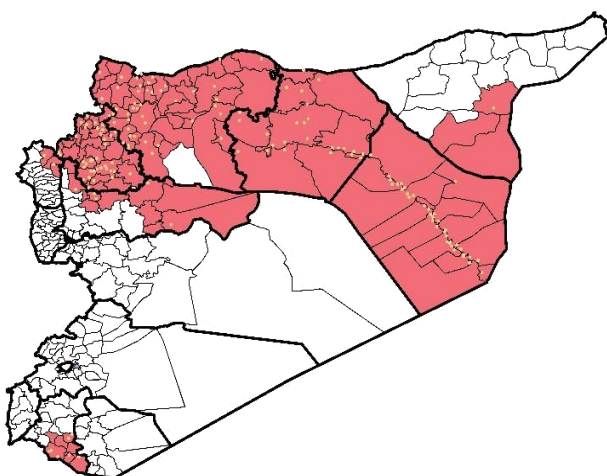
Highlights

- Implementation of 8th round of polio vaccination campaign on 28th February for 8 days, included 7 governorates in north of Syria, about 1.280.000 child under 5 years were vaccinated and the coverage percentage was 99.27%.
- During Epi-week no 11 2015; 88.3% (410/362) of the health facilities across 9 Governorates provided surveillance data, 86% of reporting sites submitted the weekly reports on time. The internal displacement circumstances in Al Hasakeh is still affecting the completeness in this week.
- Five new health facilities were added to the sentinel sites this week, 4 in rural Damascus and 1 in Jebel Saman.
- The total number of consultations reported during the reporting week was 122220 (including 40% children under the age of five) compared to 126083 consultations during week 10, 2015.
- The leading cause of morbidity was STF (Suspected Typhoid Fever), with over 815 cases, the highest alerts were reported in Al Mayadin (9).
- In Epi week 11, 5 AFP (Acute Flaccid Paralysis) cases were investigated in these districts: Abu Kamal 1 – Idleb 1 – Al Mara 1 - Azaz 1 and Al Bab 1. Investigation and sampling for 47 AFP cases were conducted since the beginning of 2015 up to date. See weekly Poliomyelitis outbreak report for more details.

- 30 measles cases reported in this week, the highest alerts were reported in Ar Raqqa (3), Menbij (3) and AsSuqaylabiyah (3). Lab investigation for one suspected case in Jebel Saman with positive result. Most cases are enrolled in a line list.
- 408 cases of SARI reported in Epi Week 11, the highest alerts were reported in Abu Kamal district (6 alerts).
- Common disease reported under others were URTI (upper respiratory tract infection), acute bronchiolitis, chicken pox, acute diarrhea, Brucellosis, Scabies, Lice, Cutaneous leishmaniasis and Hand, foot and mouth disease. 2 cases of confirmed lymph node TB in Idleb (Bennsh and Sarmin).
- About 150 new cases of Hand, foot and mouth disease were reported in Daraa (Jizeh, Tiba, Hrak, Mseifra, Eastern Ghariye and Sahwa), with one complicated case (aseptic meningitis).
- 1411 new leishmaniasis cases reported this week, the alerts reported in 5 districts: Harim 2 - Jebel Saman 1 - Ar Raqqa 1 - Tall Abyad 1 and Al Hasakeh 1.
- An outbreak of Acute Jaundice syndrome was reported in Rural Damascus. For more details please see the extension.

EWARN Coverage

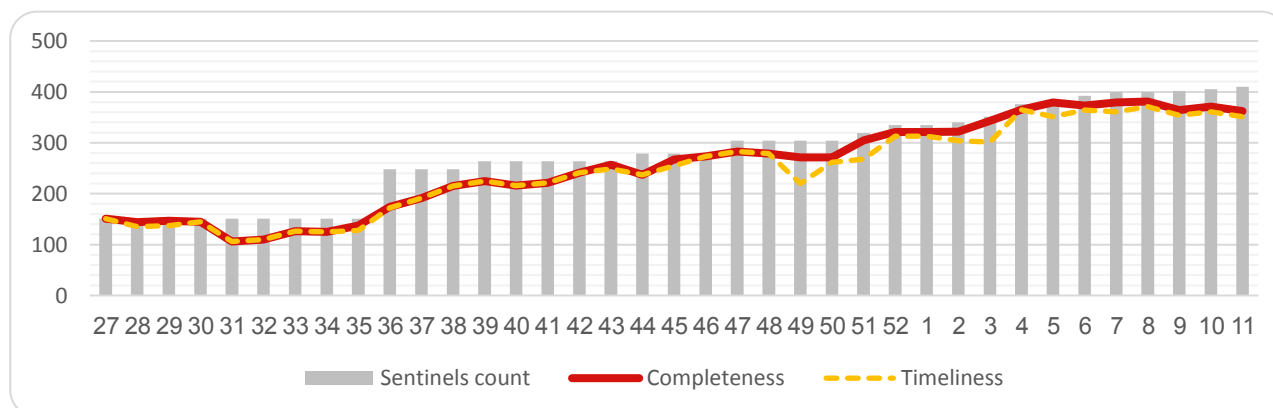
ACU covers 110 sub districts in 9 governorates



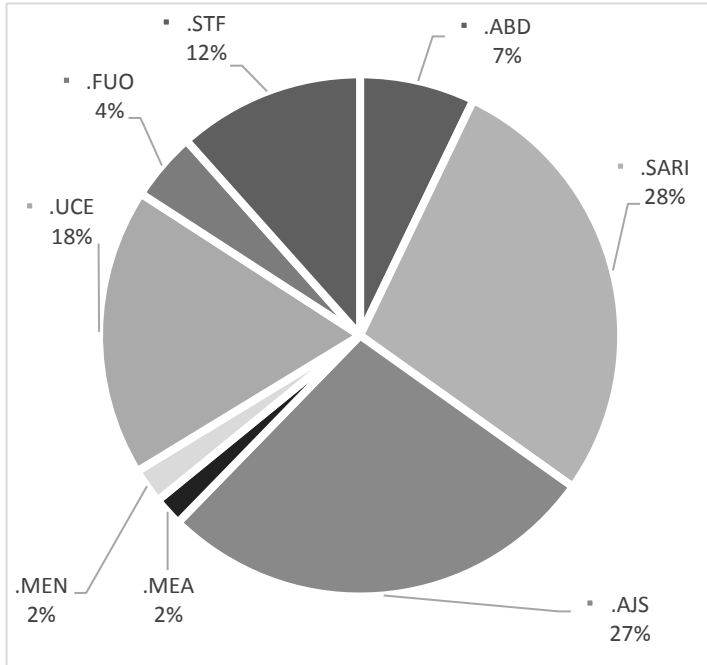
Number of Sentinel Sites and Total Number of Consultations

Governorate	# of sentinels	Reporting Sentinels	# of consultations
Aleppo	116	105	90.5%
Al-Hassakeh	35	21	60.0%
ArRaqqa	76	66	86.8%
Daraa	8	8	100.0%
DeirAzZor	61	53	86.9%
Hama	17	16	94.1%
Idleb	77	74	96.1%
Lattakia	6	5	83.3%
R.Damascus	14	14	100.0%
Grand total	410	362	88.3%

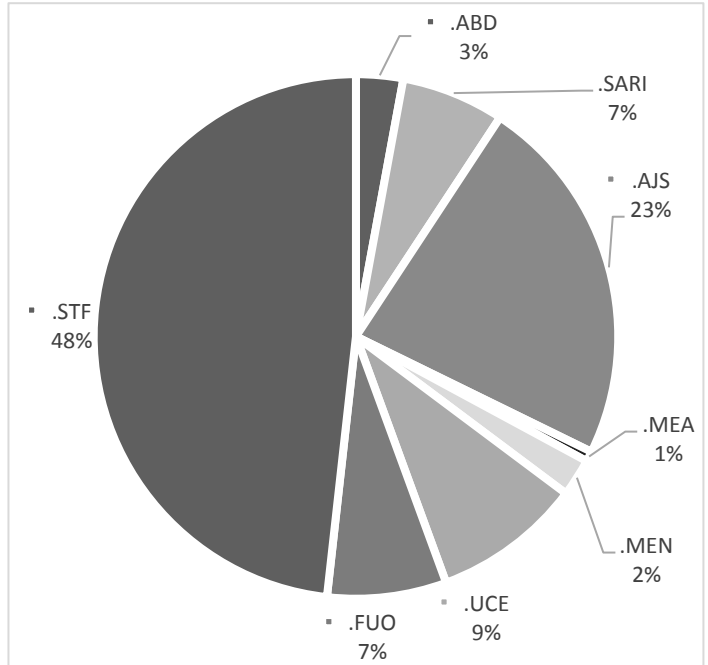
Completeness and Timeliness



Percentage of EWARN Syndromes < 5Y

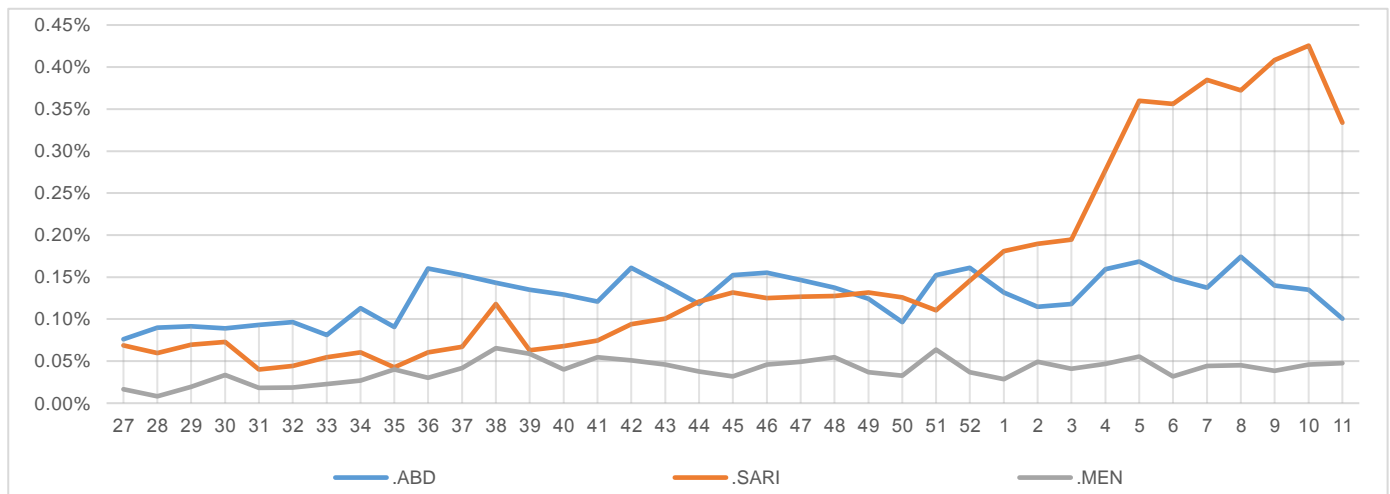


Percentage of EWARN Syndromes > 5Y



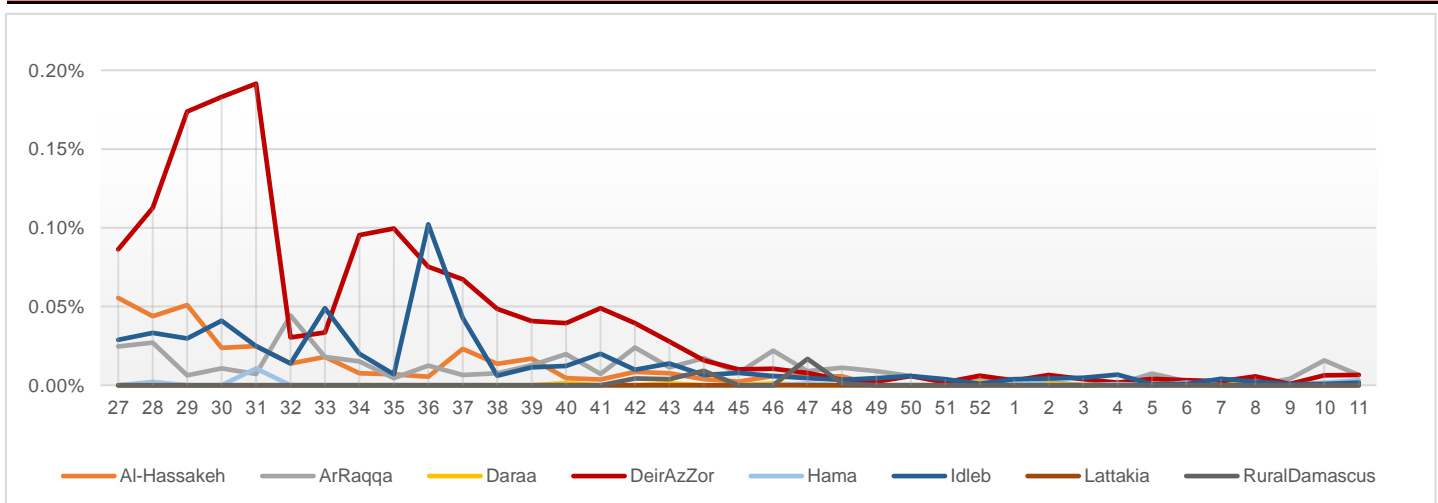
Trends for essential priority diseases in 9 governorates – Epi week 27-2014 to Epi week

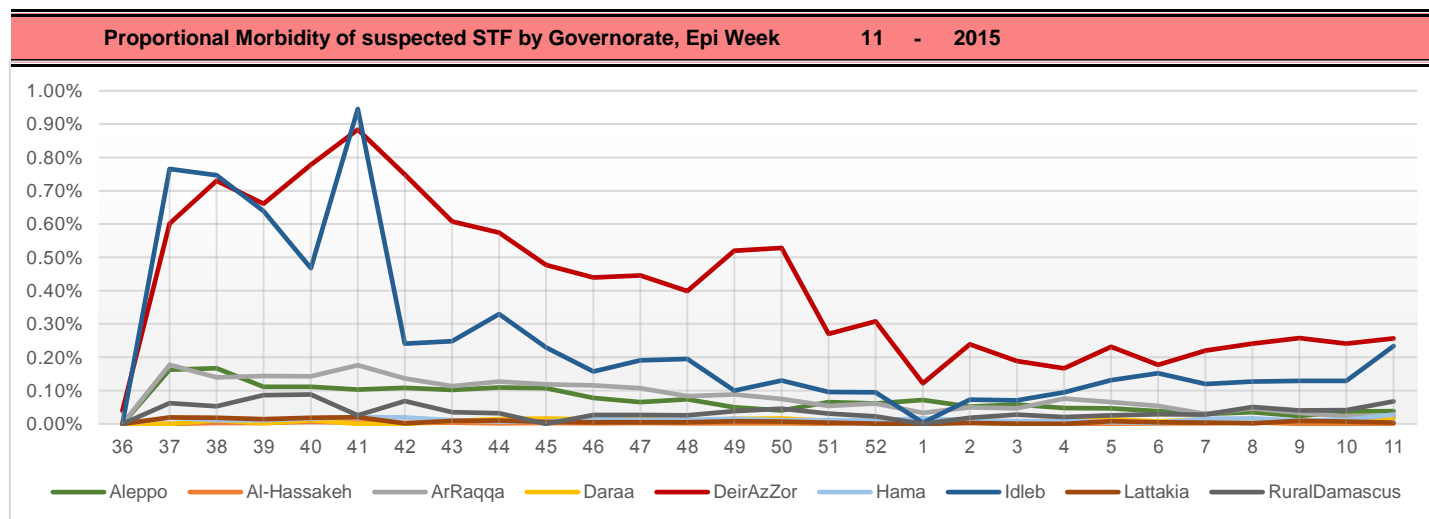
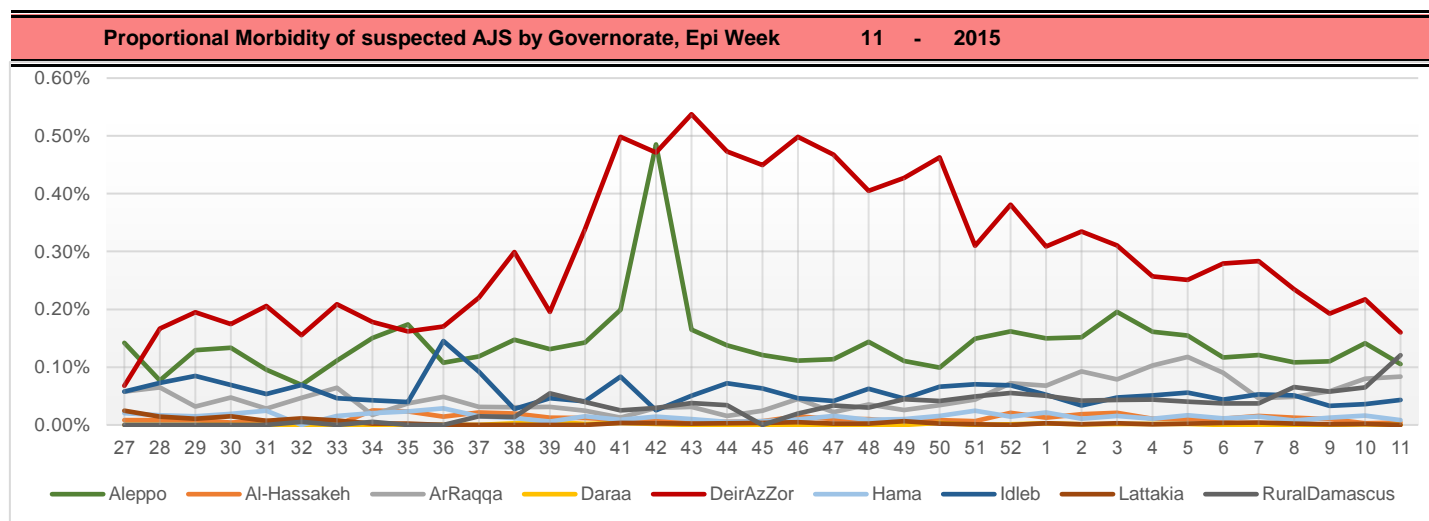
11 - 2015



Proportional Morbidity of suspected Measles by Governorate, Epi Week

11 - 2015





Number of cases that EWARN observes by age & geographical area for Epi week 11 - 2015

Governorate		ABD	AWD	AJS	SARI	AFP	MEA	MEN	UCE	UXD	FUO	LEISH	STF	OTHER	TOTAL
Aleppo	< 5	27	0	64	38	1	5	13	47	0	20	120	12	14421	35504
	> 5	4	0	64	7	1	1	8	34	0	18	345	34	20220	
AlHasakeh	< 5	0	0	2	2	0	0	0	0	0	0	55	0	856	2286
	> 5	1	0	3	2	0	0	0	0	0	1	101	1	1262	
ArRaqqa	< 5	12	0	43	5	0	2	2	94	0	1	41	2	5350	12636
	> 5	7	0	59	4	0	6	22	0	0	10	126	25	6825	
Daraa	< 5	1	0	0	7	0	2	0	49	0	0	0	5	2224	5355
	> 5	0	0	0	0	0	0	0	29	0	1	0	17	3020	
DeirEzZor	< 5	26	0	152	116	0	8	6	2	0	13	55	73	9684	17309
	> 5	15	0	43	16	0	0	1	2	0	50	67	240	6740	
Hama	< 5	5	0	0	22	0	2	0	0	0	5	42	0	2148	6824
	> 5	5	0	10	4	0	2	0	0	0	16	137	34	4392	
Idleb	< 5	11	0	24	127	1	2	4	6	0	8	74	30	12017	32739
	> 5	9	0	29	56	1	0	1	42	0	8	246	255	19788	
Lattakia	< 5	0	0	0	0	0	0	0	0	0	0	0	1	395	1847
	> 5	0	0	0	0	0	0	0	0	0	0	1	4	1446	
Rural Damascus	< 5	0	0	30	1	0	0	0	7	0	2	0	10	2332	7390
	> 5	0	0	117	1	0	0	1	23	0	0	1	72	4793	
TOTAL	< 5	82	0	315	318	2	21	25	205	0	49	387	133	49427	121890
	> 5	41	0	325	90	2	9	33	130	0	104	1024	682	68486	
Grand total		123	0	640	408	4	30	58	335	0	153	1411	815	117913	

Disease	Alert threshold	#HF reach threshold	# Cases	The most affected Communities-Districts
AFP	1	5	5	Abu Kamal 1 - Idleb 1 - Al Mara 1 - Azaz 1 - Al Bab 1
MEA	1	21	30	Ar Raqqa 3 - Menbij 3 - AsSuqaylabiyah 3 - Abu Kamal 2 - Harim 2 - Jebel Saman 2 - Izraa 1 - Daraa 1 - Tall Abyad 1 - AthThawrah 1 - Al Mayadin 1 - Deir ez zor 1
AJS	5	44	640	Al Mayadin 8 - Ar Raqqa 8 - Rural Damascus 7 - Abu Kamal 5 - Menbij 4 - Duma 3 - Jebel Saman 2 - Azaz 2 - Deir ez zor 2 - MaarratAnNuman 2 - Al Bab 1
STF	5	34	815	Al Mayadin 9 - Harim 7 - Rural Damascus 6 - Deir ez zor 3 - JisrAshShugur 2 - Ariha 1 - Daraa 1 - Jebel Saman 1 - Idleb 1 - Abu Kamal 1 - Duma 1 - AsSalamiyeh 1
ABD	5	2	123	Deir ez zor 1 - Abu Kamal 1
SARI	5	23	408	Abu Kamal 6 - AL Mayadin 3 - Al Bab 2 - MaarratAnNuman 2 - Idleb 2 - Harim 2 - JisrAshShugur 2 - Jebel Saman 1 - Al Mara 1 - Izraa 1 - Ariha 1
MEN	5	0	58	
(LEISH) UCE	50	6	1411	Harim 2 - Jebel Saman 1 - Ar Raqqa 1 - Tall Abyad 1 - Al Hasakeh 1
(Lice and Scabies)	1 cluster			Aleppo east rural- west and north rural of Hama - Daraa rural - Ar Raqqa city - east and north rural of Idleb

Response Activities

- 1- Preparation for ERC and quarterly meeting with DLOs.
- 2- Investigation of AJS outbreak in Rural Damascus, [for more details please see the extension.](#)
- 3- Lab investigation for suspected measles case in Talaad – south rural of Aleppo.
- 4- Health and Epidemiological assessment in Daraa (west area) and Quneitra (east and south), and employment a new staff of EWARN there.
- 5- Updating health mapping in coverage areas according to the OCHA naming and administrative partitions.

ABD=Acute Bloody Diarrhea

AWD=Acute Watery Diarrhea

AFP=Acute Flaccid Paralysis

AJS=Acute Jaundice Syndrome

SARI= Severe Acute Respiratory Illness

UXD=Unexplained Death

FUO=Fever Of Unknown Origin

MEA=suspected Measles

MEN= suspected Meningitis

UCE=Unexplained Cluster Of Health Events