

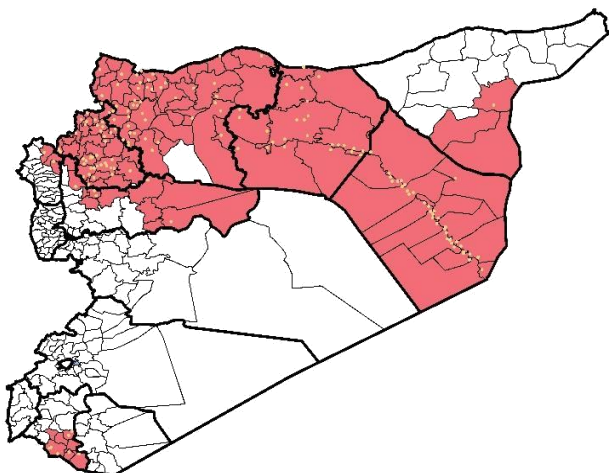
Highlights

- Preparation for quarterly meeting with DLOs next week.
- Recruitment a new staff for EWARN in Quneitra and western area of Daraa.
- During Epi-week no 12 2015; 89% (416/369) of the health facilities across 9 Governorates provided surveillance data, 86% of reporting sites submitted the weekly reports on time. The internal displacement circumstances in Al Hasakeh is still affecting the completeness in this week.
- Six new health facilities were added to the sentinel sites this week, 2 in Daraa , 2 in Harim , 1 in Al Mayadin and 1 in Izraa .
- The total number of consultations reported during the reporting week was 125018 (including 40% children under the age of five) compared to 122220 consultations during week 11, 2015.
- The leading cause of morbidity was STF (Suspected Typhoid Fever), with over 814 cases, the highest alerts were reported in Harim (8).
- In Epi week 12, 5 AFP (Acute Flaccid Paralysis) cases were investigated in these districts: Abu Kamal 1 – Al Mayadin 1 – Al Mara 1 - Ariha 1 and Al Bab 1.

- Investigation and sampling for 52 AFP cases were conducted since the beginning of 2015 up to date. See weekly Poliomyelitis outbreak report for more details.
- 25 measles cases reported in this week, the highest alerts were reported in Menbij (4), Abu Kamal (4). Lab investigation for one suspected case in Harim with negative result. Most cases are enrolled in a line list.
- 342 cases of SARI reported in Epi Week 12, the highest alerts were reported in Abu Kamal district (8 alerts).
- Common disease reported under others were URTI (upper respiratory tract infection), acute bronchiolitis, chicken pox, acute diarrhea, Brucellosis, Scabies, Lice ,Cutaneous leishmaniasis and Hand, foot and mouth disease.
- About 94 new cases of Hand, foot and mouth disease were reported in Daraa ( Jizeh, Hrak, Izraa and Kherbet Ghazala).
- 1279 new leishmaniasis cases reported this week, the alerts reported in 5 districts: Harim 2 - Jebel Saman 1 - Ar Raqqa 1 - Tall Abyad 1 and As Salamiyeh 1.

EWARN Coverage

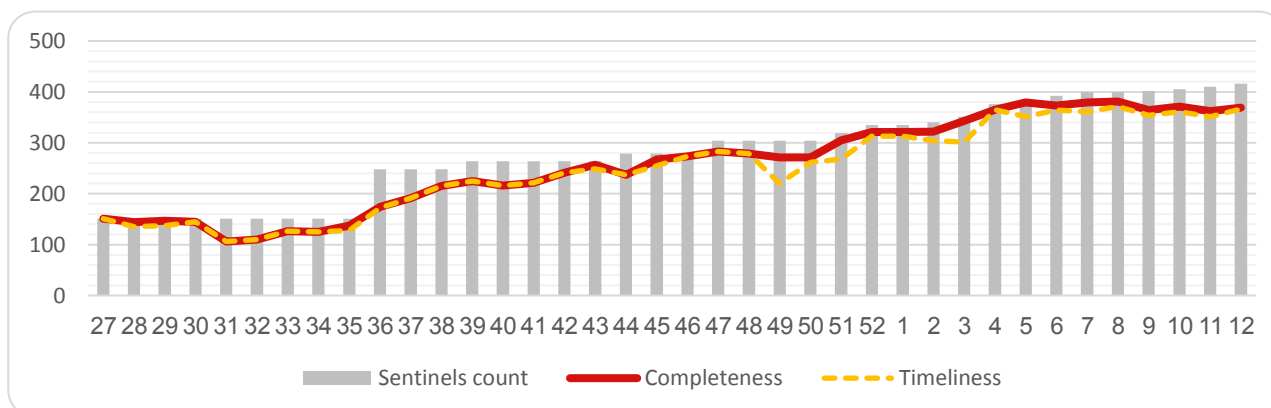
ACU covers 110 sub districts in 9 governorates



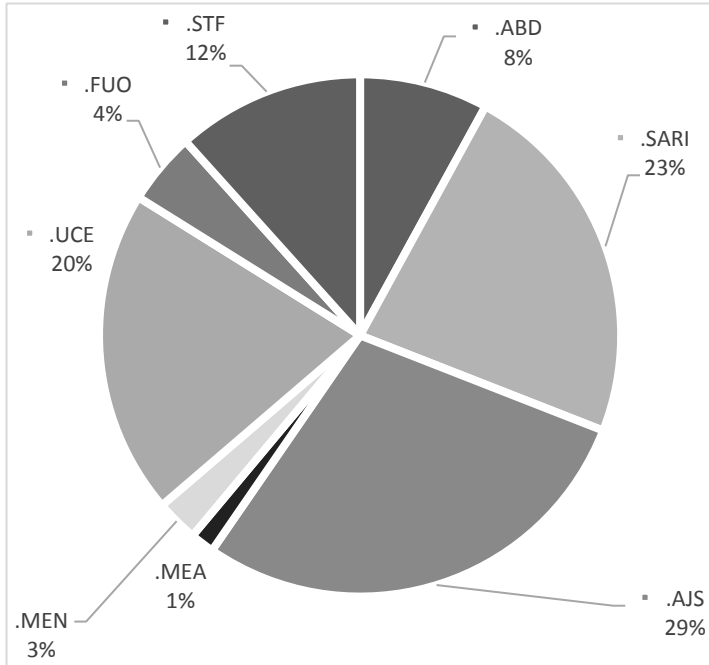
Number of Sentinel Sites and Total Number of Consultations

Governorate	# of sentinel	Reporting Sentinels	# of consultations
Aleppo	116	109	94.0%
Al-Hassakeh	35	21	60.0%
ArRaqqa	76	68	89.5%
Daraa	11	8	72.7%
DeirAzZor	62	55	88.7%
Hama	17	15	88.2%
Idleb	79	75	94.9%
Lattakia	6	5	83.3%
R.Damascus	14	13	92.9%
Grand total	416	369	88.7%

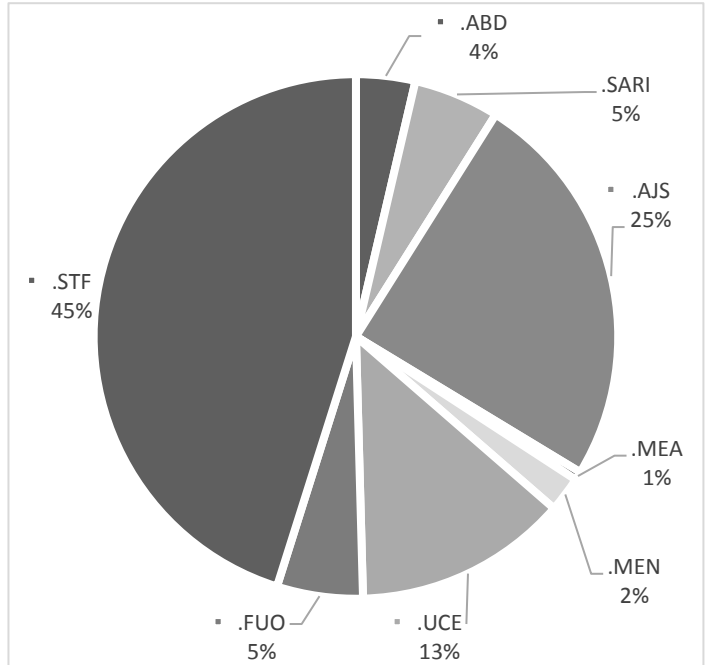
Completeness and Timeliness



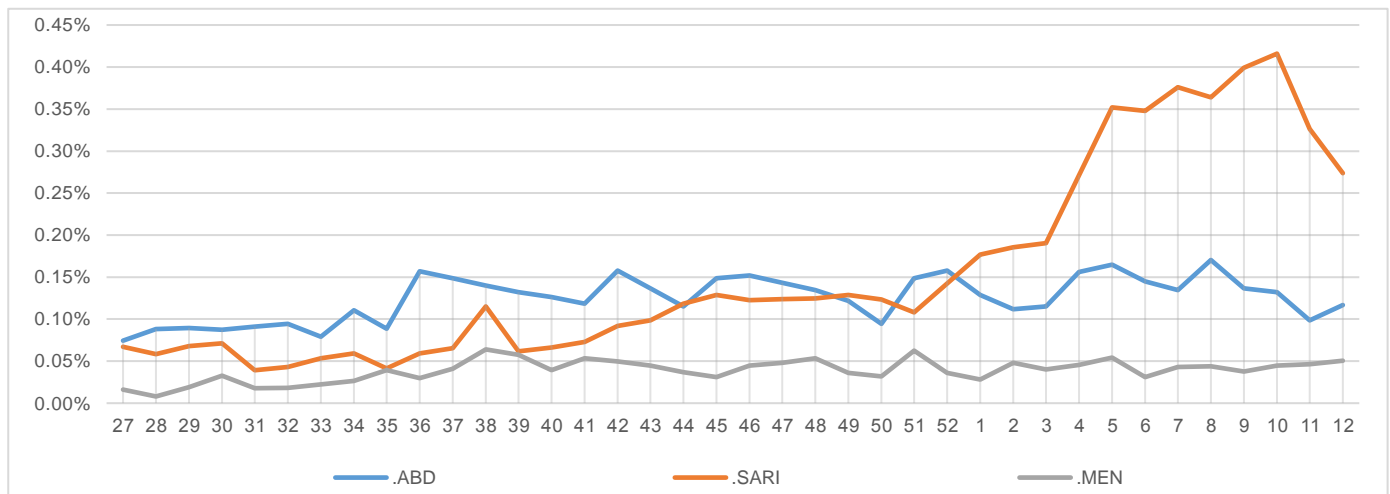
**Percentage of EWARN Syndromes < 5Y**



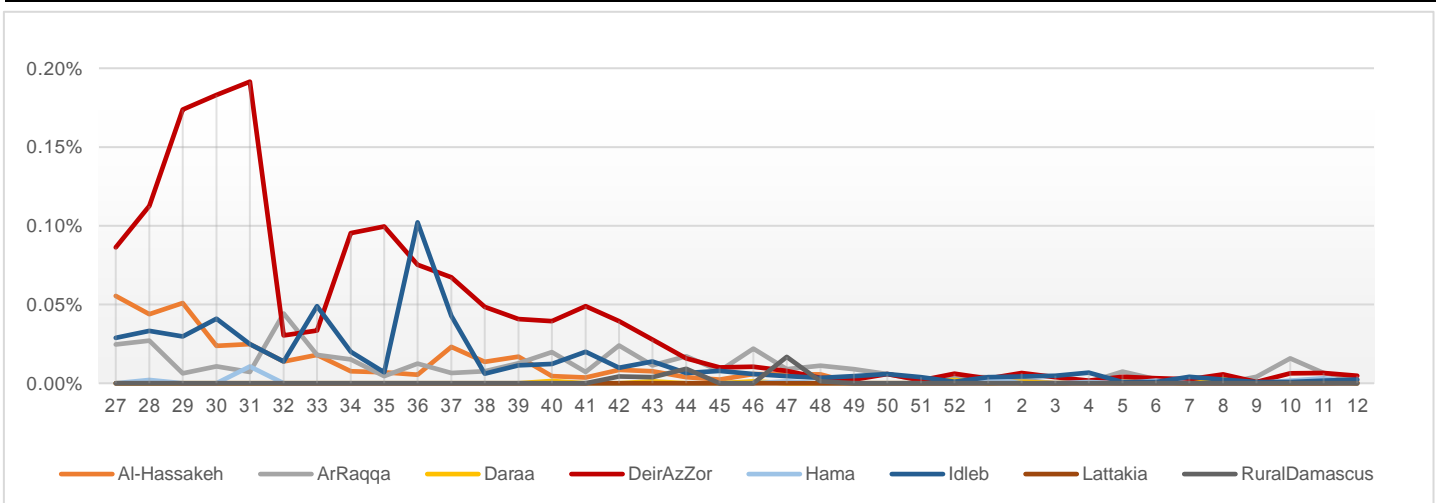
**Percentage of EWARN Syndromes > 5Y**

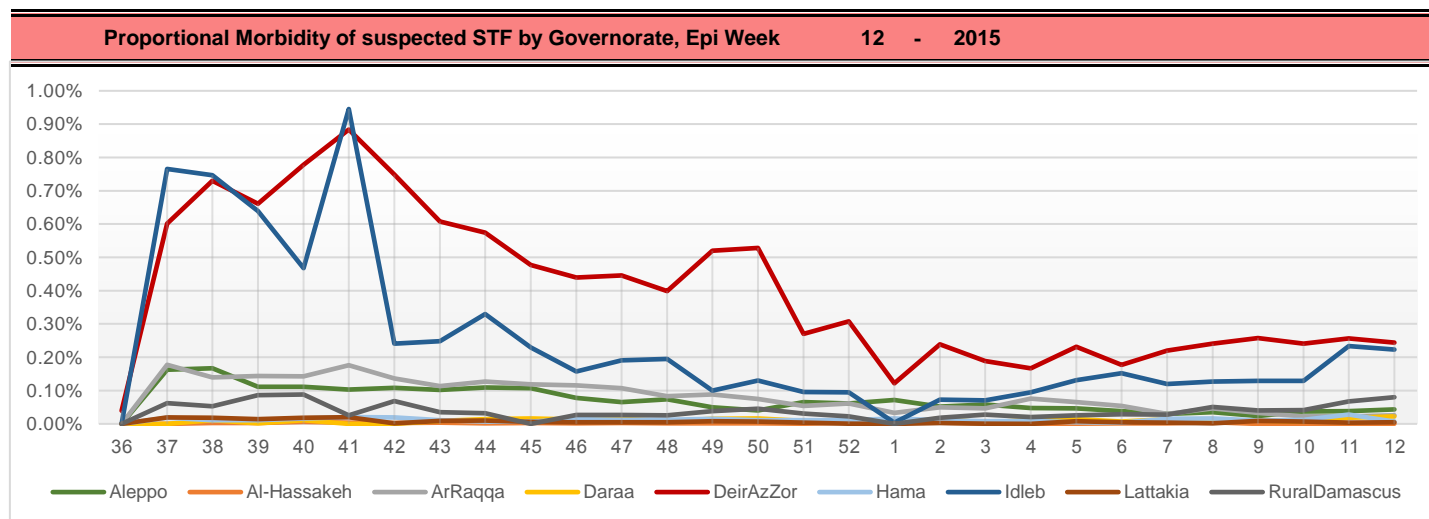
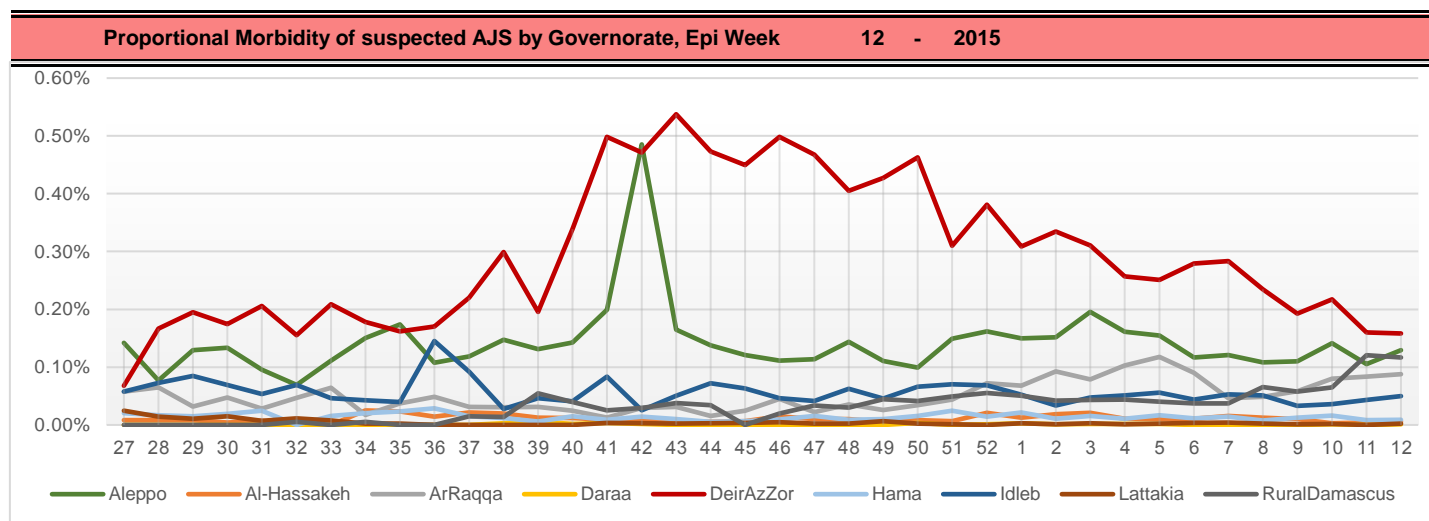


**Trends for essential priority diseases in 9 governorates – Epi week 27-2014 to Epi week 12 - 2015**



**Proportional Morbidity of suspected Measles by Governorate, Epi Week 12 - 2015**





**Number of cases that EWARN observes by age & geographical area for Epi week 12 - 2015**

Governorate		ABD	AWD	AJS	SARI	AFP	MEA	MEN	UCE	UXD	FUO	LEISH	STF	OTHER	TOTAL
Aleppo	< 5	35	0	73	36	2	6	11	68	1	14	95	12	14616	36582
	> 5	19	0	89	2	1	6	10	72	0	16	262	42	21094	
AlHasakeh	< 5	0	0	5	0	0	1	0	0	0	0	40	0	807	2247
	> 5	0	0	2	2	0	0	0	0	0	0	76	1	1313	
ArRaqqa	< 5	9	0	47	4	0	2	3	78	0	3	42	3	5407	12947
	> 5	10	0	63	2	1	1	18	0	0	10	126	29	7089	
Daraa	< 5	1	0	0	10	0	0	0	72	0	1	0	4	2449	5477
	> 5	0	0	1	2	0	0	0	58	0	0	1	24	2854	
DeirEzZor	< 5	28	0	151	114	1	5	7	2	0	14	53	74	10206	18274
	> 5	8	0	47	30	0	1	1	2	0	42	56	231	7201	
Hama	< 5	6	0	7	7	0	0	0	0	0	10	41	0	2425	7499
	> 5	3	0	4	6	0	0	0	0	0	5	142	9	4834	
Idleb	< 5	12	0	30	91	3	3	8	8	0	7	85	24	12259	34166
	> 5	12	0	32	35	0	0	3	43	0	7	259	255	20990	
Lattakia	< 5	0	0	0	0	0	0	0	0	0	0	0	1	469	2116
	> 5	0	0	3	0	0	0	0	0	0	0	0	5	1638	
Rural Damascus	< 5	0	0	14	0	0	0	1	2	1	2	1	15	1975	5821
	> 5	3	0	132	1	0	0	1	24	0	0	0	85	3564	
TOTAL	< 5	91	0	327	262	6	17	30	230	2	51	357	133	50613	125129
	> 5	55	0	373	80	2	8	33	199	0	80	922	681	70577	
Grand total		146	0	700	342	8	25	63	429	2	131	1279	814	121190	

**Number and distribution of alerts reported in Epi-week**

**12 - 2015**

Disease	Alert threshold	#HF reach threshold	# Cases	The most affected Communities-Districts
AFP	1	5	5	Abu Kamal 1 - Al Mayadin 1 -Al Mara 1 - Al Bab 1 - Ariha 1
MEA	1	18	25	Menbij 4 - Abu Kamal 4 - Ar Raqqa 2 - Jebel Saman 2 - Harim 2 - Al Bab 1 - Al Hasakeh 1 - Idleb 1 - AthThawrah 1
AJS	5	43	700	Rural Damascus 6 - Al Mayadin 6 - Ar Raqqa 5 - Abu Kamal 4 - Jebel Saman 4 - Deir ez zor 3 - Al Bab 3 - Duma 3 - Menbij 3 - Azaz 2- Tall Abyad 1 -Harim 1 - Jisr AshShugur 1 - MaarratAnNuman1
STF	5	34	814	Harim 8 - AlMayadin 7 - Rural Damascus 6 - Deir ez zor 3 - Jebel Saman 2 - Jisr AshShugur 2 - Daraa 2 - Lattakia 1 - Duma 1 - Al Mara 1 -Idleb 1
ABD	5	6	146	Menbij 2 - Abu Kamal 1 - Al Mayadin 1- Harim 1- Jebel Saman 1
SARI	5	21	342	Abu Kamal 8 - Al Mayadin 3 - MaarratAnNuman 3 - Al Bab 2 - Jisr AshShugur 2 - Al Mara 2 - Izraa 1
MEN	5	0	63	
(LEISH) UCE	50	6	1279	Harim 2 - Ar Raqqa 1 - Jebel Saman 1 - Tall Abyad 1 - As Salamiyeh
(Lice and Scabies )	1 cluster			Ar Raqqa city - North rural of Idleb - North and west rural of Hama - Daraa rural

**Response Activities**

- Participation with Task Force training for governorates' supervisors and staff for the next polio campaign.
- Finalize the EWARN laboratory guidelines bilingual.
- Recruitment a new staff for EWARN in Quneitra and western area of Daraa.
- Preparation for quarterly meeting with DLOs next week.
- Lab investigation for suspected measles case in Harim, with negative result.
- Health and Epidemiological assessment in Afrin – rural Aleppo.

ABD=Acute Bloody Diarrhea

AWD=Acute Watery Diarrhea

AFP=Acute Flaccid Paralysis

AJS=Acute Jaundice Syndrome

SARI= Severe Acute Respiratory Illness

UXD=Unexplained Death

FUO=Fever Of Unknown Origin

MEA=suspected Measles

MEN= suspected Meningitis

UCE=Unexplained Cluster Of Health Events