

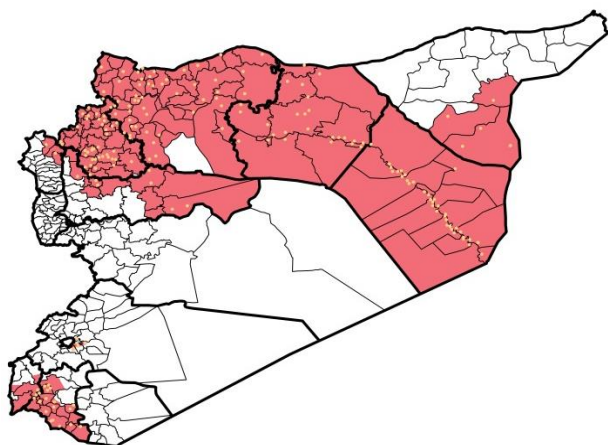
Highlights

- Quarterly meeting with DLOs was held on March 26<sup>th</sup>, for more details please see the extension.
- Recruitment a new staff for EWARN in Afrin – rural Aleppo.
- During Epi-week no 13 2015; 86% (432/372) of the health facilities across 10 Governorates provided surveillance data, 70% of reporting sites submitted the weekly reports on time. The decrease in timeliness is due to the delayed reporting during quarterly meeting with DLOs.
- 16 new health facilities were added to the sentinel sites this week, 4 in Dar`a , 4 in AsSanamayn , 3 in Izra` , 3 in Quneitra, 1 in Al Fiq and 1 in Damascus.
- The total number of consultations reported during the reporting week was 117035 (including 40% children under the age of five) compared to 125018 consultations during week 12, 2015.
- The leading cause of morbidity was STF (Suspected Typhoid Fever), with over 1058 cases, the highest alerts were reported in Al Mayadin (11).
- In Epi week 13, 10 AFP (Acute Flaccid Paralysis) cases were investigated in these districts: Jebel Saman 3 - Membij 2 - Ar Raqqa 1 - Al Bab 1 - Deir ez zor 1 - Ariha 1 and As Suqaylabiyah 1 .

- Investigation and sampling for 62 AFP cases were conducted since the beginning of 2015 up to date. See weekly Poliomyelitis outbreak report for more details.
- 25 measles cases reported in this week, the highest alerts were reported in Membij (5). Most cases are enrolled in a line list.
- 372 cases of SARI reported in Epi Week 13, the highest alerts were reported in Abu Kamal district (7 alerts).
- Common disease reported under others were URTI (upper respiratory tract infection), acute bronchiolitis, chicken pox, acute diarrhea, Brucellosis, Scabies, Lice ,Cutaneous leishmaniasis and Hand, foot and mouth disease.
- About 91 new cases of Hand, foot and mouth disease were reported in Daraa ( Jizeh, Eastern Ghariye and Nahta ).
- 1185 new leishmaniasis cases reported this week, the alerts reported in 5 districts: Jebel Saman 2 - Ar Raqqa 1 - Tall Abyad 1 - As Salamiyeh 1 and Harim 1 .

EWARN Coverage

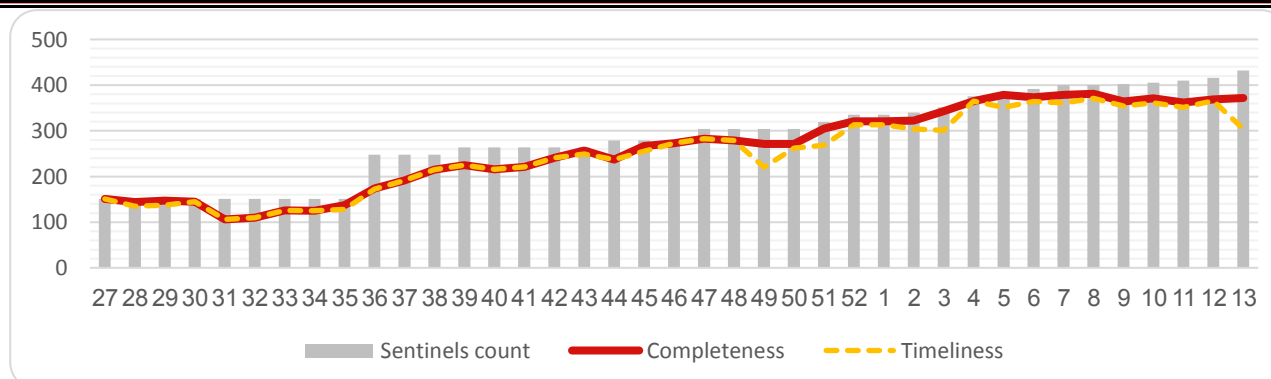
ACU covers 111 sub districts in 10 governorates



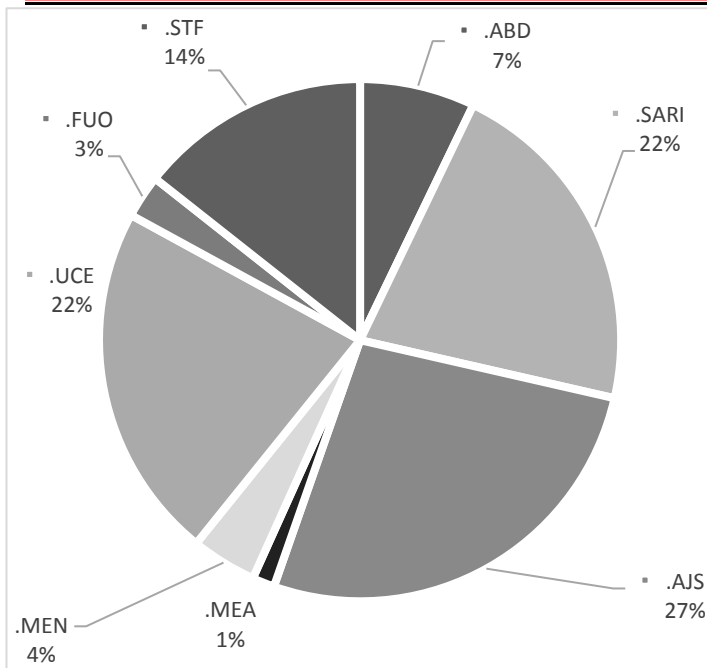
Number of Sentinel Sites and Total Number of Consultations

Governorate	# of sentinel	Reporting Sentinels	# of consultations	
Aleppo	116	107	92.2%	36123
Al-Hassakeh	35	21	60.0%	2003
ArRaqqa	76	70	92.1%	13632
Daraa	22	21	95.5%	4112
DeirAzZor	62	51	82.3%	17292
Hama	17	15	88.2%	6924
Idleb	79	63	79.7%	27718
Lattakia	6	5	83.3%	1779
R.Damascus	15	15	100.0%	7386
Qunaitra	4	4	100.0%	66
Grand total	432	372	86.1%	117035

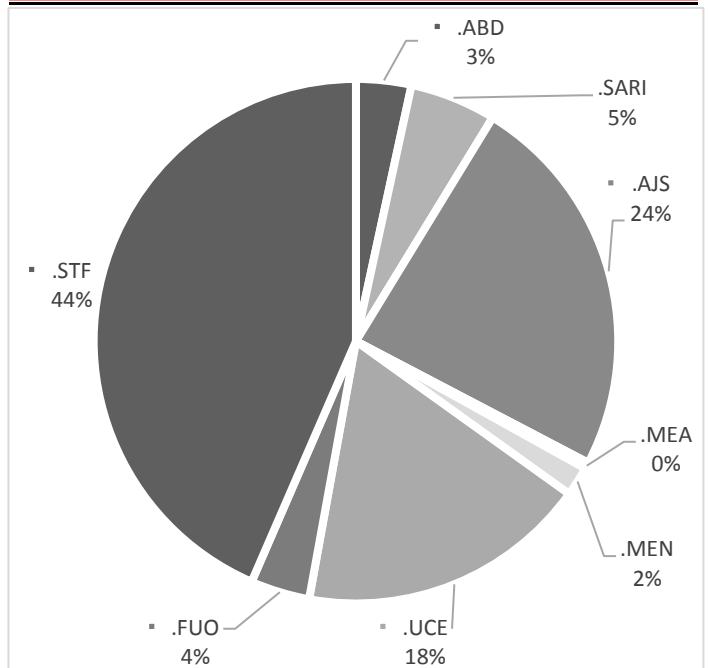
Completeness and Timeliness



**Percentage of EWARN Syndromes < 5Y**

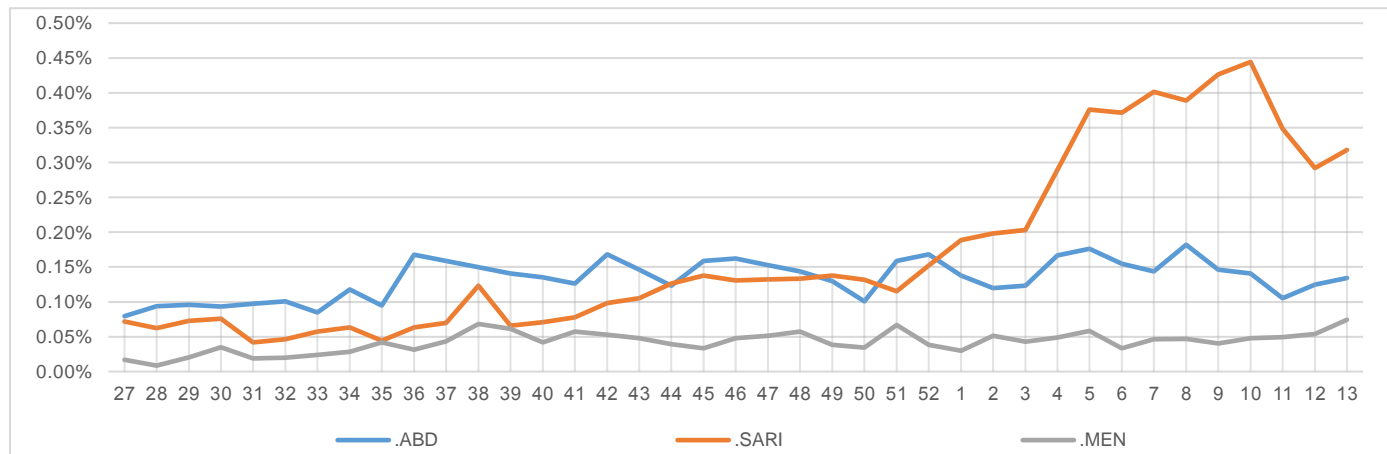


**Percentage of EWARN Syndromes > 5Y**



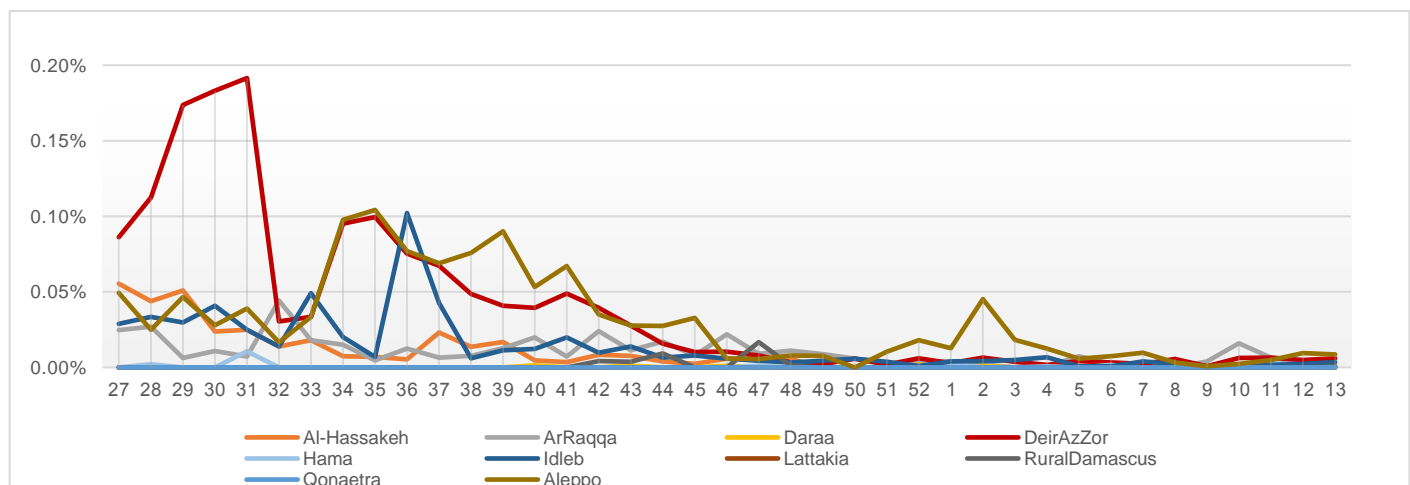
**Trends for essential priority diseases in 9 governorates – Epi week 27-2014 to Epi week**

**13 - 2015**



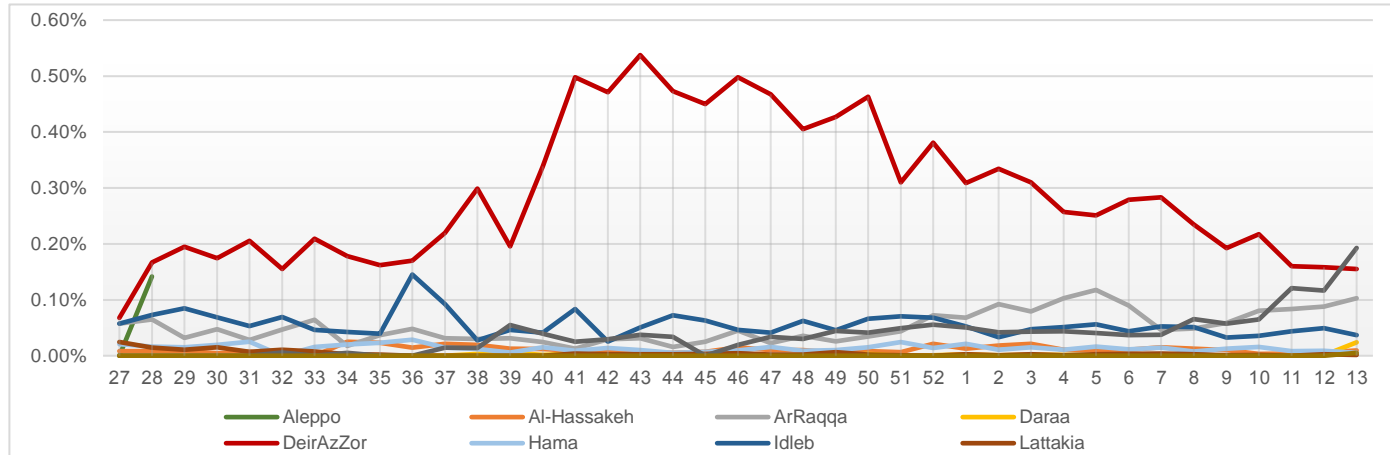
**Proportional Morbidity of suspected Measles by Governorate, Epi Week**

**13 - 2015**



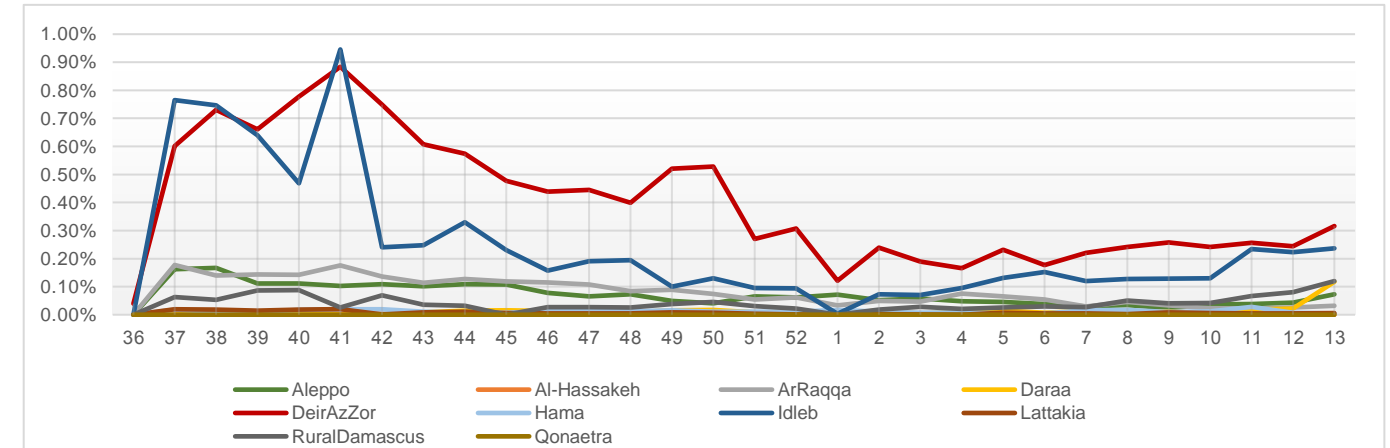
Proportional Morbidity of suspected AJS by Governorate, Epi Week

13 - 2015



Proportional Morbidity of suspected STF by Governorate, Epi Week

13 - 2015



Number of cases that EWARN observes by age & geographical area for Epi week

13 - 2015

Governorate	ABD	AWD	AJS	SARI	AFP	MEA	MEN	UCE	UXD	FUO	LEISH	STF	OTHER	TOTAL
Aleppo	< 5	23	0	97	28	1	7	20	68	2	22	70	36	15331
	> 5	27	0	96	3	0	3	15	83	2	20	241	49	20103
AlHasakeh	< 5	1	0	5	0	0	0	0	0	0	0	20	0	697
	> 5	0	0	6	1	0	0	0	0	0	0	54	0	1219
ArRaqqqa	< 5	12	0	42	2	0	0	3	59	0	2	44	4	5498
	> 5	16	0	78	3	0	1	16	0	0	12	132	34	7202
Daraa	< 5	0	1	7	27	1	1	2	118	0	0	0	19	1560
	> 5	0	0	21	8	0	1	1	171	0	1	0	118	2122
DeirEzZor	< 5	40	0	135	99	0	6	11	2	0	5	43	65	9710
	> 5	12	0	46	21	0	1	2	4	0	34	62	304	6613
Hama	< 5	9	0	4	5	0	0	0	0	1	1	39	0	1830
	> 5	2	0	2	8	0	0	0	0	0	2	146	5	4870
Idleb	< 5	3	0	26	98	1	3	13	12	0	1	97	35	9965
	> 5	11	0	17	54	0	1	1	44	0	5	231	242	16858
Lattakia	< 5	0	0	0	0	0	0	0	0	0	0	0	1	392
	> 5	0	0	2	0	0	0	0	0	0	0	0	6	1378
Rural Damascus	< 5	0	0	12	2	0	0	0	7	0	2	0	17	2422
	> 5	1	0	213	2	1	1	1	22	0	0	6	123	4554
Qunaitra	< 5	0	0	2	3	0	0	1	7	0	0	0	0	0
	> 5	0	0	4	8	0	0	1	40	0	0	0	0	0
TOTAL	< 5	88	1	330	264	3	17	50	273	3	33	313	177	47405
	> 5	69	0	485	108	1	8	37	364	2	74	872	881	64919
Grand total		157	1	815	372	4	25	87	637	5	107	1185	1058	112324

Disease	Alert threshold	#HF reach threshold	# Cases	The most affected Communities-Districts
AFP	1	10	10	Jebel Saman 3 - Menbij 2 - Ar Raqqa 1 - Al Bab 1 - Deir ez zor 1 - Ariha 1 - As Suqaylabiyah 1
MEA	1	19	25	Menbij 5 - Abu Kamal 4 - Dar`a 2 - MaarratAnNuman 2 - Idleb 1 - Al Bab 1 - Duma 1 - Jebel Saman 1 - Ar Raqqa 1 - Al Mayadin 1
AJS	5	49	815	Al Mayadin9- Rural Damascus7 -Ar Raqqa 6- Abu Kamal4- Jebel Saman 4- Menbij 4- Duma 3 -Azaz 3 -Deir ez zor 2 -Tall Abyad1- Harim 1- Jisr AshShugur1 -MaarratAnNuman1-Al Bab 1-Dar`a 1- Hasakeh 1
STF	5	20	1058	Al Mayadin 11 - Harim 7 - Rural Damascus 6 - Jebel saman 3 - Dar`a 3 - Deir ez zor 2 - Izra` 2 - Lattakia 1 - Duma 1 - Al Mara 1 -Ariha 1 - Jisr AshShugur 1 - Abu Kamal 1
ABD	5	2	157	Menbij 1 - Abu Kamal 1
SARI	5	21	372	Abu Kamal 7 - Al Mayadin 3 - MaarratAnNuman 3 - Ariha 3 - Al Bab 1 - Dar`a 1 - Al Mara 1 - Harim 1- Al khashneaa 1
MEN	5	0	87	
(LEISH) UCE	50	6	1185	Jebel Saman 2 - Ar Raqqa 1 - Tall Abyad 1 - As Salamiyeh 1 Harim 1

## Response Activities

- 1- Quarterly meeting with DLOs was held on 26<sup>th</sup>, for more details [please see the extension](#)
- 2- Recruitment a new staff for EWARN in Afrin – rural Aleppo.
- 3- Update case definition for Acute Flaccid Paralysis (AFP) .
- 4- Two syndromes were added to the EWARN Surveillance list which are : [Acute Diarrhea \(AD\)](#) and [Influenza Like Illness \(ILI\)](#) .
- 5- Update case definition for Fever of unknown origin (FUO).
- 6- Participation with Task Force training for governorate`s supervisors and staff for the next polio campaign.
- 7- Series of meetings with several NGOs (MRFS, SAMS, SEMA, UOSSM) were held to improve the cooperation between the parties and improve relations with the sentinel sites which supported by them in Syria.

ABD=Acute Bloody Diarrhea	AWD=Acute Watery Diarrhea	AFP=Acute Flaccid Paralysis	AJS=Acute Jaundice Syndrome	SARI= Severe Acute Respiratory Illness
UXD=Unexplained Death	FUO=Fever Of Unknown Origin	MEA=suspected Measles	MEN= suspected Meningitis	UCE=Unexplained Cluster Of Health Events