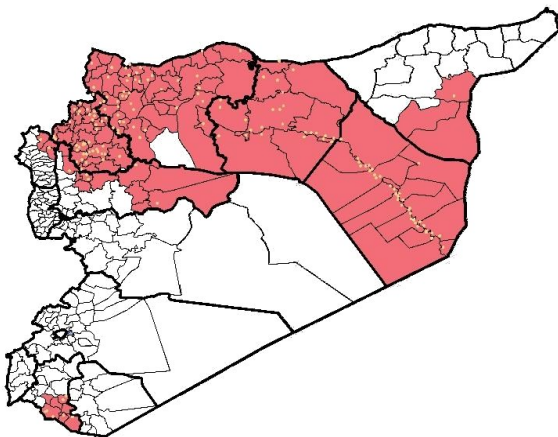


Highlights

- Early warning and response network (EWARN) was launched on July 2013 in 61 sub district for 7 governorates, and the expansion phase has started on September 2014 to cover besieged areas in Rural Damascus (east Gota) and Daraa governorate . Ongoing on site trainings to improve weekly reporting and immediate notification are underway in all governorates.
- more than 150 (field level officers) FLOs have been added to cover more than 335 centers.
- During Epi-week no 2 2015; 94.7% (322/340) of the health facilities across 9 Governorates provided surveillance data 89.4% of reporting sites submitted the weekly reports on time.
- **Five new health facilities were added to the sentinel sites and sent reports this week, all in Aleppo governorate: 2 in Menbij, 1 in Al Khafseh , 1 in Azaz and 1 in Akhtarin.**
- The total number of consultations reported during the reporting week was 93737 (including 40% children under the age of five) compared to 102944 consultations during week 1, 2015.
- **The leading cause of morbidity was AJS (Acute Jaundice Syndrome), with**
- **56 measles cases reported in this week, one case was reported and investigated by IMC in Bab Al Salameh camps.** the highest alerts was reported in Menbij district (20 alerts), slight increase within the last 3 weeks .
- In Epi week 2 , 5 AFP (Acute Flaccid Paralysis) cases were reported in: Ar Raqqa 3 - Al Hasakeh 1 - Al Baba 1 , 109 AFP cases reported since the beginning of 2014 up to date. See weekly Poliomyelitis outbreak report for more details.
- 232 cases of SARI reported in Epi Week 2, with clear increase of cases within the last 3 weeks.
- Common disease reported under others were URTI (upper respiratory tract infection), chicken box, acute diarrhea, Brucellosis, Scabies, Lice and Cutaneous leishmaniasis
- 1697 new leishmaniasis cases reported this week, the reported alerts were in 4 districts: Al Hasakeh (1 alerts) – Jebel Saman (1 alerts) – Tall Abyad (1 alert) –Harim (1 alert).
- **An outbreak of Acute Bronchiolitis reported in west rural of Aleppo (Daret Azza – Al Atarib) and Atmeh camps, for more details [please see the extension.](#)**

EWARN Coverage

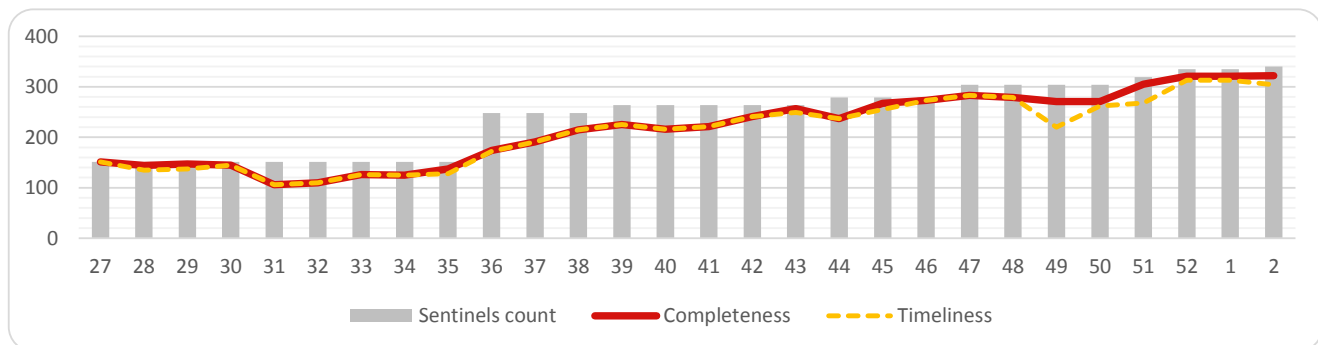
ACU covers 110 sub districts in 9 governorates



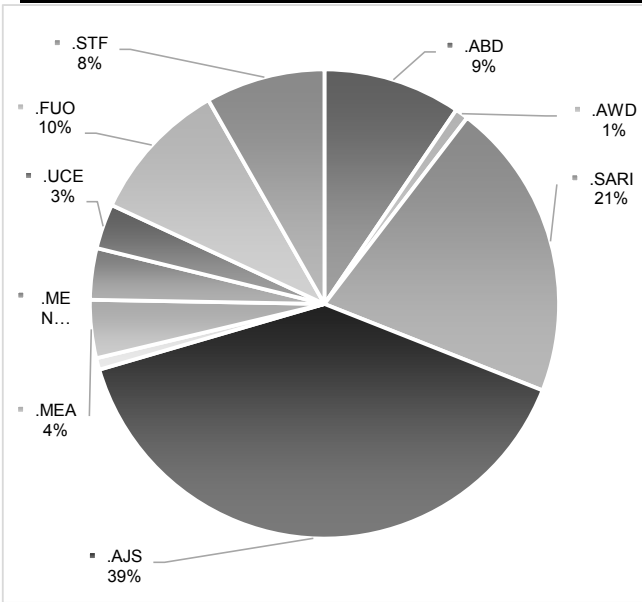
Number of sentinel sites and Total Number of Consultations

Governorate	# of sentinel sites	Reporting Sentinels	# of consultations
Aleppo	101	95	23654
Al-Hassakeh	20	20	2485
ArRaqqa	75	71	16075
Daraa	7	7	3318
DeirAzZor	58	54	17819
Hama	12	12	4092
Idleb	52	51	21506
Lattakia	6	5	1466
R.Damascus	9	7	3322
Grand total	340	322	93737

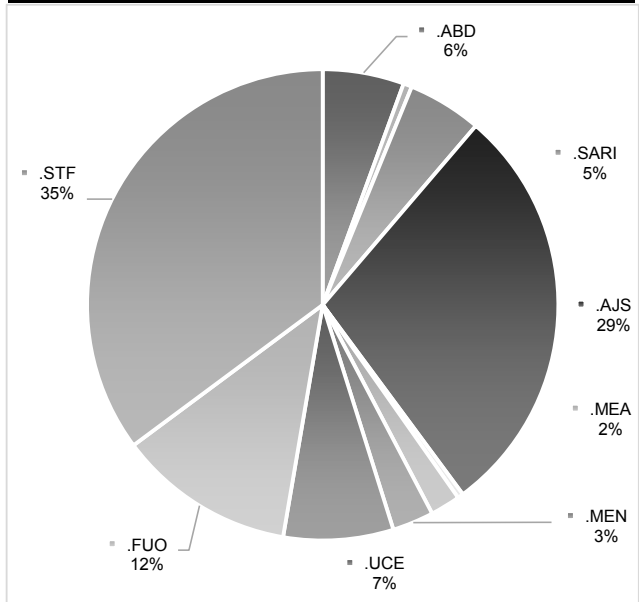
Completeness and Timeliness



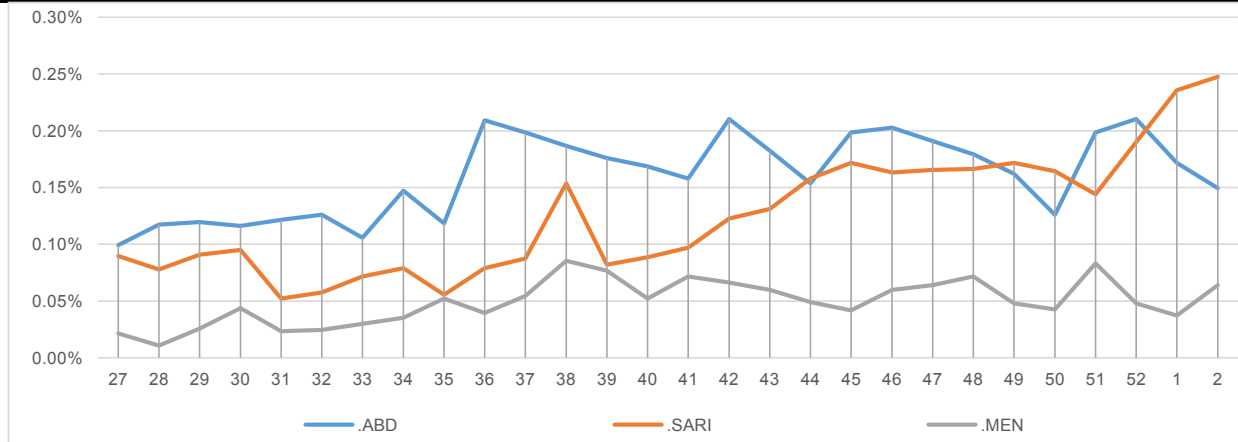
Percentage of EWARN Syndromes < 5Y



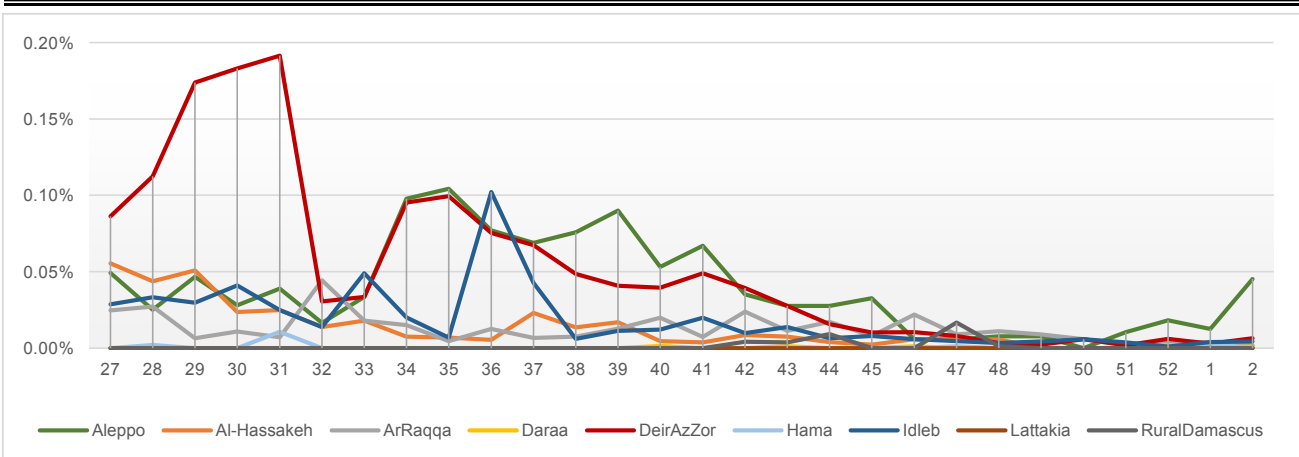
Percentage of EWARN Syndromes > 5Y



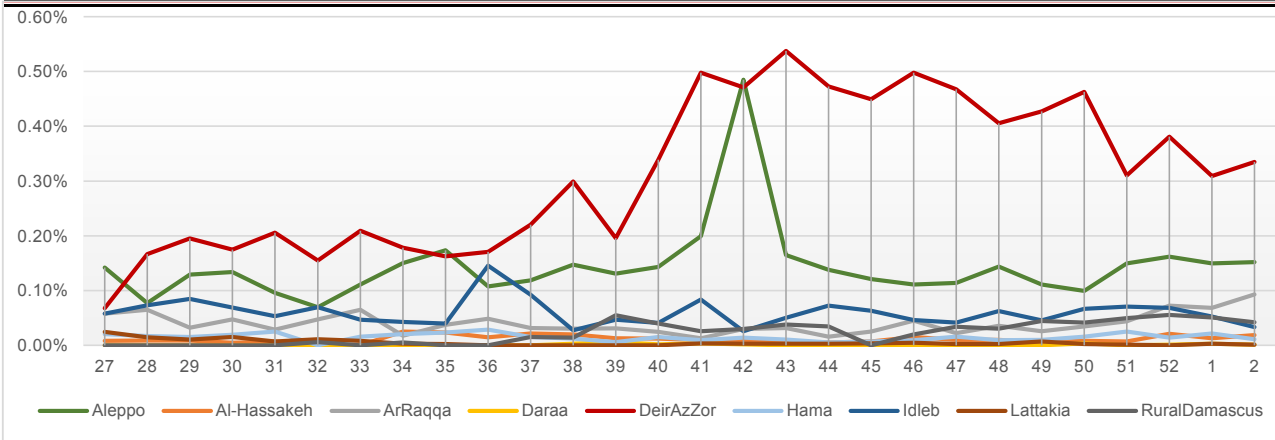
Trends for Essential priority diseases in 9 governorates – Epi week 27-2014 to Epi week 2 - 2015



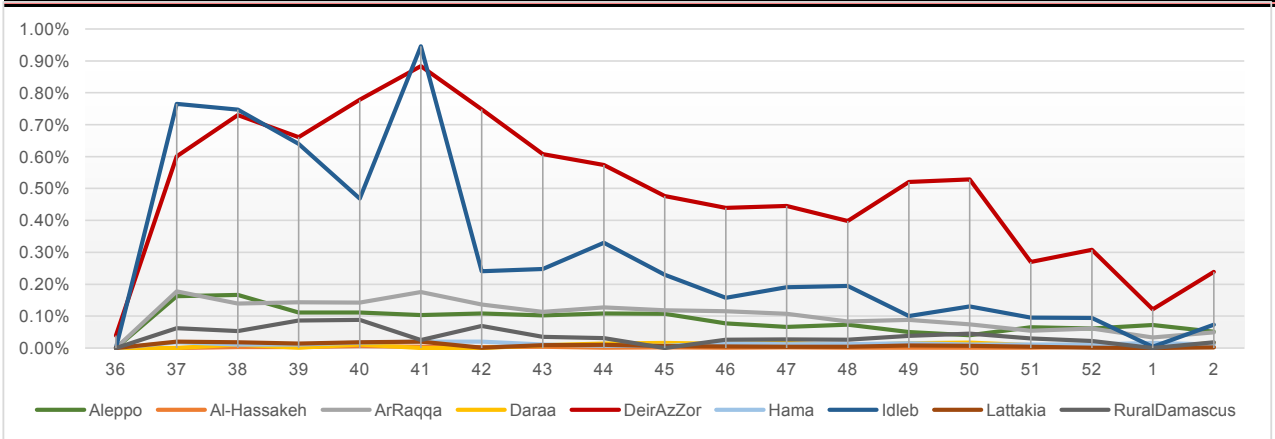
Proportional Morbidity of suspected Measles by Governorate, Epi Week 2 - 2015



Proportional Morbidity of suspected AJS by Governorate, Epi Week 2 - 2015



Proportional Morbidity of suspected STF by Governorate, Epi Week 2 - 2015



Number of cases that EWARN observes by age & geographical area for Epi week 2 - 2015

Governorate		ABD	AWD	AJS	SARI	AFP	MEA	MEN	UCE	UXD	FUO	LEISH	STF	OTHER	TOTAL
Aleppo	< 5	22	0	57	5	1	25	5	2	0	13	141	7	9844	24642
	> 5	13	0	84	1	0	17	6	13	2	39	413	67	13865	
AlHasakeh	< 5	10	0	13	4	0	0	0	0	0	0	120	1	761	2423
	> 5	7	0	4	7	0	1	0	0	0	1	194	3	1297	
ArRaqqqa	< 5	7	3	34	0	3	2	9	4	0	0	85	4	6512	15933
	> 5	16	5	52	2	1	0	14	14	0	20	224	30	8892	
Daraa	< 5	0	5	1	0	0	1	0	0	0	1	0	0	1320	3303
	> 5	0	1	0	0	0	0	0	0	0	0	0	0	1974	
DeirEzZor	< 5	32	0	220	75	2	5	14	8	0	56	74	75	10336	17790
	> 5	8	0	91	23	1	1	4	11	1	56	94	50	6553	
Hama	< 5	8	0	3	29	0	0	0	0	0	13	73	6	1203	4069
	> 5	8	0	7	9	1	0	0	0	0	6	137	11	2555	
Idleb	< 5	4	0	12	67	1	2	3	9	0	3	28	2	6939	19988
	> 5	5	0	19	10	1	2	5	37	0	2	114	2	12721	
Lattakia	< 5	0	0	0	0	0	0	0	0	0	0	0	0	483	1464
	> 5	0	0	1	0	0	0	0	0	0	0	0	0	980	
Rural Damascus	< 5	0	0	5	0	0	0	0	4	0	0	0	0	1013	3305
	> 5	0	0	34	0	0	0	0	2	0	0	0	0	2247	
TOTAL	< 5	83	8	345	180	7	35	31	27	0	86	521	95	38411	92917
	> 5	57	6	292	52	4	21	29	77	3	124	1176	163	51084	
Grand total		140	14	637	232	11	56	60	104	3	210	1697	258	89495	

Number and distribution of alerts reported in Epi-week

2 - 2015

Disease	Alert threshold	#HF reach threshold	# Cases	The most affected Communities-Districts
AFP	1	5	5	Ar Raqqa 3 - Al Hasakeh 1 - Al Bab 1
MEA	1	42	56	Menbij 20 - Al Baba 4 -Ain Alarab 3 - Jarablus 2 -Abu Kamal 2 - Deir ez zor 2 - Harim 2 - Al Hasakeh 1 - Ariha 1 - Jisr AshShugur 1 - Jebel Saman1 - Azaz 1 - Tall Abyad1- Daraa1
AJS	5	42	637	AlMayadin 12 - Abu Kamal 7 - Ar Raqqa 5 - Al Bab 4 - Jebel Saman 4 - Deir ez zor 4 - Rural Damascus 3 - Tall Abyad 1 - Azaz 1 - Al Hasakeh 1
STF	5	25	431	AlMayadin 11 - Deir ez zor 4 - Harim 4 - Daraa 2 - Menbij 1 - Rural Damascus 1 - Abu Kamal 1 - Ar Raqqa 1
ABD	5	0	140	
SARI	5	11	232	Harim 4 - Abu Kamal 2 - Al Mayadin 2 - Jisr AshShugur 1 - AsSuqaylabiyah 1 -Deir ez zor 1
MEN	5	2	60	Al Mayadin 1 - Ar Raqqa 1
(LEISH) UCE	50	4	1567	Al Hasakeh 1 - Jebel Saman 1 - Tall Abyad 1 - Harim 1
(Lice and Scabies)	1 cluster			Aleppo city and east rural

Response Activities

1- Distribution of vaccine refrigerators , electrical generators for each governorate, and a new cold chains for all DLOs and FLOs. DLOs ongoing on stool samples collection for all AFP cases.

2- Bronchiolitis outbreak investigation in west rural of Aleppo and Atmeh camps, and provision of nebulizers and medications for health facilities their . for more details, please see the extension.

3- Prepare and publish posters and fliers about :

- EWARN case definitions
- Contagious diseases and poliomyelitis prevention ways
- Water treatment at home and safe storage

4- Preparation a workshop about WASH and health situation in Deir ez zor governorate

5- Sharing Leishmaniasis data with MENTOR Initiative for proper response

ABD=Acute Bloody Diarrhea

AWD=Acute Watery Diarrhea

AFP=Acute Flaccid Paralysis

AJS=Acute Jaundice Syndrome

SARI= Severe Acute Respiratory Illness

UXD=Unexplained Death

FUO=Fever Of Unknown Origin

MEA=suspected Measles

MEN= suspected Meningitis

UCE=Unexplained Cluster Of Health Events