

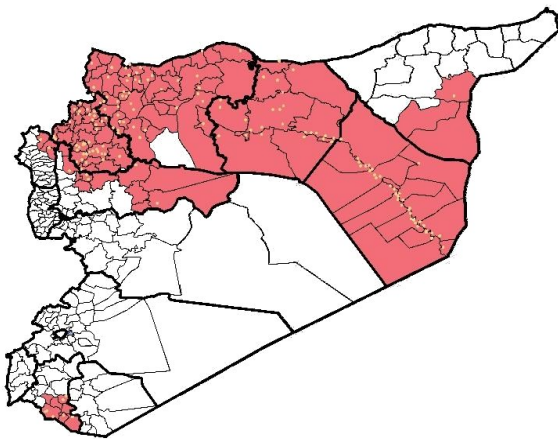
Highlights

- EWARN referral Laboratory was launched in Al Atarib town, in order to confirm diagnosis of measles and AJS outbreaks.
- 182 (field level officers) FLOs have been added to cover 376 sentinel sites.
- During Epi-week no 4 2015; 97.1% (365/376) of the health facilities across 9 Governorates provided surveillance data, 97.1% of reporting sites submitted the weekly reports on time .
- 25 new health facilities were added to the sentinel sites and sent reports this week: 12 in Aleppo, 7 in Al Hasakeh , 4 in Ar Raqqa, 1 in Deir ez zor and 1 in Daraa.
- The total number of consultations reported during the reporting week was 119522 (including 40% children under the age of five) compared to 103904 consultations during week 3, 2015.
- The leading cause of morbidity was AJS (Acute Jaundice Syndrome), with over 762 cases, the highest alerts reported was in Al Mayadin district (12 alerts).

- 29 measles cases reported in this week, the highest alerts was reported in Menbij district (7 alerts).
- In Epi week 4, 6 AFP (Acute Flaccid Paralysis) cases were investigated in these districts: Abu Kamal (3) - Al thwarah (1) - Tall Abyad (1) and Jebel Saman (1), investigation and sampling for 15 AFP cases were conducted since the beginning of 2015 up to date. See weekly Poliomyelitis outbreak report for more details.
- 339 cases of SARI reported in Epi Week 4, the highest alerts were reported in Idleb governorate (10 alerts).
- Common disease reported under others were URTI (upper respiratory tract infection), acute bronchiolitis, chicken pox, acute diarrhea, Brucellosis, Scabies, Lice and Cutaneous leishmaniasis
- 2820 new leishmaniasis cases reported this week, the alerts reported in 8 districts : Al Hasakeh (4) – Jebel Saman (3) - Quamishli (1) - Tall Abyad (2)- Deir ez zor (1)- Harim (1)- Al Mara (1) and AsSuqaylabiyah (1).
- a work shop about water borne diseases in Deir ez zor will be held next

EWARN Coverage

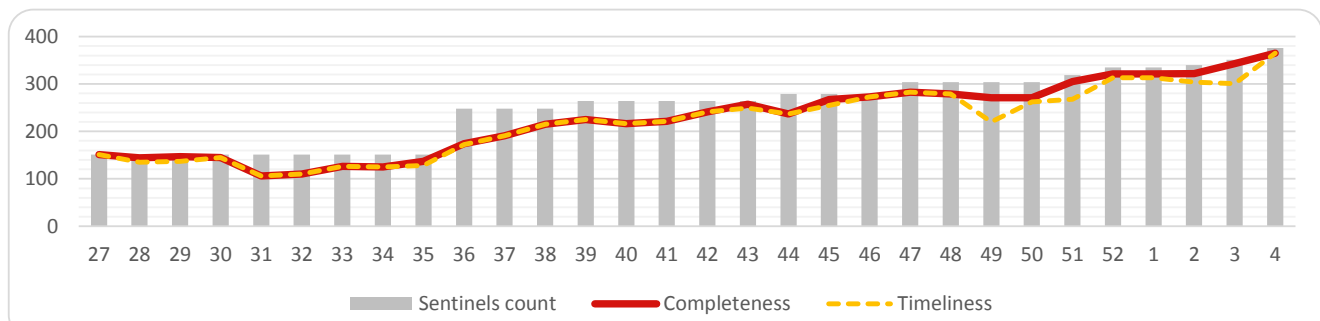
ACU covers 110 sub districts in 9 governorates



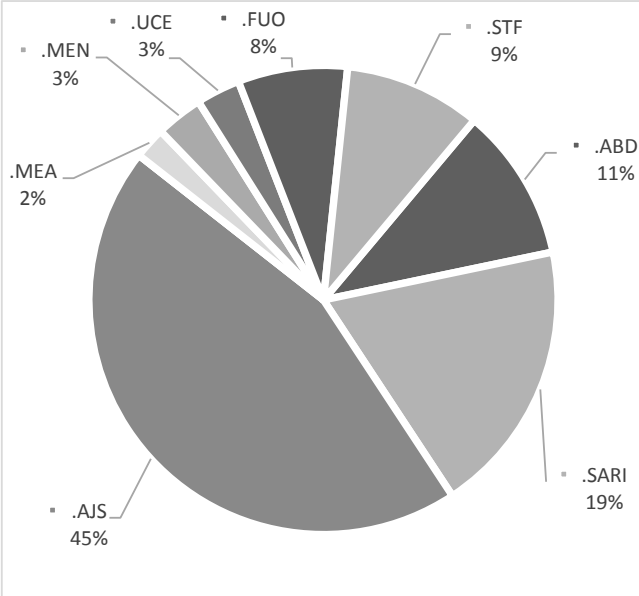
Number of sentinel sites and Total Number of Consultations

Governorate	# of sentinel sites	Reporting Sentinels	# of consultations
Aleppo	113	110	31382
Al-Hassakeh	28	28	3460
ArRaqqa	77	77	19378
Daraa	8	8	4859
DeirAzZor	60	58	18380
Hama	12	11	5358
Idleb	64	60	29694
Lattakia	6	5	2068
R.Damascus	8	8	4412
Grand total	376	365	118991

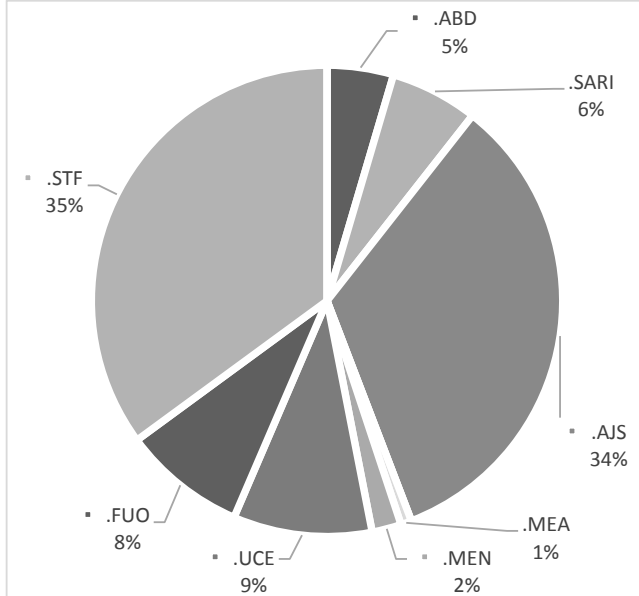
Completeness and Timeliness



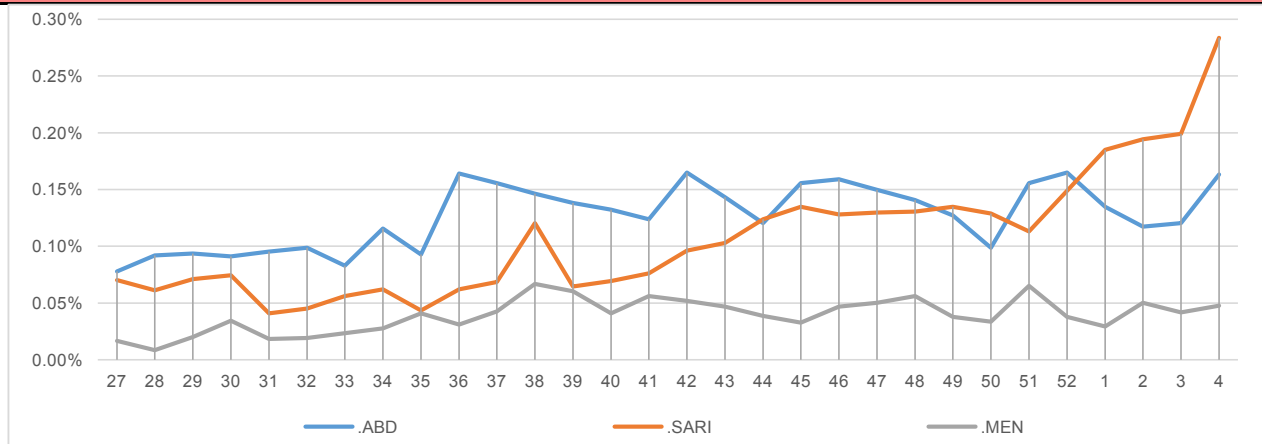
Percentage of EWARN Syndromes < 5Y



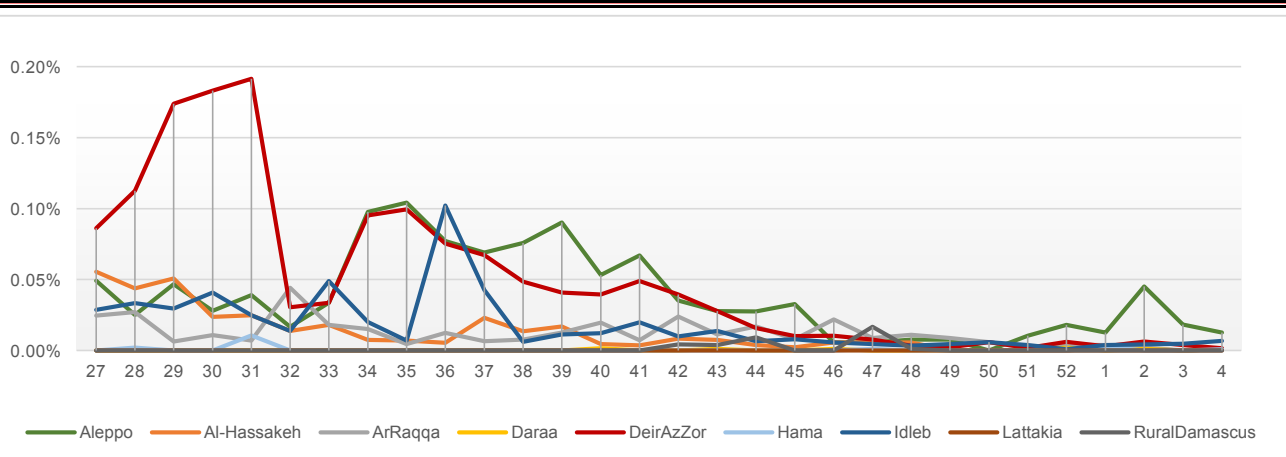
Percentage of EWARN Syndromes > 5Y



Trends for essential priority diseases in 9 governorates – Epi week 27-2014 to Epi week 4 - 2015

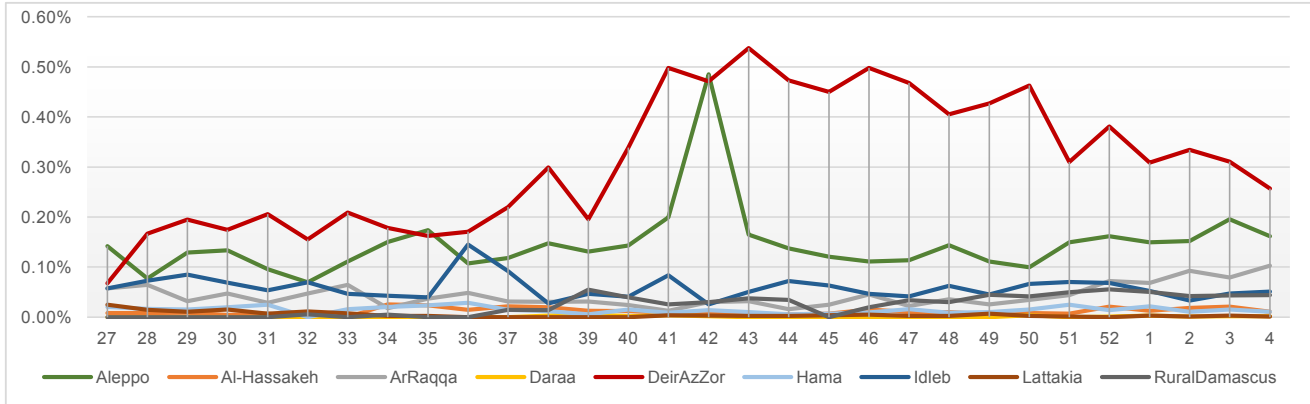


Proportional Morbidity of suspected Measles by Governorate, Epi Week 4 - 2015



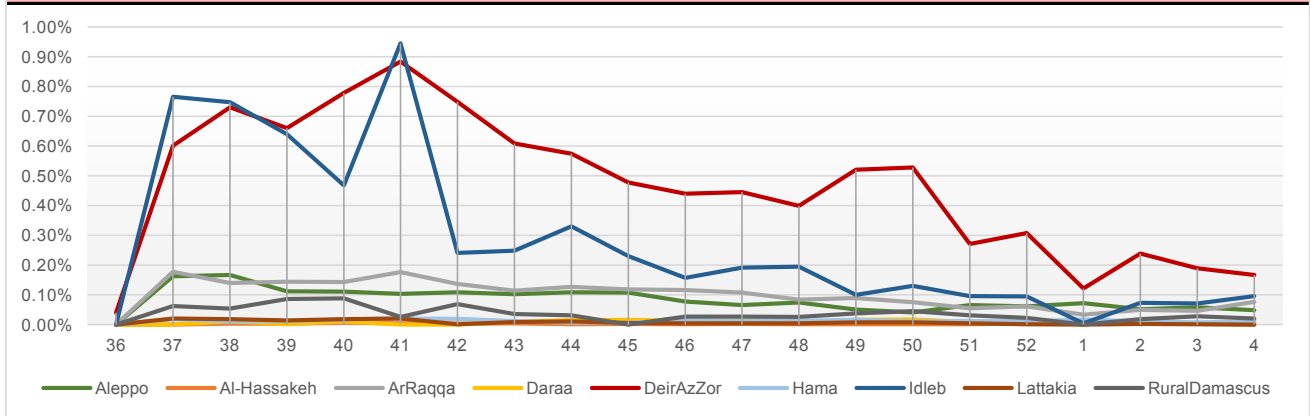
Proportional Morbidity of suspected AJS by Governorate, Epi Week

4 - 2015



Proportional Morbidity of suspected STF by Governorate, Epi Week

4 - 2015



Number of cases that EWARN observes by age & geographical area for Epi week

4 - 2015

Governorate		ABD	AWD	AJS	SARI	AFP	MEA	MEN	UCE	UXD	FUO	LEISH	STF	OTHER	TOTAL
Aleppo	< 5	25	0	103	46	0	12	8	12	4	49	152	21	12838	31382
	> 5	21	0	89	6	0	3	13	38	1	19	392	36	17494	
AlHasakeh	< 5	13	0	10	3	0	1	0	0	0	1	280	0	1009	3460
	> 5	2	0	3	6	0	0	0	0	0	2	459	0	1671	
ArRaqqa	< 5	9	0	51	12	0	1	8	45	0	2	148	14	7937	19378
	> 5	25	0	71	1	0	0	12	0	0	19	466	76	10481	
Daraa	< 5	6	0	1	1	0	1	0	0	0	1	0	4	2065	4859
	> 5	0	0	1	0	0	0	0	0	0	0	0	10	2769	
DeirEzZor	< 5	43	0	214	57	0	1	8	2	3	25	126	45	10261	18380
	> 5	24	0	92	28	0	1	2	4	5	37	149	153	7100	
Hama	< 5	6	0	3	33	0	0	0	0	0	6	117	0	2097	5358
	> 5	6	0	10	5	0	1	0	0	0	7	148	10	2909	
Idleb	< 5	4	0	30	129	0	5	6	35	1	4	86	15	10366	29694
	> 5	10	0	31	12	0	3	0	60	0	7	297	98	18495	
Lattakia	< 5	1	0	1	0	0	0	0	0	0	0	0	0	574	2068
	> 5	0	0	0	0	0	0	0	0	0	0	0	0	1492	
Rural Damascus	< 5	0	0	8	0	0	0	0	4	0	0	0	8	1442	4412
	> 5	0	0	44	0	0	0	0	3	0	1	0	16	2886	
TOTAL	< 5	107	0	421	281	0	21	30	98	8	88	909	107	48589	118991
	> 5	88	0	341	58	0	8	27	105	6	92	1911	399	65297	
Grand total		195	0	762	339	0	29	57	203	14	180	2820	506	113886	

Disease	Alert threshold	#HF reach threshold	# Cases	The most affected Communities-Districts
AFP	1	6	6	Abu Kamal 3 - Al Thwarah 1 - Tall Abyad 1 - Jebel Saman 1
MEA	1	22	29	Menbij 7 - Jebel Saman 3- Harim 2 - MaarratAnNuman 2- Al Baba 1 - Jarablus 1- Deir ez zor 1 - Al Mayadin 1 - Al Hasakeh 1- AsSuqaylabiyah 1- Daraa 1 - Ar Raqqa 1
AJS	5	56	762	AlMayadin 12 - Ar Raqqa 11- Abu Kamal 7 -Rural Damascus 5- Menbij 5 - Deir ez zor 4 - Azaz 3- Al Bab 2-Harim 2 - Jebel Saman 1 - Tall Abyad 1 - Al Hasakeh 1 - Jarablus 1- Ain Al Arab 1
STF	5	28	506	AlMayadin 8 - Harim 5- Ar Raqqa 5 - Deir ez zor 3 - Rural Damascus 2 - Idleb 1 - Azaz 1 - Abu Kamal 1 - Jebel Saman 1 - Daraa 1
ABD	5	6	195	Azaz 2- Deir ez zor 1 - AlMayadin 1 - Abu Kamal 1 - Daraa 1
SARI	5	18	339	MaarratAnNuman 4 - Ariha 3 -Harim 2 - Jebel Saman 2- Ar Raqqa 1 - Abu Kamal 1 - Jisr AshShugur 1 - AsSuqaylabiyah 1-AsSalamiyeh 1 - Al Bab 1- Al Mayadin 1
MEN	5	1	57	Jebel Saman 1
(LEISH) UCE	50	14	2080	Al Hasakeh 4 - Jebel Saman 3 - Tall Abyad 2 - Al Mara 1 - Harim 1 - Quamishli 1 - Deir ez zor 1 - AsSuqaylabiyah 1
(Lice and Scabies)	1 cluster			Aleppo governorate and latakia rural

Response Activities

- 1- EWARN referral Laboratory was launched in Al Atarib town, in order to confirm diagnosis of measles and AJS outbreaks.
- 2- Preparation and participation in a workshop about water borne diseases and WASH in Deir ez zor governorate
- 3- The Response team met the health workers, and distribute the AFP surveillance guidance and EWARN field manual in many health facilities:
 - Al Atarib Hospital
 - Hadir Hospital
 - Kafr Naha Hospital
 - Ambulance system center in Aleppo
 - Many private clinics in : Tall Eddaman , Iss , Hawir Elis and Burda
- 4- Weekly sharing for Leishmaniasis data with MENTOR Initiative for proper response

ABD=Acute Bloody
Diarrhea

AWD=Acute Watery
Diarrhea

AFP=Acute Flaccid
Paralysis

AJS=Acute Jaundice
Syndrome

SARI= Severe Acute
Respiratory Illness

UXD=Unexplained
Death

FUO=Fever Of Unknown
Origin

MEA=suspected Measles

MEN= suspected
Meningitis

UCE=Unexplained Cluster Of
Health Events