

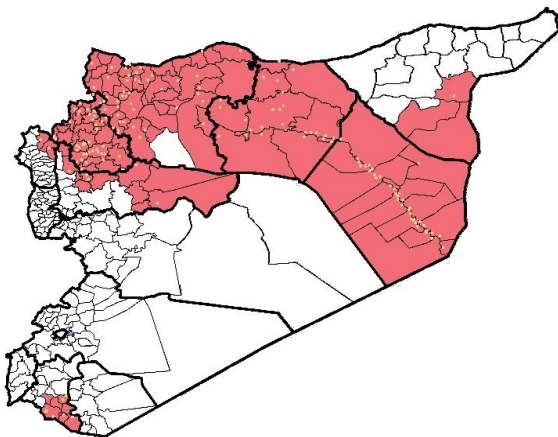
**Highlights**

- EWARN referral Laboratory was launched in Al Atarib town, in order to confirm diagnosis of measles and AJS outbreaks.
- More than 180 (field level officers) FLOs have been added to cover about 380 sentinel sites.
- During Epi-week no 5 2015; 99.2% (382/379) of the health facilities across 9 Governorates provided surveillance data, 91.8% of reporting sites submitted the weekly reports on time .
- 6 new health facilities were added to the sentinel sites and sent reports this week: 3 in MaarratAnNuman , 1 in Dana , 1 in Quamishli and 1 in Al Hasakeh.
- The total number of consultations reported during the reporting week was 122400 (including 40% children under the age of five) compared to 118991 consultations during week 4, 2015.
- The leading cause of morbidity was AJS (Acute Jaundice Syndrome), with over 791 cases, the highest alerts were reported in Al Mayadin (13) and in Ar Raqqa (13).
- 24 measles cases reported in this week, the highest alerts were reported in Menbij district (4 alerts).

- In Epi week 5, 3 AFP (Acute Flaccid Paralysis) cases were investigated in these districts: Abu Kamal (1) – Al Mayadin (1) and Jebel Saman (1), investigation and sampling for 18 AFP cases were conducted since the beginning of 2015 up to date. See weekly Poliomyelitis outbreak report for more details.
- 440 cases of SARI reported in Epi Week 5, the highest alerts were reported in Idleb governorate (9 alerts), clear increase in reported cases within the last 3 weeks
- Common disease reported under others were URTI (upper respiratory tract infection), acute bronchiolitis, chicken pox, acute diarrhea, Brucellosis, Scabies, Lice and Cutaneous leishmaniasis.
- 2230 new leishmaniasis cases reported this week, the alerts reported in 5 districts: Al Hasakeh (4) – Jebel Saman (2) - Tall Abyad (1)- Deir ez zor (1) and Harim (1).
- A work shop was held about health situation and water borne diseases in Deir ez zor, for more details [please see the extension.](#)

**EWARN Coverage**

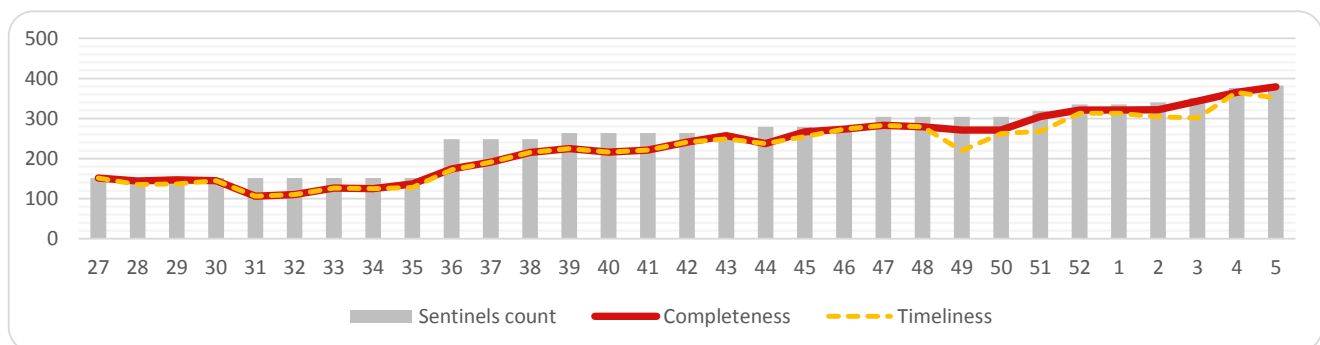
ACU covers 110 sub districts in 9 governorates



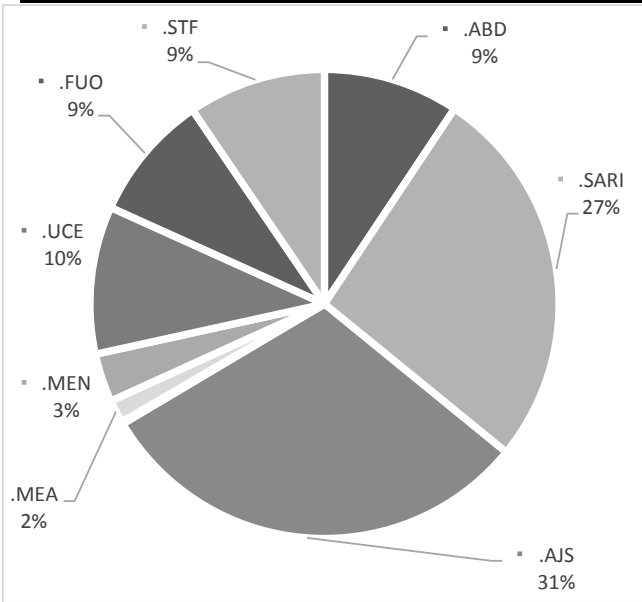
**Number of sentinel sites and Total Number of Consultations**

Governorate	# of sentinel sites	Reporting Sentinels	# of consultations	
Aleppo	114	111	97.4%	32645
Al-Hassakeh	28	35	125.0%	3797
ArRaqqa	77	75	97.4%	17548
Daraa	8	8	100.0%	6585
DeirAzZor	60	57	95.0%	18786
Hama	12	12	100.0%	5771
Idleb	69	68	98.6%	30689
Lattakia	6	5	83.3%	2059
R.Damascus	8	8	100.0%	4520
<b>Grand total</b>	<b>382</b>	<b>379</b>	<b>99.2%</b>	<b>122400</b>

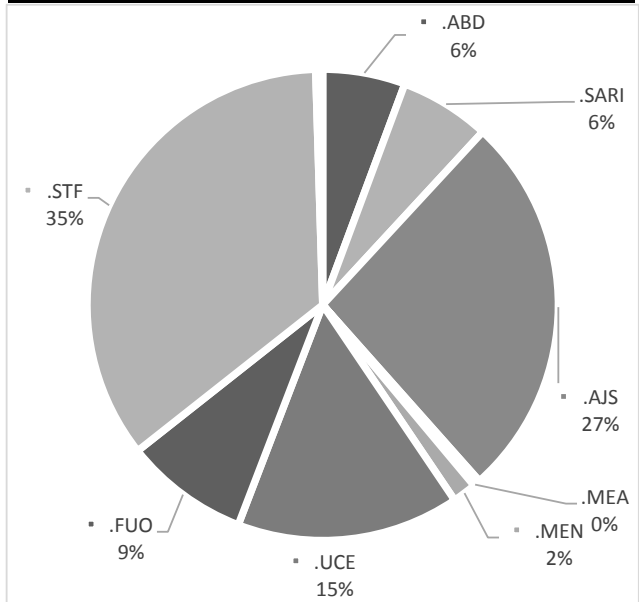
**Completeness and Timeliness**



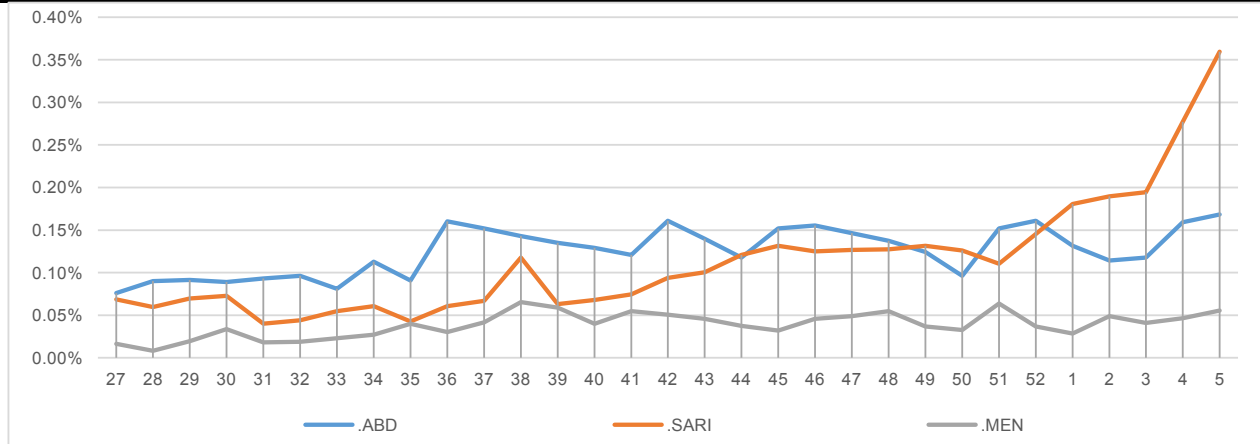
**Percentage of EWARN Syndromes < 5Y**



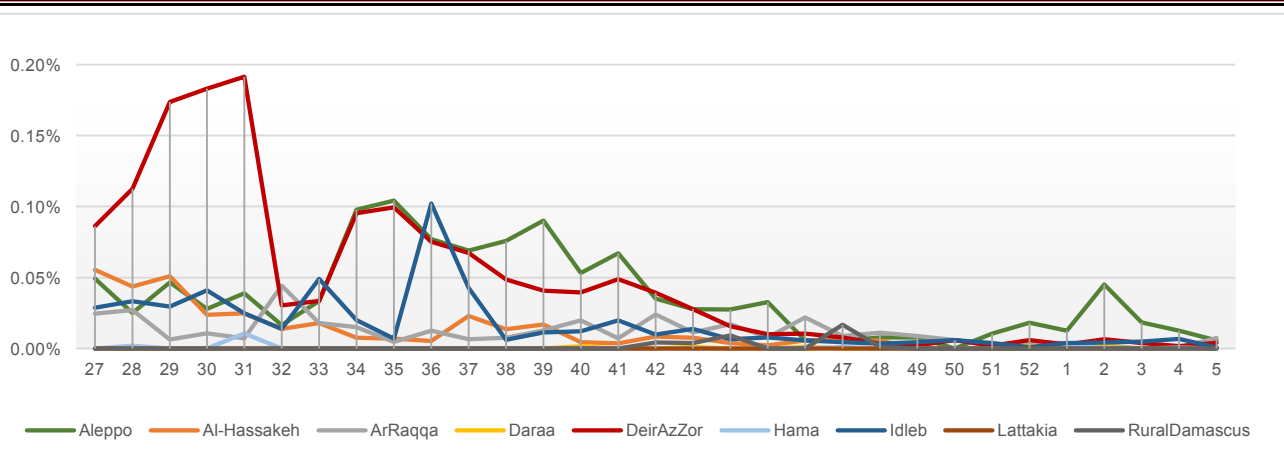
**Percentage of EWARN Syndromes > 5Y**



**Trends for essential priority diseases in 9 governorates – Epi week 27-2014 to Epi week 5 - 2015**

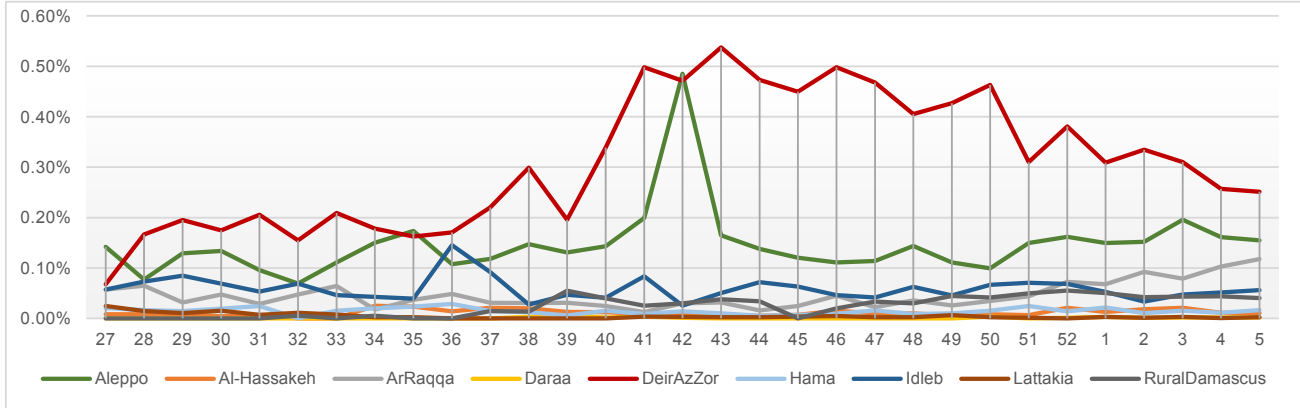


**Proportional Morbidity of suspected Measles by Governorate, Epi Week 5 - 2015**



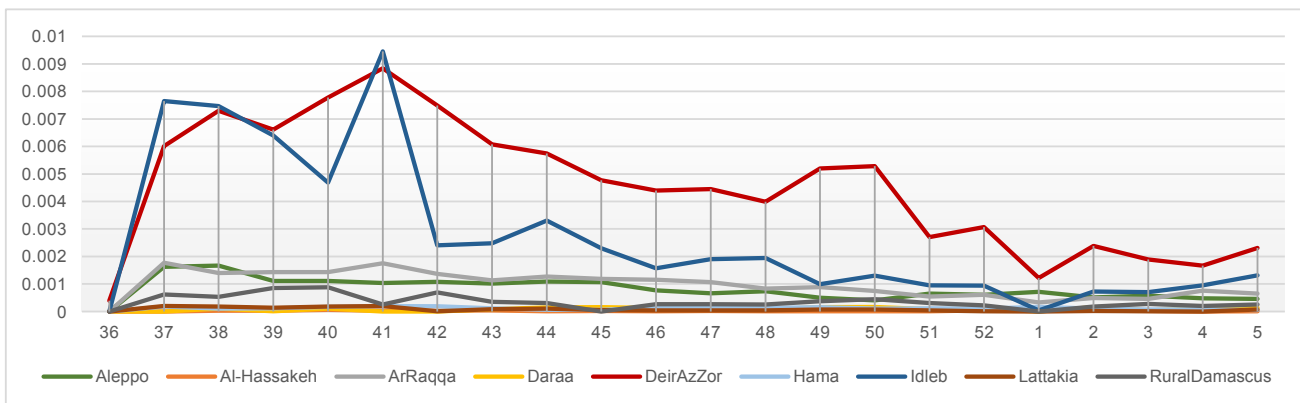
**Proportional Morbidity of suspected AJS by Governorate, Epi Week**

**5 - 2015**



**Proportional Morbidity of suspected STF by Governorate, Epi Week**

**5 - 2015**



**Number of cases that EWARN observes by age & geographical area for Epi week**

**5 - 2015**

Governorate		ABD	AWD	AJS	SARI	AFP	MEA	MEN	UCE	UXD	FUO	LEISH	STF	OTHER	TOTAL
Aleppo	< 5	29	0	96	64	0	7	18	18	1	66	109	19	13411	32383
	> 5	11	0	92	26	0	0	10	43	0	32	298	37	17996	
AlHasakeh	< 5	8	0	10	9	0	1	0	0	0	0	214	0	1251	3797
	> 5	6	0	3	6	0	0	0	0	0	1	369	1	1918	
ArRaqqqa	< 5	16	0	61	42	1	7	6	35	0	4	100	13	7186	17337
	> 5	28	1	82	6	3	2	11	0	0	19	316	66	9332	
Daraa	< 5	2	11	1	0	0	1	0	0	0	1	0	2	2885	6585
	> 5	0	6	1	0	0	0	0	3	1	0	0	15	3656	
DeirEzZor	< 5	42	0	198	63	0	4	13	2	0	19	157	64	10365	18774
	> 5	13	0	107	27	0	1	1	2	0	41	134	217	7304	
Hama	< 5	12	0	3	41	0	0	0	0	0	15	64	0	2228	5772
	> 5	13	0	17	10	1	0	0	0	0	24	133	6	3205	
Idleb	< 5	13	0	24	130	1	1	7	79	1	6	106	20	10536	30307
	> 5	12	0	44	14	0	0	2	168	0	6	228	140	18769	
Lattakia	< 5	1	0	1	0	0	0	0	0	0	0	0	4	637	2060
	> 5	0	0	2	0	0	0	0	0	0	0	2	5	1408	
Rural Damascus	< 5	0	0	8	0	0	0	0	0	0	4	0	3	1316	4520
	> 5	0	0	41	2	0	0	0	8	0	2	0	28	3108	
TOTAL	< 5	123	11	402	349	2	21	44	134	2	115	750	125	49815	121535
	> 5	83	7	389	91	4	3	24	224	1	125	1480	515	66696	
Grand total		206	18	791	440	6	24	68	358	3	240	2230	640	116511	

**Number and distribution of alerts reported in Epi-week**
**5 - 2015**

Disease	Alert threshold	#HF reach threshold	# Cases	The most affected Communities-Districts
AFP	1	3	3	Abu Kamal 1 - Al Mayadin 1 - Jebel Saman 1
MEA	1	16	24	Menbij 4 - Ar Raqqa 2 - Abu Kamal 1- Jisr AshShugur 1 - Azaz 1- Al Baba 1 - Tall Abyad 1- Deir ez zor 1 - Al Mayadin 1 - Al Hasakeh 1- Jarablus 1- Daraa 1
AJS	5	57	791	Al Mayadin 13 - Ar Raqqa 13 - Rural Damascus 5 - Deir ez zor 5 - Menbij 4 - Al Bab 4 - Abu Kamal 3 - Jebel Saman 3 - Azaz 2- Harim 2 - Tall Abyad 1 - MaarratAnNuman 1- Idleb1
STF	5	37	640	AlMayadin 11 - Harim 7- Ar Raqqa 5 - Deir ez zor 5 - Rural Damascus 4 - Azaz 2 - Daraa 2- Lattakia 1
ABD	5	7	206	Ar Raqqa 3 -AlMayadin 2 - Muhradah 1 - MaarratAnNuman 1
SARI	5	22	440	Ar Raqqa 6 - MaarratAnNuman 3 - Ariha 2 - Al Mara 2 - Jebel Saman 2- Jisr AshShugur 2 - AsSuqaylabiyah 2 - Al Bab 2- AsSalamiyeh 1
MEN	5	1	68	Jebel Saman 1
(LEISH) UCE	50	9	2230	Al Hasakeh 4 - Jebel Saman 2 - Tall Abyad 1 -Harim 1 -Deir ez zor 1
(Lice and Scabies )	1 cluster			Aleppo governorate and Lattakia rural

**Response Activities**

- 1- EWARN referral Laboratory was launched in Al Atarib town, in order to confirm diagnosis of measles and AJS outbreaks.
- 2- Preparation and participation in a workshop about health situation in Deir ez zor governorate, [for more details please see the extension.](#)
- 3- Weekly sharing for Leishmaniasis data with MENTOR Initiative for proper response
- 4- Response of Lice and Scabies outbreak in Aleppo city : MOH provided proper medications with the participation of many NGOs who also supplied education materials in the city.

ABD=Acute Bloody Diarrhea

AWD=Acute Watery Diarrhea

AFP=Acute Flaccid Paralysis

AJS=Acute Jaundice Syndrome

SARI= Severe Acute Respiratory Illness

UXD=Unexplained Death

FUO=Fever Of Unknown Origin

MEA=suspected Measles

MEN= suspected Meningitis

UCE=Unexplained Cluster Of Health Events