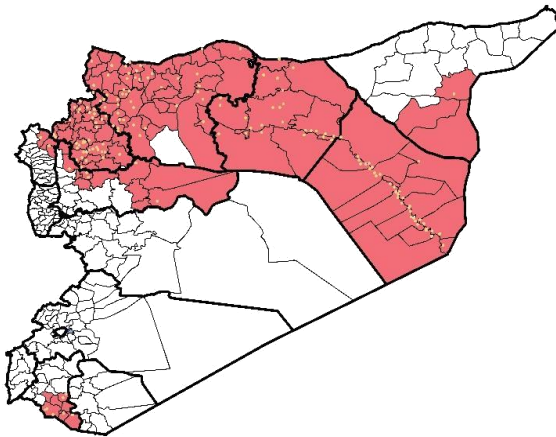


Highlights

- EWARN referral Laboratory was launched in Al Atarib town, in order to confirm diagnosis of measles and AJS outbreaks.
- 180 (field level officers) FLOs have been added to cover about 392 sentinel sites.
- During Epi-week no 6 2015; 95.2% (392/373) of the health facilities across 9 Governorates provided surveillance data, 92.8% of reporting sites submitted the weekly reports on time .
- 10 new health facilities were added to the sentinel sites and sent reports this week: 7 in Al Hasakeh , 1 in Idleb , 1 in Aleppo and 1 in Hama.
- The total number of consultations reported during the reporting week was 121559 (including 40% children under the age of five) compared to 122400 consultations during week 4, 2015.
- The leading cause of morbidity was AJS (Acute Jaundice Syndrome), with over 717 cases, the highest alerts were reported in Al Mayadin (10).
- In Epi week 6, 6 AFP (Acute Flaccid Paralysis) cases were investigated in these districts: Ar Raqqa (4) – AsSuqaylabiyah (1) and Al Mara (1), investigation and sampling for 24 AFP cases were conducted since the beginning of 2015 up to date. See weekly Poliomyelitis outbreak report for
- One AFP case was detected in east Gota, investigated but stool sample couldn't be transported to the referral lab as there is no access.
- 21 measles cases reported in this week, the highest alerts were reported in Menbij district (5 alerts). Most of the cases enrolled in a line list.
- 435 cases of SARI reported in Epi Week 6, the highest alerts were reported in Ar Raqqa district (6 alerts), clear increase in reported cases within the last 4 weeks
- Common disease reported under others were URTI (upper respiratory tract infection), acute bronchiolitis, chicken pox, acute diarrhea, Brucellosis, Scabies, Lice and Cutaneous leishmaniasis.
- 2633 new leishmaniasis cases reported this week, the alerts reported in 8 districts : Jebel Saman 3 - Ar Raqqa 2 - AsSuqaylabiyah 2- Al Mara 2 - Al Hasakeh 1 - Tall Abyad 1 -Harim 1 and Deir ez zor 1
- As part of Response team activities , an advocacy meetings and NGOs training were held in Aleppo, Idleb and Lattakia. [for more details please see the extension.](#)

EWARN Coverage

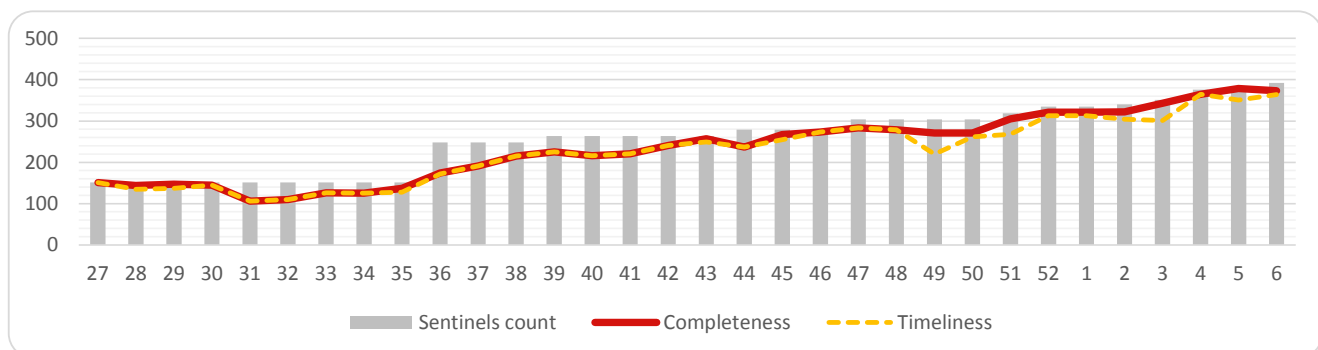
ACU covers 110 sub districts in 9 governorates



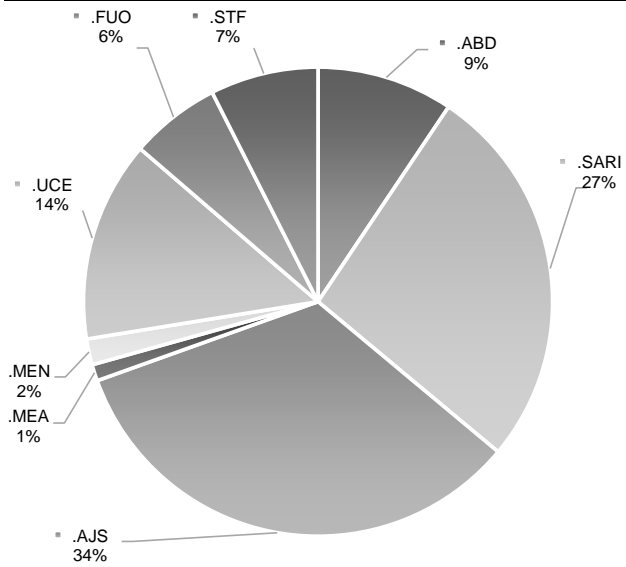
Number of sentinel sites and Total Number of Consultations

Governorate	# of sentinel sites	Reporting Sentinels	# of consultations
Aleppo	115	109	34996
Al-Hassakeh	35	35	3599
ArRaqqa	78	76	17511
Daraa	8	7	4815
DeirAzZor	60	56	19374
Hama	13	10	4989
Idleb	69	67	29709
Lattakia	6	5	2436
R.Damascus	8	8	4130
Grand total	392	373	121559

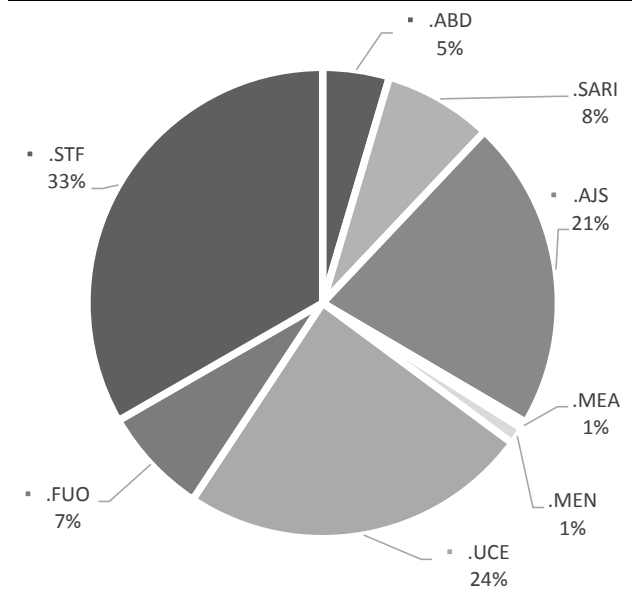
Completeness and Timeliness



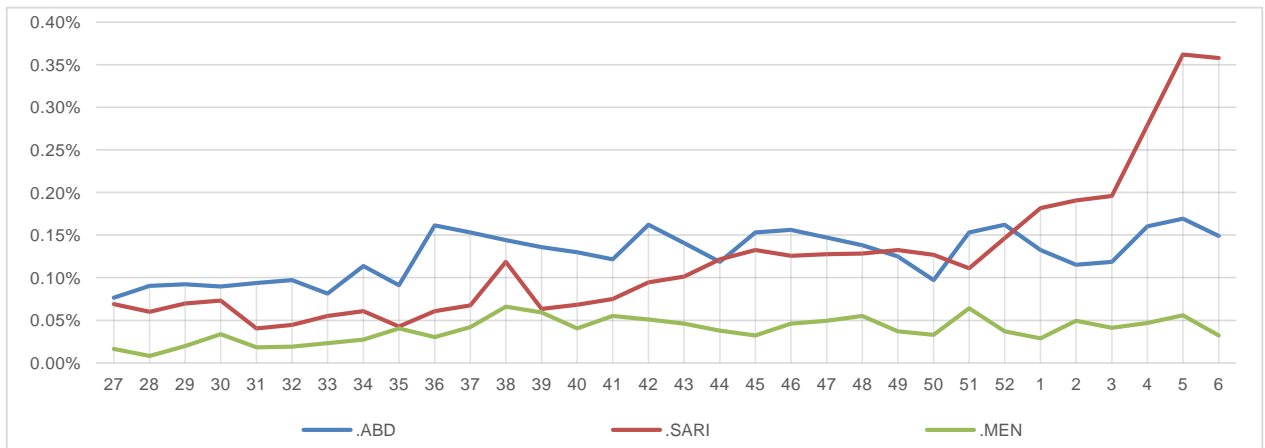
Percentage of EWARN Syndromes < 5Y



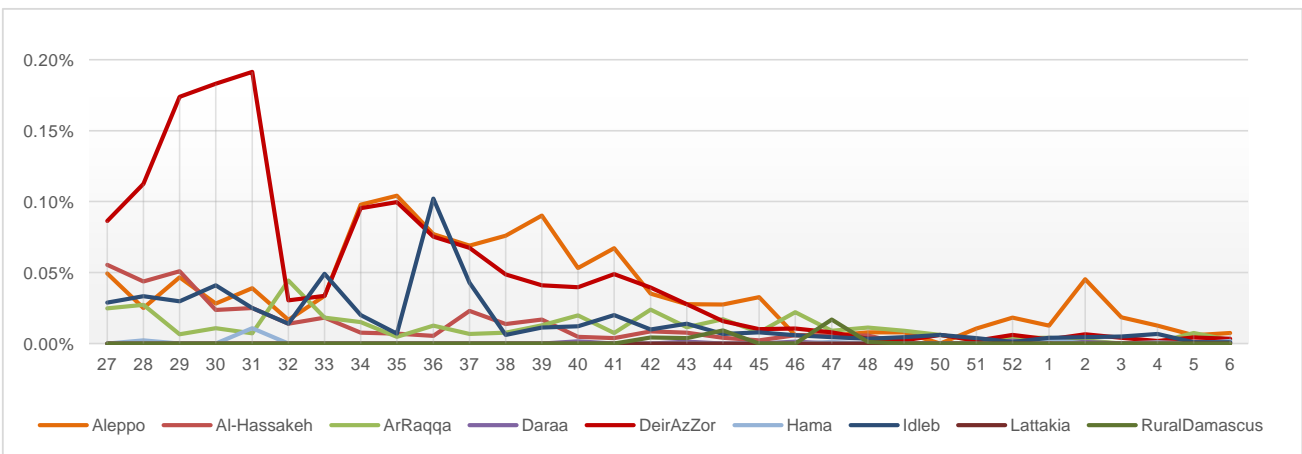
Percentage of EWARN Syndromes > 5Y



Trends for essential priority diseases in 9 governorates – Epi week 27-2014 to Epi week 6 - 2015

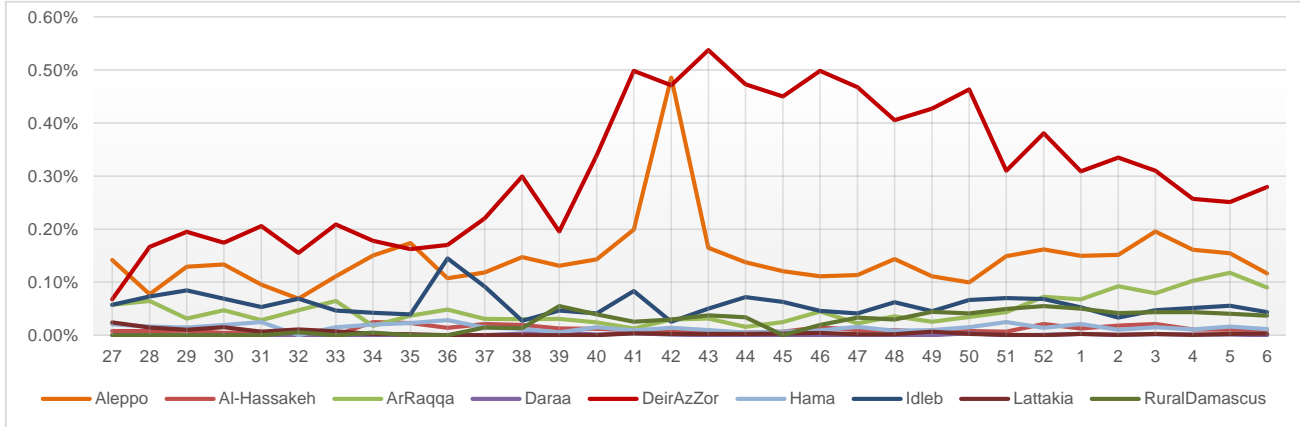


Proportional Morbidity of suspected Measles by Governorate, Epi Week 6 - 2015



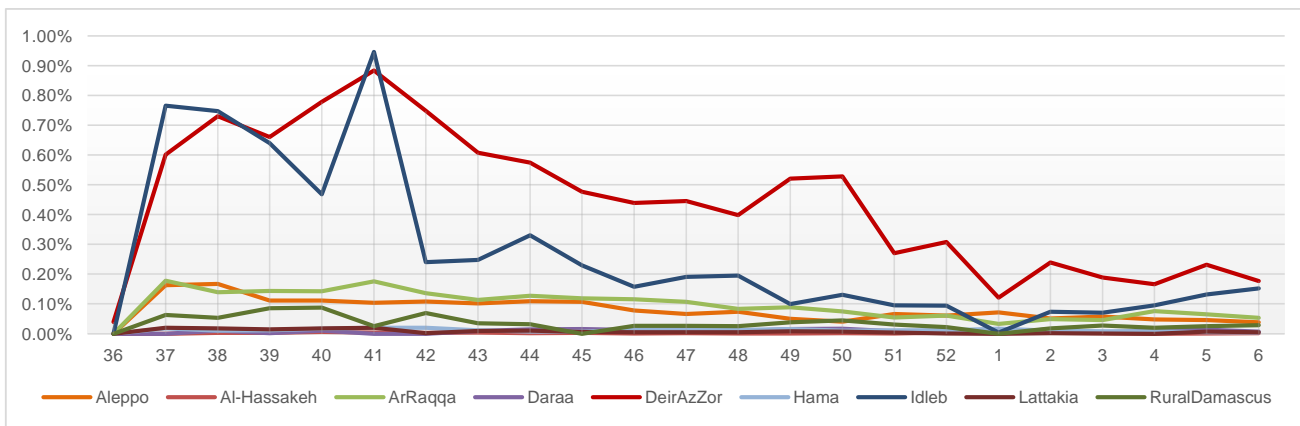
Proportional Morbidity of suspected AJS by Governorate, Epi Week

6 - 2015



Proportional Morbidity of suspected STF by Governorate, Epi Week

6 - 2015



Number of cases that EWARN observes by age & geographical area for Epi week

6 - 2015

Governorate		ABD	AWD	AJS	SARI	AFP	MEA	MEN	UCE	UXD	FUO	LEISH	STF	OTHER	TOTAL
Aleppo	< 5	41	5	87	64	0	8	9	87	1	43	135	9	14127	34794
	> 5	8	9	54	34	0	1	5	260	0	37	392	37	19341	
AlHasakeh	< 5	2	0	8	14	0	1	0	0	0	0	126	0	1284	3599
	> 5	3	0	5	8	0	0	1	0	0	0	203	2	1942	
ArRaqqqa	< 5	20	0	43	56	0	1	2	57	0	3	83	10	7229	17293
	> 5	18	0	66	7	1	2	6	0	0	17	265	55	9352	
Daraa	< 5	0	3	0	0	0	1	0	0	0	0	0	0	2073	4815
	> 5	0	0	0	0	0	0	0	5	0	0	0	8	2725	
DeirEzZor	< 5	38	0	240	46	1	3	10	2	0	23	118	43	10397	19350
	> 5	18	0	98	27	0	1	1	2	0	44	197	171	7870	
Hama	< 5	3	0	3	34	0	0	0	0	0	3	151	0	1526	5030
	> 5	7	0	11	4	1	2	0	2	0	1	421	5	2856	
Idleb	< 5	12	0	24	115	0	0	1	23	0	5	236	24	10321	29683
	> 5	10	0	29	24	0	1	3	63	0	6	304	160	18322	
Lattakia	< 5	0	0	1	0	0	0	0	0	0	0	0	1	740	2437
	> 5	1	0	3	0	0	0	0	0	0	0	1	5	1685	
Rural Damascus	< 5	0	0	7	0	0	0	0	2	0	0	0	5	1247	4130
	> 5	0	0	38	2	0	0	1	11	0	0	1	30	2786	
TOTAL	< 5	116	8	413	329	1	14	22	171	1	77	849	92	48944	121131
	> 5	65	9	304	106	2	7	17	343	0	105	1784	473	66879	
Grand total		181	17	717	435	3	21	39	514	1	182	2633	565	115823	

Disease	Alert threshold	#HF reach threshold	# Cases	The most affected Communities-Districts
AFP	1	6	6	Ar Raqqa 4- AsSuqaylabiyah 1- Al Mara 1
MEA	1	16	21	Menbij 5 - Deir ez zor 2 - Ar Raqqa 2- Quamishli 1- Jisr AshShugur 1 - Jebel Saman 1- Al Baba 1 - Al Mayadin 1- Daraa 1 -AsSuqaylabiyah 1
AJS	5	44	717	Al Mayadin 11 - Ar Raqqa 10 - Abu Kamal 6 -Rural Damascus 5- Menbij 5 - Deir ez zor 3 - Azaz 3 - Jebel Saman 1
STF	5	31	565	AlMayadin 8 - Harim 5 - Ar Raqqa 6 - Deir ez zor 4 - Rural Damascus 3 -Azaz 1 - Jebel Saman 1 - Daraa 1 - Lattakia 1- Al Mara 1
ABD	5	4	181	AlMayadin 1 - Deir ez zor 1 - Azaz 1 - Jebel Saman 1
SARI	5	26	435	Ar Raqqa 6 - Ariha 4 - Jebel Saman 3 - MaarrratAnNuman 2 - Al Mara 2 - AsSuqaylabiyah 2 - Quamishli 2 - Jisr AshShugur 1 - Idleb 1 - Harim 1 - Abu Kamal 1 - Al Bab 1
MEN	5	0	39	
(LEISH) UCE	50	13	2633	Jebel Saman 3 - Ar Raqqa 2 - AsSuqaylabiyah 2- Al Mara 2 - Al Hasakeh 1 - Tall Abyad 1 - Harim 1 -Deir ez zor 1
(Lice and Scabies)	1 cluster			Aleppo Governorates - Idleb and Lattakia rural

Response Activities

- 1- EWARN referral Laboratory was launched in Al Atarib town, in order to confirm diagnosis of measles and AJS outbreaks.
- 2- Advocacy meetings and NGOs training were held in Aleppo, Idleb and Lattakia governorates, targeted to educate for early warning alert and response network, in addition to AFP surveillance. [For more details please see the extension.](#)
- 3- Weekly sharing for Leishmaniasis data with MENTOR Initiative for proper response
- 4- Participation in the second meeting of WBD Task Force, which included:
 - Dair ez zor Health situation updates report
 - Response of the partners specially WASH sector workers
 - Several partners provided a recapitulation about their WASH on-going activities

ABD=Acute Bloody Diarrhea

AWD=Acute Watery Diarrhea

AFP=Acute Flaccid Paralysis

AJS=Acute Jaundice Syndrome

SARI= Severe Acute Respiratory Illness

UXD=Unexplained Death

FUO=Fever Of Unknown Origin

MEA=suspected Measles

MEN= suspected Meningitis

UCE=Unexplained Cluster Of Health Events