

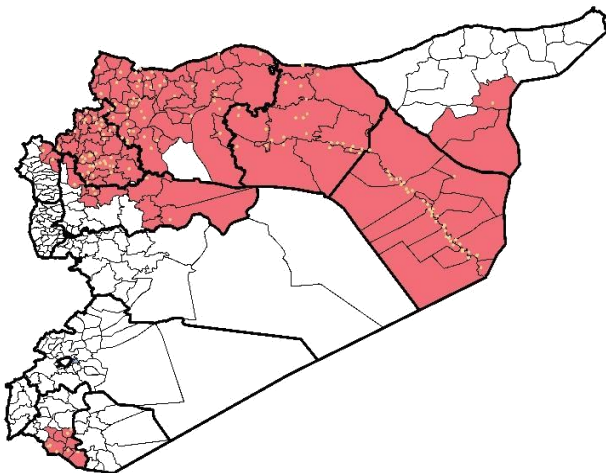
Highlights

- EWARN referral Laboratory was launched in Al Atarib town, in order to confirm diagnosis of measles and AJS outbreaks. [For more details please see the extension.](#)
- 180 (field level officers) FLOs have been added to cover about 400 sentinel sites.
- During Epi-week no 7 2015; 94.8% (400/379) of the health facilities across 9 Governorates provided surveillance data, 90% of reporting sites submitted the weekly reports on time .
- 8 new health facilities were added to the sentinel sites and sent reports this week: 3 in Azaz , 2 in Harim , 2 in As Salamiyeh and 1 in Deir ez zor.
- The total number of consultations reported during the reporting week was 123392 (including 40% children under the age of five) compared to 121559 consultations during week 6, 2015.
- The leading cause of morbidity was AJS (Acute Jaundice Syndrome), with over 704 cases, the highest alerts were reported in Al Mayadin (15).
- In Epi week 7, 5 AFP (Acute Flaccid Paralysis) cases were investigated in these districts: Idleb (1) – Harim (1), Al Mara (1), AsSuqaylabiyah (1) and in Deir ez zor(1).

- Investigation and sampling for 29 AFP cases were conducted since the beginning of 2015 up to date. See weekly Poliomyelitis outbreak report for more details.
- Another AFP case was detected in east Gota, investigated but stool sample couldn't be collected as there is no access.
- 21 measles cases reported in this week, the highest alerts were reported in Harim (4 alerts). Most of the cases enrolled in a line list.
- 470 cases of SARI reported in Epi Week 7, the highest alerts were reported in Idleb governorate (12 alerts), clear increase in reported cases within the last 5 weeks
- Common disease reported under others were URTI (upper respiratory tract infection), acute bronchiolitis, chicken pox, acute diarrhea, Brucellosis, Scabies, Lice and Cutaneous leishmaniasis.
- 2464 new leishmaniasis cases reported this week, the alerts reported in 7 districts : Jebel Saman 4 Al Hasakeh 3 - Ar Raqqa 2 - Tall Abyad 2 - AsSuqaylabiyah 1- Al Mara 1 - and Deir ez zor 1

EWARN Coverage

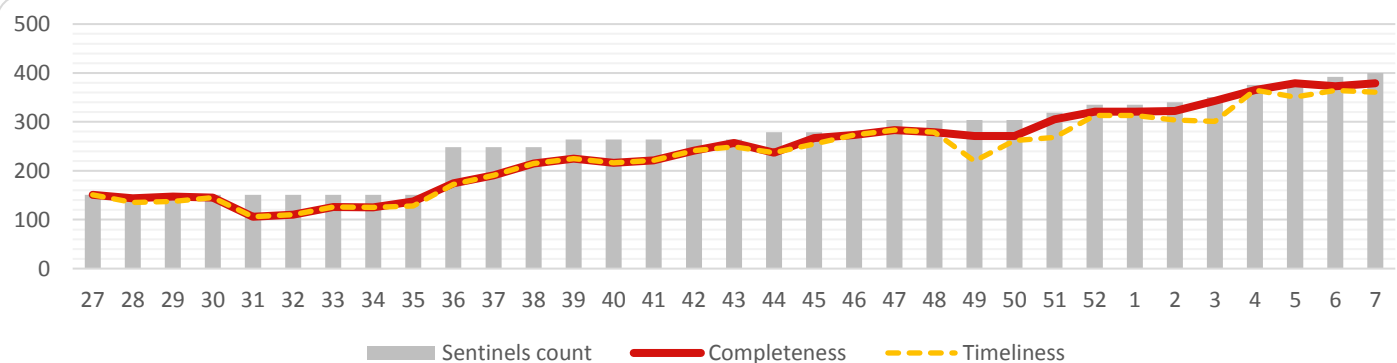
ACU covers 110 sub districts in 9 governorates



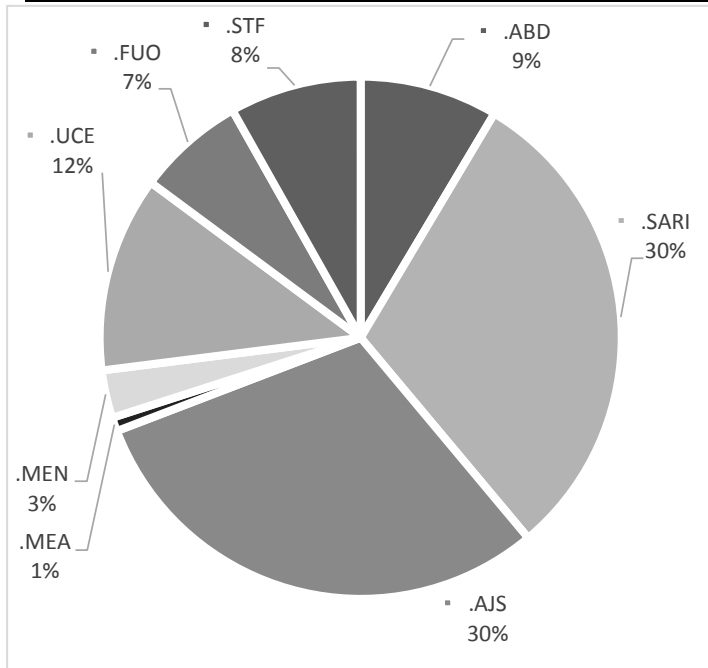
Number of sentinel sites and Total Number of Consultations

Governorate	# of sentinels	Reporting Sentinels	# of consultations
Aleppo	118	109	92.4%
Al-Hassakeh	35	35	100.0%
ArRaqqa	78	73	93.6%
Daraa	8	8	100.0%
DeirAzZor	61	57	93.4%
Hama	15	13	86.7%
Idleb	71	71	100.0%
Lattakia	6	5	83.3%
R.Damascus	8	8	100.0%
Grand total	400	379	94.8%

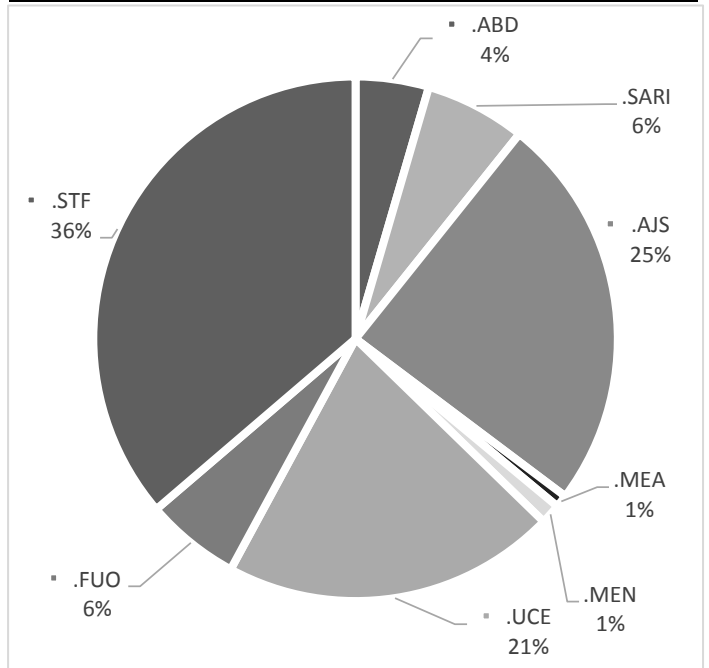
Completeness and Timeliness



Percentage of EWARN Syndromes < 5Y

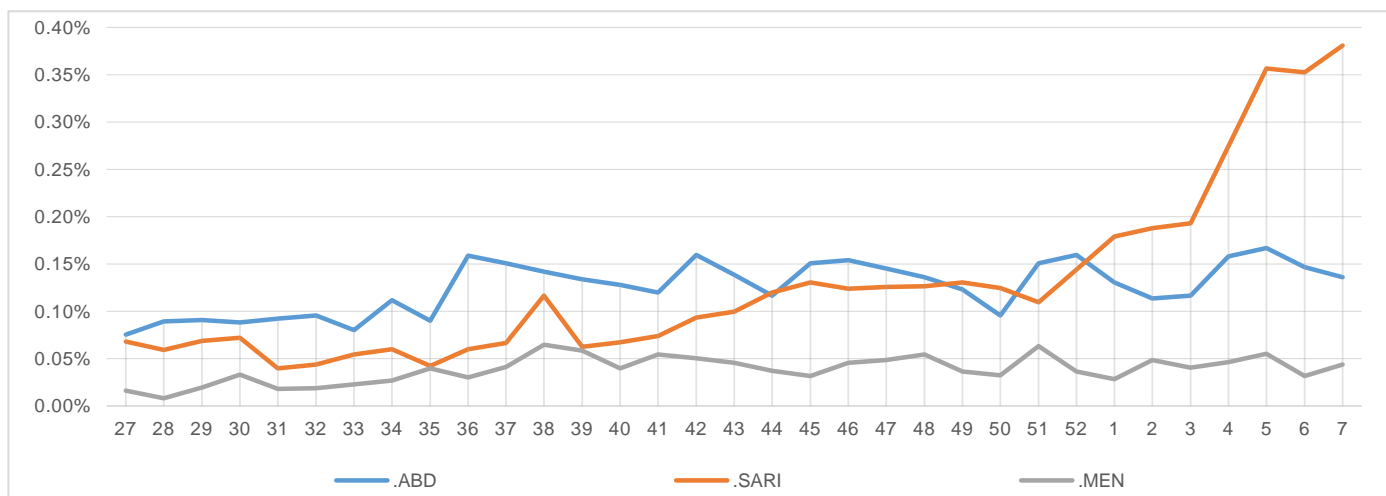


Percentage of EWARN Syndromes > 5Y



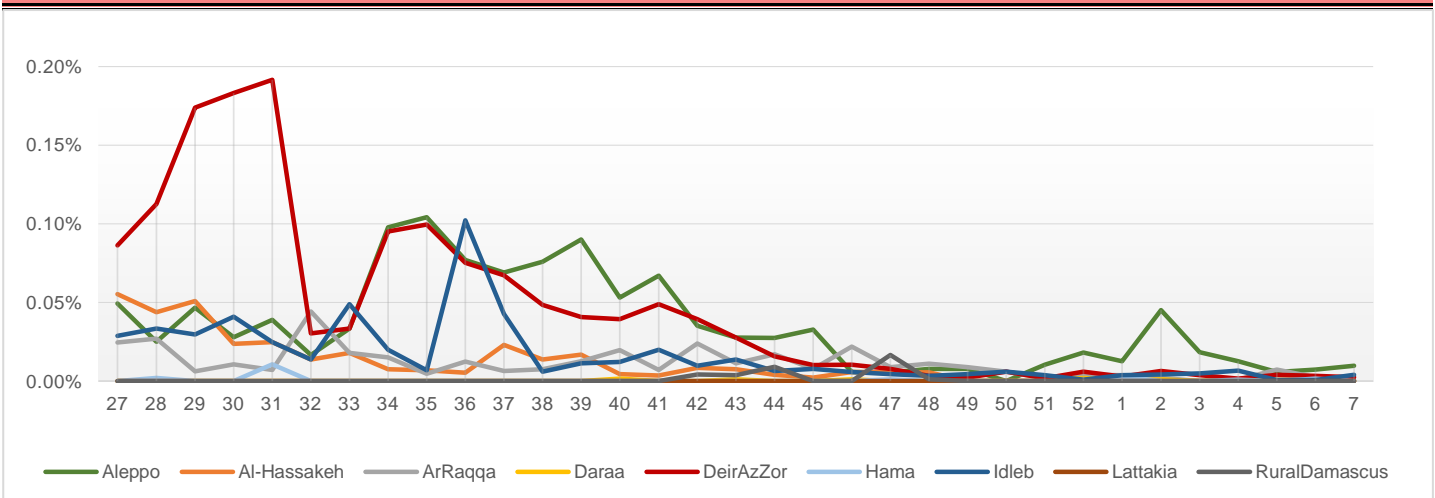
Trends for essential priority diseases in 9 governorates – Epi week 27-2014 to Epi week

7 - 2015

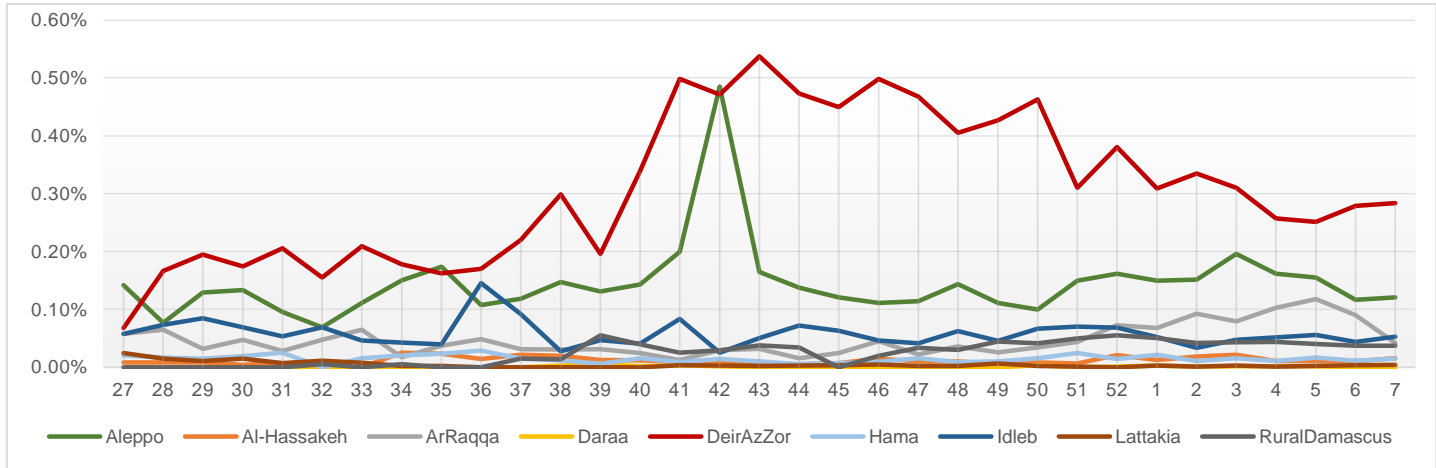


Proportional Morbidity of suspected Measles by Governorate, Epi Week

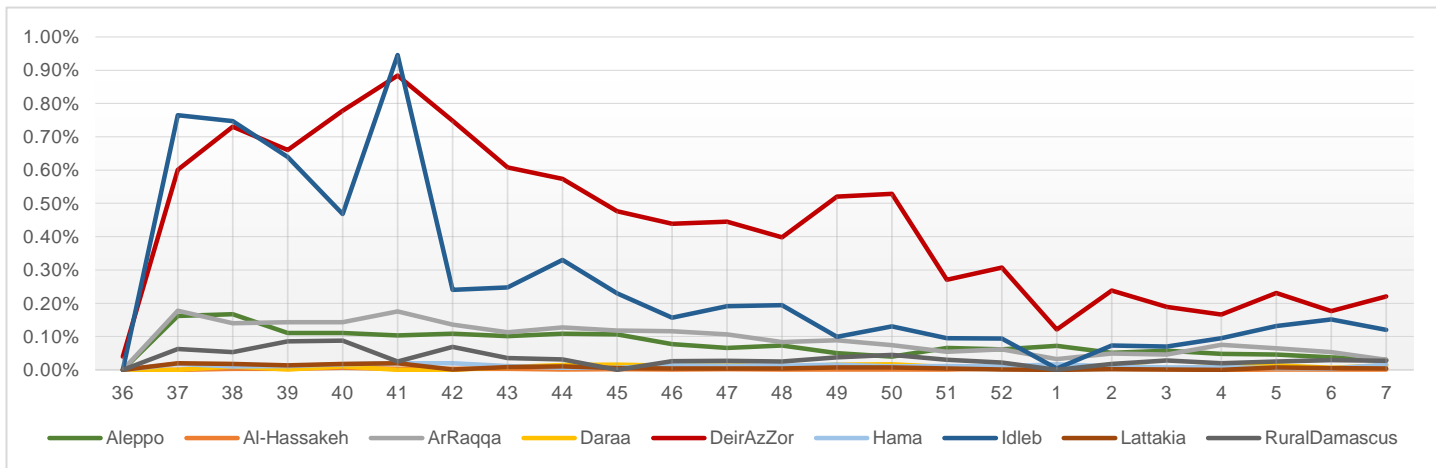
7 - 2015



Proportional Morbidity of suspected AJS by Governorate, Epi Week 7 - 2015



Proportional Morbidity of suspected STF by Governorate, Epi Week 7 - 2015



Number of cases that EWARN observes by age & geographical area for Epi week 7 - 2015

Governorate		ABD	AWD	AJS	SARI	AFP	MEA	MEN	UCE	UXD	FUO	LEISH	STF	OTHER	TOTAL
Aleppo	< 5	21	0	66	36	3	7	13	62	1	37	148	14	14801	36037
	> 5	15	0	83	3	0	5	4	203	0	12	467	23	20013	
AlHasakeh	< 5	15	0	13	8	0	0	0	0	0	0	142	0	1220	3560
	> 5	1	0	6	6	0	0	1	0	0	3	239	2	1904	
ArRaqqa	< 5	10	0	22	27	0	0	3	78	0	3	113	2	6539	15715
	> 5	7	0	30	0	0	1	6	0	0	12	268	35	8559	
Daraa	< 5	0	2	0	18	0	0	1	0	0	1	0	1	2060	5244
	> 5	0	0	0	0	0	0	0	26	0	0	0	16	3119	
DeirEzZor	< 5	33	0	249	88	1	2	15	2	0	20	136	51	10762	20175
	> 5	20	0	101	28	0	1	0	2	0	39	187	221	8217	
Hama	< 5	14	0	3	36	1	0	0	0	0	18	72	0	2284	6815
	> 5	7	0	15	11	0	0	0	1	1	6	216	19	4111	
Idleb	< 5	17	0	26	172	1	2	6	12	0	7	154	30	9703	29484
	> 5	8	0	39	30	0	3	5	30	0	2	320	118	18799	
Lattakia	< 5	0	0	2	0	0	0	0	0	0	0	0	3	571	2108
	> 5	0	0	3	0	0	0	0	0	0	0	2	2	1525	
Rural Damascus	< 5	0	0	8	5	0	0	0	2	0	0	0	4	1379	4320
	> 5	0	0	38	2	1	0	0	3	0	1	0	30	2847	
TOTAL	< 5	110	2	389	390	6	11	38	156	1	86	765	105	49319	123458
	> 5	58	0	315	80	1	10	16	265	1	75	1699	466	69094	
Grand total		168	2	704	470	7	21	54	421	2	161	2464	571	118413	

Disease	Alert threshold	#HF reach threshold	# Cases	The most affected Communities-Districts
AFP	1	5	5	Harim 1 - Al Mara 1 - Idleb 1 - AsSuqaylabiyah 1 - Deir ez zor 1
MEA	1	17	21	Harim 4 - Membij 3 - Abu Kamal 2 - Al Baba 3 - Deir ez zor 1 - Tall Abyad 1- Jarablus 1- Idleb 1 - Jebel Saman 1
AJS	5	43	704	Al Mayadin 15 - Abu Kamal 6 -Rural Damascus 5- Jebel Saman 4 - Membij 4 - Deir ez zor 3 - Al Baba 2 - Ar Raqqa 1 - Tall Abyad 1- Al Hasakeh 1- Idleb 1
STF	5	37	571	AlMayadin 12 - Harim 6 - Ar Raqqa 2 - Deir ez zor 5 - Rural Damascus 4 - Abu Kamal 3 - AsSuqaylabiyah 1 - Daraa 2 - Idleb 1- Jebel Saman 1
ABD	5	4	168	AlMayadin 1 - Abu Kamal 1 - Jebel Saman 1 - Quamishli 1
SARI	5	28	470	Abu Kamal 6 - Ariha 4 - Al Mayadin 3 - Ar Raqqa 2 - Jisr AshShugur 2 - MaarratAnNuman 2 - Al Bab 2- Harim 2 - Daraa 1 - Al Mara 1 - Idleb 1 - AsSuqaylabiyah 1 - AsSalamiyeh 1
MEN	5	2	54	Jebel Saman 1 - Harim 1
(LEISH) UCE	50	14	2464	Jebel Saman 4 - Al Hasakeh 3 - Ar Raqqa 2 - Tall Abyad 2 - Al Mara 1 - -Deir ez zor 1 - AsSuqaylabiyah 1
(Lice and Scabies)	1 cluster			Aleppo rural- west and north rural of Hama - Daraa - Ar Raqqa city - east and north rural of Idleb

Response Activities

- 1-EWARN referral Laboratory was launched in Al Atarib town, in order to confirm diagnosis of measles and AJS outbreaks. [For more details please see the extension.](#)
- 2- Distribution of EWARN materials and posters in health facilities in both Daraa and Rural Damascus.
- 3- Participation in the third meeting of WBD Task Force, which included:
 - Dair ez zor WBD data updates + mapping by sub district, chlorinated stations review.
 - Reparation needed for many water stations with focus on Al Mayadin station as it serves population of 200,000.
 - The effect of Primitive oil refining and any evidence based hazard currently
- 4- Weekly sharing for Leishmaniasis data with MENTOR Initiative for proper response

ABD=Acute Bloody Diarrhea

AWD=Acute Watery Diarrhea

AFP=Acute Flaccid Paralysis

AJS=Acute Jaundice Syndrome

SARI= Severe Acute Respiratory Illness

UXD=Unexplained Death

FUO=Fever Of Unknown Origin

MEA=suspected Measles

MEN= suspected Meningitis

UCE=Unexplained Cluster Of Health Events