

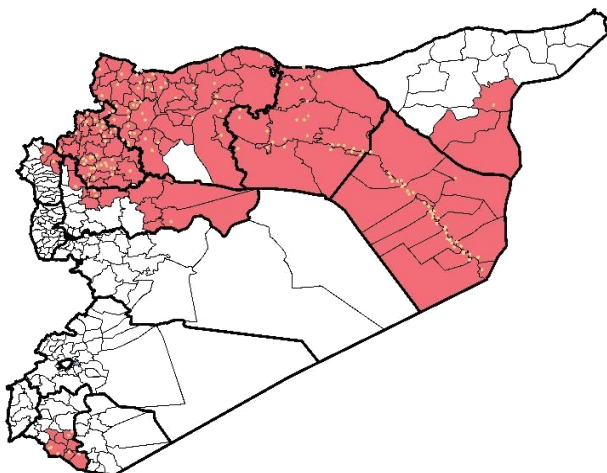
Highlights

- EWARN referral Laboratory was launched in Al Atarib town, in order to confirm diagnosis of measles and AJS outbreaks.
- 181 (field level officers) FLOs have been added to cover about 400 sentinel sites.
- During Epi-week no 8 2015; 94.5% (400/378) of the health facilities across 9 Governorates provided surveillance data, 92.7% of reporting sites submitted the weekly reports on time .
- The total number of consultations reported during the reporting week was 125651 (including 40% children under the age of five) compared to 123392 consultations during week 7, 2015.
- The leading cause of morbidity was AJS (Acute Jaundice Syndrome), with over 667 cases, the highest alerts were reported in Al Mayadin (11).
- In Epi week 8, 4 AFP (Acute Flaccid Paralysis) cases were investigated in these districts: Al Mara (1) – Azaz (1) - Menbij (1) and in Deir ez zor(1). Investigation and sampling for 33 AFP cases were conducted since the beginning of 2015 up to date. See weekly Poliomyelitis outbreak report for more details.

- 19 measles cases reported in this week, the highest alerts were reported in Daraa (3) and Abu Kamal (3 alerts). Most of the cases enrolled in a line list.
- 455 cases of SARI reported in Epi Week 8, the highest alerts were reported in Idleb governorate (11 alerts), clear increase in reported cases within the last 6 weeks
- Common disease reported under others were URTI (upper respiratory tract infection), acute bronchiolitis, chicken pox, acute diarrhea, Brucellosis, Scabies, Lice and Cutaneous leishmaniasis.
- 2035 new leishmaniasis cases reported this week, the alerts reported in 7 districts : - Ar Raqqa 2 - Jebel Saman 1- Al Hasakeh 1 - Tall Abyad 2 - AsSuqaylabiyah 1- and Al Mara 1.
- Participation in technical training for 8th round polio campaign.
- investigation of Gastroenteritis outbreak in Kafr Nabutha, Hama rural .
[For more details please see the extension.](#)

EWARN Coverage

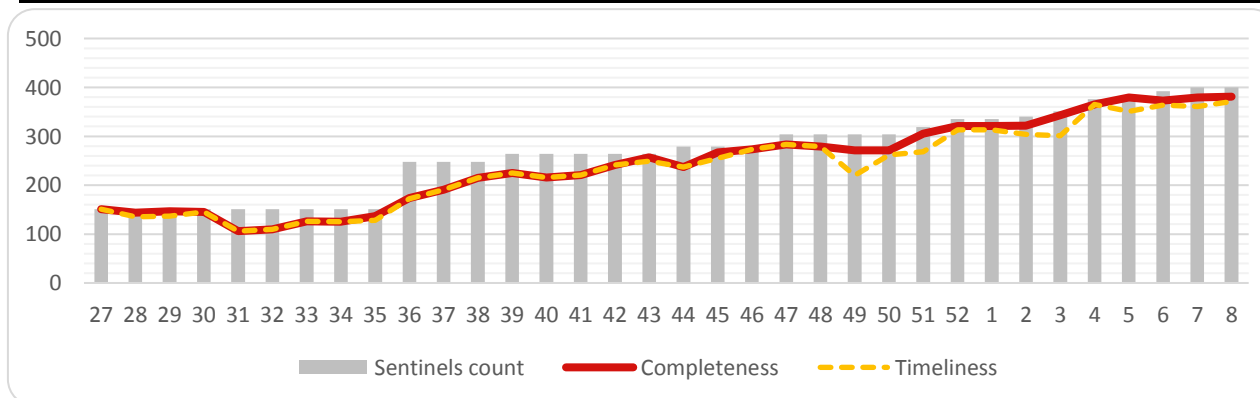
ACU covers 110 sub districts in 9 governorates



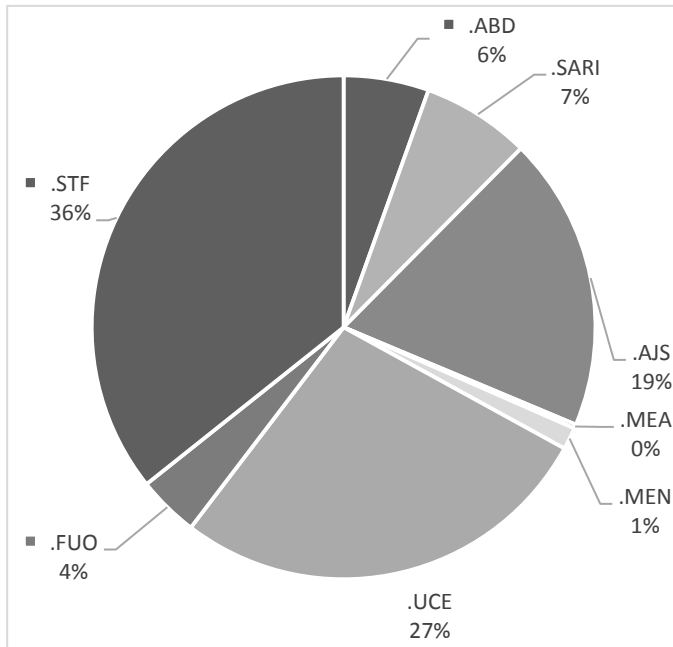
Number of sentinel sites and Total Number of Consultations

Governorate	# of sentinels	Reporting Sentinels	# of consultations
Aleppo	115	107	93.0%
Al-Hassakeh	35	35	100.0%
ArRaqqa	76	75	98.7%
Daraa	8	8	100.0%
DeirAzZor	61	55	90.2%
Hama	14	13	92.9%
Idleb	77	72	93.5%
Lattakia	6	5	83.3%
R.Damascus	8	8	100.0%
Grand total	400	378	94.5%

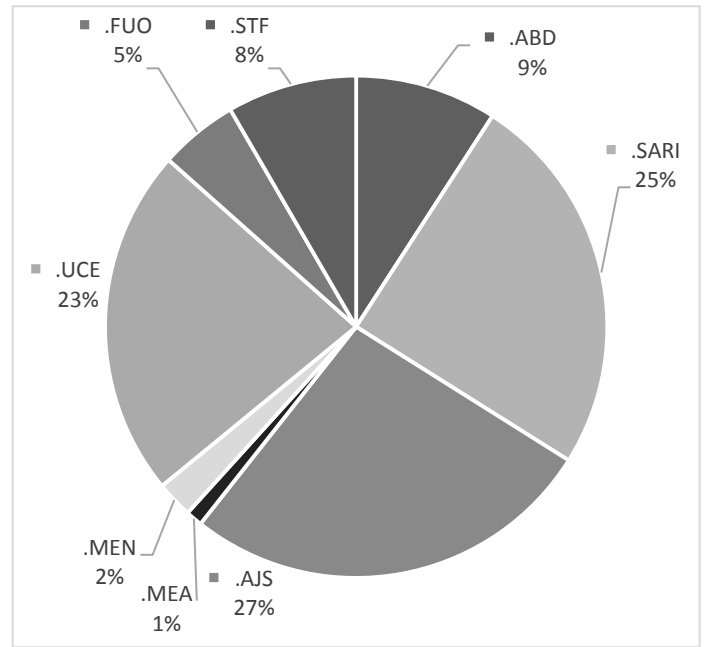
Completeness and Timeliness



Percentage of EWARN Syndromes < 5Y

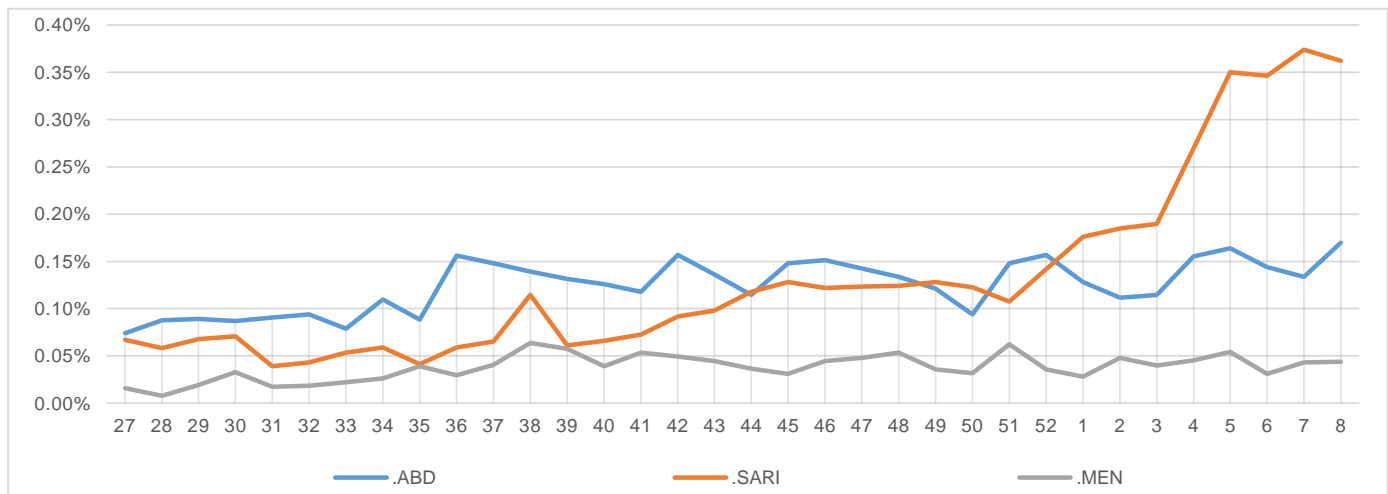


Percentage of EWARN Syndromes > 5Y



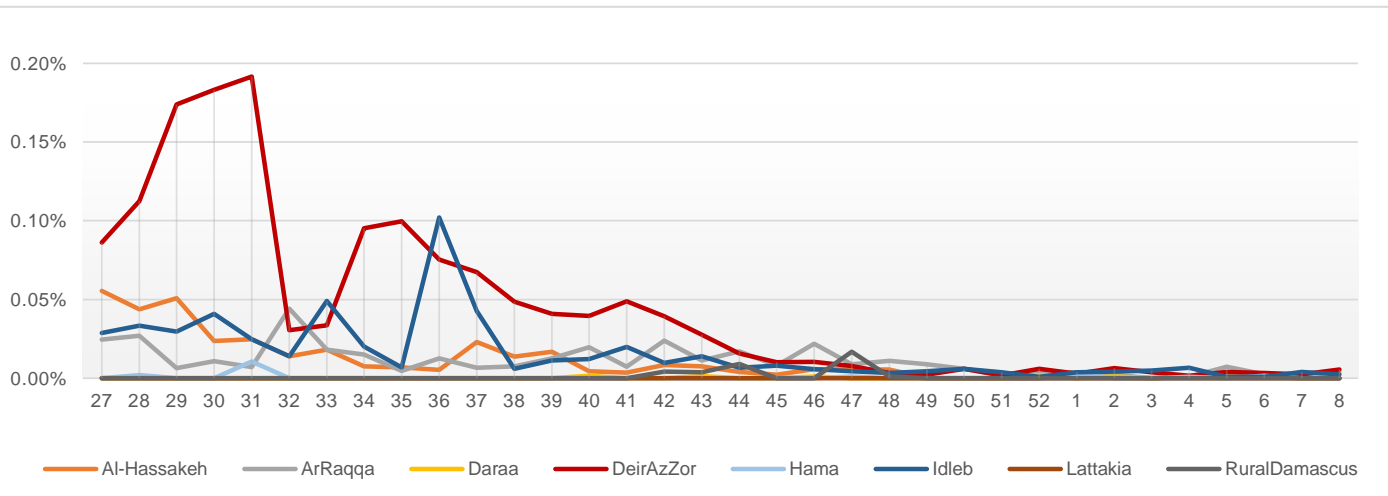
Trends for essential priority diseases in 9 governorates – Epi week 27-2014 to Epi week

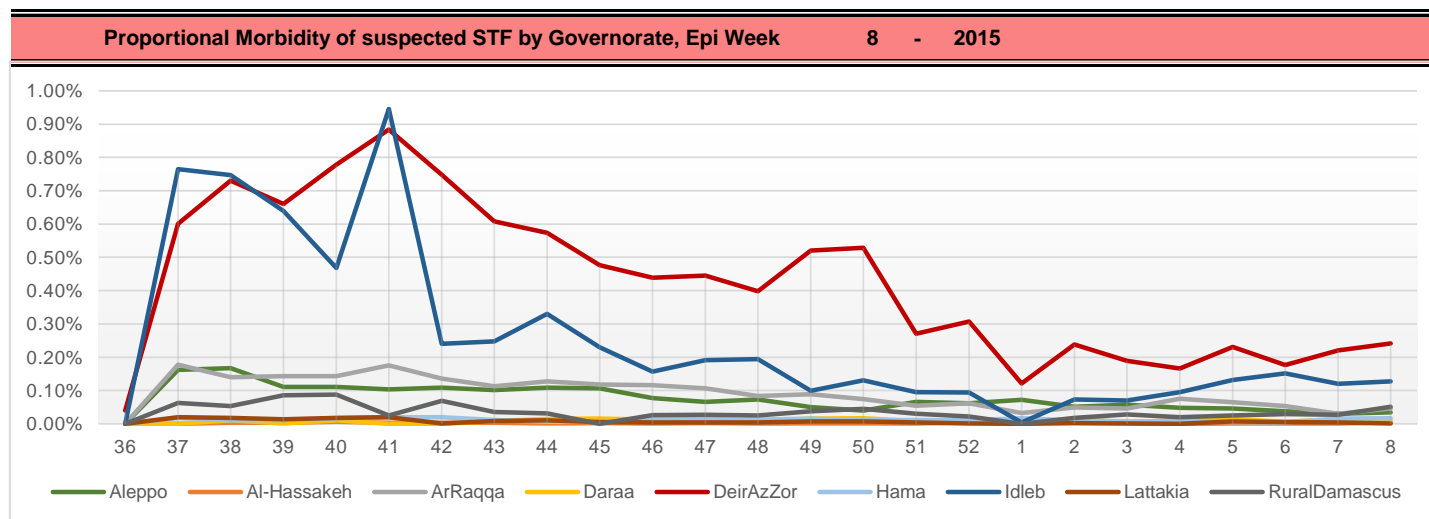
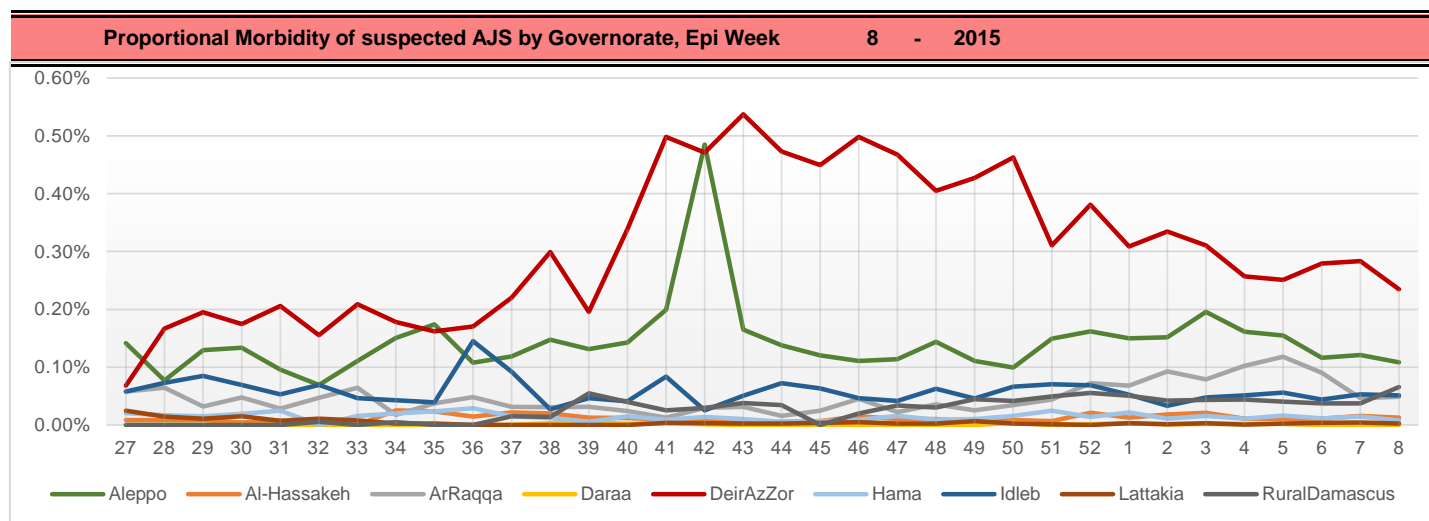
8 - 2015



Proportional Morbidity of suspected Measles by Governorate, Epi Week

8 - 2015





Number of cases that EWARN observes by age & geographical area for Epi week 8 - 2015

Governorate		ABD	AWD	AJS	SARI	AFP	MEA	MEN	UCE	UXD	FUO	LEISH	STF	OTHER	TOTAL
Aleppo	< 5	37	1	72	27	1	3	15	39	1	46	117	16	14206	34159
	> 5	15	0	64	8	0	1	4	75	0	18	409	28	18956	
AlHasakeh	< 5	12	0	13	13	0	0	0	0	0	0	97	0	1354	3557
	> 5	1	0	3	7	0	0	2	0	0	1	153	6	1895	
ArRaqqqa	< 5	15	0	24	34	0	0	1	98	0	2	95	3	6789	16588
	> 5	18	0	37	4	0	0	15	0	0	17	290	55	9091	
Daraa	< 5	0	1	0	7	0	5	0	5	0	0	0	1	2259	5393
	> 5	0	1	0	0	0	0	0	36	0	0	0	12	3066	
DeirEzZor	< 5	37	0	225	83	1	6	13	2	0	6	76	65	10529	18981
	> 5	14	0	70	34	0	1	0	4	0	22	111	238	7444	
Hama	< 5	8	0	1	35	0	0	2	160	2	10	68	2	2201	7180
	> 5	18	0	9	9	0	0	0	240	3	0	188	19	4205	
Idleb	< 5	19	0	30	148	0	1	2	11	0	6	156	24	11834	33106
	> 5	18	0	34	46	0	2	1	61	0	3	293	136	20281	
Lattakia	< 5	0	0	1	0	0	0	0	0	0	0	0	1	431	1755
	> 5	0	0	2	0	0	0	0	0	0	0	0	1	1319	
Rural Damascus	< 5	0	0	8	0	0	0	0	0	0	1	0	5	1366	4922
	> 5	1	0	74	0	0	0	0	9	0	0	0	59	3399	
TOTAL	< 5	128	2	374	347	2	15	33	315	3	71	609	117	50969	125641
	> 5	85	1	293	108	0	4	22	425	3	61	1444	554	69656	
Grand total		213	3	667	455	2	19	55	740	6	132	2053	671	120625	

Disease	Alert threshold	#HF reach threshold	# Cases	The most affected Communities-Districts
AFP	1	4	4	Al Mara 1 - Azaz 1 - Menbij 1 - Deir ez zor 1
MEA	1	15	19	Daraa 3 - Abu Kamal 3 - Deir ez zor 2 - Menbij 2 - Idleb 2 - Al Baba 1 - Al Mayadin 1 - Jisr AshShugur 1
AJS	5	45	667	Al Mayadin 11 - Abu Kamal 9 - Rural Damascus 5 - Deir ez zor 4 - Azaz 3 - Menbij 3 - Al Bab 2 - Jebel Saman 2 - Harim 2 - Ar Raqqa 2 - MaarratAnNuman 1 - Tall Abyad 1
STF	5	36	671	AlMayadin 12 - Harim 7 - Rural Damascus 4 - Abu Kamal 3 - Ar Raqqa 2 - Deir ez zor 2 - AsSalamiyeh 2 - Daraa 2 - Duma 1 - Jebel Saman 1
ABD	5	7	213	Jebel Saman 2 - MaarratAnNuman 2 - AsSuqaylabiyah 1 - AlMayadin 1 - Abu Kamal 1
SARI	5	24	455	Abu Kamal 5 - Ar Raqqa 3 - Al Mara 3 - Ariha 2 - Jisr AshShugur 2 - MaarratAnNuman 2 - AsSalamiyeh 2 - Al Mayadin 2 - Izraa 1 - Harim 1 - Idleb 1
MEN	5	0	55	
(LEISH) UCE	50	7	2053	Ar Raqqa 2 - Jebel Saman 1 - Al Hasakeh 1 - Tall Abyad 1 - Al Mara 1 - AsSuqaylabiyah 1
(Lice and Scabies)	1 cluster			Aleppo rural- west and north rural of Hama - Daraa - Ar Raqqa city - east and north rural of Idleb

Response Activities

- 1- EWARN referral Laboratory was launched in Al Atarib town, in order to confirm diagnosis of measles and AJS outbreaks.
- 2- investigation of Gastroenteritis in Kafr Nabutha -Hama rural , [for more details please see the extension.](#)
- 3- Participation in technical training for 8th round of polio campaign, which included:
 - Polio Eradication strategies
 - Acute flaccid paralysis surveillance
 - Overview of previous campaigns results
 - Campaign`s planning and implantation strategies
 - Incharged team responsibilities
 - Cold chain
 - Teams structure and tasks
 - Reporting and documentation
 - Neutral observer
- 4- Weekly sharing for data of Leishmaniasis cases and sentinel sites which exceeded the alert threshold with MENTOR Initiative for proper response.

ABD=Acute Bloody Diarrhea

AWD=Acute Watery Diarrhea

AFP=Acute Flaccid Paralysis

AJS=Acute Jaundice Syndrome

SARI= Severe Acute Respiratory Illness

UXD=Unexplained Death

FUO=Fever Of Unknown Origin

MEA=suspected Measles

MEN= suspected Meningitis

UCE=Unexplained Cluster Of Health Events