

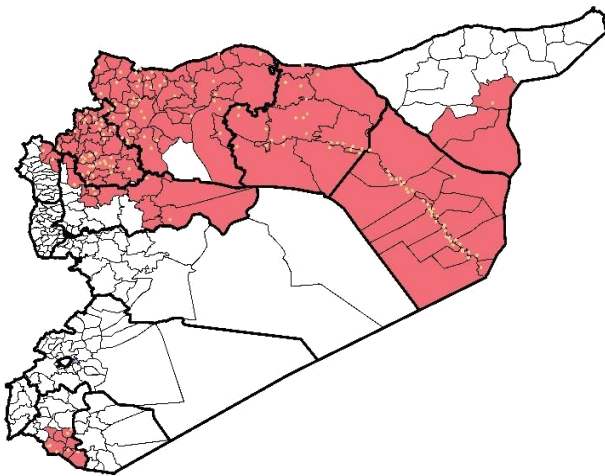
Highlights

- Launch 8th round of polio vaccination campaign in 28th February, after intensive training in between 2 – 17 February. A report with details will be published with next bulletin.
- 181 (field level officers) FLOs have been added to cover about 402 sentinel sites.
- Two health facilities were added to the sentinel sites in this week, both of them in rural damascus.
- During Epi-week no 9 2015; 90.5% (402/364) of the health facilities across 9 Governorates provided surveillance data, 88% of reporting sites submitted the weekly reports on time. The decrease in completeness is due to conflict and internal displacement of the people in Al Hasakeh (Tal Hamis and Hole).
- The total number of consultations reported during the reporting week was 125424 (including 40% children under the age of five) compared to 125651 consultations during week 8, 2015.
- The leading cause of morbidity was STF (Suspected Typhoid Fever), with over 640 cases, the highest alerts were reported in Al Mayadin (9).
- In Epi week 9, 4 AFP (Acute Flaccid Paralysis) cases were investigated in these districts: Harim (1), Jebel Saman (1), Abu Kamal (1) and in Azaz (1). Investigation and sampling for 33 AFP cases were conducted since the beginning of 2015 up to date. See weekly Poliomyelitis outbreak report for more details.

- 9 measles cases reported in this week, the highest alerts were reported in Ar Raqqa (2). Most of the cases enrolled in a line list.
- 499 cases of SARI reported in Epi Week 9, the highest alerts were reported in Idleb governorate (14 alerts), clear increase in reported cases within the last 8 weeks.
- Common disease reported under others were URTI (upper respiratory tract infection), acute bronchiolitis, chicken pox, acute diarrhea, Brucellosis, Scabies, Lice and Cutaneous leishmaniasis.
- 1751 new leishmaniasis cases reported this week, the alerts reported in 5 districts: Ar Raqqa 2 - Jebel Saman 1 - Tall Abyad 1- MaarratAnNuman1- and Harim 1.
- About 200 cases of acute diarrhea were reported in Salqin camps – Idleb rural on 28th February and lasted 4 days. Some suffered from fever and vomiting, most cases treated conservatively, but 15% needed I.V fluid .No death or complications were documented. It thought to be related with poor storage of canned food.

EWARN Coverage

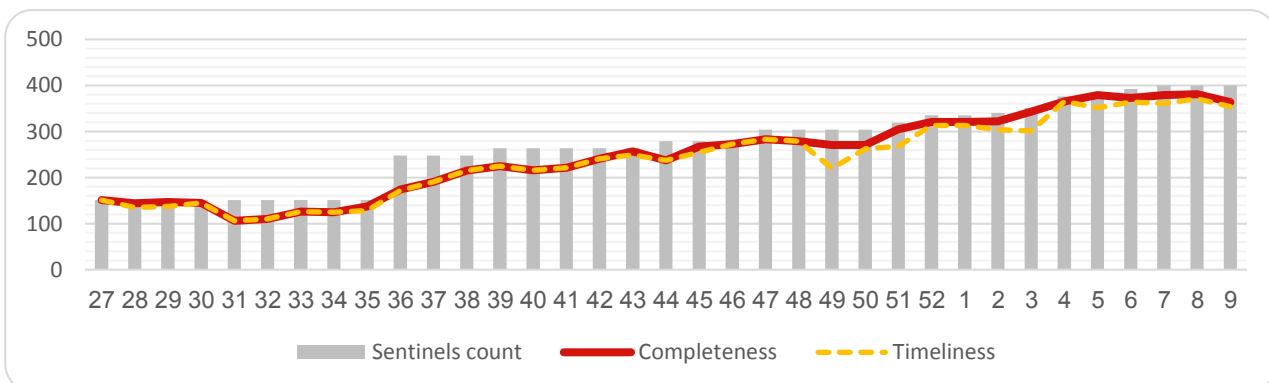
ACU covers 110 sub districts in 9 governorates



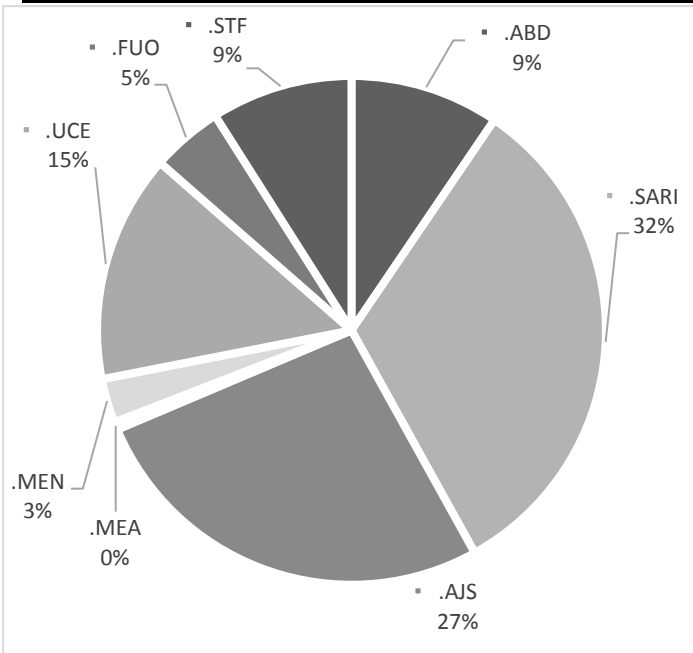
Number of sentinel sites and Total Number of Consultations

Governorate	# of sentinel sites	Reporting Sentinels	# of consultations	
Aleppo	118	108	91.5%	35082
Al-Hassakeh	35	20	57.1%	2118
ArRaqqa	78	75	96.2%	16896
Daraa	8	8	100.0%	5590
DeirAzZor	61	54	88.5%	17990
Hama	15	13	86.7%	7129
Idleb	71	71	100.0%	33764
Lattakia	6	5	83.3%	1511
R.Damascus	10	10	100.0%	5344
Grand total	402	364	90.5%	125424

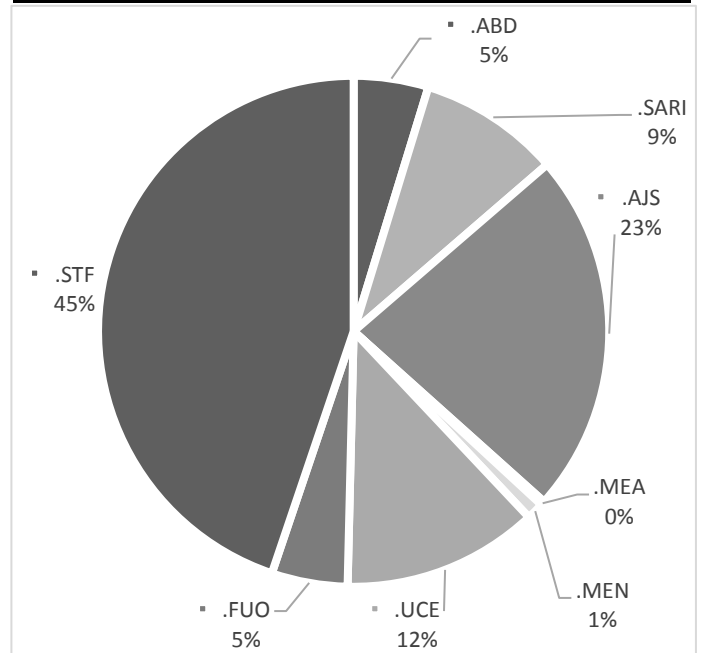
Completeness and Timeliness



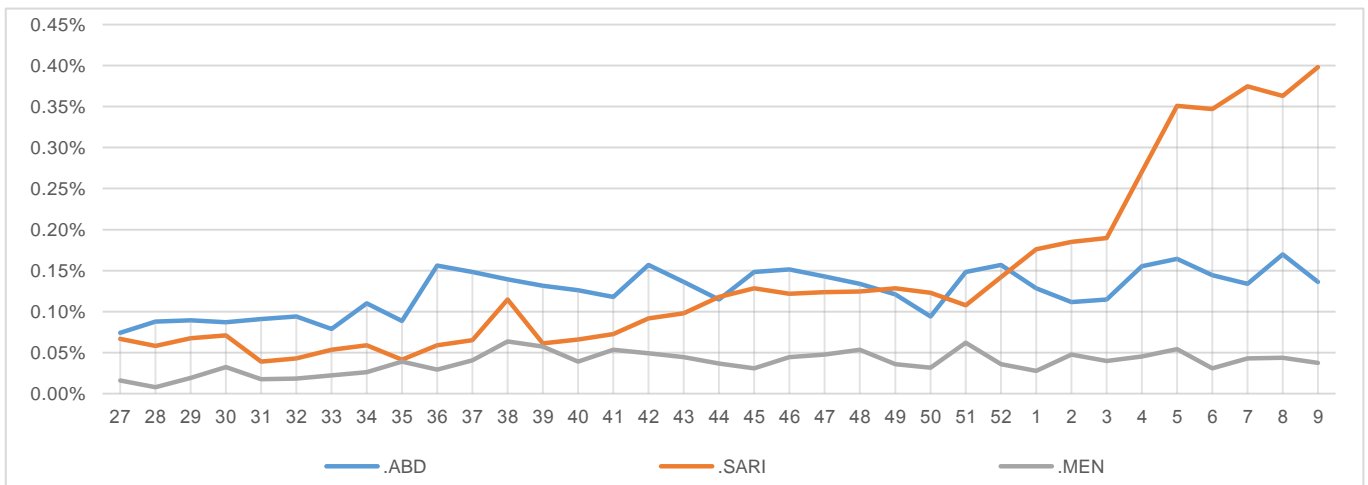
Percentage of EWARN Syndromes < 5Y



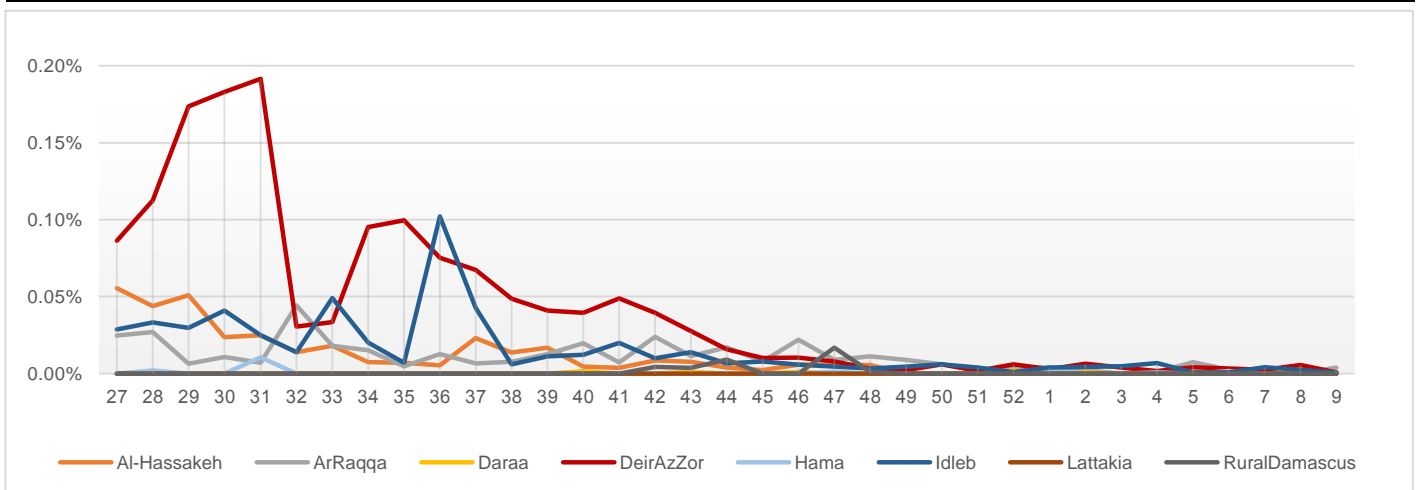
Percentage of EWARN Syndromes > 5Y



Trends for essential priority diseases in 9 governorates – Epi week 27-2014 to Epi week 9 - 2015

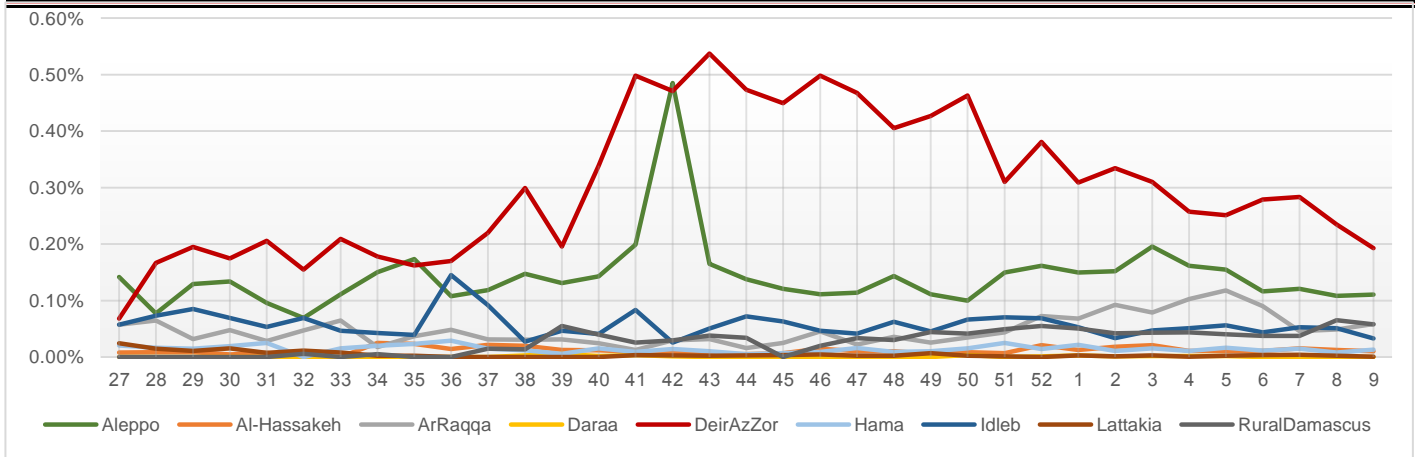


Proportional Morbidity of suspected Measles by Governorate, Epi Week 9 - 2015



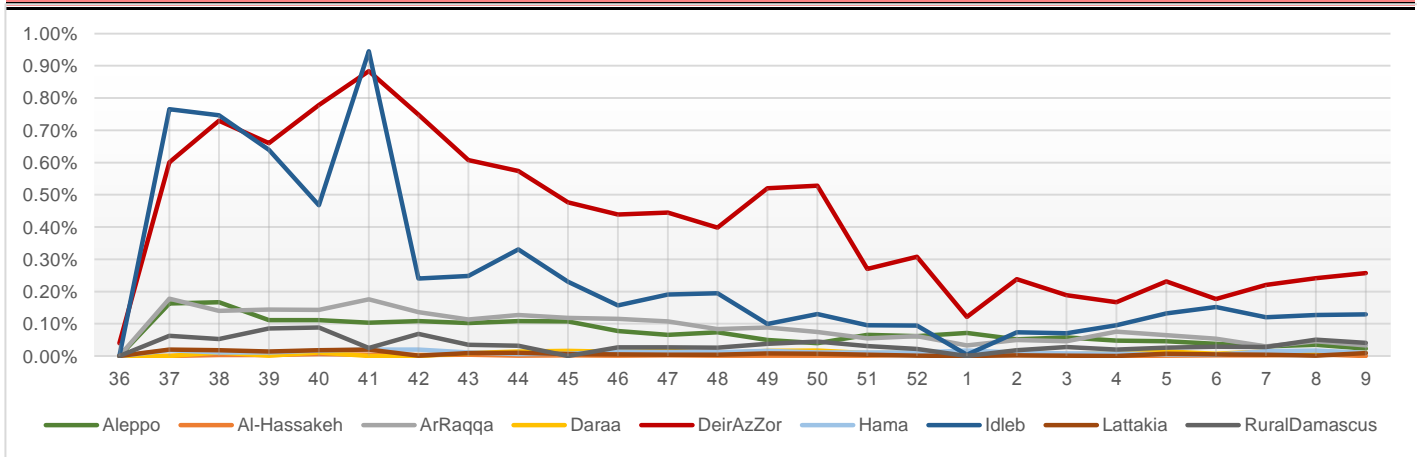
Proportional Morbidity of suspected AJS by Governorate, Epi Week

9 - 2015



Proportional Morbidity of suspected STF by Governorate, Epi Week

9 - 2015



Number of cases that EWARN observes by age & geographical area for Epi week

9 - 2015

Governorate		ABD	AWD	AJS	SARI	AFP	MEA	MEN	UCE	UXD	FUO	LEISH	STF	OTHER	TOTAL
Aleppo	< 5	26	0	68	52	0	1	14	33	0	24	123	13	14910	35267
	> 5	13	0	70	12	0	0	3	50	0	13	366	16	19460	
AlHasakeh	< 5	2	0	5	2	0	0	0	0	0	0	31	0	804	2118
	> 5	2	0	8	0	0	0	0	0	0	0	68	0	1196	
ArRaqqa	< 5	11	0	31	24	0	2	3	113	0	1	89	3	6808	16669
	> 5	13	1	42	2	0	3	6	0	0	14	275	38	9190	
Daraa	< 5	0	3	0	5	0	1	0	8	0	0	0	0	2599	5590
	> 5	0	2	0	0	0	0	0	21	0	0	0	13	2938	
DeirEzZor	< 5	46	0	189	84	1	1	9	2	0	8	68	73	9907	17979
	> 5	18	0	52	21	0	0	2	2	0	20	113	249	7114	
Hama	< 5	10	0	2	26	0	0	1	0	0	17	35	0	2804	7129
	> 5	4	0	14	4	0	0	0	0	0	4	142	12	4054	
Idleb	< 5	20	0	14	198	0	1	6	17	0	5	146	17	12622	33480
	> 5	6	0	27	66	0	0	2	66	0	6	294	144	19823	
Lattakia	< 5	0	0	0	0	0	0	0	0	0	0	0	1	372	1514
	> 5	0	0	1	0	0	0	0	0	0	0	0	10	1130	
Rural Damascus	< 5	0	0	14	2	0	0	1	3	0	0	0	2	1504	5344
	> 5	0	1	58	1	0	0	0	8	0	0	1	49	3700	
TOTAL	< 5	115	3	323	393	1	6	34	176	0	55	492	109	52330	125090
	> 5	56	4	272	106	0	3	13	147	0	57	1259	531	68605	
Grand total		171	7	595	499	1	9	47	323	0	112	1751	640	120935	

Disease	Alert threshold	#HF reach threshold	# Cases	The most affected Communities-Districts
AFP	1	4	4	Harim 1 - Jebel saman 1 - Abu Kamal 1 - Azaz 1
MEA	1	7	9	Ar Raqqa 2 - Tall Abyad 1 - Daraa 1 - Deir ez zor 1 - Menbij 1 - Idleb 1
AJS	5	35	595	Al Mayadin 8 - Abu Kamal 7 -Rural Damascus 6 - Ar Raqqa 4 - Al Bab 3 - Menbij 2 - Jebel Saman 2 - Deir ez zor 1 - Azaz 1 - Tall Abyad 1
STF	5	25	640	AlMayadin 9 - Harim 5 - Rural Damascus 4 - Deir ez zor 3 - Duma 1 - Jisr AshShugur 1 - Daraa 1 - Lattakia 1
ABD	5	4	171	AlMayadin 2 - Abu Kamal 1 - Deir ez zor 1
SARI	5	27	499	MaarratAnNuman 7 - Abu Kamal 5 - Al Mayadin 3 - Al Bab 3 - Ariha 3 - Jisr AshShugur 2 - Izraa 1 - Harim 1 - Idleb 1- Jebel Saman 1
MEN	5	0	47	
(LEISH) UCE	50	6	1751	Ar Raqqa 2 - Jebel Saman 1 - Tall Abyad 1 - Harim 1 - MaarratAnNuman 1
(Lice and Scabies)	1 cluster			Aleppo west rural- west and north rural of Hama - Daraa - Ar Raqqa city - east and north rural of Idleb

Response Activities

- 1- Launch 8th round of polio vaccination campaign in 28th February, after intensive training in between 2 – 17 February. A report in details will be published with next bulletin.
- 2- Weekly sharing for data of Leishmaniasis cases and sentinel sites which exceeded the alert threshold with MENTOR Initiative for proper response.
- 3- Distribution for education materials of EWARNS and AFP surveillance in western area of Daraa and Quneitra.
- 4- Participation in 4th meeting of WBD in Deir ez zor task force, which included:
 - Identify critical geographic locations in terms of water borne diseases prevalence and numbers of population
 - 5 sub-districts were selected as priorities: Al Mayadin – Ashara –Deir ez zor – Khasham - Hajin .These locations are inhabited by an estimated number of **997919** people and are served by 33 water treatment plants.
 - An initial assessment will be carried out the engineers to define an outline of needs per plant. On the health side the case management training will prioritize the training of health staff in the selected districts.

ABD=Acute Bloody Diarrhea

AWD=Acute Watery Diarrhea

AFP=Acute Flaccid Paralysis

AJS=Acute Jaundice Syndrome

SARI= Severe Acute Respiratory Illness

UXD=Unexplained Death

FUO=Fever Of Unknown Origin

MEA=suspected Measles

MEN= suspected Meningitis

UCE=Unexplained Cluster Of Health Events