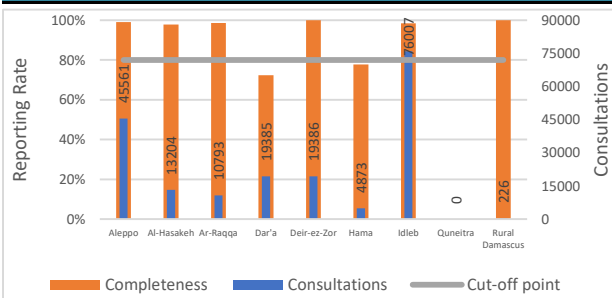


### Highlights

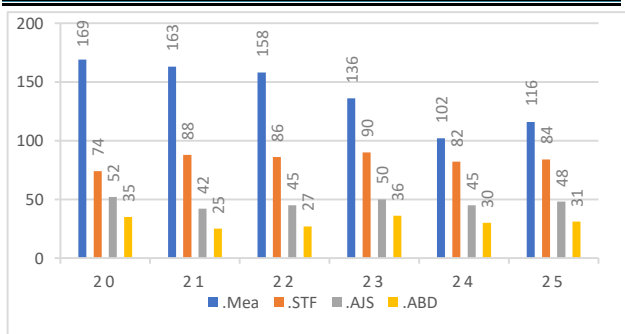
- A training session for the health workers of Relief International organization who are working in Idleb and Hama governorates, on 24<sup>th</sup> and 25<sup>th</sup> of June, the topics were: diseases case definition, AFP, Measles and Rubella surveillance. The total number of the trainees was 91 health workers.
- During Epi Week 25, (470/497) 95% of the health facilities across 10 Governorates provided surveillance data for all EWARN Syndroms this week 89% of reporting sites submitted the weekly reports on time.
- The consultations reported this week were 189435 (including 40% children under the age of five) compared to 175811 consultations in previous week.
- 5 AFP (Acute Flaccid Paralysis) cases were reported Aleppo - Idleb - Ar-raqqa - Deir-ez-zor - Al-Hasakeh
- EWARN lab reported: 11 positive cases for Measles IgM (Menbij 4, Jarablus 5, Qamishli 2), 5 positive cases for IgM hepatitis A (Harim 2, Idleb 3), 9 positive cases for Mumps IgM ( Al Bab 7, Menbij 2), and 5 positive cases for Salmonella IgM (Jebel Saman).
- The number of AJS cases was 751, with highest number of alerts Deir ez zor district (12 alerts).
- The number of OAD cases have not doubled
- The highest syndromes reported were respectively: OAD (19725), ILI (13751), and STF (1308).
- Al-Hasakeh governorate recorded the highest proportional morbidity for OAD (31.4%), ILI (28.3%), and AJS (1.2%).
- Deir ez Zor governorate recorded the highest proportional morbidity for STF (2.6%), and Leish (1.6%).

### Reporting Rate and Consultations

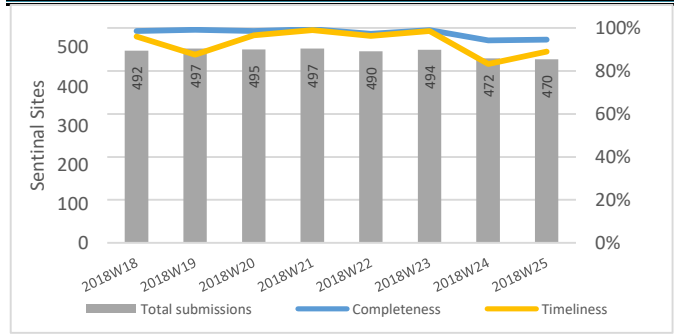


Governorate	Reporting Sites	No. Sentinal Sites	Completeness
Aleppo	102	103	99%
Al-Hasakeh	90	92	98%
Ar-Raqqa	70	71	99%
Dar'a	21	29	72%
Deir-ez-Zor	52	52	100%
Hama	7	9	78%
Idleb	127	129	98%
Quneitra	0	11	0%
Rural Damascus	1	1	100%
<b>Total</b>	<b>470</b>	<b>497</b>	<b>95%</b>

### Numbers of Top 4 Alerts

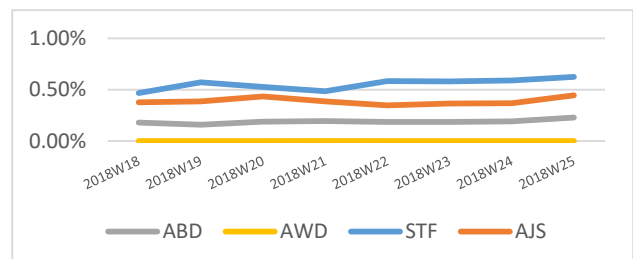
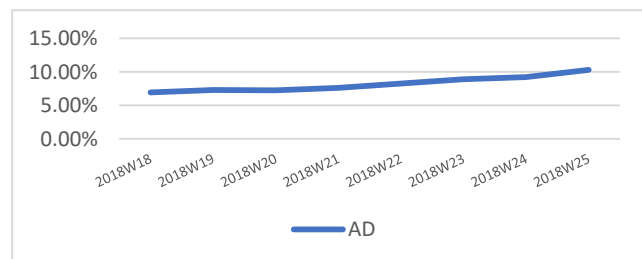


### Reporting Rate and Timeliness



### Water Borne Diseases details

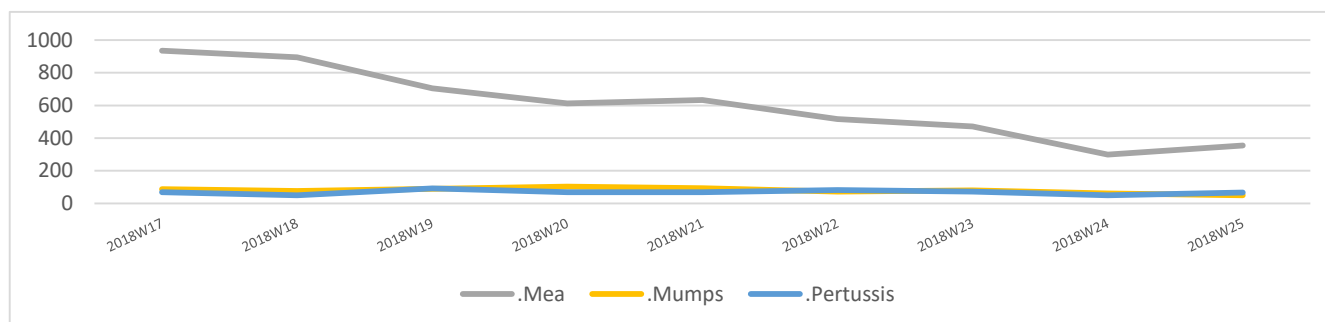
- The number of the reported STF cases was 1308, as well as 751 new cases of AJS were reported.
- EWARN reported 19725 OAD cases, The number of OAD cases have not doubled
- Water borne diseases risk scale is being generated and followed on community level and on monthly basis in all EWARN coverage areas.
- EWARN informed partners & WASH team about the districts with high WBD levels.



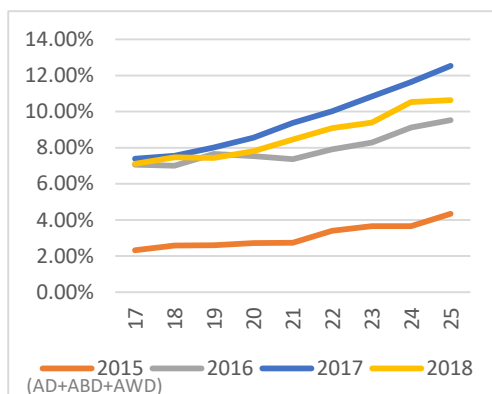
## Vaccine Preventable Diseases details

In Epi-week 25 /2018, 355 cases of suspected measles were reported.

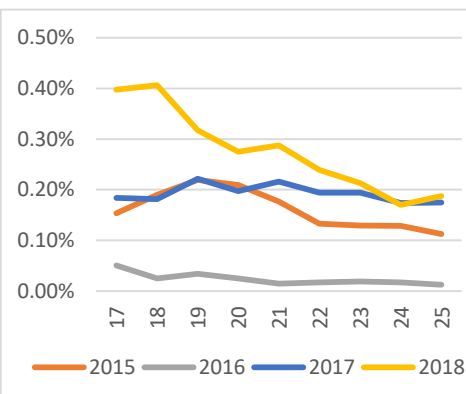
- 17 suspected measles cases were investigated in Epi week 25 : Aleppo rural 3, Ar Raqqa 7, ,Al Hasakeh 2,Hama 4 and Dar'a 1.
- EWARN labs reported 11 positive cases for Measles IgM out of 12 specimens: Menbij 4, Jarablus 5, Qamishli 2.
- In the Epi week 25/2018, 74 new cases of suspected measles were reported from Ar Raqqa governorate (Ar Raqqa district 64 ,Tell Abiad 4, Ath-Thawrah 6), in addition to 117 suspected cases from Deir ez zor governorate (Deir ez zor district 67 ,Mayadin 38, Abu Kamal 12). While the reporting has increased from Aleppo into 72 new cases were from (Al Bab9, A'zaz 20, Jebel Saman 33, Menbij 7).
- The reporting of new measles cases from different areas of Deir-ez- Zor ,Ar Raqqa , rural Aleppo and Idleb is still ongoing.
- It was recommended to: isolate the cases, personal hygiene, providing vitamin A and explain to parents about the importance of the vaccine.
- The number of the reported suspected Pertussis cases was 67, the highest number reported from Al Mayadin district (18 cases).
- The number of the reported suspected Mumps cases was 50, the highest number reported from A'zaz district (6 cases).



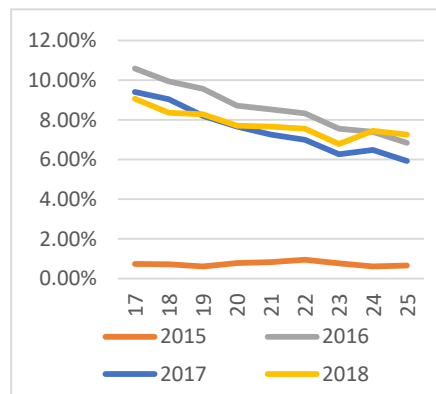
### Prop. Morb. of Diarrheal Diseases



### Prop. Morb. of Measles



### Prop. Morb. of ILI



## Case Numbers By Governorate and Age

Gov. & Age	OAD	ABD	AWD	STF	AJS	ILI	SARI	AFP	Mea	Men	UCE	UCD	Leish	Others	Total	
Aleppo	<5	2656	16	0	8	28	1551	14	1	39	4	0	0	49	12796	17162
	≥5	1951	18	0	150	53	1702	0	0	33	1	2	0	148	24341	28399
Idleb	<5	2756	8	0	46	69	1732	40	1	59	13	0	1	150	21882	26757
	≥5	2296	13	0	331	99	1685	15	0	28	6	0	7	343	44427	49250
Hama	<5	212	0	0	2	0	199	0	0	1	0	0	0	8	1323	1745
	≥5	225	0	0	6	0	269	0	0	2	0	0	0	21	2605	3128
Ar-raqqqa	<5	998	27	0	25	54	337	17	1	44	5	1	0	52	3798	5359
	≥5	652	22	0	73	43	277	14	0	30	5	1	0	56	4261	5434
Deir-ez-Zor	<5	1309	146	0	103	142	644	44	1	78	24	0	0	136	6324	8951
	≥5	1254	79	0	402	69	769	20	0	39	2	0	0	173	7628	10435
Al-Hasakeh	<5	2489	56	0	43	86	2084	44	1	0	20	0	0	38	2774	7635
	≥5	1660	27	0	44	75	1651	32	0	0	10	0	0	41	2029	5569
R. Damascus	<5	7	2	0	0	0	1	0	0	0	0	0	0	0	27	37
	≥5	31	1	0	0	0	2	0	0	0	0	0	0	2	153	189
Dar'a	<5	705	1	0	2	11	358	9	0	1	5	1	0	0	6720	7813
	≥5	524	3	0	73	22	490	8	0	1	2	1	1	6	10441	11572
<b>Total</b>		<b>19725</b>	<b>419</b>	<b>0</b>	<b>1308</b>	<b>751</b>	<b>13751</b>	<b>257</b>	<b>5</b>	<b>355</b>	<b>97</b>	<b>6</b>	<b>9</b>	<b>1223</b>	<b>151529</b>	<b>189435</b>

## Alerts' Numbers by District

Governorate	District	Sub-district	ABD	AJS	Leish	Mea	OAD	SARI	STF
Al-Hasakeh	Al Malika	Jawadiyah	1						
Al-Hasakeh	Al Malika	Ya'robiyah		1					
Aleppo	A'zaz	Aghtrin					1		
Aleppo	A'zaz	Suran				1	1		
Aleppo	Jarablus	Ghandorah							1
Aleppo	Jarablus	Jarablus				1	1		
Aleppo	Jebel Saman	Atareb			1				
Aleppo	Jebel Saman	Daret Azza	1						
Aleppo	Jebel Saman	Haritan					1		1
Ar-Raqqa	Al-Thwarah	Jurneyyeh	1				1		
Ar-Raqqa	Ar-Raqqa	Ar-Raqqa			1				
Ar-Raqqa	Tell Abiad	Ein Issa							1
Dar'a	Dar'a	Dar'a		1					
Dar'a	Dar'a	Jizeh				1			
Deir-ez-Zor	Abu Kamal	Susat	1	1					
Deir-ez-Zor	Deir-ez-Zor	Deir-ez-Zor			1				
Deir-ez-Zor	Deir-ez-Zor	Kisreh			1				
Deir-ez-Zor	Deir-ez-Zor	Sur			1				
Hama	As Suqaylabiyah	Madiq Castle							1
Hama	As Suqaylabiyah	Ziyara				1			
Idleb	Al Ma'ra	Ma'arrat An Nu'man			1			1	
Idleb	Ariha	Ehsem				1			
Idleb	Harim	Armanaz		1		1			
Idleb	Harim	Dana			1			1	
Idleb	Harim	Harim		1			1		1
Idleb	Harim	Kafr Takharim		1					
Idleb	Idleb	Saraqab			1				

Ps: The colored cells represent the highest alerts for each surveyed syndrome on district level

## Lab Activities Epi Week 25

Syndrome	Pattern analysis	No. of Sampels	No. of positive samples	Positive sample distribution (District)
Measles	Measles IgM	20	16	8 Al'Bab, 6 Jabal'Saman, 2 Harem,
Rubella	Rubella IgM	4	All suspected samples for Rubella IgM were negative	
Acute Jaundice Syndrome	HAV IgM	4	3	3 Idleb
Mumps	Mumps IgM	14	10	5 Al'Bab , 4 Membij, 1 Dara

## Abbreviations

ABD	Acute Bloody Diarrhea	Mea	suspected Measles
OAD	Other Acute Diarrhea	Men	suspected Meningitis
AFP	Acute Flaccid Paralysis	Prop.Morb.	Proportional Morbidity
AJS	Acute Jaundice Syndrome	SARI	Severe Acute Respiratory Illness
AWD	Acute Watery Diarrhea	UCE	Unexplained Cluster Of Health Events
ILI	Influenza-like Illness	UCD	Unexplained Death
WASH	Water Sanitation Hygine	WBD	Water Borne Diseases
VPD	Vaccine Preventable Diseases	ARI	Acute Respiratory Illness