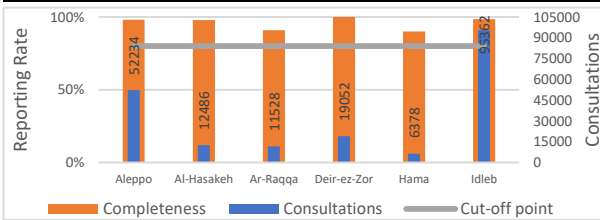


Highlights

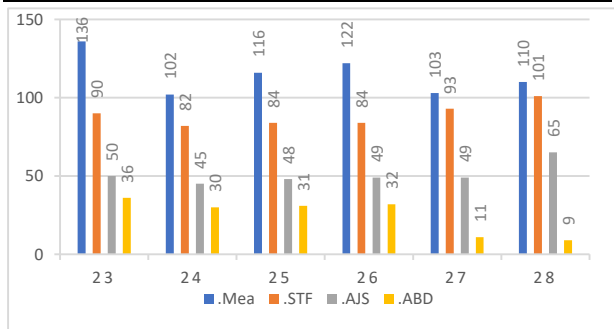
- During Epi Week 28, (451/459) 98% of the health facilities across 6 Governorates provided surveillance data for all EWARN Syndromes this week 86% of reporting sites submitted the weekly reports on time.
- The consultations reported this week were 196307 (including 40% children under the age of five) compared to 197040 consultations in previous week.
- 5 AFP (Acute Flaccid Paralysis) cases were reported 3 Idleb - 1 Aleppo - 1 Deir-ez-Zor
- EWARN recorded 9 deaths cases because of Measles complications from beginning 2018 up to this EPID week distributed as follows 5 in Deir ez Zor, 3 in Idleb and 1 in Aleppo countryside.
- EWARN labs reported: 6 positive cases for Measles IgM (4 Jebel Saman, 1 Hama, and 1 Idleb), 3 positive IgM cases for hepatitis A (Idleb).
- The number of AJS cases was 1087, with the highest number of alerts Idleb district (7 alerts).
- The number of OAD cases doubled in: As-Salamiyeh
- The highest syndromes reported were respectively: OAD (19127) , ILI (13578) and STF (1501).
- Al-Hasakeh governorate recorded the highest proportional morbidity for OAD (33.0%) and ILI (26.7%).
- Deir ez Zor governorate recorded the highest proportional morbidity for STF (2.8%).
- Hama rural recorded the highest proportional morbidity for Leish (1.3 %).
- Rural Damascus (Rukban camp) recorded the highest proportional morbidity for AJS (27.1 %).

Reporting Rate and Consultations

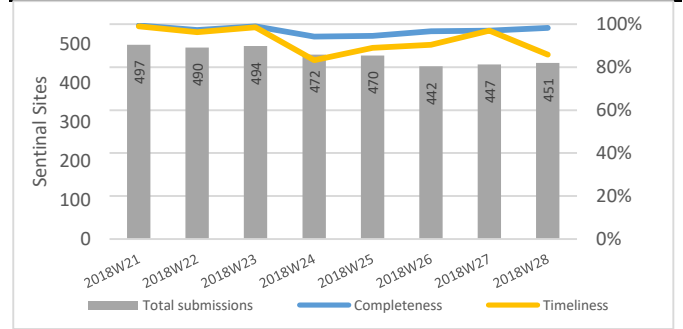


Governorate	Reporting Sites	No. Sentinal Sites	Completeness
Aleppo	102	104	98%
Al-Hasakeh	90	92	98%
Ar-Raqqa	70	77	91%
Deir-ez-Zor	51	51	100%
Hama	9	10	90%
Idleb	125	127	98%
Total	451	459	98%

Numbers of Top 4 Alerts

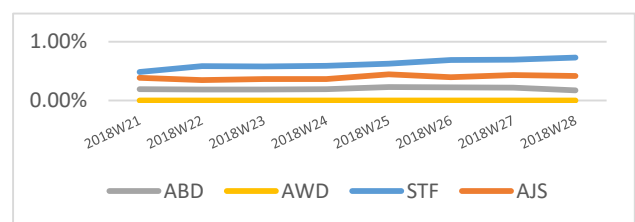
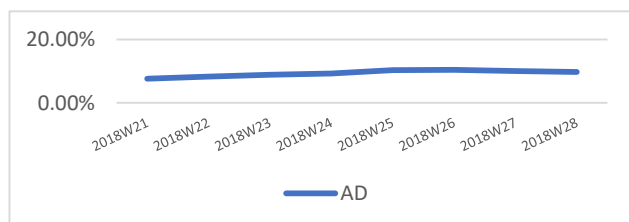


Reporting Rate and Timeliness



Water Borne Diseases details

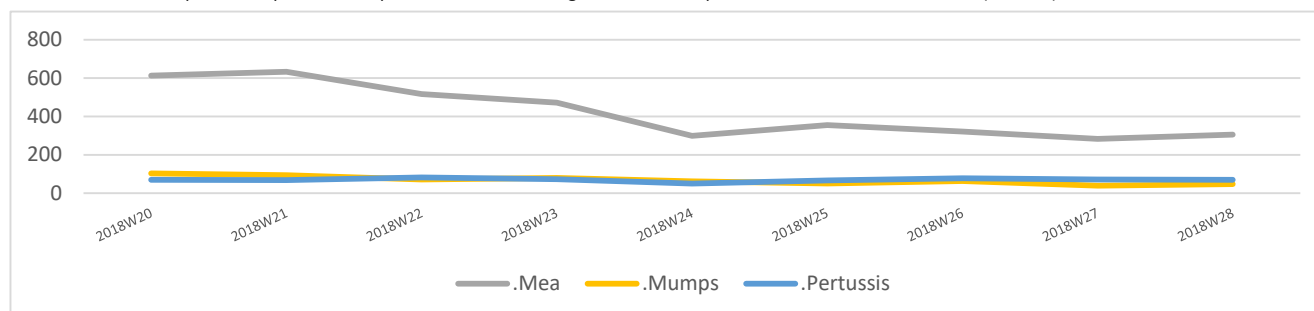
- The number of the reported STF cases was 1501, as well as 1087 new cases of AJS were reported.
 - EWARN reported 19127 OAD cases, the number of OAD cases doubled only in: As-Salamiyeh
 - An alert pf STF was verified in Al-Bab sub-district during Epi week 28, the total number of the reported cases was 94 (48 in Al-Bab city and 46 in Bazagha), 20 specimens were collected and Salmonella IgM was positive in 12.
- The water sources in the area were investigated and showed 75% of them were contaminated (all are private wells).
The Coordination with the local council to monitor the condition of the wells and tankers (disinfection and distribution of safe water) is ongoing.
IEC awareness materials about Typhoid fever and hepatitis A were distributed to health workers in the area.
- Water borne diseases risk scale is being generated and followed on community level and on monthly basis in all EWARN coverage areas.
 - EWARN informed partners & WASH team about the districts with high WBD levels.



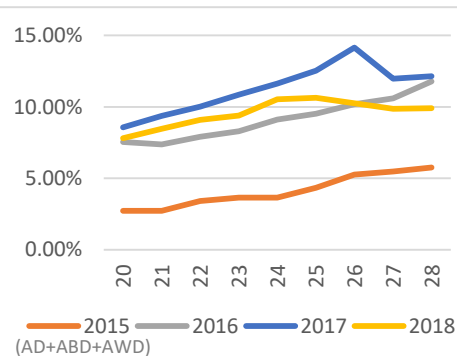
Vaccine Preventable Diseases details

In Epi-week 28 /2018, 306 cases of suspected measles were reported.

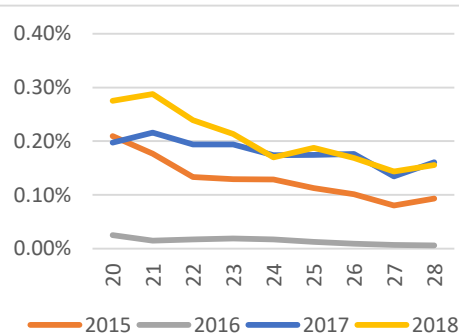
- 11 suspected measles cases were investigated in Epi week 28 : Ar-Raqqa 6, and Al Hasakeh 5.
- EWARN labs reported 6 positive cases for Measles IgM out of 8 specimens: (Jebel Saman 4, Idleb 1 , Hama 1)
- In the Epi week 28/2018, reporting from Ar Raqqa governorate has increased toward 94 new cases of suspected measles and distributed as followed (Ar Raqqa district 80 ,Tell Abiad 6, Ath-Thawrah 8),
- In Deir ez zor governorate the measles outbreak is still ongoing and there are 94 new suspected cases as follows (Deir ez zor district 54 ,Mayadin 34, Abu Kamal 6).
- The reporting of new measles cases from different areas of Deir-ez- Zor ,Ar Raqqa , rural Aleppo and Idleb is still ongoing.
- It was recommended to: isolate the cases, personal hygiene, providing vitamin A and explain to parents about the importance of the vaccine.
- The number of the reported suspected Pertussis cases was 70, the highest number reported from AL Mayadin (15 cases).
- The number of the reported suspected Mumps cases was 47, the highest number reported from Jebel Saman district (6 cases).



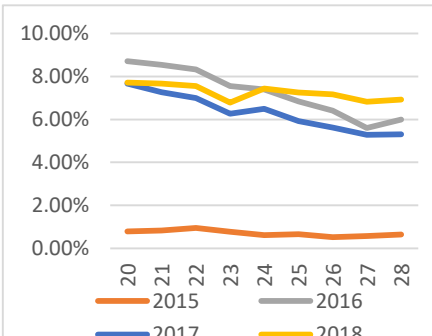
Prop. Morb. of Diarrheal Diseases



Prop. Morb. of Measles



Prop. Morb. of ILI



Case Numbers By Governorate and Age

Gov. & Age	OAD	ABD	AWD	STF	AJS	ILI	SARI	AFP	Mea	Men	UCE	UCD	Leish	Others	Total	
Aleppo	<5	2900	17	0	7	38	1638	18	0	31	4	0	0	47	13881	18581
	≥5	2084	12	0	228	94	1889	0	1	14	2	0	0	159	30626	35109
Idleb	<5	3056	2	0	49	128	2020	60	2	40	22	0	0	131	25811	31321
	≥5	2254	5	0	415	139	1749	24	1	31	7	0	0	301	53618	58544
Hama	<5	352	0	0	2	2	294	0	0	2	0	0	0	30	1908	2590
	≥5	404	0	0	16	2	596	0	0	0	0	0	0	70	3946	5034
Ar-raqqa	<5	935	15	0	27	56	267	18	0	63	2	1	0	50	4860	6294
	≥5	573	26	0	77	54	243	13	0	31	3	1	0	55	5656	6732
Deir-ez-Zor	<5	1232	90	2	106	141	673	47	1	65	31	0	1	93	6362	8844
	≥5	1123	34	0	430	75	838	10	0	29	3	0	0	83	7608	10233
Al-Hasakeh	<5	2404	70	0	76	123	1849	51	0	0	18	0	0	49	2511	7151
	≥5	1760	37	0	68	121	1522	50	0	0	18	0	0	40	1837	5453
R. Damascus	<5	23	1	0	0	71	0	0	0	0	0	0	0	0	43	138
	≥5	27	3	0	0	43	0	0	0	0	0	0	0	0	210	283
Total		19127	312	2	1501	1087	13578	291	5	306	110	2	1	1108	158877	196307

Alerts' Numbers by District

Governorate	District	Sub-district	AJS	Leish	Mea	OAD	SARI	STF
Aleppo	A'zaz	Aghtrin	1					
Aleppo	Ain Al Arab	Ain al Arab			1			
Aleppo	Al Bab	Al Bab						1
Aleppo	Jarablus	Jarablus					1	
Aleppo	Jebel Saman	Atareb	1	1				
Aleppo	Jebel Saman	Zarbah						1
Ar-Raqqa	Ar-Raqqa	Ar-Raqqa		1				
Ar-Raqqa	Tell Abiad	Ein Issa			1			
Deir-ez-Zor	Deir-ez-Zor	Deir-ez-Zor		1				
Deir-ez-Zor	Deir-ez-Zor	Kisreh		1				
Hama	As Salamiyeh	As-Saan			1	1		
Hama	As Suqaylabiyah	Madiq Castle		1				
Hama	Hama	Hamra			1			
Idleb	Al Ma'ra	Khan Shaykun						1
Idleb	Al Ma'ra	Ma'arrat An Nu'man		1				
Idleb	Ariha	Ehsem					1	
Idleb	Harim	Kafr Takharim	1					
Idleb	Harim	Salqin	1					
Idleb	Idleb	Saraqab		1				
Idleb	Jisr-Ash-Shugur	Badama			1			
Idleb	Jisr-Ash-Shugur	Darkosh	1					
Idleb	Jisr-Ash-Shugur	Janudiyeh	1					
Rural Damascus	Duma	Sabe Byar	1			1		

Ps: The colored cells represent the highest alerts for each surveyed syndrome on district level

Lab Activities Epi Week 28

Syndrome	Pattern analysis	No. of Sampels	No. of positive samples	Positive sample distribution (District)
Measles	Measles IgM	8	6	4 Jabal'Saman, 1 Hama, 1 Edlib
Rubella	Rubella IgM	2	All suspected samples for Rubella IgM were negative	
Acute Jaundice Syndrome	HAV IgM	5	3	3 Idleb

Abbreviations

ABD	Acute Bloody Diarrhea	Mea	suspected Measles
OAD	Other Acute Diarrhea	Men	suspected Meningitis
AFP	Acute Flaccid Paralysis	Prop.Morb.	Proportional Morbidity
AJS	Acute Jaundice Syndrome	SARI	Severe Acute Respiratory Illness
AWD	Acute Watery Diarrhea	UCE	Unexplained Cluster Of Health Events
ILI	Influenza-like Illness	UCD	Unexplained Death
WASH	Water Sanitation Hygine	WBD	Water Borne Diseases
VPD	Vaccine Preventable Diseases	ARI	Acute Respiratory Illness