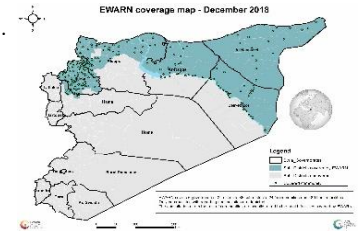
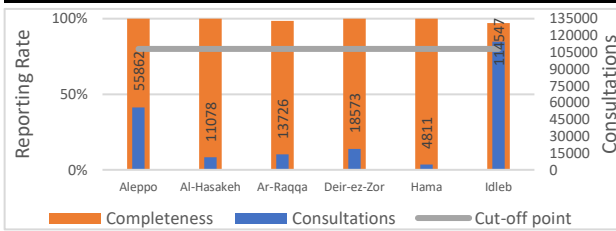


Highlights

- During Epi Week 48, (478/482) 99% of the health facilities across 08 Governorates provided surveillance data for all EWARN Syndroms this week 96% of reporting sites submitted the weekly reports on time.
- The consultations reported this week were 208294 (including 40% children under the age of five) compared to 240117 consultations in previous week.
- EWARN recorded 9 deaths cases due to Measles complications from beginning 2018 up to this Epi week distributed as follows: 5 in Deir ez Zor, 3 in Idleb and 1 in Aleppo rural.
- EWARN labs reported: 3 positive cases for Measles IgM (Jebel Saman), 8 positive cases for HAV IgM (Idleb 5 - A'zaz 2- Membij 1).
- The number of SARI cases was 541, with the highest number of alerts in Deir ez zor district (5 alerts).
- The highest syndromes reported were respectively: ILI (24772), OAD (13297), and AJS (746).
- Al-Hasakeh governorate recorded the highest proportional morbidity for OAD (26.2%), ILI (32.8%), ABD (0.5%), AJS (1.6%), and SARI (1.5%).
- Ar Raqqa governorate recorded the highest proportional morbidity for Leish (1.4%).

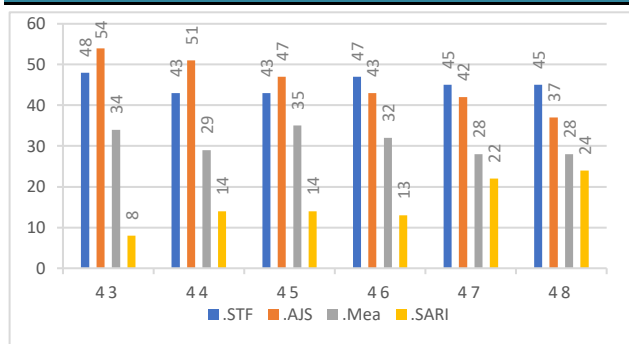


Reporting Rate and Consultations

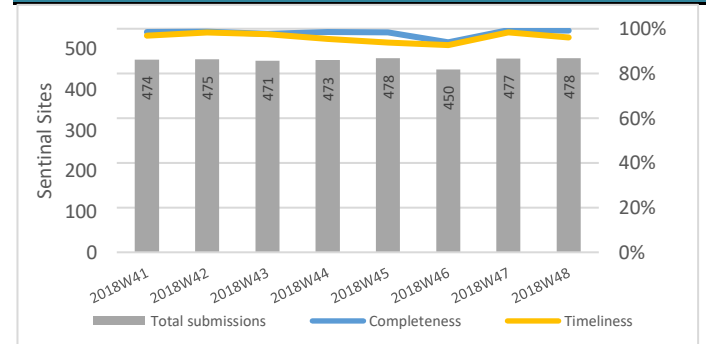


| Governorate | Reporting Sites | No. Sentinal Sites | Completeness |
|--------------|-----------------|--------------------|--------------|
| Aleppo | 119 | 120 | 99% |
| Al-Hasakeh | 93 | 93 | 100% |
| Ar-Raqqa | 74 | 74 | 100% |
| Deir-ez-Zor | 52 | 52 | 100% |
| Hama | 8 | 8 | 100% |
| Idlib | 132 | 135 | 98% |
| Total | 478 | 482 | 99% |

Numbers of Top 4 Alerts

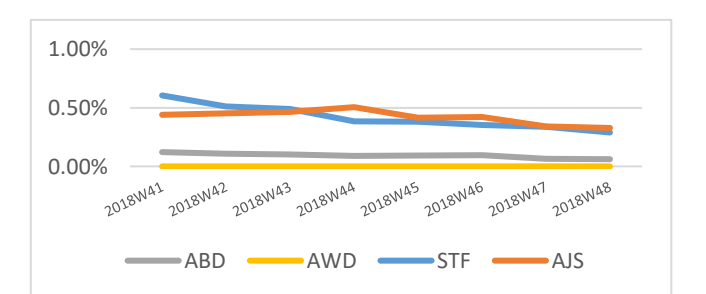
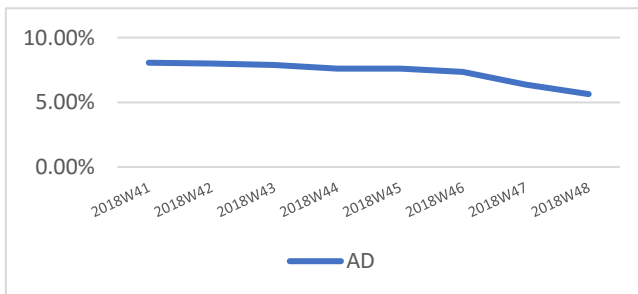


Reporting Rate and Timeliness



Water Borne Diseases details

- The number of the reported STF cases was 651, as well 746 new cases of AJS were reported.
- EWARN reported 13297 OAD cases
- Water borne diseases risk scale is being generated and followed on community level and on monthly basis in all EWARN coverage areas.
- EWARN informed partners & WASH team about the districts with high WBD levels.



Vaccine Preventable Diseases details

In Epi-week 48 /2018, the total number of new suspected cases of measles has decreased into 36 new cases.

-0 suspected measles case has been investigated in Epi Week 48.

-EWARN labs reported 3 positive case for Measles IgM out of 9 specimens (Jebel Saman).

-In the Epi week 48/2018, 2 suspected cases from Ar Raqqa governorate were reported, in Deir ez zor district the reported cases were 12 new suspected cases.

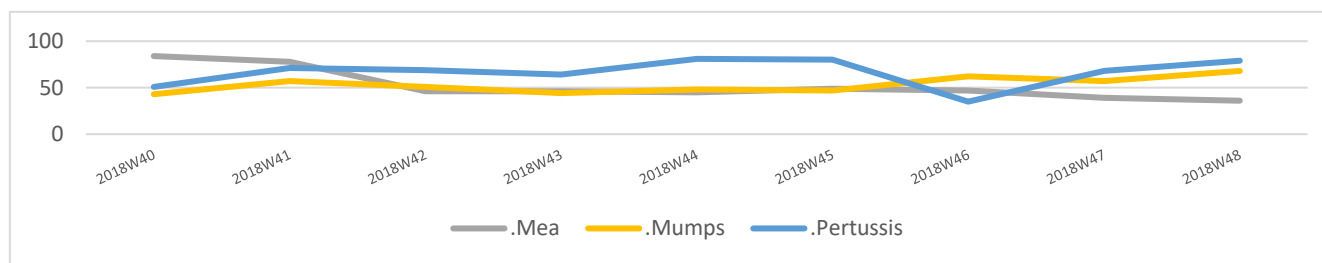
-In Aleppo, 0 reported case of suspected measles, whereas in Idleb governorate, the total number of suspected measles cases was 22 new cases: Harim 7, Idleb 4, Al Mare' 5, Jisr Ash Shugur 1 and Ariha 5.

-EWARN team followed the AEFI for the last MR campaign, 1162 zero-daily reports were received with 98% completeness. 126 AEFIs have been registered and all of them mild, except 1 case is moderate. There are no any serious or severe cases.

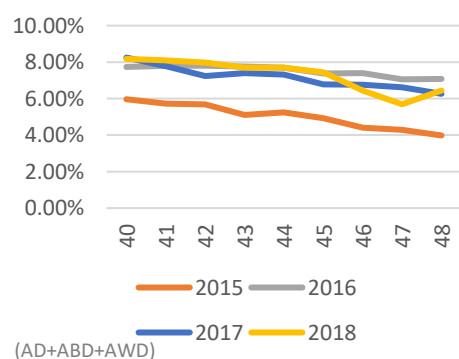
-Despite the number of measles cases has decreased compared with previous weeks, the reporting of new measles cases from different areas of Deir-ez- Zor ,Ar Raqqa , rural Aleppo and Idleb is still ongoing.

-The number of the reported suspected Pertussis cases was 68, the highest number reported from Qamishli district (19 cases).

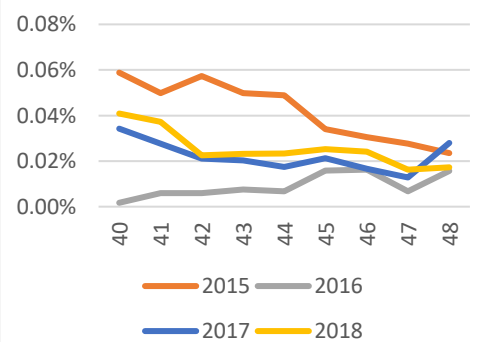
-The number of the reported suspected Mumps cases was 57, the highest number reported from Al Mayadin district (17 cases).



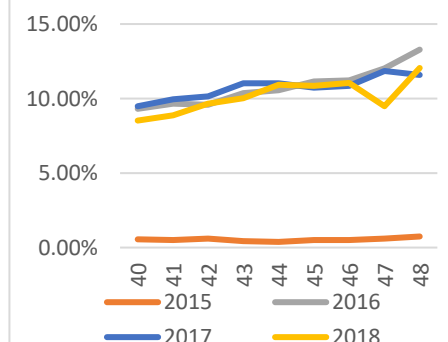
Prop. Morb. of Diarrheal Diseases



Prop. Morb. of Measles



Prop. Morb. of ILI



Case Numbers By Governorate and Age

| Gov. & Age | OAD | ABD | AWD | STF | AJS | ILI | SARI | AFP | Mea | Men | UCE | UCD | Leish | Others | Total | |
|--------------|--------------|------------|----------|------------|------------|--------------|------------|----------|-----------|------------|----------|----------|-------------|---------------|---------------|-------|
| Aleppo | <5 | 1836 | 8 | 0 | 1 | 36 | 3446 | 63 | 1 | 0 | 5 | 0 | 0 | 24 | 12767 | 18187 |
| | ≥5 | 1315 | 1 | 0 | 35 | 33 | 3912 | 22 | 2 | 0 | 5 | 0 | 0 | 76 | 30964 | 36365 |
| Idleb | <5 | 1977 | 10 | 0 | 24 | 119 | 4817 | 114 | 3 | 20 | 21 | 0 | 0 | 178 | 33194 | 40477 |
| | ≥5 | 1502 | 1 | 0 | 108 | 154 | 3639 | 36 | 1 | 2 | 8 | 0 | 0 | 343 | 59187 | 64981 |
| Hama | <5 | 190 | 0 | 0 | 1 | 2 | 857 | 0 | 0 | 0 | 0 | 0 | 0 | 16 | 601 | 1667 |
| | ≥5 | 177 | 0 | 0 | 1 | 3 | 648 | 1 | 0 | 0 | 0 | 0 | 0 | 21 | 2232 | 3083 |
| Ar-raqqqa | <5 | 841 | 9 | 0 | 14 | 30 | 1128 | 11 | 0 | 2 | 9 | 1 | 0 | 76 | 4818 | 6939 |
| | ≥5 | 376 | 8 | 0 | 35 | 28 | 723 | 14 | 0 | 0 | 2 | 1 | 0 | 110 | 4697 | 5994 |
| Deir-ez-Zor | <5 | 1062 | 24 | 0 | 24 | 116 | 893 | 79 | 0 | 11 | 25 | 0 | 0 | 105 | 6437 | 8776 |
| | ≥5 | 834 | 2 | 0 | 326 | 33 | 1054 | 43 | 0 | 1 | 4 | 0 | 0 | 108 | 7260 | 9665 |
| Al-Hasakeh | <5 | 1814 | 46 | 0 | 37 | 91 | 2262 | 107 | 0 | 0 | 19 | 0 | 0 | 45 | 2390 | 6811 |
| | ≥5 | 1373 | 19 | 0 | 45 | 101 | 1723 | 72 | 0 | 0 | 33 | 0 | 0 | 35 | 1948 | 5349 |
| Total | 13297 | 128 | 0 | 651 | 746 | 25102 | 562 | 7 | 36 | 131 | 2 | 0 | 1137 | 166495 | 208294 | |

Alerts' Numbers by District

| Governorate | District | Sub-district | AJS | Leish | Mea | OAD | SARI | STF |
|-------------|-----------------|--------------------|-----|-------|-----|-----|------|-----|
| Al-Hasakeh | Quamishli | Qahtaniyyeh | | | | | 1 | |
| Aleppo | Afrin | Afrin | | | | | 1 | |
| Aleppo | Al Bab | Al Bab | | | | | 1 | |
| Aleppo | Jarablus | Jarablus | | | | | 1 | |
| Aleppo | Jebel Saman | Daret Azza | 1 | | | | 1 | |
| Ar-Raqqa | Al-Thwarah | Al-Thwarah | | | | | | 1 |
| Ar-Raqqa | Al-Thwarah | Jurneyyeh | | | 1 | | | |
| Ar-Raqqa | Ar-Raqqa | Karama | | 1 | | | | |
| Deir-ez-Zor | Deir-ez-Zor | Kisreh | | 1 | | | | |
| Idleb | Al Ma'ra | Heish | | 1 | | | | |
| Idleb | Al Ma'ra | Kafr Nobol | | | 1 | | 1 | |
| Idleb | Al Ma'ra | Khan Shaykun | | 1 | | | | 1 |
| Idleb | Al Ma'ra | Ma'arrat An Nu'man | | 1 | | | 1 | |
| Idleb | Ariha | Ariha | | | 1 | | | |
| Idleb | Harim | Qourqeena | | | | 1 | | |
| Idleb | Jisr-Ash-Shugur | Darkosh | 1 | | | | | |
| Idleb | Jisr-Ash-Shugur | Janudiyeh | | | 1 | | | |

Ps: The colored cells represent the highest alerts for each surveyed syndrome on district level

Lab Activities Epi Week 48

| Syndrome | Pattern analysis | No. of Sampels | No. of positive samples | Positive sample distribution (District) |
|-------------------------|------------------|----------------|---|---|
| Measles | Measles IgM | 8 | 3 | 3 Jabal' Saman. |
| Rubella | Rubella IgM | 5 | All suspected samples for Rubella IgM were negative | |
| Acute Jaundice Syndrome | HAV IgM | 12 | 8 | 5 Idleb, 2 Ezaz, 1 Menbij |

Abbreviations

| | | | |
|------|------------------------------|------------|--------------------------------------|
| ABD | Acute Bloody Diarrhea | Mea | suspected Measles |
| OAD | Other Acute Diarrhea | Men | suspected Meningitis |
| AFP | Acute Flaccid Paralysis | Prop.Morb. | Proportional Morbidity |
| AJS | Acute Jaundice Syndrome | SARI | Severe Acute Respiratory Illness |
| AWD | Acute Watery Diarrhea | UCE | Unexplained Cluster Of Health Events |
| ILI | Influenza-like Illness | UCD | Unexplained Death |
| WASH | Water Sanitation Hygine | WBD | Water Borne Diseases |
| VPD | Vaccine Preventable Diseases | ARI | Acute Respiratory Illness |