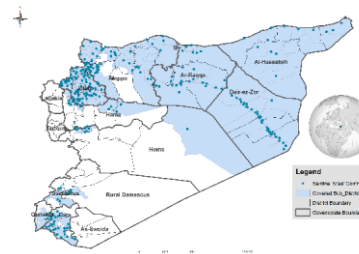
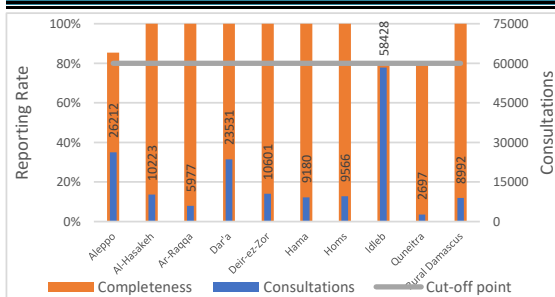


Highlights

- During Epi Week 35, (430/475) 91% of the health facilities across 10 Governorates provided surveillance data for all EWARN Syndromes this week, 71% of reporting sites submitted the weekly reports on time. The decline in timeliness is due [For more details regarding EWARN coverage please click here.](#)
- The consultations reported this week were 165407 (including 40% children under the age of five) compared to 219895 consultations in previous week.
- 10 AFP (Acute Flaccid Paralysis) cases were reported: 5 Deir-ez-zor, 3 Dar'a, 1 Aleppo, 1 Quneitra [For more details click here.](#) EWARN lab reported 1 positive case for Measles IgM and 2 positive cases for Salmonella IgM in Harim.
- The number of AJS cases was 464, with highest number of alerts in Abu Kamal (5 alerts).
- The number of OAD cases have not doubled this week
- The highest syndromes reported were respectively: OAD (15901), ILI (11423), and STF (1328).
- The highest proportional morbidity for STF (3.3%) were reported from Deir ez zor governorate.
- Al-Hasakeh governorate recorded the highest proportional morbidity for : OAD (34%), ILI (24.6%) and AJS (1.2%).

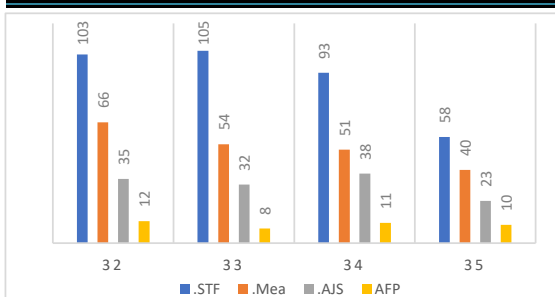


Reporting Rate and Consultations

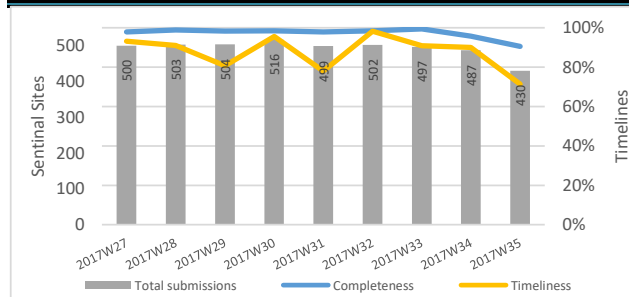


Governorate	Reporting Sites	No. Sentinal Sites	Completeness
Aleppo	99	116	85%
Al-Hasakeh	88	88	100%
Ar-Raqqa	31	31	100%
Dar'a	27	27	100%
Deir-ez-Zor	33	33	100%
Hama	15	15	100%
Homs	12	12	100%
Idleb	103	130	79%
Quneitra	4	5	80%
Rural Damascus	18	18	100%
Total	430	475	91%

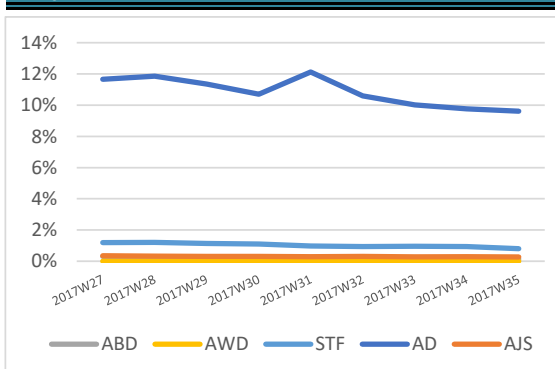
Numbers of Top 4 Alerts



Reporting Rate and Timeliness



Prop. Morb. of Water Borne Diseases



Water Borne Diseases details

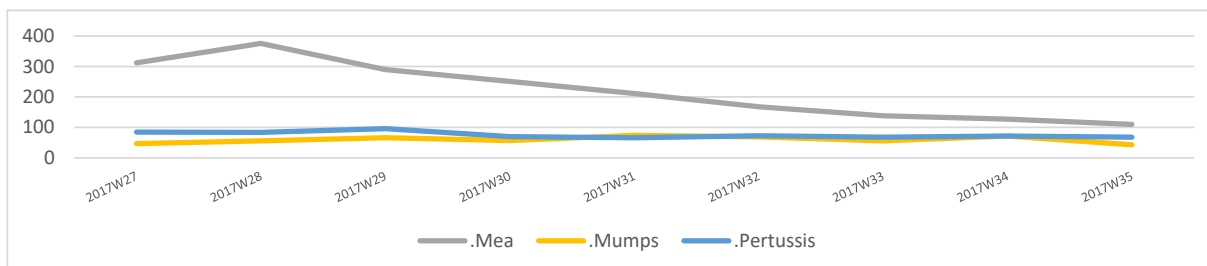
- The number of the reported STF cases was 1328, as well as 464 new cases of AJS were reported .
- EWARN reported 15901 OAD cases, The number of OAD cases have not doubled this week
- Follow up the response procedure in Jasim_Dar'a : the stool culture for 3 suspected cases of typhoid fever came negative . WATAN organization provided 100 liters of liquid chlorine for the private wells in cooperation with the local council , in addition to , EWARN team disseminated IEC materials to educate about Typhoid fever and prevention methods in the health facility.
- Cholera Risk scale is being generated and followed on weekly basis in the northern of Syria.
- EWARN informed partners & WASH team about the districts with high WBD levels.

Numbers of Vaccine Preventable Diseases (by cases)

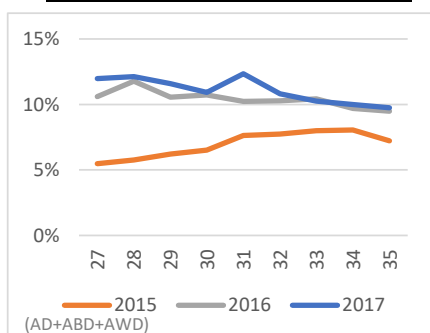
Vaccine Preventable Diseases details

In Epi-week 35/2017, 110 cases of suspected measles were reported.

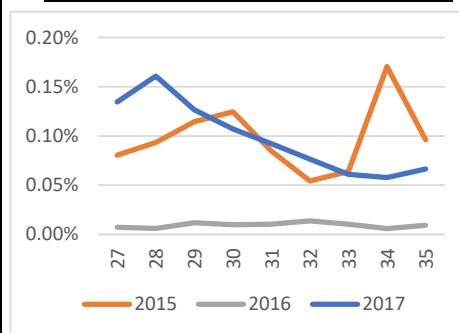
- A total 6 suspected measles cases were investigated in Epi week 35 in : A'zaz 1, Menbij, Al-Malikeyyeh 2 and Dar'a 2.
- In the Epi week 35/2017, 90 new cases of suspected measles were reported from Deir Ez zor as follows : (Abu Kamal 42, Al-Mayadin 43, Deir ez Zor district 5), 8 new suspected measles cases were reported from Menbij (eastern Aleppo.) The reporting of new measles cases from different areas of Menbij and Deir-ez- Zor is still ongoing.
- It was recommended to: isolate the cases, personal hygiene, providing vitamin A and explain to parents about the importance of the vaccine.
- It is important to consider measles vaccination campaigns, taking into account the spread of outbreaks, populations at risk and age groups at risk.
- The numbers of the reported suspected Pertussis cases was 68, the highest number reported from Al Mayadin district (22 cases).
- The numbers of the reported suspected Mumps cases was 43, the highest number reported from Jebel Saman district (14 cases).



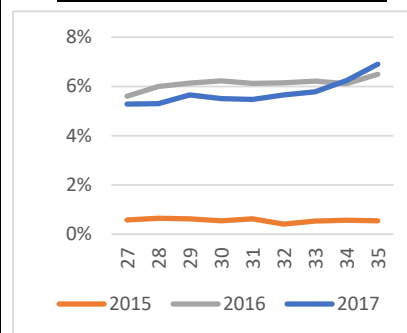
Prop. Morb. of Diarrheal Diseases



Prop. Morb. of Measles



Prop. Morb. of ILI



Case Numbers By Governorate and Age

Gov. & Age	OAD	ABD	AWD	STF	AJS	ILI	SARI	AFP	Mea	Men	UCE	UCD	Leish	Others	Total	
Aleppo	<5	1292	3	0	4	4	1236	3	1	7	1	0	0	30	4630	7211
	≥5	1018	11	0	74	22	1080	1	0	3	5	0	0	91	16696	19001
Idleb	<5	2092	8	0	44	39	1440	18	0	4	9	0	0	108	14919	18681
	≥5	1757	6	0	265	54	1623	9	0	0	6	0	0	255	35772	39747
Hama	<5	210	1	0	5	0	141	4	0	0	0	0	0	14	2196	2571
	≥5	377	0	0	29	0	280	0	0	0	0	0	0	47	5876	6609
Ar-raqqa	<5	268	0	0	3	6	37	2	0	0	0	2	0	11	2297	2626
	≥5	218	3	0	17	11	41	1	0	1	1	0	0	11	3047	3351
Deir-ez-Zor	<5	2008	59	0	76	79	549	55	5	56	21	0	0	2	3551	6461
	≥5	634	36	0	367	41	313	18	0	34	2	0	0	8	2687	4140
Al-Hasakeh	<5	2086	58	0	56	74	1465	29	0	1	24	0	0	18	2210	6021
	≥5	1388	30	0	36	52	1053	15	0	1	14	0	0	32	1581	4202
Homs	<5	445	0	0	3	8	426	5	0	0	0	0	0	0	3032	3919
	≥5	383	1	0	26	12	371	2	0	0	0	0	0	0	4852	5647
R. Damascus	<5	228	0	0	11	1	362	2	0	0	0	0	0	0	2285	2889
	≥5	146	0	0	121	16	205	0	0	0	0	0	0	0	5615	6103
Dar'a	<5	766	1	0	44	17	374	5	2	3	2	0	0	1	8321	9536
	≥5	496	5	0	133	26	382	8	1	0	4	0	0	4	12936	13995
Quneitra	<5	65	0	0	6	1	18	0	1	0	1	0	0	1	1307	1400
	≥5	24	1	0	8	1	27	0	0	0	0	0	0	0	1236	1297
Total	15901	223	0	1328	464	11423	177	10	110	90	2	0	633	135046	165407	

Alerts' Numbers by District

District	ABD	AWD	AJS	STF	SARI	Leish	Men	Mea	AFP	Total
Abu Kamal	1	0	5	8	2	0	0	12	0	28
Afrin	0	0	0	0	0	0	0	0	0	0
Ain Al Arab	0	0	0	0	0	0	0	0	0	0
Al Ma'ra	0	0	0	3	0	0	0	1	0	4
Al Mayadin	1	0	2	6	1	0	1	10	5	26
Al-Hasakeh	0	0	0	0	0	0	0	0	0	0
Al-Malikeyyeh	0	0	1	0	0	0	0	2	0	3
Ariha	0	0	2	1	0	0	0	0	0	3
Ar-Raqqa	0	0	0	0	0	0	0	0	0	0
Ar-Rastan	0	0	0	1	0	0	0	0	0	1
As-Salamiyeh	0	0	0	3	0	0	0	0	0	3
As-Sanamayn	0	0	0	0	0	0	0	0	0	0
As-Suqaylabiyah	0	0	0	0	0	0	0	0	0	0
Ath-Thawrah	0	0	0	0	0	0	0	0	0	0
A'zaz	0	0	0	0	0	0	0	2	0	2
Dar'a	0	0	3	4	0	0	0	1	2	10
Deir-ez-Zor	2	0	3	6	2	0	1	2	0	16
Duma	0	0	0	0	0	0	0	0	0	0
Hama	0	0	0	0	0	0	0	0	0	0
Harim	0	0	1	5	0	0	0	0	0	6
Homs	0	0	1	0	0	0	0	0	0	1
Idleb	0	0	1	3	1	0	0	2	0	7
Izra'	0	0	0	2	0	0	0	1	1	4
Jisr-Ash-Shugur	0	0	0	3	0	0	0	0	0	3
Menbij	0	0	1	0	0	0	0	6	1	8
Muhradah	0	0	0	0	0	0	0	0	0	0
Quamishli	0	0	1	3	0	0	0	0	0	4
Quneitra	0	0	0	0	0	0	0	0	1	1
Ras Al Ain	0	0	0	0	0	0	0	0	0	0
Rural Damascus	0	0	1	7	0	0	0	0	0	8
Tell Abiad	0	0	1	1	0	0	0	1	0	3
As-Safira	0	0	0	0	0	0	0	0	0	0
Jebel Saman	0	0	0	2	0	0	0	0	0	2
Grand Total	4	0	23	58	6	0	2	40	10	143

Ps: The colored cells represent the highest alerts for each surveyed syndrome on district level

Lab Activities Epi Week 35

Syndrome	No. of Sampels	No. of positive samples	Positive sample distribution (District)
Measles IgM	1	1	1 Ma'ara
Salmonella IgM	2	2	Harem
Stool Culture for Salmonella	2	0	Harem

ABD	Acute Bloody Diarrhea	Mea	suspected Measles
OAD	Other Acute Diarrhea	Men	suspected Meningitis
AFP	Acute Flaccid Paralysis	Prop.Morb.	Proportional Morbidity
AJS	Acute Jaundice Syndrome	SARI	Severe Acute Respiratory Illness
AWD	Acute Watery Diarrhea	UCE	Unexplained Cluster Of Health Events
ILI	Influenza-like Illness	UCD	Unexplained Death
WASH	Water Sanitation Hygine	WBD	Water Borne Diseases
VPD	Vaccine Preventable Diseases	ARI	Acute Respiratory Illness