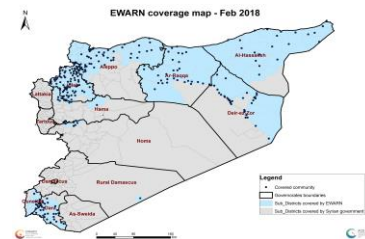
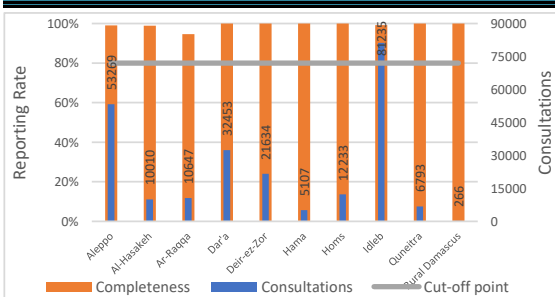


Highlights

- The measles epidemic is hitting the northern governorates of Syria, where the number of measles cases since the beginning of 2018 is 4833 cases of measles, while it was 9640 cases during 2017, out of which 525 cases reported in the first quarter of 2017. Under immunization is addressed as the main reason of the continuing epidemic. EWARN is coordinating with SIG in order to enhance routine vaccine centers' activities and implement measles vaccine campaign in April.
- During Epi Week 10, (500/507) 99% of the health facilities across 10 Governorates provided surveillance data for all EWARN Syndroms this week 90% of reporting sites submitted the weekly reports on time.
- The consultations reported this week were 233647 (including 40% children under the age of five) compared to 219097 consultations in previous week.
- 5 AFP (Acute Flaccid Paralysis) cases were reported 2 Deir-ez-zor - 2 Aleppo - 1 Ar-raqqqa
- EWARN lab reported: 37 positive cases for Measles IgM 1 Menbij- 2 jarablus- 3 A'zaz - 9 Harim- 16 idleb - 5 Raqqqa, 1 Al'Hasakeh.
- The number of SARI cases was 535, with highest number of alerts in Ar Raqqqa district (13 alerts).
- The number of OAD cases have not doubled this week
- The highest syndromes reported were respectively: ILI (29666) , OAD (12136) and AJS (958).
- Al-Hasakeh governorate recorded the highest proportional morbidity for OAD (22.2%) , ILI (36.2%) , SARI (1.6%) , AJS (2.0%) and ABD (0.8%).
- Deir ez Zor governorate recorded the highest proportional morbidity for STF (1.8%) .
- Ar Raqqqa governorate recorded the highest proportional morbidity for suspected Measles (2.3%) .

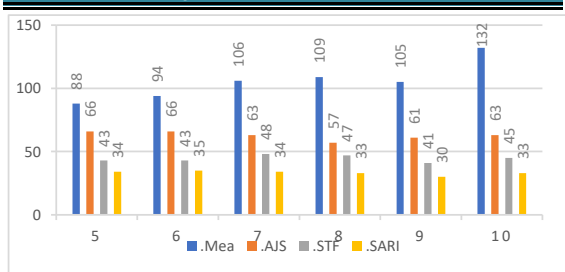


Reporting Rate and Consultations

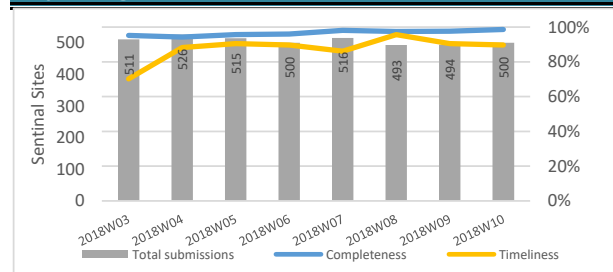


Governorate	Reporting Sites	No. Sentinal Sites	Completeness
Aleppo	108	109	99%
Al-Hasakeh	89	90	99%
Ar-Raqqqa	70	74	95%
Dar'a	31	31	100%
Deir-ez-Zor	49	49	100%
Hama	9	9	100%
Homs	12	12	100%
Idleb	120	121	99%
Quneitra	11	11	100%
Rural Damascus	1	1	100%
Total	500	507	99%

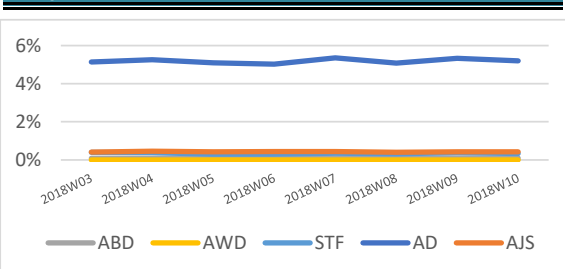
Numbers of Top 4 Alerts



Reporting Rate and Timeliness



Prop. Morb. of Water Borne Diseases



Water Borne Diseases details

- The number of the reported STF cases was 736, as well as 958 new cases of AJS were reported .
- EWARN reported 12136 OAD cases, The number of OAD cases have not doubled this week
- Water borne diseases risk scale is being generated and followed on community level and on monthly basis in all EWARN coverage areas.
- EWARN informed partners & WASH team about the districts with high WBD levels.

Vaccine Preventable Diseases details

In Epi-week 10 /2018, 670 cases of suspected measles were reported.

- 89 suspected measles cases were investigated in Epi week 10 : Aleppo rural 37, Idleb rural 22, Hama 2 , Ar Raqqa 9, Deir ez Zor 10 and Al Hasakeh 9.

- EWARN labs reported 35 positive cases for Measles IgM out of 41 specimens: Harim 8, Idleb 16 , Al Bab 1, A'zaz 1, Menbij 1 , Jarablus 2 , Tell Abiad 1 and Ar Raqqa 5.

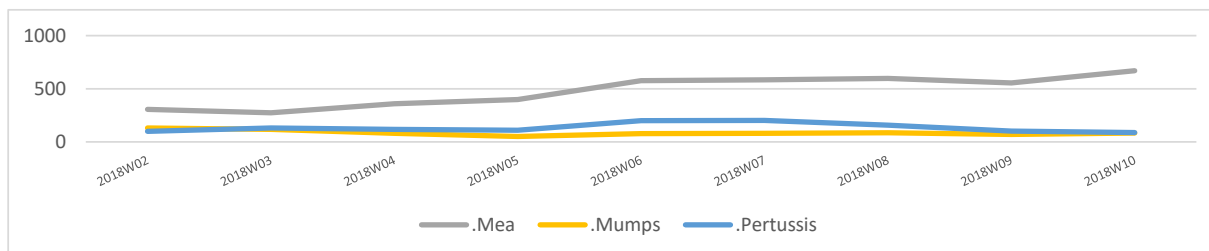
- In the Epi week 10/2018, 248 new cases of suspected measles were reported from Ar Raqqa governorate (Ar Raqqa district 222 ,Tell Abiad 15, Ath-Thawrah 11), in addition to another 177 new cases were reported from Idleb governorate mainly in Harim and Idleb districts (101 and 53 suspected cases respectively).

- The reporting of new measles cases from different areas of Deir-ez- Zor ,Ar Raqqa and Idleb is still ongoing.

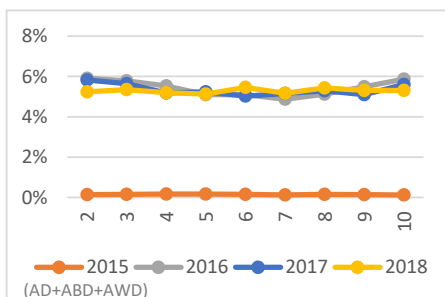
- It was recommended to: isolate the cases, personal hygiene, providing vitamin A and explain to parents about the importance of the vaccine.

- The numbers of the reported suspected Pertussis cases was 88 , the highest number reported from Deir ez Zor district (28 cases).

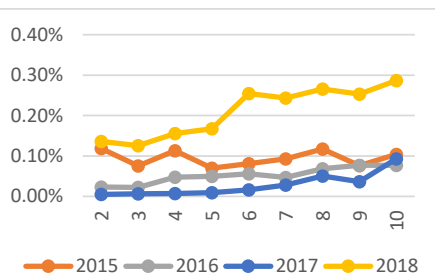
- The numbers of the reported suspected Mumps cases was 82, the highest number reported from A'zaz district (21 cases).



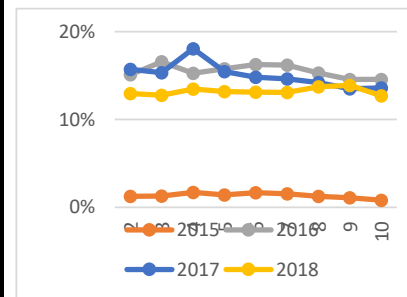
Prop. Morb. of Diarrheal Diseases



Prop. Morb. of Measles



Prop. Morb. of ILI



Case Numbers By Governorate and Age

Gov. & Age	OAD	ABD	AWD	STF	AJS	ILI	SARI	AFP	Mea	Men	UCE	UCD	Leish	Others	Total	
Aleppo	<5	1341	9	0	4	46	4043	36	1	63	8	0	0	66	13000	18617
	≥5	1003	4	0	41	87	4045	7	1	58	3	0	0	163	29240	34652
Idleb	<5	1613	6	0	39	70	3105	63	0	136	14	0	0	147	23042	28235
	≥5	1247	0	0	115	91	2897	35	0	41	7	0	0	453	48114	53000
Hama	<5	144	0	0	1	0	393	0	0	1	0	0	0	17	1083	1639
	≥5	154	0	0	2	3	521	0	0	1	0	0	0	45	2742	3468
Ar-raqqqa	<5	460	1	0	11	110	664	83	1	130	1	0	0	45	3413	4919
	≥5	287	2	0	22	84	628	74	0	118	0	0	2	69	4442	5728
Deir-ez-Zor	<5	977	69	0	89	97	2185	31	2	68	9	1	0	375	5997	9900
	≥5	932	83	0	302	129	2271	23	0	48	1	0	0	456	7489	11734
Al-Hasakeh	<5	1365	42	0	36	99	2172	117	0	4	19	0	0	43	2107	6004
	≥5	861	34	0	34	99	1448	46	0	2	10	0	0	43	1429	4006
Homs	<5	415	1	0	3	1	1117	0	0	0	0	0	0	4	3890	5431
	≥5	360	0	0	1	9	928	0	0	0	0	0	0	5	5499	6802
R. Damascus	<5	2	0	0	0	0	6	0	0	0	0	0	0	31	39	
	≥5	3	0	0	0	0	17	0	0	0	0	0	0	13	194	
Dar'a	<5	491	1	0	4	11	1122	9	0	0	2	0	0	1	11599	13240
	≥5	282	3	0	32	22	1138	11	0	0	0	0	0	6	17719	19213
Quneitra	<5	155	0	0	0	0	515	0	0	0	0	0	0	2650	3320	
	≥5	44	0	0	0	0	451	0	0	0	0	0	0	2978	3473	
Total		12136	255	0	736	958	29666	535	5	670	74	1	2	1951	186658	233647

Alerts' Numbers by District

Governorate	District	Sub-district	ABD	AJS	Leish	Mea	OAD	SARI	STF
Al-Hasakeh	Al Malika	Ya'robiyah				1			
Al-Hasakeh	Quamishli	Quamishli				1			
Al-Hasakeh	Ras Al Ain	Darbasiyah	1						
Aleppo	A'zaz	A'zaz							1
Aleppo	A'zaz	Tall Refaat				1	1		
Aleppo	Afrin	Afrin		1		1			
Aleppo	Jarablus	Ghandorah				1			
Aleppo	Jebel Saman	Atareb			1				
Aleppo	Jebel Saman	Daret Azza				1			
Aleppo	Jebel Saman	Haritan				1			
Ar-Raqqa	Al-Thwarah	Al-Thwarah				1			
Ar-Raqqa	Al-Thwarah	Mansura				1			
Ar-Raqqa	Tell Abiad	Tell Abiad				1			
Deir-ez-Zor	Abu Kamal	Susat				1			
Deir-ez-Zor	Al Mayadin	Thiban				1			
Deir-ez-Zor	Deir-ez-Zor	Basira			1				
Deir-ez-Zor	Deir-ez-Zor	Deir-ez-Zor			1				
Deir-ez-Zor	Deir-ez-Zor	Kisreh			1				
Deir-ez-Zor	Deir-ez-Zor	Sur			1				
Hama	As Suqaylabiyah	Madiq Castle				1			
Homs	Ar Rastan	Ar-Rastan		1					
Idleb	Al Ma'ra	Heish			1	1			1
Idleb	Al Ma'ra	Kafr Nobol				1	1	1	
Idleb	Al Ma'ra	Ma'arrat An Nu'man		1					
Idleb	Harim	Dana			1	1			
Idleb	Harim	Harim				1			
Idleb	Harim	Qourqeena							1
Idleb	Harim	Salqin				1		1	
Idleb	Idleb	Bennsh				1			
Idleb	Idleb	Maaret Tamsrin				1			
Idleb	Idleb	Saraqab			1	1			
Idleb	Idleb	Teftnaz							1
Idleb	Jisr-Ash-Shugur	Darkosh				1			
Idleb	Jisr-Ash-Shugur	Janudiyeh			1	1			

Ps: The colored cells represent the highest alerts for each surveyed syndrome on sub-district level

Lab Activities Epi Week 10

Syndrome	Pattern analysis	No. of Sampels	No. of positive samples	Positive sample distribution (District)
Measles	Measles IgM	44	37	1 Menbij- 2 jarablus- 3 A'zaz 9 Harim- 16 idleb - 5 Raqqa, 1 Al'Hasakeh.
Rubella	Rubella IgM	7	All suspected samples for Rubella IgM were negative	

Abbreviations

ABD	Acute Bloody Diarrhea	Mea	suspected Measles
OAD	Other Acute Diarrhea	Men	suspected Meningitis
AFP	Acute Flaccid Paralysis	Prop.Morb.	Proportional Morbidity
AJS	Acute Jaundice Syndrome	SARI	Severe Acute Respiratory Illness
AWD	Acute Watery Diarrhea	UCE	Unexplained Cluster Of Health Events
ILI	Influenza-like Illness	UCD	Unexplained Death
WASH	Water Sanitation Hygiene	WBD	Water Borne Diseases
VPD	Vaccine Preventable Diseases	ARI	Acute Respiratory Illness