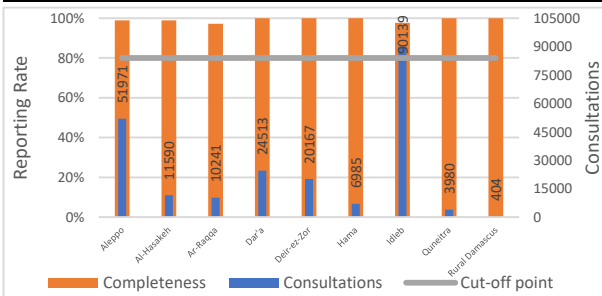


Highlights

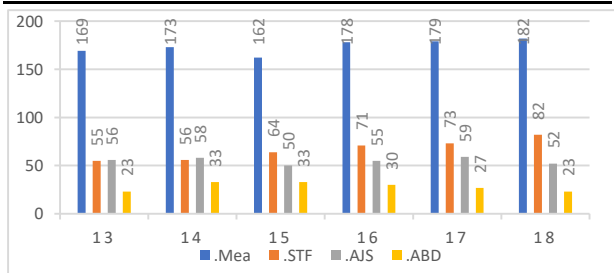
- The measles epidemic is hitting the northern governorates of Syria, where the number of measles cases since the beginning of 2018 is 12582 cases of measles, while it was 9640 cases during 2017. Under immunization is addressed as the main reason of the continuing epidemic. EWARN is coordinating with SIG in order to enhance routine vaccine centers activities.
- During Epi Week 20, (495/502) 99% of the health facilities across 10 Governorates provided surveillance data for all EWARN Syndroms this week 97% of reporting sites submitted the weekly reports on time.
- The consultations reported this week were 222869 (including 40% children under the age of five) compared to 222072 consultations in previous week.
- 9 AFP (Acute Flaccid Paralysis) cases were reported
EWARN lab reported: 31 positive cases for Measles IgM (Jebel Saman 3, Harim 4, Jisr-Ash-Shugur 1, Idleb 8 , Tell Abiad 2, Ras Al Ain 6, Quamishli 6, Al-Malikeyyeh 1), and 1 positive case for Rubella IgM (Harim) .
- The number of AJS cases was 861, with highest number of alerts in Deir ez zor district (11 alerts).
- The number of OAD cases have not doubled
The highest syndromes reported were respectively: ILI (17193) , OAD (16965) and STF (1081).
Al-Hasakeh governorate recorded the highest proportional morbidity for OAD (29.8%) , ILI (26.8%), and AJS (1.7%).
Deir ez Zor governorate recorded the highest proportional morbidity for STF (2.0%), ABD (1.3%) and Leish (2.1%).

Reporting Rate and Consultations

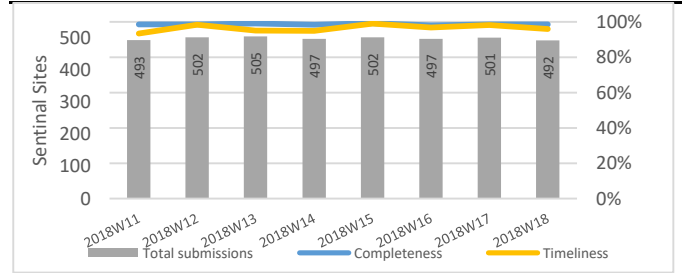


| Governorate | Reporting Sites | No. Sentinal Sites | Completeness |
|----------------|-----------------|--------------------|--------------|
| Aleppo | 101 | 102 | 99% |
| Al-Hasakeh | 93 | 94 | 99% |
| Ar-Raqqa | 69 | 70 | 99% |
| Dar'a | 31 | 31 | 100% |
| Deir-ez-Zor | 52 | 52 | 100% |
| Hama | 9 | 9 | 100% |
| Idleb | 128 | 132 | 97% |
| Quneitra | 11 | 11 | 100% |
| Rural Damascus | 1 | 1 | 100% |
| Total | 495 | 502 | 99% |

Numbers of Top 4 Alerts

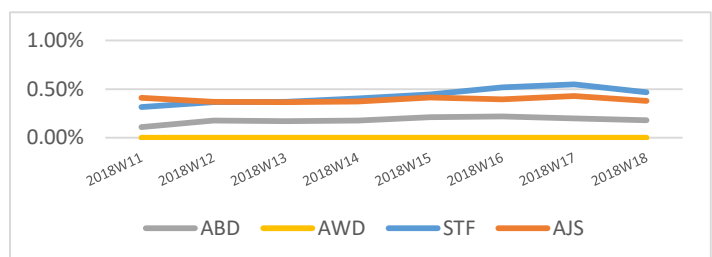
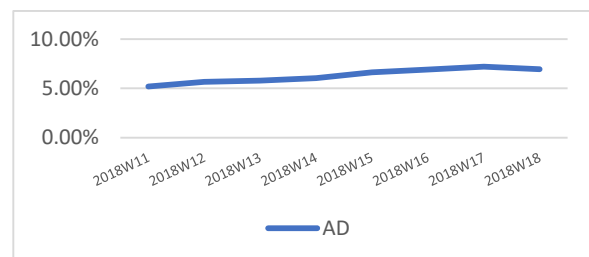


Reporting Rate and Timeliness



Water Borne Diseases details

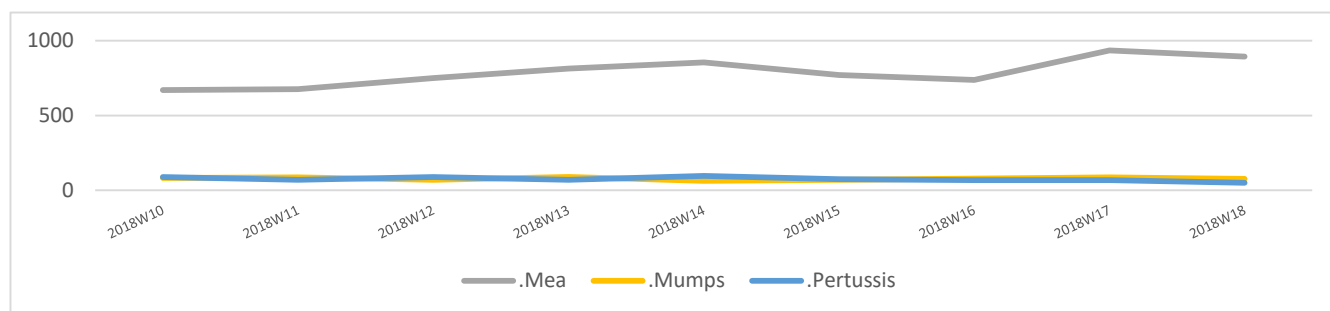
- The number of the reported STF cases was 1081, as well as 861 new cases of AJS were reported.
- EWARN reported 16965 OAD cases, The number of OAD cases have not doubled
- An alert of a suspected case of cholera was detected on 14th May in Jizeh_Dar'a. The case is a 10 years old male child with watery diarrhea and vomiting. Upon investigation, he was severely dehydrated and hypotensive. RDT was negative, despite that a stool culture was done in EWARN lab in Dar'a and the result was negative as well. The contacts showed neither similar complains nor signs. The patient was managed with IV fluids and discharge from the hospital the next day.
- Water borne diseases risk scale is being generated and followed on community level and on monthly basis in all EWARN coverage areas.
- EWARN informed partners & WASH team about the districts with high WBD levels.



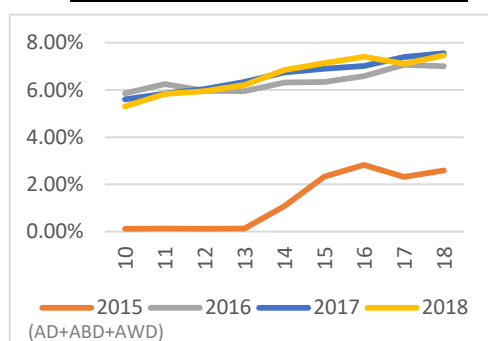
Vaccine Preventable Diseases details

In Epi-week 20 /2018, 613 cases of suspected measles were reported.

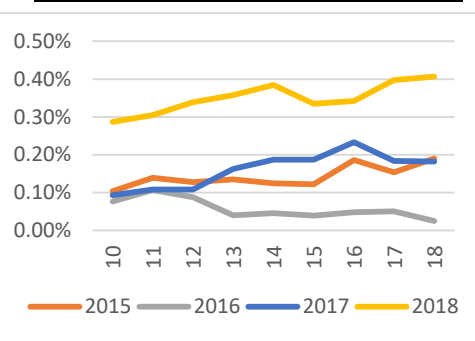
- 43 suspected measles cases were investigated in Epi week 20 : Aleppo rural 17, Idleb rural 13 , Hama 1 , Tell Abiad 2, and Al Hasakeh 10.
- EWARN labs reported 31 positive cases for Measles IgM out of 40 specimens: Jebel Saman 3, Harim 4, Jisr-Ash-Shugur 1, Idleb 8 , Tell Abiad 2, Ras Al Ain 6, Quamishli 6, Al-Malikeyyeh 1 ,with 1 positive IgM case of German measles (Rubella) in Harim.
- In the Epi week 20/2018, 162 new cases of suspected measles were reported from Ar Raqqa governorate (Ar Raqqa district 133 ,Tell Abiad 17, Ath-Thawrah 12), in addition to 128 suspected cases from Deir ez zor governorate (Deir ez zor district 90 ,Mayadin 31, Abu Kamal 7). While reporting another 107 new cases were from Aleppo governorate (Jebel Saman 48, Menbij 12, Jarablus 5, A'zaz 24, Al Bab 16, and Ain Al Arab 2).
- The reporting of new measles cases from different areas of Deir-ez- Zor ,Ar Raqqa , rural Aleppo and Idleb is still ongoing.
- It was recommended to: isolate the cases, personal hygiene, providing vitamin A and explain to parents about the importance of the vaccine.
- The number of the reported suspected Pertussis cases was 69, the highest number reported from Al Mayadin district (16 cases).
- The number of the reported suspected Mumps cases was 103, the highest number reported from Al Bab district (29 cases).



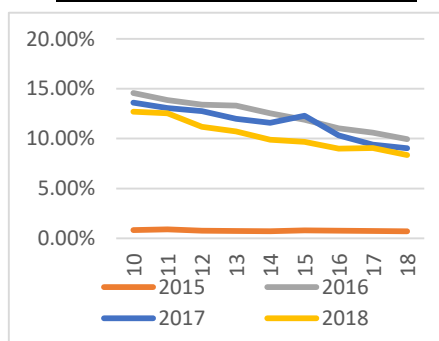
Prop. Morb. of Diarrheal Diseases



Prop. Morb. of Measles



Prop. Morb. of ILI



Case Numbers By Governorate and Age

| Gov. & Age | OAD | ABD | AWD | STF | AJS | ILI | SARI | AFP | Mea | Men | UCE | UCD | Leish | Others | Total | |
|--------------|-----|--------------|------------|----------|-------------|------------|--------------|------------|----------|------------|------------|------------|----------|-------------|---------------|---------------|
| Aleppo | <5 | 1922 | 18 | 0 | 6 | 29 | 2400 | 15 | 0 | 53 | 5 | 0 | 0 | 61 | 13886 | 18395 |
| | ≥5 | 1410 | 1 | 0 | 63 | 35 | 2554 | 2 | 3 | 54 | 8 | 0 | 0 | 201 | 30833 | 35164 |
| Idleb | <5 | 2576 | 11 | 0 | 43 | 66 | 2413 | 23 | 1 | 118 | 21 | 54 | 0 | 189 | 25524 | 31039 |
| | ≥5 | 1650 | 4 | 0 | 294 | 155 | 2280 | 22 | 0 | 88 | 5 | 149 | 0 | 486 | 55819 | 60952 |
| Hama | <5 | 249 | 0 | 0 | 1 | 0 | 305 | 0 | 0 | 1 | 0 | 0 | 0 | 8 | 1310 | 1874 |
| | ≥5 | 243 | 0 | 0 | 6 | 3 | 363 | 0 | 0 | 0 | 0 | 0 | 0 | 35 | 3150 | 3800 |
| Ar-raqqa | <5 | 603 | 18 | 0 | 23 | 68 | 381 | 30 | 0 | 87 | 1 | 1 | 1 | 65 | 3141 | 4419 |
| | ≥5 | 408 | 16 | 0 | 31 | 58 | 355 | 40 | 0 | 75 | 0 | 0 | 0 | 54 | 4355 | 5392 |
| Deir-ez-Zor | <5 | 1314 | 142 | 0 | 77 | 90 | 683 | 29 | 3 | 69 | 19 | 0 | 0 | 172 | 6415 | 9013 |
| | ≥5 | 1312 | 120 | 0 | 310 | 100 | 712 | 14 | 1 | 59 | 9 | 0 | 0 | 246 | 7842 | 10725 |
| Al-Hasakeh | <5 | 2150 | 68 | 0 | 33 | 111 | 1932 | 59 | 0 | 7 | 20 | 2 | 0 | 44 | 2616 | 7042 |
| | ≥5 | 1493 | 18 | 0 | 48 | 101 | 1344 | 45 | 0 | 0 | 24 | 2 | 0 | 41 | 2084 | 5200 |
| R. Damascus | <5 | 0 | 0 | 0 | 0 | 0 | 8 | 0 | 0 | 0 | 0 | 0 | 0 | 0 | 31 | 39 |
| | ≥5 | 0 | 0 | 0 | 0 | 0 | 5 | 0 | 0 | 0 | 0 | 0 | 0 | 0 | 127 | 132 |
| Dar'a | <5 | 792 | 2 | 0 | 7 | 19 | 523 | 8 | 1 | 1 | 1 | 1 | 0 | 2 | 9077 | 10434 |
| | ≥5 | 507 | 8 | 1 | 121 | 26 | 625 | 9 | 0 | 0 | 3 | 1 | 0 | 12 | 13769 | 15082 |
| Quneitra | <5 | 221 | 2 | 0 | 2 | 0 | 136 | 0 | 0 | 1 | 0 | 0 | 0 | 0 | 1649 | 2011 |
| | ≥5 | 115 | 3 | 0 | 16 | 0 | 174 | 0 | 0 | 0 | 0 | 0 | 0 | 0 | 1848 | 2156 |
| Total | | 16965 | 431 | 1 | 1081 | 861 | 17193 | 296 | 9 | 613 | 116 | 210 | 1 | 1616 | 183476 | 222869 |

Alerts' Numbers by District

| Governorate | District | Sub-district | ABD | AJS | Leish | Mea | OAD | STF |
|-------------|--------------|--------------------|-----|-----|-------|-----|-----|-----|
| Al-Hasakeh | Al Malika | Al Malika | 0 | 0 | 0 | 1 | 0 | 0 |
| Al-Hasakeh | Quamishli | Quamishli | 0 | 0 | 0 | 1 | 0 | 0 |
| Aleppo | A'zaz | Suran | 0 | 0 | 0 | 1 | 0 | 0 |
| Aleppo | Jebel Saman | Haritan | 0 | 0 | 0 | 1 | 0 | 0 |
| Aleppo | Jebel Saman | Jebel Saman | 0 | 0 | 0 | 0 | 1 | 0 |
| Aleppo | Jebel Saman | Zarbah | 0 | 0 | 0 | 1 | 0 | 0 |
| Aleppo | Menbij | Menbij | 0 | 0 | 0 | 1 | 0 | 0 |
| Ar-Raqqa | Al-Thwarah | Al-Thwarah | 1 | 0 | 0 | 0 | 0 | 0 |
| Ar-Raqqa | Ar-Raqqa | Ar-Raqqa | 0 | 0 | 1 | 0 | 0 | 0 |
| Dar'a | As Sanamayn | As Sanamayn | 0 | 1 | 0 | 0 | 0 | 0 |
| Deir-ez-Zor | Abu Kamal | Susat | 0 | 0 | 0 | 1 | 0 | 0 |
| Deir-ez-Zor | Deir-ez-Zor | Basira | 0 | 0 | 1 | 0 | 0 | 0 |
| Deir-ez-Zor | Deir-ez-Zor | Deir-ez-Zor | 0 | 0 | 1 | 0 | 0 | 0 |
| Deir-ez-Zor | Deir-ez-Zor | Kisreh | 0 | 0 | 1 | 0 | 0 | 0 |
| Deir-ez-Zor | Deir-ez-Zor | Sur | 0 | 0 | 1 | 0 | 0 | 0 |
| Hama | As Salamiyeh | As-Saan | 0 | 0 | 0 | 0 | 1 | 0 |
| Idleb | Al Ma'ra | Heish | 0 | 0 | 1 | 0 | 0 | 0 |
| Idleb | Al Ma'ra | Ma'arrat An Nu'man | 0 | 0 | 1 | 0 | 0 | 0 |
| Idleb | Al Ma'ra | Sanjar | 0 | 0 | 0 | 1 | 0 | 0 |
| Idleb | Ariha | Ariha | 0 | 0 | 1 | 0 | 0 | 0 |
| Idleb | Harim | Dana | 0 | 0 | 1 | 0 | 0 | 0 |
| Idleb | Idleb | Saraqab | 0 | 0 | 1 | 0 | 0 | 0 |
| Quneitra | Quneitra | Al-Khashniyyeh | 0 | 0 | 0 | 0 | 0 | 1 |

Ps: The colored cells represent the highest alerts for each surveyed syndrome on district level

Lab Activities Epi Week 20

| Syndrome | Pattern analysis | No. of Sampels | No. of positive samples | Positive sample distribution (District) |
|----------|------------------|----------------|-------------------------|--|
| Measles | Measles IgM | 40 | 31 | 5 Jabal'Saman, 15 Harem, 4 Idleb, 5 Jisr-Ashugur, 1 As-Suqaylabiyah, 1 Dar'a |
| Rubella | Rubella IgM | 9 | 1 | 1 Harem |
| | | | | |

Abbreviations

| | | | |
|------|------------------------------|------------|--------------------------------------|
| ABD | Acute Bloody Diarrhea | Mea | suspected Measles |
| OAD | Other Acute Diarrhea | Men | suspected Meningitis |
| AFP | Acute Flaccid Paralysis | Prop.Morb. | Proportional Morbidity |
| AJS | Acute Jaundice Syndrome | SARI | Severe Acute Respiratory Illness |
| AWD | Acute Watery Diarrhea | UCE | Unexplained Cluster Of Health Events |
| ILI | Influenza-like Illness | UCD | Unexplained Death |
| WASH | Water Sanitation Hygine | WBD | Water Borne Diseases |
| VPD | Vaccine Preventable Diseases | ARI | Acute Respiratory Illness |