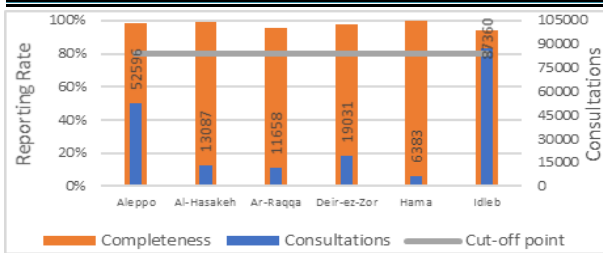


Highlights

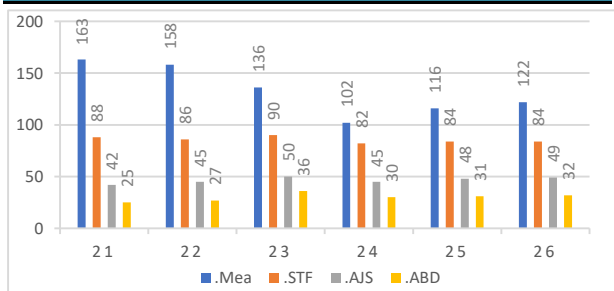
- A training session for the health workers of UOSSM organization who are working in Idleb and Aleppo countryside governorates, on 30th of June and 03rd of July, the topics were: diseases case definition, AFP, Measles and Rubella surveillance. The total number of the trainees was 22 health workers.
- During Epi Week 26, (442/457) 97% of the health facilities across 10 Governorates provided surveillance data for all EWARN Syndroms this week 90% of reporting sites submitted the weekly reports on time.
- The consultations reported this week were 190115 (including 40% children under the age of five) compared to 189435 consultations in previous week.
- 7 AFP (Acute Flaccid Paralysis) cases were reported 3 Aleppo - 2 Idleb - 1 Ar-raqqa - 1 Al-hasakeh
- EWARN recorded 9 deaths cases because of Measles complications from beginning 2018 up to this EPID week distributed as follows 5 in Deir ez Zor, 3 in Idleb and 1 in Aleppo countryside.**
- EWARN labs reported: 16 positive cases for Measles IgM (Al Bab 6, A'zaz 2, Jebel Saman 6, Harim 1 and Idleb 1), 3 positive cases for IgM hepatitis A (Al Bab), 10 positive cases for Mumps IgM (Al Bab 5, Membij 4, Dar'a 1).
- The number of AJS cases was 826, with the highest number of alerts Deir ez Zor district (9 alerts).
- The number of OAD cases doubled in: Aghtrin subdistrict which counts 312 cases.**
- The highest syndromes reported were respectively: OAD (19079), ILI (13635) and STF (1319).
- Al-Hasakeh governorate recorded the highest proportional morbidity for OAD (33.4%), ILI (25.5%), and AJS (1.7%).
- Deir ez Zor governorate recorded the highest proportional morbidity for STF (2.8%).
- Hama countryside and Ar-Raqqa recorded the highest proportional morbidity for Leish (1.7%).

Reporting Rate and Consultations

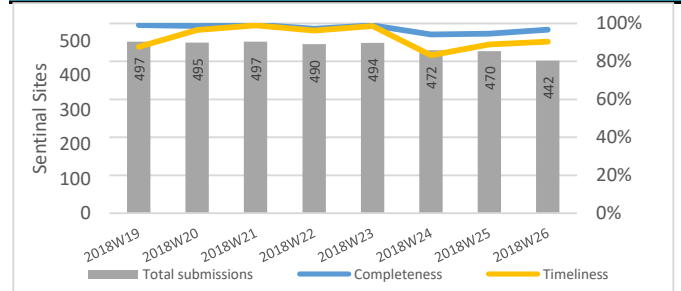


Governorate	Reporting Sites	No. Sentinal Sites	Completeness
Aleppo	102	104	98%
Al-Hasakeh	91	92	99%
Ar-Raqqa	69	72	96%
Deir-ez-Zor	50	51	98%
Hama	9	9	100%
Idleb	121	129	94%
Total	457	442	97%

Numbers of Top 4 Alerts

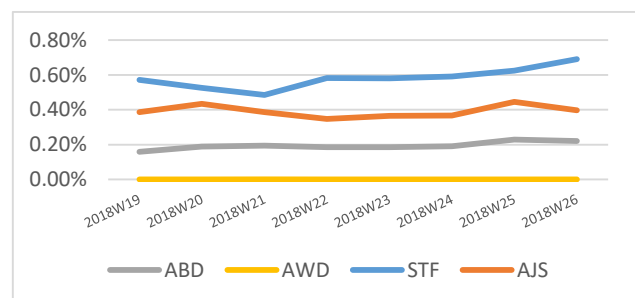
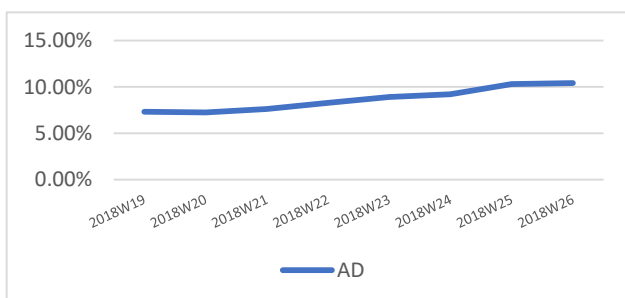


Reporting Rate and Timeliness



Water Borne Diseases details

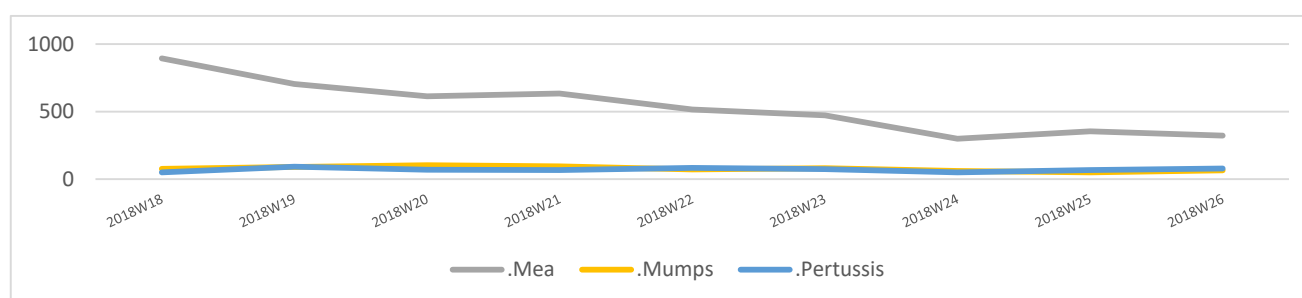
- The number of the reported STF cases was 1319, as well as 826 new cases of AJS were reported.
- EWARN reported 19079 OAD cases, the number of OAD cases doubled only in: Aghtrin subdistrict
- Water borne diseases risk scale is being generated and followed on community level and on monthly basis in all EWARN coverage areas.
- EWARN informed partners & WASH team about the districts with high WBD levels.



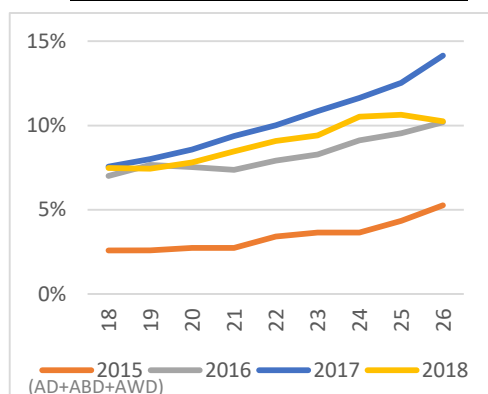
Vaccine Preventable Diseases details

In Epi-week 26 /2018, 321 cases of suspected measles were reported.

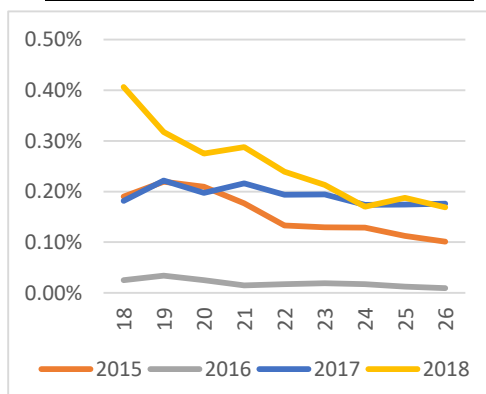
- 6 suspected measles cases were investigated in Epi week 26 : Aleppo rural 1, Al Hasakeh 3, Hama 1 and Idleb 1.
- EWARN labs reported 16 positive cases for Measles IgM out of 20 specimens: (Al Bab 6, A'zaz 2, Jebel Saman 6, Harim 1 and Idleb 1)
- In the Epi week 26/2018, 94 new cases of suspected measles were reported from Ar Raqqa governorate (Ar Raqqa district 69 ,Tell Abiad 6, Ath-Thawrah 19), in addition to 96 suspected cases from Deir ez zor governorate (Deir ez zor district 63 ,Mayadin 22, Abu Kamal 11).
- 79 new cases of suspected measles were reported from Idleb governorate (Harim 29, Idleb 25, Jisr-Ash-Shugur 12, Ariha 6, Al Ma'ra 7.
- While reporting in Aleppo has decreased toward 48 cases of suspected measles, distributed as follows: Al Bab 1, A'zaz 17, Jebel Saman 27 and Menbij 3.
- The reporting of new measles cases from different areas of Deir-ez- Zor ,Ar Raqqa , rural Aleppo and Idleb is still ongoing.
- It was recommended to: isolate the cases, personal hygiene, providing vitamin A and explain to parents about the importance of the vaccine.
- The number of the reported suspected Pertussis cases was 78, the highest number reported from Karama district in Ar-Raqqa and Al Ma'ra in Idleb (10 cases).
- The number of the reported suspected Mumps cases was 64, the highest number reported from A'zaz district (7 cases).



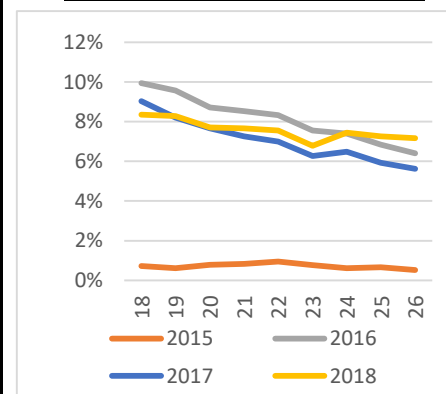
Prop. Morb. of Diarrheal Diseases



Prop. Morb. of Measles



Prop. Morb. of ILI



Case Numbers By Governorate and Age

Gov. & Age	OAD	ABD	AWD	STF	AJS	ILI	SARI	AFP	Mea	Men	UCE	UCD	Leish	Others	Total	
Aleppo	<5	2718	23	0	6	46	1832	15	1	24	7	1	0	60	14024	18757
	≥5	2070	14	0	138	77	1851	4	2	25	0	1	0	102	29555	33839
Idleb	<5	3068	8	0	44	71	2036	36	2	50	17	0	0	118	25632	31082
	≥5	2529	9	0	365	114	1905	29	0	29	1	0	0	317	50980	56278
Hama	<5	280	0	0	3	0	309	0	0	2	0	0	0	33	1601	2228
	≥5	294	0	0	7	3	330	0	0	0	0	0	0	73	3448	4155
Ar-raqqa	<5	894	16	0	22	50	353	37	1	59	3	1	0	98	3973	5507
	≥5	412	26	0	78	56	224	20	0	35	0	1	0	98	5201	6151
Deir-ez-Zor	<5	1223	124	0	102	128	652	45	0	72	28	0	0	123	6297	8794
	≥5	1226	59	0	429	60	806	17	0	24	5	0	0	123	7488	10237
Al-Hasakeh	<5	2580	85	0	67	105	1870	77	1	1	25	0	0	38	2706	7555
	≥5	1785	54	0	58	116	1467	58	0	0	26	0	0	43	1925	5532
Total	19079	418	0	1319	826	13635	338	7	321	112	4	0	1226	152830	190115	

Alerts' Numbers by District

Governorate	District	Sub-district	ABD	AJS	Leish	Mea	OAD	SARI	STF
Al-Hasakeh	Al Malika	Al Malika				1			
Al-Hasakeh	Al Malika	Jawadiyah							1
Al-Hasakeh	Al Malika	Ya'robiyah						1	
Al-Hasakeh	Qamishli	Amuda	1						
Al-Hasakeh	Ras Al Ain	Ras Al Ain	1	1					
Aleppo	A'zaz	A'zaz		1					1
Aleppo	A'zaz	Aghtrin		1		1	1		
Aleppo	Ain Al Arab	Sarin							1
Aleppo	Jebel Saman	Atareb			1				
Aleppo	Jebel Saman	Daret Azza		1					
Aleppo	Jebel Saman	Jebel Saman				1			
Ar-Raqqqa	Al-Thwarah	Mansura		1		1		1	
Ar-Raqqqa	Ar-Raqqqa	Ar-Raqqqa			1				
Deir-ez-Zor	Deir-ez-Zor	Deir-ez-Zor			1				
Deir-ez-Zor	Deir-ez-Zor	Kisreh			1				
Hama	As Suqaylabiyah	Madiq Castle			1	1			1
Hama	Hama	Hamra				1			
Idleb	Al Ma'ra	Kafr Nobol		1				1	
Idleb	Al Ma'ra	Ma'arrat An Nu'man			1				
Idleb	Ariha	Ariha				1			
Idleb	Harim	Armanaz							1
Idleb	Harim	Dana			1				1
Idleb	Harim	Kafr Takharim		1					
Idleb	Harim	Qourqeena		1					
Idleb	Idleb	Abul Thohur				1			
Idleb	Idleb	Bennsh		1					
Idleb	Idleb	Maaret Tamsrin							1
Idleb	Idleb	Saraqab			1				
Idleb	Jisr-Ash-Shugur	Jisr-Ash-Shugur		1		1			

Ps: The colored cells represent the highest alerts for each surveyed syndrome on district level

Lab Activities Epi Week 26

Syndrome	Pattern analysis	No. of Sampels	No. of positive samples	Positive sample distribution (District)
Measles	Measles IgM	20	16	6 Al'Bab, 2 Azaz, 6 Jabal'Saman, 1 Harem, 1 Edlib
Rubella	Rubella IgM	4	All suspected samples for Rubella IgM were negative	
Acute Jaundice Syndrome	HAV IgM	4	3	3 Idleb
Mumps	Mumps IgM	14	10	5 Al'Bab , 4 Menbij, 1 Dara

Abbreviations

ABD	Acute Bloody Diarrhea	Mea	suspected Measles
OAD	Other Acute Diarrhea	Men	suspected Meningitis
AFP	Acute Flaccid Paralysis	Prop.Morb.	Proportional Morbidity
AJS	Acute Jaundice Syndrome	SARI	Severe Acute Respiratory Illness
AWD	Acute Watery Diarrhea	UCE	Unexplained Cluster Of Health Events
ILI	Influenza-like Illness	UCD	Unexplained Death
WASH	Water Sanitation Hygine	WBD	Water Borne Diseases
VPD	Vaccine Preventable Diseases	ARI	Acute Respiratory Illness