

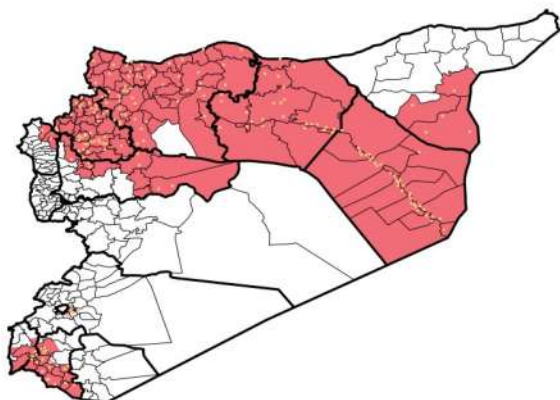
Highlights

- FLOs training about EWARN and AFP updates was held by DLOs in many governorates: Afrin , Al Bab , Jebel Saman , Membij , Ar Raqqa ,Tal Abyad - AthThawra , Deir ez zor , Abu Kamal, AsSalameiyeh , As Suqaylabiyah ,Muhrada ,Idleb , Ariha , Al Ma`ra , Jisr AsShugur , Harim , Daraa , Quneitra and Rural Damascus.
- During Epi-week no 20 2015; 91% (428/391) of the health facilities across 10 Governorates provided surveillance data, 86% of reporting sites submitted the weekly reports on time.
- The total number of consultations reported during the reporting week was 125087 (including 40% children under the age of five) compared to 119642 consultations during week 19, 2015.
- The leading cause of morbidity was STF (Suspected Typhoid Fever), with over 1643 cases, the highest alerts were reported in Harim (14).
- In Epi week 20, 6 AFP (Acute Flaccid Paralysis) cases were reported in : Jebel Saman 3 – Ariha 1 – Al Ma`ra 1 and Harim 1 . Investigation for 103 AFP cases were conducted since the beginning of 2015 up to date. See weekly Acute Flaccid Paralysis Surveillance report for more details.
- 66 measles cases reported in this week, the highest alerts were reported in Ar Raqqa (15).

- Lab investigation for 5 Measles suspected cases: 3 in Azaz (one was positive Measles IgM), 1 in Hama and 1 in Idleb. Most cases are enrolled in a line list.
- 384 cases of SARI reported in Epi Week 20, the highest alerts were reported in Afrin (7).
- In Epi week 20: 4427 cases of Acute Diarrhea and 5465 cases of Influenza Like Illness were reported.
- Common disease reported under others were acute bronchiolitis (242 cases) , chicken pox (110 cases), Brucellosis (118 cases),Pertussis (48 cases), Scabies, Lice , Cutaneous leishmaniasis, mumps (9 new cases in Jebel Saman , Harim and Dar`a) , and Hand, foot and mouth diseases. Seven new T.B cases (3 of them are Tuberculous meningitis) were reported in : Al Mayadin , Rural Damascus and Afrin .
- 33 new cases of Hand, foot and mouth disease were reported in Daraa (Jizeh, Kherbet Gazala and Hrak).
- New case of visceral leishmaniasis (Kala Azar) – male 3 years old – was detected by RT in Harim .
- 1361 new Cutaneous leishmaniasis cases reported this week, the alerts reported in 4 districts: Jebel Saman 2 – Harim 2 – AsSalameiyeh 1 and As Suqaylabiyah 1 .

EWARN Coverage

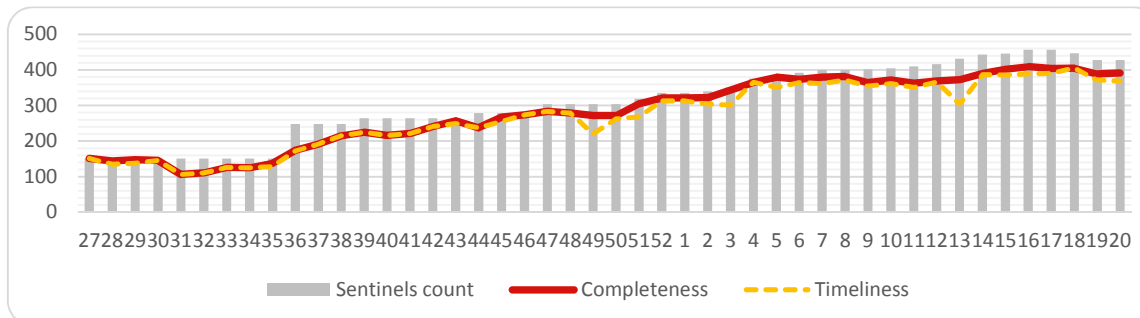
ACU covers 111 sub districts in 10 governorates



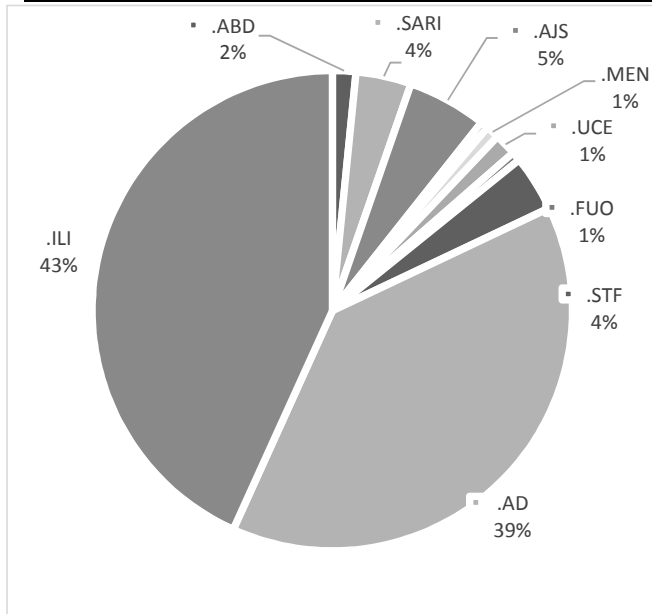
Number of Sentinel Sites and Total Number of Consultations

Governorate	# of sentinel sites	Reporting	Sentinels	# of consultations
Al- Hasakeh	28	28	100.0%	2997
Aleppo	132	129	97.7%	34676
Ar-Raqqa	69	64	92.8%	11444
Damascus	2	2	100.0%	948
Dar`a	22	19	86.4%	10954
Deir-ez-Zor	61	47	77.0%	15072
Hama	14	14	100.0%	8064
Idleb	80	70	87.5%	33569
Lattakia	3	3	100.0%	1534
Quneitra	5	4	80.0%	847
Rural Damascus	12	11	91.7%	4982
Grand total	428	391	91.4%	125087

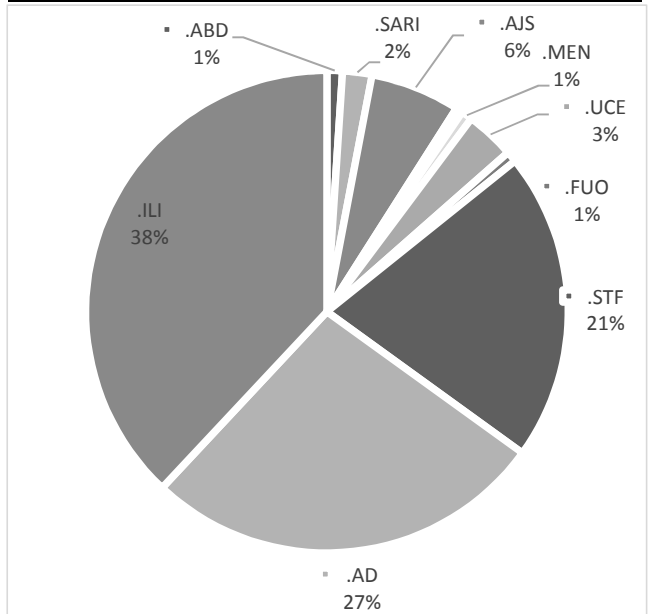
Completeness and Timeliness



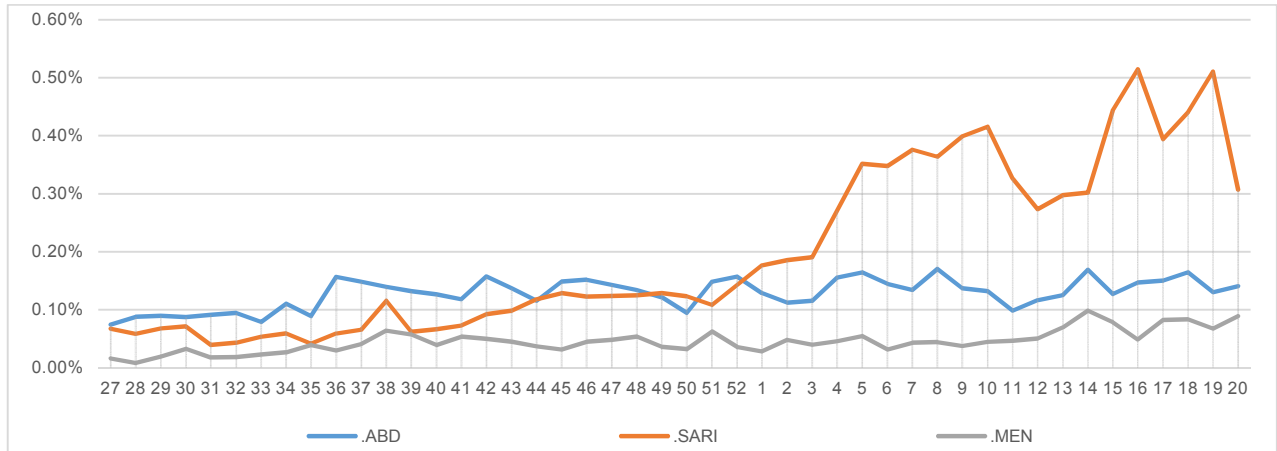
Percentage of EWARN Syndromes < 5Y



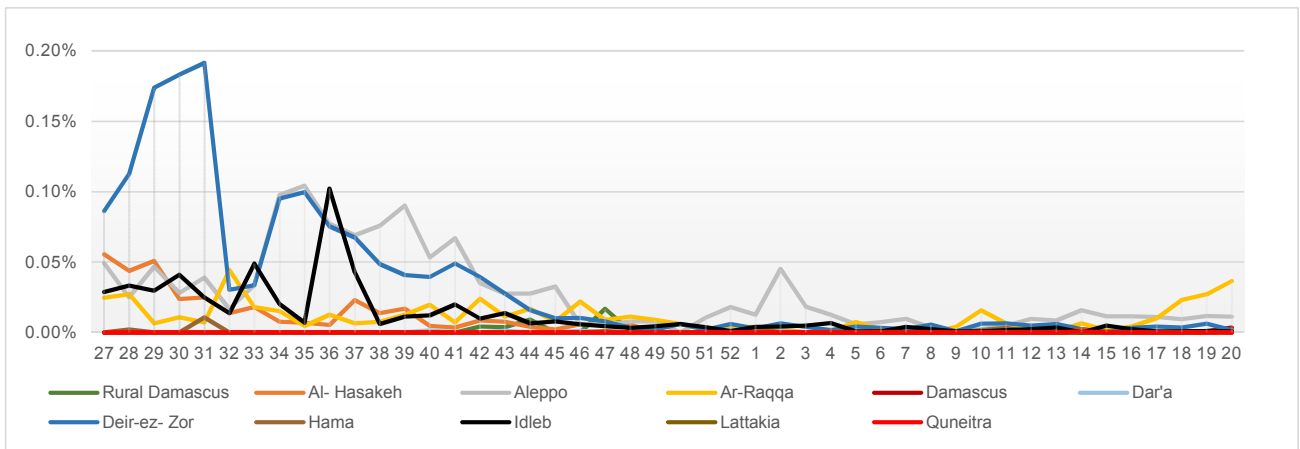
Percentage of EWARN Syndromes > 5Y



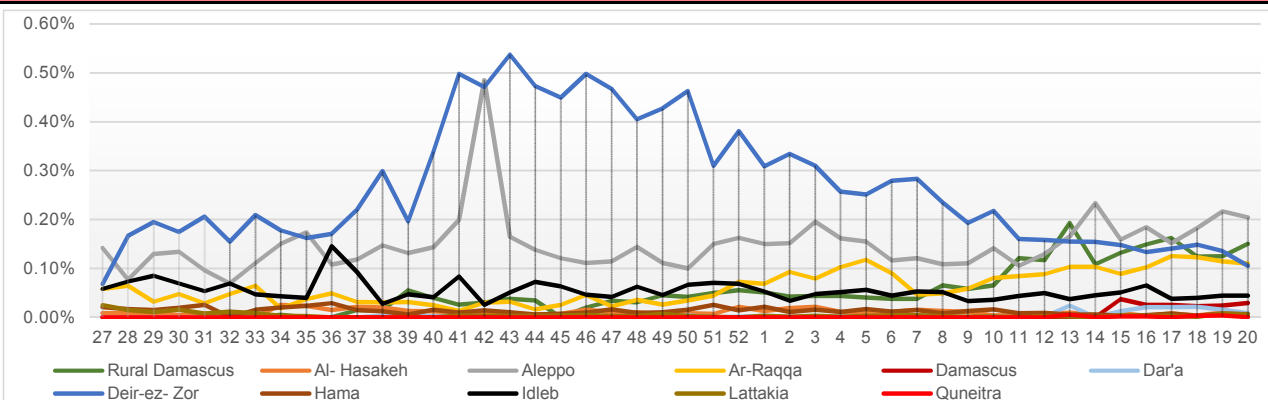
Trends for essential priority diseases in 9 governorates – Epi week 27-2014 to Epi week 20 - 2015



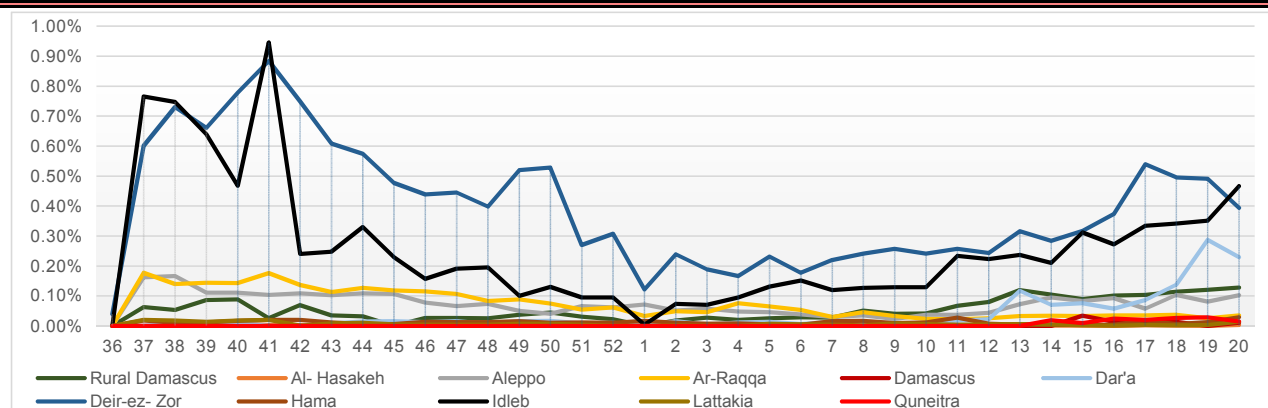
Proportional Morbidity of suspected Measles by Governorate, Epi Week 20 - 2015



Proportional Morbidity of suspected AJS by Governorate, Epi Week 20 - 2015



Proportional Morbidity of suspected STF by Governorate, Epi Week 20 - 2015



Number of cases that EWARN observes by age & geographical area for Epi week 20 - 2015

Governorate	Age Group	ABD	AWD	AJS	SARI	AFP	MEA	MEN	UCE	UXD	FUO	AD	ILI	LEISH	STF	OTHER	TOTAL
Al-Hasakeh	< 5	2	0	3	3	0	0	0	0	0	0	118	5	0	0	994	2997
	> 5	4	0	0	4	0	0	0	0	0	0	37	1	0	4	1822	
Aleppo	< 5	32	0	144	117	3	8	32	24	2	33	749	703	131	28	12214	34676
	> 5	31	0	91	90	0	5	35	46	0	24	526	572	383	90	18563	
Ar-Raqqa	< 5	17	0	76	9	0	18	8	2	0	0	232	104	8	15	4336	11444
	> 5	7	0	50	2	0	24	13	7	0	4	184	95	69	25	6139	
Damascus	< 5	0	0	3	0	0	3	0	0	0	0	0	0	0	1	416	948
	> 5	0	0	30	0	0	1	0	2	0	0	0	0	0	11	481	
Dar'a	< 5	0	0	4	2	0	1	0	54	0	0	55	42	0	63	4508	10954
	> 5	0	0	5	0	0	0	0	96	0	1	59	41	0	201	5822	
Deir-ez-Zor	< 5	41	0	84	89	0	2	14	4	0	5	790	1041	21	79	6707	15069
	> 5	21	0	37	9	0	0	1	4	0	8	329	607	42	375	4759	
Hama	< 5	6	0	1	3	0	1	1	0	0	1	130	331	88	0	1583	8064
	> 5	5	0	6	4	0	0	0	0	0	1	137	371	252	33	5110	
Idleb	< 5	8	0	19	27	3	1	5	10	0	2	531	682	80	50	9076	33571
	> 5	2	0	32	20	0	0	1	50	0	10	535	860	285	487	20795	
Lattakia	< 5	0	0	0	0	0	0	0	0	0	0	1	0	0	2	280	1534
	> 5	0	0	6	0	0	0	0	0	0	0	2	0	2	14	1227	
Quneitra	< 5	0	0	0	1	0	0	1	0	0	0	7	4	0	7	385	847
	> 5	0	0	0	2	0	0	0	3	0	0	3	6	0	10	418	
Rural Damascus	< 5	0	0	26	1	0	1	0	6	0	1	1	0	0	9	1257	4982
	> 5	0	0	147	1	0	0	0	14	0	1	1	0	0	139	3377	
TOTAL	< 5	106	0	360	252	6	35	61	100	2	42	2614	2912	328	254	41756	125086
	> 5	70	0	404	132	0	30	50	222	0	49	1813	2553	1033	1389	68513	
Grand total		176	0	764	384	6	65	111	322	2	91	4427	5465	1361	1643	110269	

Disease	Alert threshold	#HF reach threshold	# Cases	The most affected Communities-Districts
AFP	1	6	6	Jebel Saman 3 - Ariha 1 - Al Ma`ra 1 - Harim 1
MEA	1	30	66	Ar Raqqa 15 - Menbij 5 - Damascus 2 - Azaz 1 - Mayadin 1 - Al Ma`ra 1 - Dar`a 1 - Al Bab 1 - Duma 1 - Abu Kamal 1 - As Suqaylabiyah 1
AJS	5	52	764	Ar Raqqa 9 -Rural Damascus7- Afrin 6- Menbij 6 -Mayadin 4-Jebel Saman 3-Bab 3 -Duma 3- Azaz 2-Damascus 2- Idleb 2-Harim1-Deir ez zor1- Jisr AshShugur1-As Suqaylabiyah 1-Abu Kamal 1
STF	5	76	1643	Harim14- Al Mayadin 9 -Deir ez zor 9- Abu Kamal 8-Rural damascus 7- Jebel Saman 6 -Dar`a 3- Izra` 3 - Al Ma`ra 3- Quneitra 2- Damascus 2- Duma 2- Azaz 2- Idleb 2- AsSanamayn1- AsSalamyieh1 -Bab 1 - Lattakia 1
ABD	5	9	176	Al Mayadin 3 - Jebel Saman 2 - Abu Kamal 2 - Deir ez zor 1 - As Suqaylabiyah 1
SARI	5	20	384	Afrin 7 - Abu Kamal 5 - Harim 2 - Al Mayadin 2 - Jebel Saman 2 - Idleb 1 - Al Ma`ra 1
MEN	5	4	111	Menbij 2 - Afrin 1 - Jarablus 1
(LEISH) UCE	50	6	1361	Jebel Saman 2 - Harim 2 - As Suqaylabiyah 1 - AsSalamyieh 1

Response Activities

- Preparations for fifth Expert Review committee on 18th of May.

- FLOs training about EWARN and AFP updates was held by DLOs in many governorates: Azaz , Afrin , Al Bab , Jebel Saman , Menbij , Ar Raqqa ,Tal Abyad - AthThawra , Deir ez zor , Abu Kamal, AsSalameiyeh , As Suqaylabiyah ,Muhrada ,Idleb , Ariha , Al Ma`ra , Jisr AsShugur , Harim, Al Hafa, Daraa , Quneitra and Rural Damascus.
- Series of meetings with several NGOs (MRFS, SAMS, SEMA, UOSSM, MSF,BIHAR, Syria Charity ,FMA) were held to improve the cooperation between the partners and improve relations with the sentinel sites which supported by them in Syria.

ABD=Acute Bloody Diarrhea

AWD=Acute Watery Diarrhea

AFP=Acute Flaccid Paralysis

AJS=Acute Jaundice Syndrome

SARI= Severe Acute Respiratory Illness

UXD=Unexplained Death

FUO=Fever Of Unknown Origin

MEA=suspected Measles

MEN= suspected Meningitis

UCE=Unexplained Cluster Of Health Events

AD=Acute Diarrhea

ILI= Influenza-like Illness