

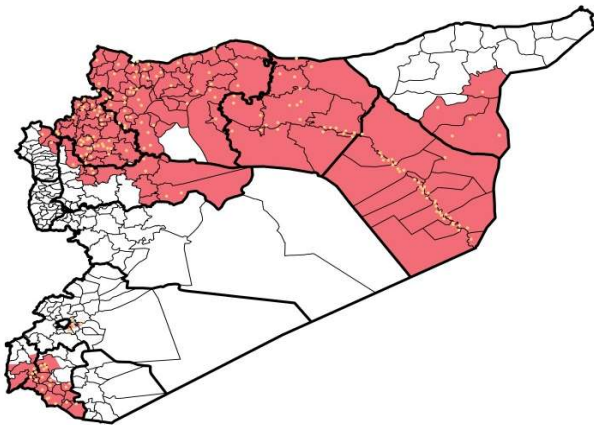
Highlights

- 5th ERC was held on 18th May to classify nine AFP cases, 6 cases from 2014 and 3 cases from 2015.
- 3 of them were lost to 60 days-follow up, and 3 of them died before 60 days follow-up. Other 3 were with inadequate samples and residual paralysis on the 60 days follow-up.
- ERC Classification results : 1 Compatible case in Ar Raqqa (belong to 2014 cases) - other 8 cases were classified as Discarded.
- MRFS provided Cholera RT for DLOs in : Aleppo, Idleb and Hama.
- During Epi-week no 21 2015; 92% (423/390) of the health facilities across 10 Governorates provided surveillance data, 90% of reporting sites submitted the weekly reports on time.
- The total number of consultations reported during the reporting week was 125412 (including 40% children under the age of five) compared to 125087 consultations during week 20, 2015.
- The leading cause of morbidity was STF (Suspected Typhoid Fever), with over 1756 cases, the highest alerts were reported in Harim (13).
- In Epi week 21, 10 AFP (Acute Flaccid Paralysis) cases were reported in Jebel Saman 3 – Hasakeh 1 – Dar`a 1 – Deir ez zor 1 – Mar`a 1 – Abu Kamal 1 – AthThwara 1 and As Suqaylabiyah 1 .

- Investigation for 113 AFP cases were conducted since the beginning of 2015 up to date. See weekly Acute Flaccid Paralysis Surveillance report for more details.
- 61 measles cases reported in this week, the highest alerts were reported in Ar Raqqa (15). Lab investigation for 8 suspected cases in Azaz, seven were positive Measles IgM. Most cases are enrolled in a line list.
- 477 cases of SARI reported in Epi Week 21, the highest alerts were reported in Afrin (10).
- In Epi week 21: 4472 cases of Acute Diarrhea and 5222 cases of Influenza Like Illness were reported.
- Common disease reported under others were acute bronchiolitis (270 cases), chicken pox (89 cases), Brucellosis (79 cases), Pertussis (30 cases), Scabies, Lice, Cutaneous leishmaniasis, mumps (2 new cases in Jebel Saman and Dar`a), and Hand, foot and mouth diseases. Five new T.B cases were reported in : Al Mayadin and Rural Damascus.
- 38 new cases of Hand, foot and mouth disease were reported in Daraa (Jizeh, Kherbet Gazala and Hrak).
- 1471 new Cutaneous leishmaniasis cases reported this week, the alerts reported in 5 districts: Jebel Saman 2 – Harim 1 – Al Mar`a 1 and As Suqaylabiyah 1 .

EWARN Coverage

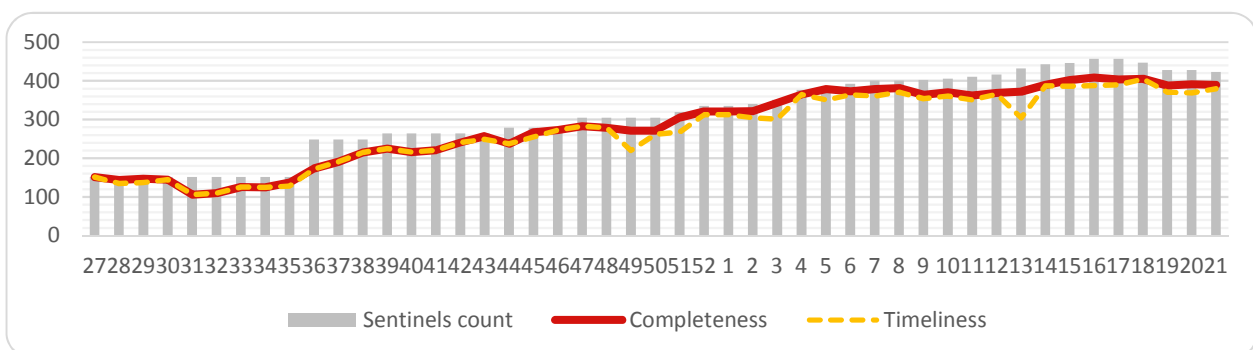
ACU covers 111 sub districts in 10 governorates



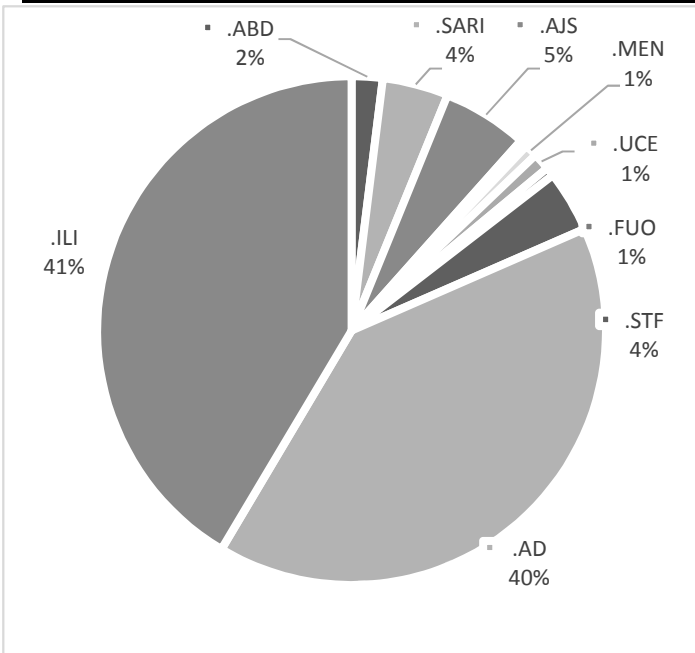
Number of Sentinel Sites and Total Number of Consultations

Governorate	# of sentinel sites	Reporting Sentinels	% of reporting	# of consultations
Al- Hasakeh	28	28	100.0%	3131
Aleppo	135	129	95.6%	34966
Ar-Raqqa	61	56	91.8%	11259
Damascus	2	2	100.0%	907
Dar`a	22	18	81.8%	11186
Deir-ez-Zor	61	53	86.9%	15579
Hama	14	13	92.9%	6168
Idleb	80	72	90.0%	34487
Lattakia	3	3	100.0%	1328
Quneitra	5	5	100.0%	1225
Rural Damascus	12	11	91.7%	5176
Grand total	423	390	92.2%	125412

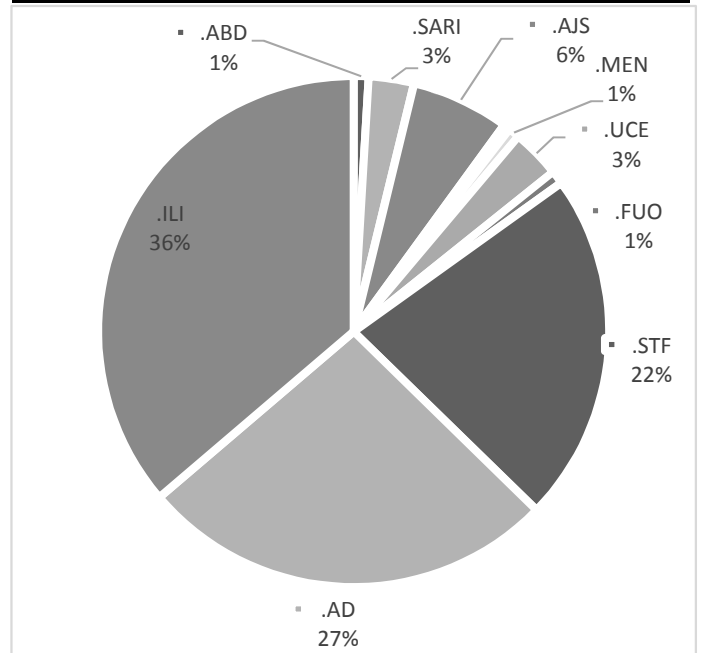
Completeness and Timeliness



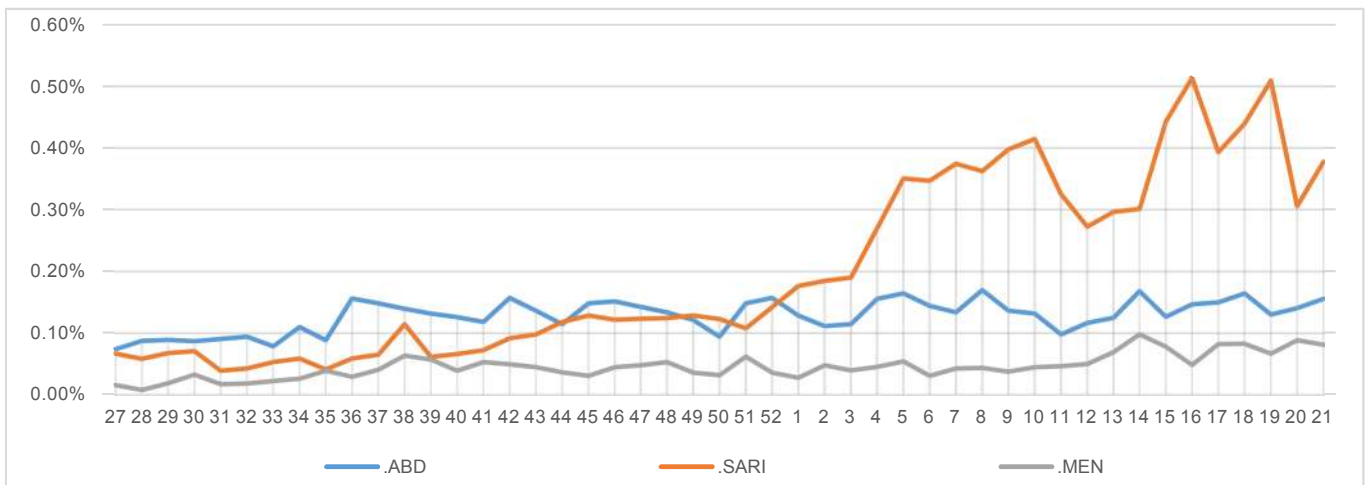
Percentage of EWARN Syndromes < 5Y



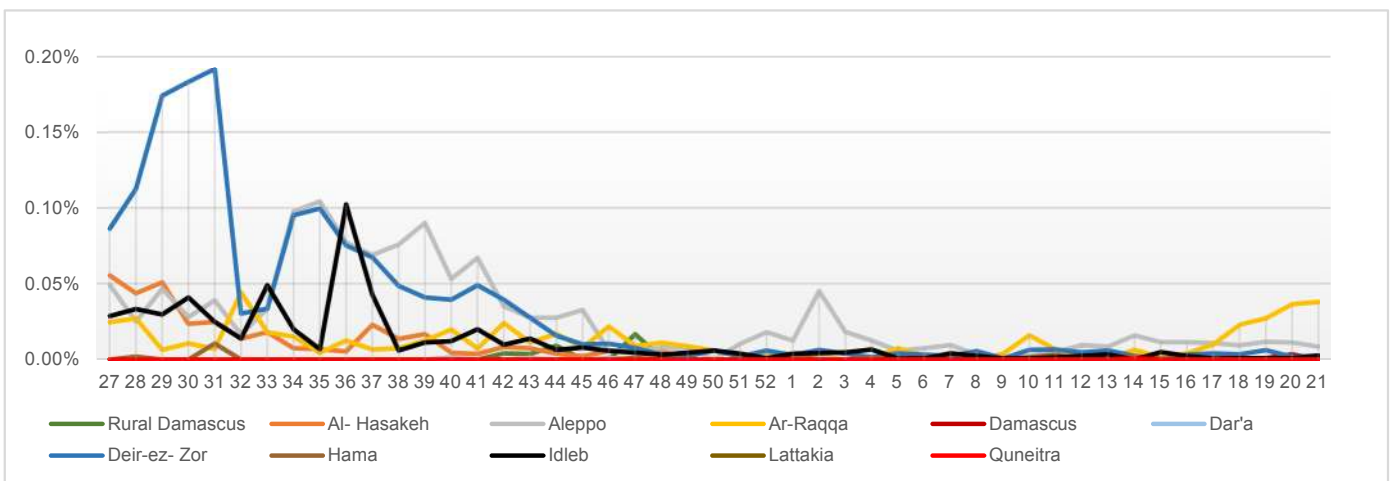
Percentage of EWARN Syndromes > 5Y



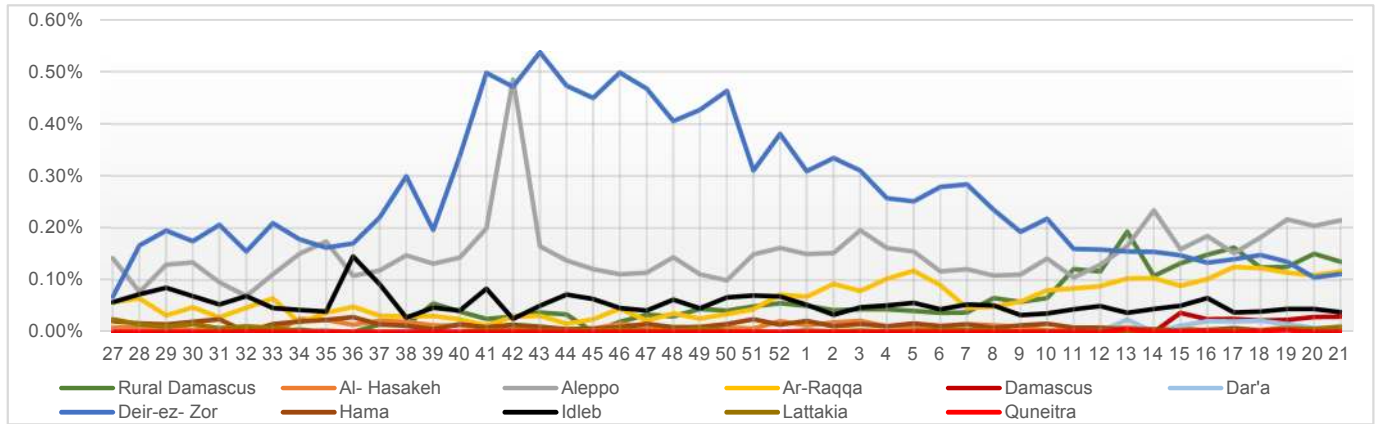
Trends for essential priority diseases in 9 governorates – Epi week 27-2014 to Epi week 21 - 2015



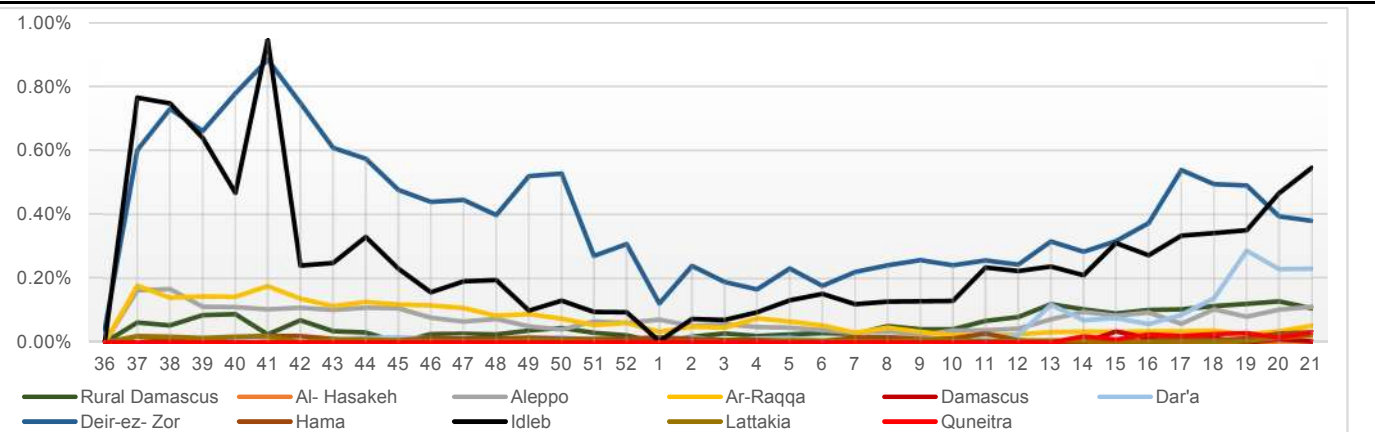
Proportional Morbidity of suspected Measles by Governorate, Epi Week 21 - 2015



Proportional Morbidity of suspected AJS by Governorate, Epi Week 21 - 2015



Proportional Morbidity of suspected STF by Governorate, Epi Week 21 - 2015



Number of cases that EWARN observes by age & geographical area for Epi week 21 - 2015

Governorate	ABD	AWD	AJS	SARI	AFP	MEA	MEN	UCE	UXD	FUO	AD	ILI	LEISH	STF	OTHER	TOTAL	
Al-Hasakeh	< 5	7	0	3	3	0	0	0	1	0	143	0	2	0	1085	3131	
	> 5	8	0	6	9	1	0	0	0	1	61	0	0	3	1798		
Aleppo	< 5	31	0	160	161	2	8	29	13	1	25	724	719	150	31	12746	34966
	> 5	19	0	88	152	1	2	26	34	1	22	413	425	374	98	18511	
Ar-Raqqa	< 5	17	0	75	6	1	19	5	2	0	234	95	14	15	4281	11259	
	> 5	9	0	60	2	0	25	14	8	4	3	202	85	72	46		5965
Damascus	< 5	0	0	0	0	0	0	0	0	0	8	0	1	0	396	907	
	> 5	0	0	34	3	0	0	0	0	0	0	0	0	3	462		
Dar'a	< 5	0	0	2	9	1	1	1	41	0	130	28	0	58	4827	11186	
	> 5	2	0	9	2	0	0	0	102	0	89	46	2	209	5621		
Deir-ez-Zor	< 5	67	0	86	65	1	2	10	0	0	775	932	17	78	7223	15579	
	> 5	18	0	43	16	1	1	7	0	1	295	516	54	362	4988		
Hama	< 5	4	0	2	5	1	0	2	0	0	78	202	55	2	1371	6168	
	> 5	0	0	3	2	0	0	0	0	2	137	334	140	35	3792		
Idleb	< 5	5	0	15	30	0	2	7	15	0	587	800	142	54	8952	34487	
	> 5	6	1	29	3	1	1	0	44	0	579	1023	445	578	21164		
Lattakia	< 5	0	0	0	0	0	0	0	0	0	0	0	0	0	249	1328	
	> 5	0	0	12	0	0	0	0	0	0	0	0	2	25	1040		
Quneitra	< 5	0	0	0	0	0	0	0	0	0	2	5	0	13	555	1225	
	> 5	0	0	0	2	0	0	0	8	0	3	7	0	23	607		
Rural Damascus	< 5	1	0	22	2	0	0	0	2	0	5	10	0	10	1483	5176	
	> 5	1	0	134	2	0	0	1	13	0	2	5	0	113	3363		
TOTAL	< 5	132	0	365	281	6	32	54	73	2	2691	2781	382	261	43168	125412	
	> 5	63	1	418	193	4	29	48	209	6	1781	2441	1089	1495	67311		
Grand total		195	1	783	474	10	61	102	282	8	4472	5222	1471	1756	110479		

Disease	Alert threshold	#HF reach threshold	# Cases	The most affected Communities-Districts
AFP	1	6	6	Jebel Saman 3 – Hasakeh 1 – Deir ez zor 1 - Al Ma`ra 1 - Dar`a 1 - AthThwara 1 - Abu Kamal 1 - As Suqaylabiyah 1
MEA	1	30	61	Ar Raqqa 15 - Membij 4 - Abu Kamal 2 - Al Mar`a 2 - Azaz 1 -Dar`a 1 - Jebel Saman 1 - Deir ez zor 1 - Harim 1 - AthThwara 1 - Jarablus 1
AJS	5	52	783	Ar Raqqa 12 -Rural Damascus 7- Afrin 6 - Membij 5 - Al Mayadin 4 - Jebel Saman 4 -Duma 3 - Damascus 2 - AL Mar`a 2 -Harim 1 - Jisr AshShugur 1 - Abu Kamal 1- Jarablus 1 - Azaz 1 - Abu Kamal 1 - Al Hafa 1
STF	5	80	1756	Harim 13- Al Mayadin 10 - Abu Kamal 10- Deir ez zor 8 - Jebel Saman 8 -Rural Damascus 6- Izra` 4 - Idleb 4 - Quneitra 3- Duma 2 - AsSanamayn 2- Dar`a 2- AsSalamyieh 2 -Al Mar`a 2- Hafa 1 -Lattakia 1 - Ar Raqqa 1 - Jisr AshShugur 1
ABD	5	5	195	Al Mayadin 2 - Abu Kamal 2 - Jebel Saman 1
SARI	5	19	477	Afrin 10 - Al Mayadin 3 - Abu Kamal 2 - Harim 1 - Al Ma`ra 1 - Azaz 1 - Izra` 1
MEN	5	3	102	Membij 1 - Afrin 1 - Jebel Saman 1
(LEISH) UCE	50	5	1471	Jebel Saman 2 - Harim 1 - As Suqaylabiyah 1 - Al Mar`a 1

Response Activities

- MRFS provided Cholera RT for DLOs in : Aleppo, Idleb and Hama.
- 5th ERC was held on 18th May to classify nine AFP cases , and the results were : 1 Compatible case in Ar Raqqa (belong to 2014 cases) - other 8 cases were classified as Discarded .
- Series of meetings with several NGOs (MRFS, SAMS, SEMA, UOSSM, MSF, BIHAR, Syria Charity ,FMA , Relief International) were held to improve the cooperation between the partners and improve relations with the sentinel sites which supported by them in Syria.

ABD=Acute Bloody Diarrhea

AWD=Acute Watery Diarrhea

AFP=Acute Flaccid Paralysis

AJS=Acute Jaundice Syndrome

SARI= Severe Acute Respiratory Illness

UXD=Unexplained Death

FUO=Fever Of Unknown Origin

MEA=suspected Measles

MEN= suspected Meningitis

UCE=Unexplained Cluster Of Health Events

AD=Acute Diarrhea

ILI= Influenza-like Illness